

# Eastington Community News

February / March 2012

Nº. 131

Happy New Year and welcome to our first issue for 2012. Thank you everyone who filled in and returned their Parish Plan Questionnaire. Your answers will be really important in getting local views and needs across in face of Stroud District Council's plans to make rural Eastington into an URBAN AREA. All parts of this Parish are at high risk of that.

**A PUBLIC MEETING HAS BEEN CALLED FOR TUESDAY 31<sup>ST</sup> JANUARY 2012**

**IN THE PARISH CHURCH AT 7:00 P.M.**

**TO DEBATE THE FUTURE PLANNING NEEDS OF THIS PARISH.**

In view of limited parking please walk if you can

The wishes of the people of Eastington are very clear from the Parish Plan; no large-scale development and special sites to be protected. Neil Carmichael is actively supporting the fight against massive development. David Drew will attend, plus other County Councillors.

Stroud District Cabinet Leaders, Frances Roden and Barbra Tait (Conservatives) who are strong supporters of URBANISING Eastington are invited to hear our views. Denis Andrewartha and senior Lib-Dems are also invited to explain why they sided with the plan to increase the burden on Eastington in order to lighten their own load in Cam.

The 'Don't Strangle Stroud' group has been highly active in bringing the impact of Stroud's 'Core Strategy' of URBANISING Eastington to the attention of the entire District and you will find one of their pamphlets inside. 'Don't Strangle Stroud' and Keep Eastington Rural will both be present at the above meeting. We anticipate a lively debate!

In addition to the Parish Plan, it is also important to document how the Parish habitat has changed over the past 30 years. Please make a note of the Wildlife Habitat Survey (details inside,) Saturday 14<sup>th</sup> April 2012.

We need to hear from you by 9<sup>th</sup> February latest if you are interested to celebrate the Queen's Diamond Jubilee (see within). Community Orchards & Allotments groups, Eastington Youth Group and results from Alkerton Rangers can also be read within.

After coming to this Village, Kelvin Walsh soon became a fount of local knowledge, with the aptly named news agency, 'Eastington News' at the hub. He always had an interesting story to tell, and he was instrumental in the birth of this 'Community News' that was so necessary to spread the word. Kelvin's energy and enthusiasm seemed never to be sapped - even though he had been up before the crack of dawn and had already worked long into the day. He always managed to get the ECN issue out, despite the old printer playing up, and he kept the finances balanced and income from adverts coming in. I deeply appreciated his friendship and work for the Village and he will be sadly missed.

**\* IF WE MISSED COLLECTING YOUR PARISH PLAN QUESTIONNAIRE PLEASE HAND TO LIZ AT THE POST OFFICE COUNTER BY 15TH FEBRUARY.**

Andrew Niblett (Editor) 824841 ([niblett.parish@talktalk.net](mailto:niblett.parish@talktalk.net))

Val Taylor (Articles Editor) ([valtaylor@cressgreen.myzen.co.uk](mailto:valtaylor@cressgreen.myzen.co.uk))

Tom Low (Distributor & Adverts) 823425 ([tom@hazelcottage.eu](mailto:tom@hazelcottage.eu))

**Next Deadline: All articles by Friday 23<sup>rd</sup> March please!**

**Next Delivery: by 7<sup>th</sup> April 2012 please!**

View the "Community News" at: [www.stroud.gov.uk/eastington](http://www.stroud.gov.uk/eastington)

No article of part thereof may be reproduced or published without prior permission of the Editor and author.  
The views expressed in ECN are not necessarily those of the editors.

Parish Council Meetings begin 19:00 @ Methodist Hall on 2nd Tuesday of every month.

Introduction – Andrew Niblett (Chairman)

Parish Plan Questionnaires had as high as 90+% return in some areas, but we know that in other areas there were problems and some confusion resulting in some missed forms. Sorry for that; even professional organisations get things wrong occasionally, and although our volunteers did their best, it was not easy to collect from houses as it was in the past. So, if you still have your questionnaire and are prepared to return it to the Post Office Counter by 15<sup>th</sup> February, we will include your results.

Core Strategy: (Stroud District Council's new Local Plan). There will be "public consultation" on the next stage from Monday 6<sup>th</sup> February to Monday 19<sup>th</sup> March. An extension to this important process is being sought. SDC has already thrown out other options allowing wider dispersion amongst the parishes and towns of the District, (voted along political lines by Stroud District Council on 24<sup>th</sup> November 2011). SDC will probably try to limit your comments to just their 'Preferred Strategy' instead of yours. Their 'Preferred Strategy' proposals are to distribute 4,000 new homes in certain locations; including Eastington parish. The consultation document will be online at <http://www.stroud.gov.uk/consultation>

We may be quick to forget the tragic and painful incidents of the recent past, when houses were flooded and serious injury occurred by blocked ditches and verges. There are scores of ditches currently in poor condition, and even in the few places where people have spent hours tending and clearing ditches, the haste to drive over verges by drivers of just some vehicles, (cars, delivery lorries and tractors,) causes the ditches to collapse in just seconds. Inconsiderate parking is often the reason given for driving over verges opposite. I recently witnessed a large 4x4 parked right up on a mounded verge to avoid the short walk to the property being visited; no larger vehicles could have passed it without crushing the verge opposite as well and this was in a region where flooding of houses has regularly occurred.

Even the grass triangle at Churchend - tended by the Parish at your cost - is driven over and rutted by drivers of 4x4s. It would be tiresome to resort to local By-laws for controlling verges and ditches for the actions of just a minority. Better by far to appear to common-sense community spirit to treat verges and ditches with respect - and for accidental damage to be repaired as soon as possible, please.

If the Police are to help make our Parish safer, then we all need to pass information to them to help them do their job. If you have concerns about protecting your identity, you can use the crime-stoppers on **0800 555111** in complete confidence. Alternatively you can dial the new non-emergency Police number, **101**.

Cllr Muriel Bullock

I don't know where the last year has gone to but I feel a lot has been achieved by the group of parents and helpers who make up Eastington Youth Group (EYG) and I congratulate them on their efforts.

The antisocial behaviour we have been experiencing in the area around Victoria Drive/Broadfield Road seems to have lessened since the end of November, I hope this will continue.

If anyone is still experiencing any problems please let me and the police know.

I am also concerned at the number of people parking in the Disabled bay outside the CO-OP and not displaying a blue badge, please can I ask all users to display their badges at all times even if they only intend to be in the shop for a short time, this will avoid them being reported for illegal parking.

# The Queen's Diamond Jubilee Beacons - 4th June 2012

**Rt Hon Jeremy Hunt MP writes:**

"In 2012, Her Majesty The Queen will become the second Monarch in British history to celebrate sixty years on the throne; the previous Monarch to achieve this was Queen Victoria. The Queen has reigned through some of the most profound and breathtaking changes ever to have taken place in our history. So it is absolutely right that The Queen's achievements - her hard work and dedication across this extraordinary time - be celebrated by all of us, both in this country and across the wider Commonwealth.

Individuals and communities will, of course, mark the Diamond Jubilee in any number of different ways. The Government, however, is working closely with Buckingham Palace to ensure that there are truly 'national' celebrations taking place of which we can all be proud.

As part of these celebrations, a series of beacons will be lit across the UK to celebrate this Jubilee. In 2002, over 1,800 beacons were lit to mark The Queen's Golden Jubilee. Communities across the UK and around the globe, including as far flung as Antarctica came together to light a beacon and celebrate this very special occasion. In 2012, the plan is to have even more with 2,012 being lit, and Her Majesty lighting the National Beacon on Monday 4th June."

***Well, we can't let this go by unmarked in Eastington!***

*This has thrown down the gauntlet but we have no traditional place for a beacon. If you have a suggestion for a good location for an Eastington beacon, please let me know!*

*A street party in the centre of the village has been suggested, closing off the road between the Old Badger and the King's Head. Can you suggest or provide some street party entertainment?*

*There is a lot to think about. Food and drink obviously, but also the logistics such as health and safety, hiring of equipment, first aid, waste management, portable toilets, marquees... the list seems to go on and on. Would our Brownies and Rainbows like to make bunting I wonder?*

*If you would like to help the volunteers who have already come forward from the Youth Group and Play Group in arranging this party please don't be shy, they would really appreciate any help you can give.*

***Do get in touch if you can help in any way:***

***Mary Gribble: 01453 825279 or email [mgribble@btinternet.com](mailto:mgribble@btinternet.com)***

## Deadlines for Eastington Community News 2012

Dear Contributors, please ensure you meet the deadlines as set out below - preferably even a few days earlier, definitely before midnight on the day!

**Thank you. Val Taylor (ECN Articles Editor) email: [valtaylor@cressgreen.myzen.co.uk](mailto:valtaylor@cressgreen.myzen.co.uk)**

<b>April/May 2012</b>	Contributions by:	Friday 23 March 2012
	Delivery dates:	Saturday 31 March – Saturday 7 April
<b>June/July 2012</b>	Contributions by:	Friday 25 May 2012
	Delivery dates:	Saturday 2 June – Saturday 9 June
<b>August/September 2012</b>	Contributions by:	Friday 20 July 2012
	Delivery dates:	Saturday 28 July – Saturday 4 August
<b>October/November 2012</b>	Contributions by:	Friday 21 September 2012
	Delivery dates:	Saturday 29 September – Saturday 6 October
<b>December/January 2012/13</b>	Contributions by:	Friday 23 November 2012
	Delivery dates:	Saturday 1 December – Saturday 8 December

## Parish Plan Questionnaire - Early Feed-back

The Parish Plan Team has been busy analyzing the questionnaires collected in the last two months. Early effort is going into data that will support the battles over Housing Numbers with the Stroud District Council, in time for the Village Meeting on 31<sup>st</sup> January.

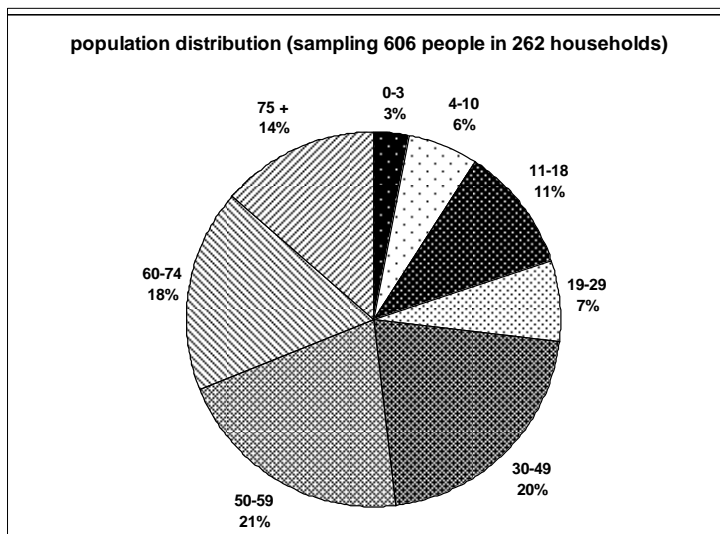
We thought you would like some early feed-back on the data emerging – note that this is incomplete and only a flavour of the very detailed analysis yet to come from Clare Watkins and her team.

### Population analyzed by Age Group

This simple chart shows the percentages for each age group. It is interesting that the three left-hand segments (50-59, 60-74, 75+) add up to over 50%.

Within that, 34% (a third) of us are over 60.

Contrast that with the 19 to 29 segment which shows only 7% in this age group.

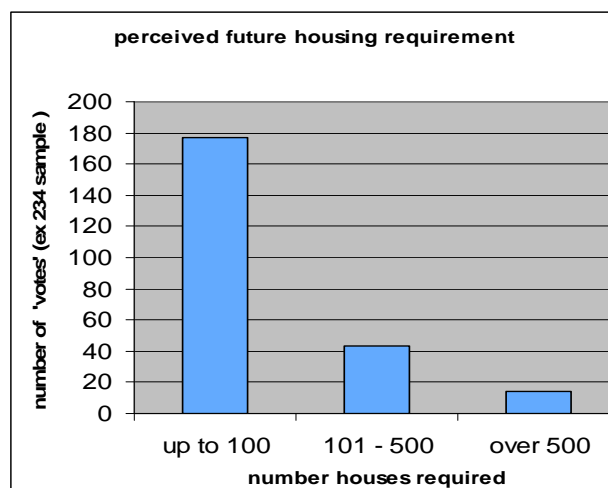


### Housing Requirement Perceived

Early results show an overwhelming desire to manage new housing in the Parish at up to 100 houses in the next 15 years.

This is roughly the rate that the Parish grew in the last decade and helped to sustain our shops and businesses.

Stroud District Council want us to absorb 1,500 houses, which is why we are having a Village Meeting on January 31st.



### Rogue Trader

We have been informed by the SDC Tree Officer of a rogue trader in our district. The individual trades as a tree surgeon and advertises in the local media. He is very convincing and conveys himself in a confident manner. The quality of his work is very poor reducing the life expectancy of the trees that he works on. Residents can find a list of professional tree surgeons at [www.trees.org.uk](http://www.trees.org.uk). If you do not have access to the internet please contact the Clerk, Mary Gribble on 01453 825279 who will assist you.

# **DISTRICT COUNCILLORS NEWSLETTER**

## **CORE STRATEGY (HOUSES)**

A lot has happened on this since my last newsletter. I expect many of you know what has gone on but I would like to follow on from my last report with a run down of events since then. The Cabinet passed the recommendation for the continued exploration of major development in the vale and it was discussed at the Full Council meeting of 24<sup>th</sup> November. As is quite usual the recommendation was amended from the cabinet decision before the full council meeting. The amount of times this happens is just ridiculous. It was apparent that for a variety of reasons the conservative administration would not be able to have a voting majority for the proposals from within their group. On the night of the meeting, before I had even reached the steps to the chamber, I was of the opinion that some sort of arrangement was in place enabling the main thrust of the proposals to go forward. What usually happens with agenda items is that the relative cabinet member proposes the advice with a supporting statement, it is seconded and then members are able to ask any questions they have prior to a debate. The proposal was made but before questions were taken the leader of the liberal democrat group said he wanted to propose an amendment. The chairman said he could do it then. The amendment was a reduction in housing numbers for consultation purposes in Cam Parish and parts of the Stroud Town/Valley's area. It also altered housing numbers in a couple of other areas. The amendment was accepted and a debate on the amendment took place. It was duly passed with all the conservative and liberal democrat members present supporting it. A couple of other amendments were proposed but these were lost. I did not speak on these amendments. I consider I followed properly the process for speaking to the substantive motion. When we finally got to this substantive debate I indicated to the chairman that I wanted to speak. However before I was called a member from a ward with no large housing allocation proposed for the next consultation, after making all the points he wanted to, proposed that 'the motion be put'. This is effectively a guillotine proposal. The chairman then called for a vote which was passed with the support of the conservative and democrat groups. I was, to say the least, rather angry about this. All who voted to end the debate knew that by doing so the member of the ward with the largest proposed housing allocation was being denied the chance/right to speak for the residents of Eastington and Standish. Not very democratic to my mind but thing like this are all too common these days. The amount of time we debated the actual substantive motion was very short in my opinion for such an important subject.

In contrast the Development Control Committee spent hours on just two relatively small (compared to this subject) applications two weeks later. You may hear people saying that 'nothing is decided yet', that it is 'just a consultation' etc. My personal opinion is that the key words in the consultation are whether it is 'all or some' of the sites mentioned that will have houses allocated to them. This just might be what is not decided yet. Residents of the Parish were present and I think justifiably appalled at both the level of debate, the way the debate unfolded and obvious inter-group trade off. All the group of which I am a member voted against the proposals going forward.

Since the decision to progress the mass build option, residents of Nupend/Nastend have formed a group to work alongside the Parish Council and Keep Eastington Rural, to oppose the needless destruction of our rural parish and ancient hamlet structure, with the undoubted detrimental effect mass building here will have on our market towns and the quality of life of all who both live and use the road system through our parish. This group has really hit the ground running. They have done an enormous amount of work in a very short period of time, embracing all of the factors involved. I am well aware of the amount of work, time and effort that has been put in already and the commitment that is needed to obtain the superb results they have already achieved. I will continue, with the help of the rest of my council group, to oppose the mass build option, to promote the ability of the whole district to grow and prosperously develop, allowing the quality of life of all residents to be respected whilst meeting the challenges of the present situation from both national and local planning policy actions. I believe there is a better way than the one proposed, it may involve more work and effort, council wise, than the one proposed but it is achievable in my opinion.

Unfortunately the possibility of housing both in the parish and village has not gone away. I am told that pre application discussions have taken place on a site near to the centre of the village. As it is outside of the village envelope it would normally be refused as being against council policy. However a recent application in Hardwick which again, in my opinion, would normally have been refused because of this policy, was supported by officers mainly due to the five year land supply requirement. It was however refused by DCC members. It has been appealed.

I am sorry to concentrate my report on the Core Strategy. I do get involved with many other subjects of concern to residents but this is such an important issue that will affect us all.

**Ken Stephens January 2012**

## **A Tribute to KELVIN WALSH - 10th May 1952 -19th December 2011**

We arrived late in Eastington on the 21st October 1987 after being held up on the motorway. The Stock taker (at Eastington News) was still here and he finally finished at about 10 p.m. with Kelvin's help. The only furniture was one wooden chair which used to live in the corner of the shop. We had brought bedding and a kettle and some cleaning materials and had planned to go to the Little Chef for something to eat. We did not manage to get there – we also found that we had no heating, but thankfully the local handyman came and got that working again for us. Mrs Bennett kindly took Kim and Tara then 8 and 6 for some homemade chips. Kelvin was up at about 3 a.m. to clear space for sorting the newspapers.

We loved Eastington from the word go and Eastington seemed to take to us. We were blessed with the staff in the shop; Pat Linforth, our mainstay, who knew everything there was to know about the shop and the village. Winnie, who no longer lives in the village, was an integral part of our staff. We could not have managed without Bennie (Mrs Bennett ) or Pam Harris, Patti Barnfield and Clare Stopford. One of my greatest joys over the last few days has been talking to our old members of staff and everyone has told me what a pleasure it was to work for us in Eastington News – Kelvin would have been proud to hear this. 'Eastington News' was a very happy place for Kelvin and I, and all our staff and customers. People came in to buy what they wanted and to catch up on the local news and events as well. It was a meeting place to find out the news of the village.

We tried to support Eastington Primary School and something I can specifically remember is new Netball Kit when our girls were at school. The other occasion which sticks in my mind was an exchange of teachers with Russia. We ran a raffle in the shop to raise money for the Russian teachers, and if my mind serves me right, Kelvin said we would double what we raised. Paul Taylor, sadly no longer with us, put in a fairly hefty donation too when he knew we were going to double the money!

Kelvin was involved with Andrew Niblett right from the start in the creation of the Eastington Community News. He was the treasurer from then until only a few months ago. Kelvin over the years was also responsible for advertising, printing and stapling and always ensured when he was printing – even with the temperamental printer- that it was on time.

When we made the decision to sell the 'goodwill' of Eastington News to Alldays, it was done with a considerable amount of heart searching and we were also forward thinking to the good of the village. We did not want to move and Eastington News was not a viable proposition for someone to purchase and run as a news agency, and we could not foresee working 6 and a half day weeks for years to come.

However, as many of you will remember, Alldays was a disaster as all the things that they had promised they would do for the village they did not do. It caused us both many sleepless nights and heartache. Thankfully when they went into liquidation the shop was purchased by the Co-op and we now have a thriving corner shop.

We both loved this village and its inhabitants. There are many who will miss being "nabbed" for a chat as Kelvin walked by, or indeed as they walked by here if Kelvin was outside.

Kelvin was a very good, kind and loving husband and father and grandfather. Thankfully we have two wonderful daughters and two adorable grandsons who are now my life.

Kelvin was always working on some project or another and rarely stopped he was brilliant at DIY and built our raised vegetable beds and greenhouse and summerhouse, he used to enjoy spending time in the garden with me. We will miss him very much. I would like to thank everyone who attended the service for Kelvin at Cheltenham Crematorium and who came back here afterwards and also to everyone for their donations and sympathy cards – all of which were greatly appreciated by Kim, Tara and I.

**Lorraine Walsh**

## The Temperance Movement and the first Eastington parish magazine

The ECN has been with us for many years and is now a useful and much valued means of communication within the village. However, few readers will be aware that it is not the first such publication that Eastington has had. From the 1880s, through to the early years of the 20<sup>th</sup> century, the *Eastington Parish Magazine* was produced and distributed throughout the parish. It appears to have been largely the brainchild of the local Temperance Association, as each issue carried in a prominent position what the organisation had been doing in the previous month. It also included regular warnings about the dangers of the demon drink! However, there were also numerous interesting articles describing many day-to-day activities taking place in and around the village.

As readers will doubtless already know, the temperance movement advocated either total abstinence from alcohol, or at least, only minimal use. In 1835, the British Association for the Promotion of Temperance was created, and the idea was soon adopted by many working class movements of the period fighting for the right to vote. Some hoped that abstinence would give them an air of respectability and help further their cause. At first, temperance usually involved a promise not to drink spirits, and members continued to consume wine and beer. However, a stronger stance was subsequently taken by the teetotal movement that campaigned against the consumption of all alcoholic drinks. Several attempts were made to ban alcohol completely although these never made it through parliament. Despite this, a number of religious organisations continued to lobby politicians for restrictions or bans on the sale of alcohol. The outcry against the dangers of alcohol in Britain became loudest during the 1880s. The Quakers, the Salvation Army and the League of the Cross (a Catholic group calling for total abstinence), all sought to curb drinking in Britain, and in 1884 the National Temperance Federation was founded in association with the Liberal Party. However, the Conservative Party tended to support the interests of the drink trade and brewing industry.

In many places, the Temperance Association came to have a lot of influence. In Eastington, it was strongly promoted, particularly by some of the wealthier and more powerful residents. Amongst these were the Hoopers, the family that ran the village's cloth mills from the 1830s through to the 1880s. Both Charles Hooper and his son Charles Henry Hooper played dominant roles in the parish. Their cloth-making business was the main local employer and luckily for their employees, both adopted a fairly paternalistic attitude towards their workers, promoting various measures to look after their educational, physical and spiritual needs. However, they were particularly concerned about the effects of beer shops, often converted cottages dotted throughout the parish that sold beer and spirits. In the 1830s, Eastington had no less than 23 beer shops and two pubs - by the 1890s, this had risen to nine. The Hoopers are probably best remembered for the temperance hall that formerly stood in Alkerton, and the drinking-fountain combined with a signpost set up in the centre of the village to mark Queen Victoria's Jubilee of 1897. Local tradition suggests that this was to deflect custom from the King's Head!

Many years ago, the writer was loaned a bound set of the original Eastington Parish Magazine from a late resident in the village. Unfortunately, this was only for one evening! Nevertheless, copious notes were made from many individual magazine articles – many of these little snippets throw a fascinating light on how earlier generations lived and worked within the village. It's hoped that some of these can be reproduced in future editions of the current parish magazine.

### Stephen Mills

#### From Mrs. Muriel Hulbert

I would like to say a big 'Thank You' to everyone who donated to the collection of flowers, card and money after the robbery in my home. I was very touched by the kind thoughts and generosity of the 'Community Spirit' of the Village.



## **A reminder to those yet to complete the Broadband Survey:**

You will remember receiving the *Household Internet and Broadband Survey 2011* in the previous edition of ECN. Below is an edited reminder (plea?) from Gloucestershire First asking households to complete and return the survey to the Freepost address printed on the form. The survey remains available online at [www.gfirst.co.uk/broadband](http://www.gfirst.co.uk/broadband) and I can provide hard copies of the survey (with returnable freepost envelopes) for anyone who can't access the survey online.

Some of you have already completed the household survey which is currently in circulation - for this I express my thanks. It is important that as many people are encouraged to complete the survey; it will provide Gloucestershire First (who are leading this project in the county) the factual evidence required to successfully negotiate the best solution for Gloucestershire with the private telecoms providers.

In the previous ECN, I wrote about alternative broadband provision. This is a wireless broadband provision which doesn't require a telephone line. To make it work it needs some community input in the form of a volunteer on the Broadfield Road area and one in Cress Green to host a relay node point. If any parishioner in these areas would care to discuss this, please email me at [greenaway.parish@btinternet.com](mailto:greenaway.parish@btinternet.com) and I'll be happy to discuss it with you.

**Derek Greenaway, 22 January 2012**



*Parishes and market towns throughout Gloucestershire are backing a campaign to bring high-speed broadband to the county's rural areas.*

*Borders Broadband is a £14.4 million initiative to secure private investment in a new fast rural broadband infrastructure. The project is managed by GFirst (Gloucestershire's Local Enterprise Partnership), Gloucestershire County Council, Herefordshire Council and Broadband Delivery UK.*

*A Gloucestershire-wide survey of households and businesses is underway to show there is demand for fast broadband in rural communities. And so far, 311 volunteers covering 135 parishes across the county have stepped up to become 'broadband champions' for their communities.*

*Please complete a questionnaire for your household. If you have internet access, you can do it online at [www.gfirst.co.uk/broadband](http://www.gfirst.co.uk/broadband) or hard copies are available at libraries or from district and parish/town councillors, or broadband champions.*

*Questionnaires are also available from Gloucestershire Rural Community Council (GRCC) – contact Chris Cowcher on 01452 528491. Also contact GRCC if you would like to volunteer as a broadband champion.*

*There is a separate survey for businesses online at <http://bit.ly/betterbroadband>. If you run a local business and live in Gloucestershire, you can complete both residential and business surveys.*



### ***DO YOU PLAY or HAVE YOU PLAYED CRICKET?***

Eastington Cricket Club requires players of ANY standard for the 2012 season, with most Saturdays (league) and friendlies on Sundays, midweek days and midweek evenings. We play and practise at OHMG.

Any standard/ability is welcome, to keep our club going.

**Please contact Steve Gallagher on 01453 791209**



## **A distressing account from an Eastington Resident...**

"I had a paramedic come to my house about 9pm on the 3<sup>rd</sup> January 2012 through my front gate. Unknowing to him, he had walked through a very large size dog mess right outside my front gate. This was tracked all over my hall carpet and into the bedroom. This paramedic had to go back to his depot to change his footwear and have the driver's side of his vehicle sterilized because he was not allowed in anyone's house. He was therefore off the road for over an hour which could have meant someone dying because no one was available.

So come on dog owners, think of other people and pick up you dog mess and take it home."

## **... and a wake up call to lazy dog owners from the dog warden**

Dog owners of Eastington please wake up to your responsibilities; we know the majority are responsible but a few are spoiling things for many people in the community.

We remind you that Stroud District Council have adopted the Dogs (Fouling of Land) Act 1996. This makes it an offence if dog owners do not clean up after their dogs when they foul anywhere to which the public has access. This includes roads, pavements, playing fields and Alkerton Green.

### **OFFENDING OWNERS RISK PROSECUTION WITH A MAXIMUM FINE OF £1,000**

Remember you are being watched. I am stepping up patrols in the Eastington area and irresponsible dog owners will be caught and prosecuted.

We urge everyone to be responsible at all times and always clean up after their dog. Fouling is both unpleasant and a health risk, particularly to children.

Please always carry a poop scoop and be prepared to use it! If you have any dog related queries I am happy to give advice or if you have information regarding offending owners please contact me. I need your help to solve this problem.

**Alex Davies, Animal Welfare Officer, Tel: 01453 754492**

## **Your local Neighbourhood Warden: Morgana Simpson**

Morgana covers the following areas:

Stonehouse, Eastington, Kings Stanley, Leonard Stanley, Frampton on Severn, Whitminster, Arlingham, Fretherne with Saul, Standish and Moreton Valance

As your Neighbourhood Warden, Morgana provides support and can help you with the following issues:

- ☐ Supporting Vulnerable People
- ☐ Intimidating or Anti-social Behaviour
- ☐ Abandoned Vehicles
- ☐ Bogus Callers
- ☐ Home Security & Crime Prevention Advice
- ☐ Hate Crime & Bullying
- ☐ Litter, Dog Fouling & Fly tipping
- ☐ Lots, lots more



**If you have concerns on these or similar issues you can contact me on 01453 754514 or 07876 405 833 or email [morgana.simpson@stroud.gov.uk](mailto:morgana.simpson@stroud.gov.uk)**

## Distraction Burglaries

The M.O. for these offences is individuals acting as water board officials to gain entry to your home – with all offences occurring during daylight hours. Whilst arrests have been made, it is important that we remind our vulnerable residents as to the threat of Liberal (distraction) offences. **Call a Friend cards (see below) and Bogus Caller leaflets are available from Community Safety 01453 754514.**

### Crime Prevention Advice:

- If you're not sure who is at your door, don't open it. Check the identity of the caller by calling the company they are purporting to be from, i.e. gas, electricity, water etc. Use the telephone numbers listed in your local directory or provided independently by your service provider – DO NOT use any telephone numbers provided by the caller – these may be bogus.
- Telephone a neighbour or a friend nearby to come along and check out the caller before you open the door to them. The Stroud Safer Community Partnership operates a 'Call a Friend' scheme. The scheme is simply a card which is kept next to the telephone, and can hold up to 2 nominated friends' contact details who can be contacted if a stranger comes to the door. The Community Safety Service hold a stock of these cards which are free of charge – 01453 754947.
- Many service providers operate a password scheme, so please sign up to these. When strangers call at your door they should know the password if they are genuine.
- The 'Water Board' no longer exists, it is obsolete phrase used only by bogus callers.
- Don't keep large quantities of cash at home; put it in the bank where it is safe.
- Keep doors locked and windows secure at all times.
- Ensure that if you do let somebody in to your home, you close the door behind them – distraction burglars often work in teams, where one will distract you whilst the others sneak in through insecure doors.
- If someone asks for help i.e. needs to use your telephone, lost ball in the garden, needs a drink for example, refer them to another younger neighbour or assist them through a closed door. Alternatively, call a friend or neighbour to assist.
- **Not sure? Don't open the door.**

### RECEPTION/ADMIN ASSISTANT required by The Severnside Osteopathic Practice in Saul

10 hrs per wk with flexibility. £8.50 per hour.

Will suit reliable, well-presented and discreet self-employed person already doing similar work for others. Apart from pre-arranged holidays, this work will be on-going, and so the position is best suited to someone who is able to commit to 10 hours per week including, for example, during school holidays.

Good computer and telephone skills required. Access (database) skills desirable. The successful candidate will be subject to a CRB check.

In the first instance please email **Caroline Tosh** at **ctosh1@talktalk.net** for a job description and details of how to apply.



### REDUCE YOUR ENERGY USE AND CUT FUEL BILLS!

By combining expert assessment of the property with an impartial, technology neutral approach, The Severn Wye Energy Agency can help you install the right measures for your property and the price subsidised by Stroud District Council includes:

- Detailed full home energy survey
- Discussion of options for your home
- Written report with recommendations
- Assistance with obtaining quotes/planning
- Continued support and advice
- New EPC once improvements are made to the property

#### REDUCE YOUR ENERGY CONSUMPTION!

**50% off! Only £180 for Stroud area residents**

For more information or to arrange a survey, please contact the Severn Wye Energy Agency.

**Call: 01452 835077**

**Email: [target2050@swea.co.uk](mailto:target2050@swea.co.uk)**



# Eastington School Parents Association and Friends

Dear Villagers,

The Parents Association and Friends would like to say a huge 'Thank You' to all who attended/ helped/ donated and supported our events last term. It was fantastic to see new people enjoying the events and generously donating time and/or items too.

So far this school year, with your help, we have raised the following money which will go towards paying for our new ladybird canopy and our target of £5000 for a new reading scheme for the whole school.

- ✓ This year's Christmas Bazaar was a great success, raising £1607!
- ✓ The joint Christmas Party (over 18's) raised £300 for the school (the same was also donated to Eastington Playgroup and Youth group).
- ✓ Halloween Party for kids raised a spooky £439.
- ✓ Cake Sales (generally monthly) have thus far raised £122
- ✓ Bag2School (part one) raised £260 (please keep collecting)

It's not too late to get involved or attend ongoing events. We have the following in the pipeline for this term:

## **Nearly New Jumble Sale and Plant Sale - SATURDAY 24 MARCH, 10 -11.30am**

To be held in the school hall. Come along and grab a bargain, most items 50p to £5. Donations gratefully received on Friday 23<sup>rd</sup> March. Remnants will be added to the next Bag2school collection.

## **Bag2school (part two) will be taking place on Tuesday 27 March**

Please keep collecting your unwanted clothes, fabrics etc. We are hoping that this project will reach a total of £500.

**On behalf of everyone on the PA team, we wish you all a happy, healthy and Prosperous New Year.**

**Karen Hayes**



**Eastington Community Centre**  
[www.ohmg.org.uk](http://www.ohmg.org.uk)

Available for parties, regular bookings, sports events, clubs,  
wedding receptions

**NOW WITH FULLY RESURFACED CAR-PARK**

<b>Tuesdays:</b>	<i>Blue Frog Fun Drama Workshops for 5-11yrs. 6-7pm.</i>	<b>Tel. Liane 07969 436138</b>
<b>Wednesdays:</b>	<i>Just 'B' Aerobics and Fitness. 7.30-8.30pm.</i>	<b>Tel. Bryony 07906 581450</b>
<b>Thursdays:</b>	<i>Yoga. 8-9.30pm.</i>	<b>Tel. Carol 07814 341092</b>

**Cricket:** *Eastington Cricket Club usually play every fortnight during summer months.*  
**Tel: Ron 01453 822942**

**Football:** *Regular Alkerton Rangers first and second matches throughout the football season.*  
**Tel: Martin 01453 828712**

*Eastington Community Centre is the home of Eastington Playgroup. Tel. 07977 342742*

**Contact Vanessa on 828557 for a friendly chat and more information**

## Village and Community Agents

I have been asked to become your village agent. You will now be wondering what this means. What am I selling? Who do I work for? Do you have to pay anything?

The answers are: I do not sell anything; I am employed by Gloucestershire Rural Community Council, and they pay me to work between 10 and 15 hours per week.

So what am I hoping to do for you? Basically I am a problem solver for all those over 50. For example you may think you may not be getting the right benefits; you believe it would be helpful to have a grab rail; you find getting into the bath difficult; or you think you or your relatives might worry less if you had a Careline. There are a great number of things that are available which you may need help accessing. That is why village agents are employed, namely to give information, help and support. Anything we do is not passed onto anyone else unless you give your consent for us to do so. Simple or more complex issues may worry you. Please phone me and I will see how I can help. If I do not answer the phone do leave a message and I will get back to you as soon as I can.

**Sue Colquhoun Tel: 07810 630 145**

## Stroud and District Citizens Advice Bureau

As we have just enjoyed the Christmas season it seems appropriate to remind you of the work done by the Stroud and District Citizens Advice Bureau. Its aim is to advise people on their rights and responsibilities in trying to find a resolution to the problems they face.

It seems that in many ways the Bureau is in fact one of the emergency services. An illustration of this is given below by one of our volunteer advisers.

*A man came to the bureau extremely stressed and unable to think straight because of his multiple problems. He became visibly less agitated as his discussion with the adviser helped him to consider the options available and left him better able to deal with the issues confronting him.*

Last year the Bureau helped over 3,700 such people, several of whom came from your parish. After a first interview those who can help themselves are encouraged to do so. Some, where appropriate, are redirected to organisations that can help while others need more help from the Bureau. Last year, advisers wrote over 3,200 letters and made over 900 phone calls to third parties. Effective advice requires expertise and understanding and often calls for investigative skills on the part of the adviser in order to get to the bottom of the issue.

None of this comes without cost. Many people do not realise that the bureau is a charity. It is grateful for the support it receives from Stroud District Council, without whose help it would be unable to continue, but increasingly it has to turn to local people to maintain the service. We are asking you to consider supporting the Bureau this year, when we are most aware of those in our community who need help.

The generosity of those in this parish who have already decided to support the Citizens Advice Bureau is gratefully acknowledged.

If you feel you can support the Bureau with a standing order, please note that the Coventry Building Society (formerly Stroud and Swindon), has committed to doubling the value of new standing orders (up to the value of £15,000) for one year. So your donation achieves even more!

For more information please contact us via the editor or visit the website [www.strouddistrict.org.uk](http://www.strouddistrict.org.uk). If you would like to give on-line, please follow the links from the website to Virgin Money Giving. Thank you!

**Judith Newman, Fund Raising Committee**



# ST. MICHAEL AND ALL ANGELS' CHURCH, EASTINGTON

## One of the 'Cotswold Edge' Parishes

(Eastington, Frocester, Haresfield, Moreton Valence, Standish and Whitminster)

**Our mission is: to show God's love for His people, and nurture His people's love for God**

THE RECTOR WRITES



Dear Friends,

Sometimes things just seem to get on top of you, and it's easy to succumb to feelings of inadequacy and despair. The book of Job gives an insight into how one godly man coped. He lost his 10 children, over 11,000 animals and many, many servants in a series of disasters, culminating in sores all over his body, brought about by Satan in an attempt to make this very wealthy man turn against God. Three of his friends come to 'comfort' him, but although they mean well, they are of no help, and they just seem to make matters worse. It's not until he hits rock-bottom that God speaks to him and ultimately restored him

to more than his former wealth and a new family.

Many of the Psalms also express feelings of alienation and defeat – but they also speak of turning to God and finding refuge and hope. Much church music reflects this, both classical and popular. A few years ago I asked members of our congregations to choose their favourite hymn for a 'Songs of Praise', and was surprised by the large number of choices that were Passiontide hymns – ones more associated with being sung in Holy Week and on Good Friday when the focus is more about the trial, torture and death of Jesus. King David wrote Psalm 22 – but it could almost be a meditation on the circumstances of Christ's death, although written hundreds of years before.

Humans suffer, to one extent or another, in many and varied ways. To be fully human, Jesus also had to experience suffering. The temptations he faced in the wilderness seem fairly innocuous compared to the mocking, scourging and crucifixion of his passion. Fortunately for us, temptation is likely to be what we face, rather than physical violence. However, the effect that giving in to temptation can have can be very far reaching.

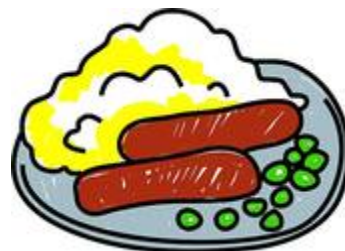
If we think of our own needs, make wealth our goal, and turn our back on God, then we give in to the temptations Christ faced. Some would argue that many have already done this, which is why our world seems to be in such a sorry state.

You may like to repond by taking time to reflect on these matters and others during the season of Lent, which starts on Ash Wednesday (February 22<sup>nd</sup>) with a service at Whitminster at 7.30pm. On the day before, Shrove Tuesday, Gloucester Cathedral hosts the annual Quiet Day 'Led by the Spirit in the Wilderness'. It will run from 10am to 3.30pm and include the Eucharist and short forms of Morning and Evening Prayer. There will be addresses, silence, prayer stations and space. The addresses will be given by Bishop Sadock of Western Tanganyika, Bishop Mary of El Camino Real and Bishop Michael. From Mondays 5<sup>th</sup> March until 2<sup>nd</sup> April at 10.30am at the Rectory I will be hosting a bible study time based on Bishop Michael's 'Rivers of Living Waters', and this is open to all. I hope you can come.

Yours in Christ,  
Rector

### **Bangers and Mash evening**

'Bangers and Mash plus Crumble' evening at the Rectory on Thursday 16th February at 7pm. £5 a head (including 1st drink), with a raffle on the night. Please contact the Rectory (01453 822437 or [richardjramys@aol.com](mailto:richardjramys@aol.com)) to help with planning. Proceeds to Eastington Church



### **Books to Borrow or Buy**

There is a library at the back of Eastington Church from which books can be borrowed or bought. The Church is normally open during the day, and donations can be put in the little wall box next to the main door. Please come in and have a browse!

## WILDLIFE HABITAT SURVEY OF THE PARISH

### Date for your Diary.

Last year I attempted to start a parish wide survey of wildlife habitats so that we could identify and locate important areas and make sure they are properly safeguarded. Such information can also be used to guide where new habitat could be created or restored so that small isolated sites can be joined together making them better for wildlife. The first step is to gather evidence by carrying out a detailed survey in the Spring and Summer of 2012.



I arranged a training day for volunteers last year which it had to be postponed – too late then to re-arrange as the bulk of the survey season had gone. Hopefully the date set for this year's training event doesn't coincide with a royal wedding, important sports event or bank holiday! I have scheduled it for the afternoon of **SATURDAY 14th APRIL** (venue to be determined). We will start off in doors to learn about the surveying techniques. Basically it involves marking habitats, land use and important features on a map, in line with a detailed key. This is then colour coded to provide a visual impression of land use and habitat distribution. The information can be digitised so that it is available for many uses. It can also be compared with the results of a similar survey carried out across Gloucestershire in the early 1970s so that we can see what changes have occurred. After the indoor session we will go out into the field to put it into practice. After that volunteers will be allocated a local patch to survey and provided with maps and all the necessary information.

If you would like to join in the survey please contact me and I will send details of the training day.  
[colin.studholme@gloucestershirewildlifetrust.co.uk](mailto:colin.studholme@gloucestershirewildlifetrust.co.uk)

## The Eastington Allotments Society

### – Stephen Gribble

Since my last allotments piece there have been wholesale changes at the top and a completely new (with the exception of Sid) TEAS committee has taken up office. I would like to take the opportunity to thank the outgoing committee members for their input over the first couple of formative years and to wish the new committee a relatively stress free reign.

One job I wasn't able to pass over was the writing of this article for ECN. It may just have been the case that I really didn't want to miss out on the bi-monthly pressure and panic of the deadline day/hour/minute. Fortunately, this year, at least I didn't have to worry about it over the Christmas period thanks to the new schedule for the ECN.



Generally allotments are associated with fruit and veg. growing but the more ornamental plants can have a part to play on the plot and, at this time year in particular, any signs of growth is incredibly inspiring, to say the least. The sight of the breaking of the bare soil's winter formed crust and the first glimpse of green shoots of the daffodils could be regarded as glimpse of one's own personal heaven (wait a minute....where did all this romantic poetry stuff come from suddenly...Wordsworth, eat your heart out). So maybe this year, let's see a few more flowers. A little colour does not have to take up much space. I am sure everyone has some small areas that are not being fully utilised for vegetables.

If you are just content with fruit and veg, then similar sentiments could be also attributed to your broad beans and rhubarb. I am just guessing but I don't think Wordsworth wrote much on these. Finally, for anyone who's New Year's Resolution was to take up a healthy and productive activity this year, now is the time to get your name down on the waiting list.

**If you are interested please visit the Allotments page on the Eastington Parish Council web site, where you will find details of the new committee or phone Muriel Bullock on 01453 826179.**

# CHURCHEND ORCHARD now has 27 TREES

Happy New Year from the Community Orchard Group!

We are also a year old now and in that time have created our first orchard:

- changing a cow pasture into a village asset
- raising over £5,000 in grants, loans and apple juice sales
- trans-planting 100 blackcurrants and raspberries
- starting a strawberry bed of 40 plants from 3 seasons
- planting 27 saplings (apples, pears and plums)
- having lots of exercise in the fresh air!

The general plan is to have the fencing, gates and path up together for an opening to the community late spring – possibly to link with the Diamond Jubilee.

The photo below shows the main apple tree saplings with their protective mesh (to deter both the rabbits and the deer). Trees and supports have been paid for by a grant through Stroud Valley Project.



## Apple Days – the continuing success story

In the autumn the Group made a spectacular amount of apple (and pear) juice, officially scrumping 24 gardens and small orchards across the parish.

Selling through Xmas fairs, ECO Group members, Youth Group and Stroud Shambles Market, we raised just over £ 1,000 !

Thanks to everyone who helped on Apple Days and afterwards on market stalls and village halls.

## Plans for the Spring

Here's a happy ECO Group work party enjoying the sunshine in Churchend Orchard this winter. Why not come along and join us for a healthy morning outdoors?

Grafting Courses will also be available at Day's Orchard, so you can learn the old skills.

**Details on the Website:**

<http://www.eastingtonorchards.org.uk/>

or ring **Kevin Dalby, Orchard Warden:**

**Tel: 01453 827401**

Membership is free to residents.



\* to see the orchard (and the people!) in colour view "Community News" at: [www.stroud.gov.uk/eastington](http://www.stroud.gov.uk/eastington)



## ***Update from Eastington Youth Group***

We have been quiet over the festive season, but with the New Year ahead of us we are starting to plan events and activities for our community. We are looking at organising a carpet bowls evening, pizza evening, litter picks followed by refreshments, trips out and much more...

Our Youth Bus has still been visiting the village every Tuesday but recently the bus has been collecting the youngsters and taking them to a youth facility in Stroud, where they play games, chill out etc. This week they went shopping to Tesco, bought ingredients and made pizzas. The Youth Workers are available to speak to the youngsters about any problems they may be experiencing, careers advice and a wide range of topics. There is no cost to attend and you are picked up from Eastington and dropped off after the club. If anyone is interested in attending please contact me (details below).

Our long term aims are a POD/meeting place for the young people and a village park to suit the needs of the whole community. Once we have the results from the Parish questionnaire we will have an idea of what the community would like, and we can then work to try to achieve this.

Look out for posters on the Parish Council notice board of events coming up.

**For further information please contact Tina on 07891 579754**

## ***Eastington Brownies***

A fun start to 2012! Lots of games played including a rather intriguing puzzle involving Brownie pairs and two pieces of string.....???

We have lots of creative activities planned for the coming months which will include working towards our "SEASONS" badge. We will also have a special evening in February when six of our Brownies will be enrolled into the pack. Our hive of activity will see the Brownies creating all sorts from Bird feeders and Bird boxes for Valentines and Mothers day gifts. We will also be sampling some tasty treats to celebrate Burns night and Shrove Tuesday....pans at the ready!!!

**Sound fun to you? Why not join us?** Brownies meet every Monday evening, 6 - 7.15pm (term time only) at Eastington Village Hall. All Brownie girls are age 7-10 years. If any parents/grandparents of Brownies are interested in seeing what goes on why not join in for an evening (or two?)

**We are looking for a leader to join our team, no experience necessary, just enthusiasm!**

**Could this person be you or someone you know?**

**If you would like more information please contact Vanessa Cousins 01453 828557**

## ***Alkerton Rangers Football Club***

**Saturday 7th January** - Alkerton Rangers welcomed in the New Year with a friendly between the First and Reserve teams at Snakey Lane. In a pulsating game the Firsts scraped home 4-3. The Reserves twice took the lead in the first half as the sides went in 3-3 at half time. The highlights of this goal frenzy were the long range strikes from Chris Pearce for the Firsts and James Mitchell for the Reserves. As legs tired after the Christmas festivities the winning goal came courtesy of a looping far-post header from the Firsts' player-boss Kev Hill.

### **Saturday 14th January - Stroud & District League Division Five**

Alkerton Rangers 6 Tetbury Town 3rds 1

Rangers began 2012 in splendid fashion with a comprehensive victory. Despite going 0-1 down early on they dominated and hit back to lead 3-1 at half-time with two goals from Adam Churchill and one from Steven Morgan. Keeper Warren Gray made a crucial save when it was 1-1. The second half continued in the same vein with Rangers creating more chances. Churchill grabbed two more goals bringing his personal tally to four and Paul Wilkinson scoring from the penalty spot to cap a fine all-round team performance.

**Paul Burn**



## Eastington Methodist Church

Christmas for me is a fast fading memory and I guess for many of you. Life has returned to normal. If you are anything like me, you are still trying to get rid of the flab acquired over the festive season (and in my case not helped by an all inclusive holiday immediately thereafter).

It is easy to allow our lives to get flabby in the spiritual sense in just the same way as it is easy to eat too much and not get enough exercise. Perhaps you once went to church but stopped because of having young children or a new interest such as a sporting activity. These original reasons may have long passed by but you never returned.

Ignoring our spiritual needs is similar to ignoring our health needs and possibly worse. Medical experts tell us that being over weight, eating the wrong things and not getting enough exercise are bad for us and can take years off of our lives. We risk losing many more years if we smoke, drink too much or engage in unwise lifestyles that expose us to diseases of one kind or another. We also do not feel as well in ourselves as we otherwise could.

The only remedy is to give up the bad stuff and start to get into the habit of doing the good stuff. So it is with the Christian faith. To get the benefit means spending time with God and worshipping Him as part of an on going relationship. If you are expecting to meet God in Heaven when you die, you need to get to know him first.

There are other parallels. Jogging in company with others ensures that you actually get out there and do not take the short cut home. Dieting as part of a group means that they can encourage you to resist that overwhelming desire to sit down in front of the telly and eat whole bars of chocolate.

So it is with faith. We need each other to be encouraged and share our successes (and sometimes failures) together.

May I encourage you to go back to church - if ours is too lively for you, find one with an environment in which you feel comfortable. If you have never, or rarely, been to church, please don't be put off by occasional experiences of the odd Christening, wedding or funeral - or worst still, school assemblies. Just come.

### Events Coming Up:

We are hosting The Venue youth meeting on Sunday February 12th at 6:30pm. We will be joined by young people from all over the area in what should be a very good event and food will be available. Young people from Eastington are welcome to attend whether or not they are currently involved with any of our activities. There is another Venue meeting on March 11th at Five Valleys (lifts available).

On Wednesday 15th February at the church there is one of our Tea & Chat drop in sessions at 3pm - 4:30pm. This is completely informal and an opportunity to meet with friends and/or make new ones.

Just a reminder that we have Mothers and Toddlers at 10am on Mondays, Kidzone at 6:15 - 7:30pm on Wednesdays (in term time) and Youth Club in two sessions 7:00 - 8:45pm and 9:00 - 10:00pm on Fridays.

Bible studies are running at 1pm at the church (lunch provided) and at 8pm at the Pike Lock House on Tuesdays.

Our main Sunday morning service is at 11am and children have their own Sunday Club.

**Ken & Beck Burgin 01453 827414**

[www.EastingtonMethodists.org.uk](http://www.EastingtonMethodists.org.uk)

---

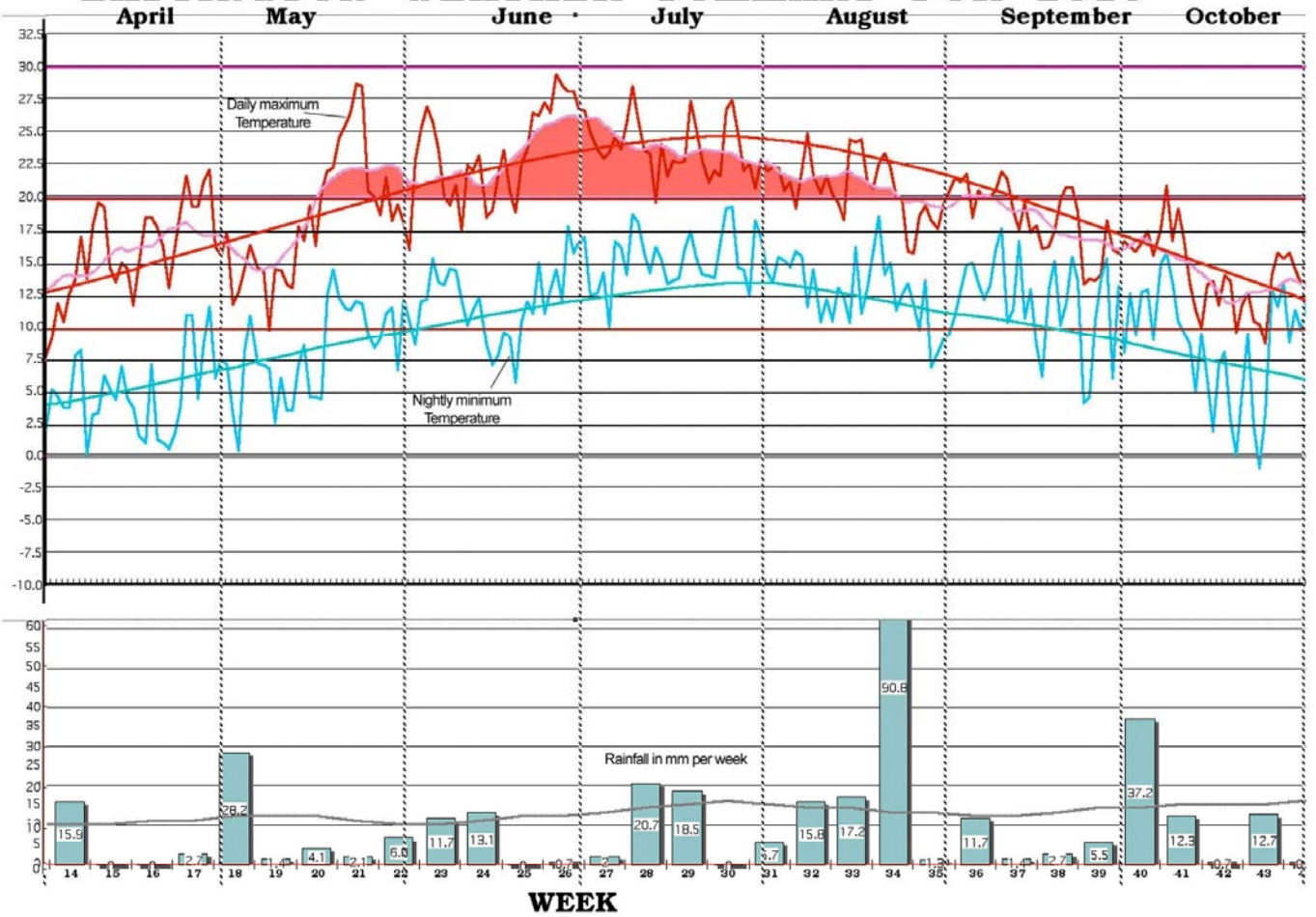
### Eastington Bluebell Club - for Ladies and Gents over 60

Bluebell meetings will start again in March, as always, on first and third Tuesday, 2.15 at the Village Hall.

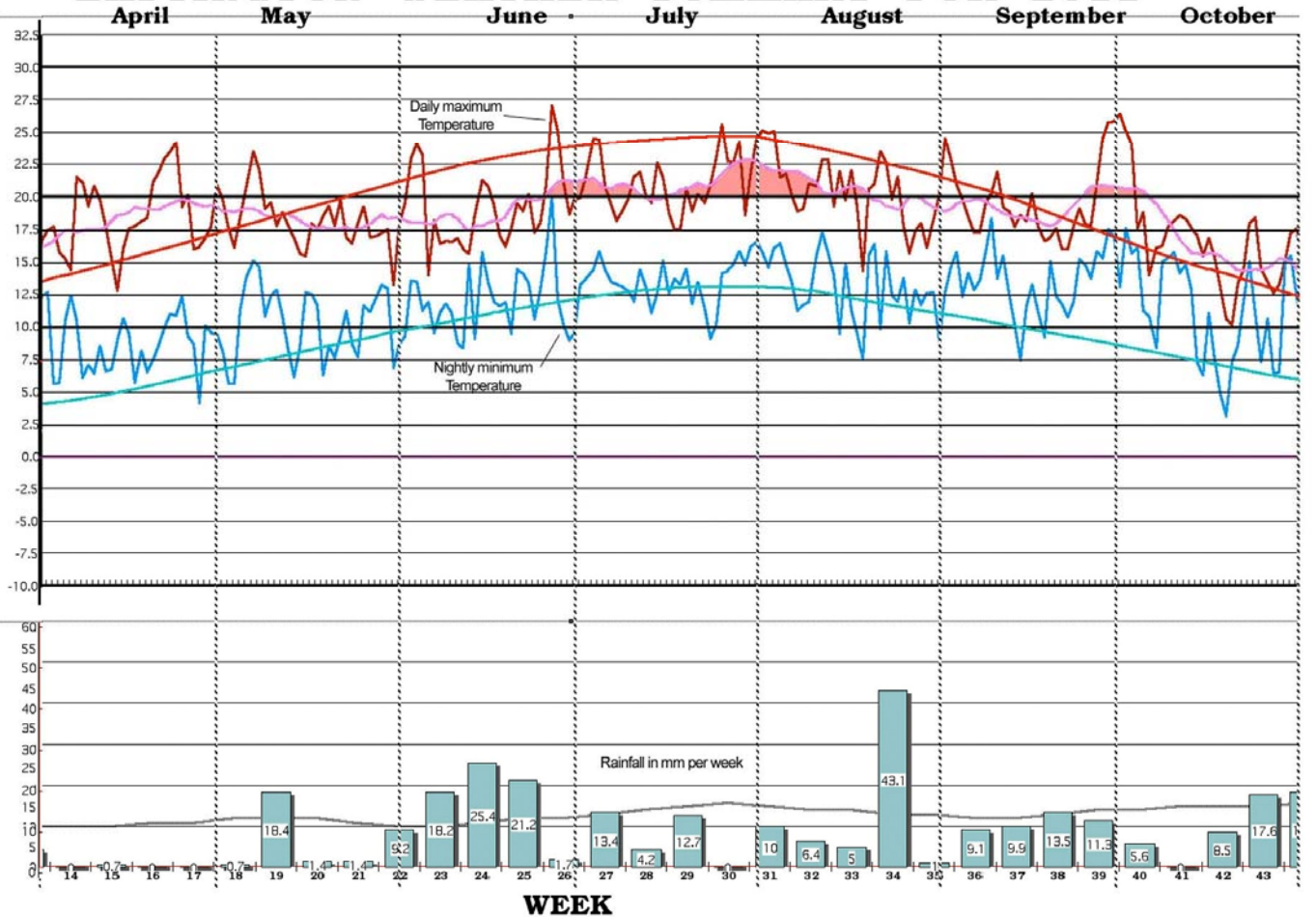
For further details about the Bluebell Club, please contact Anne Shill, Tel: 01453 822061

---

# EASTINGTON WEATHER SUMMARY FOR 2010



# EASTINGTON WEATHER SUMMARY FOR 2011



**Eastington Weather Summary** - Mark Campbell, who lives in Westend, has for many years been collecting data on the weather in Eastington. For ECN he has produced these graphs showing temperature and rainfall from April to October for the summers of 2010 and 2011.

### Temperature

The smooth curves show long-term mean temperatures gathered from local records (and averaged out with some smoothing), while the zigzags show daily maximum and minimum temperatures.

Compare the top zigzag lines for the two years (daily maximum temperature). It can be seen that 2010 had a greater contrast in temperature over the period and, as you would expect, was cooler in April and October. From mid-May to mid-August the temperature most days exceeded 20 degrees centigrade, peaking at 28.6 degrees on 23 May and 29.3 degrees on 26 June.

We all remember how warm it was in April 2011! On 23 April the temperature was 24.1 degrees - only two other days of the year were warmer - on 26 June it reached 27.1 degrees, then we had to wait until 1 October for 26.3 degrees. This 'flat' trend for the temperatures is most unusual and is a result of the jet stream movement over 2011. However these abnormal conditions both hot and cold will occur more often due to global weather instability induced by global warming.

### Rainfall

Farmers and gardeners particularly will remember that dry April of 2011 - great for preparation and planting, but by the end of the month some were praying for rain! Rainfall for the two years was otherwise comparable. However the last two summers were much drier than the seasonal average for our village - in 2011 we had nearly 200 mm less rain than normal. One observation - don't plan your wedding for the fourth week in August - that was the wettest week in both summers!

So, after this very mild winter, what happens next? We hope Mark will produce winter graphs comparing 2011 and 2012 later in the year.

\* to see the graphs in colour view the "Community News" at: [www.stroud.gov.uk/eastington](http://www.stroud.gov.uk/eastington)



We welcome back the children to Playgroup and look forward to a great year ahead in 2012. Following busy fundraising events and a fabulous Christmas Nativity performance we now look forward to some sunshine and letting off steam outside.



**OFSTED** Since the last Parish Newsletter we have had an OFSTED inspection and we're delighted to have been awarded an OUTSTANDING report from OFSTED for all our hard work. The inspector said 'children are extremely eager to learn and thoroughly enjoy participating in a broad range of stimulating activities. 'Highly skilled and enthusiastic staff clearly know the children's needs well, respecting their uniqueness. 'There is a highly effective partnership with parents and carers'.

We return to playgroup with our focus on people with disabilities, therefore we are planning to look at what our bodies do and how our body helps us. We will have an optician role play area, using musical instruments focusing on listening, sign language and focusing on immobility to give children positive images and experiences. We will also be looking at Chinese New Year celebrations.

**Our playgroup offers care and education for children aged 2 ½ to 5 years in a well established community based group. We offer your children a safe and stimulating environment in which they can grow and blossom into self confident, self reliant and positive little people.**

**Our ultimate goal is to enable the children to have fun, explore and have the freedom to express their individuality, while forming the basis of their education.**

We currently have spaces and operate 4 days a week offering full and half day sessions. We accept government nursery vouchers and other types of employer supported childcare vouchers.

**If you would like more details please contact Mandy Owen, Play Leader – Tel: 07977 342 742  
email : [eastingtonplaygroup@eygloucestershire.co.uk](mailto:eastingtonplaygroup@eygloucestershire.co.uk)**

## EASTINGTON SLIMMING WORLD GROUP

A belated Happy New Year to all the residents of Eastington. We enjoyed a wonderful Christmas at Slimming World. The week before, we held our Christmas party which was a lovely evening. Members brought in some wonderful food to share and we celebrated the festive season together - and all the weight losses that members had achieved during 2011, discussed new fab outfits bought in smaller sizes than last year and plans to enjoy a healthy happy Christmas.

So here we are in 2012 and it's not too late to make a choice to obtain a healthier, slimmer you throughout 2012. We welcomed many new members during January. Remember though you can decide to lose weight and join Slimming World any week of the year. So come along and find out for yourself how to food optimise and lose your extra weight. Slimming World is here to help if you want to lose half a stone for a bikini holiday or for those who have many stones to lose. There is complete confidentiality and no-one will disclose your actual weight, we'll just encourage you and celebrate your weight losses as the weeks go by.

At the end of January the group will vote for their couple of the year so I can update you of our winners in the next issue. We hold lots of competitions from Couple of the year to Greatest weight loss, Woman of the Year and Man of the year. Slimming World is there to help everybody - men, women and 11-16 year olds (11-16 year olds need to attend with an adult and follow our wonderful Free to Go plan). So come along to the village hall in Eastington at 7pm on a Wednesday and you'll find us there waiting to help you get started on the Slimming World plans.

I also run a day group in Stonehouse on Wednesday mornings at St Joseph's church hall, Oldends Lane at 9.30am. This extra group is great for shift workers, young mums with small children and those who prefer to go out during the day rather than an evening. From next issue I will include how Stonehouse group is going as I already have 40 members losing weight wonderfully and some live in Eastington. You can call me for more details or just turn up at one of the venues.

**Best wishes. Lorna 01453821751**

### Parties for Children



A children's jewellery making party is a perfect solution to the age-old problem of birthday parties and school holiday activities! Girls will love getting together with their friends to be creative and inspired. With a huge selection of gorgeous beads and charms to choose from, they will all be able to make something extra special to take home. Perfect for girls aged 6 -16 years. Contact me on [info@bohemianbeads.co.uk](mailto:info@bohemianbeads.co.uk) for more information or meet me at many local craft events. [www.bohemianbeads.co.uk](http://www.bohemianbeads.co.uk); T: 0845 391 8941



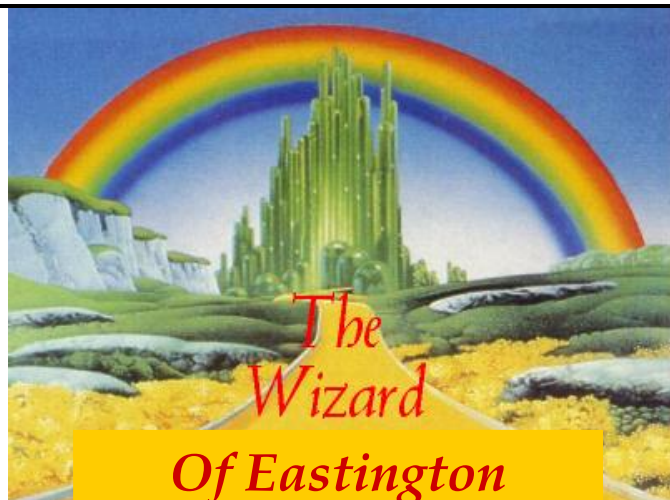
- **Weight loss**
- **Personal Training**
- **Ante and Post Natal health**



Prices from only £15 per month.

Visit our website [www.paravida.co.uk](http://www.paravida.co.uk)  
Telephone 01452 741711





An adaptation of  
**The Wizard of Oz**

**Your Community NEEDS you!**

**The spring production of  
'The Wizard of Eastington'  
is an exciting opportunity to  
join us in a community project!**

Rehearsals Wednesday evenings  
from 6pm, at St Michael & All  
Angels Church (by the school)

**ALL AGES WELCOME**

If you are interested in helping out  
with the production we also have  
the following roles available:

Backstage Support; Set Design;  
Sound & Lighting; Costume; Front of  
House and many more!

Contacts: Robin Harris  
[robin@harrisnestings.fsnet.co.uk](mailto:robin@harrisnestings.fsnet.co.uk) or  
Liane (Director) on 07969 436138  
[info@bluefrog.org.uk](mailto:info@bluefrog.org.uk)

*If you are coming for the first time  
please check to make sure there are  
no last minute changes to  
time/venue.*



## ROTARY SEVERN BORE FAMILY BREAKFAST

**SUNDAY 11<sup>th</sup> MARCH 2012**



one of the biggest tides of the year  
at 09.50 am (+ / - 20 mins)  
at Elmore Back, GL2 3ST

Follow the signs from "The Pilot" &  
A38

Bacon rolls, coffee etc available  
from 8.00am

Free off road car parking

Rotary Club of Severn Vale  
Trust Fund

(Registered charity number 1100046)

raising funds for *Local Youth*  
and other Rotary charities.



For more information  
[www.severnvalerotary.org.uk](http://www.severnvalerotary.org.uk)



## The 23rd Eastington Spring Flower Show

*Garden Maintenance Tel: 07733 454 846*

**Saturday March 17th 2012 at 2pm -3.30pm in the Village Hall  
Admission 10p**

### **RULES**

- (1) The hall will be open to exhibitors from 9am on the morning of the show. All exhibits must be staged by 11am at which time all exhibitors must leave the hall. Presentation of trophies at 3.30pm - no exhibit to be removed before 3 pm.
- (2) Exhibitors' cards corresponding to the entries will be handed to exhibitors by the show secretary and exhibitors will be responsible for the proper placing of their cards with their exhibits. An exhibitor may only enter one exhibit per class. Each exhibitor using separate entry forms.
- (3) Exhibitors must provide their own bowls, vases etc for display of their exhibit. All exhibits entered must be staged.
- (4) The judges may modify or withhold any award if the exhibits do not merit the prizes offered.
- (5) Any unfair means to obtain a prize will forfeit all claims to prizes.
- (6) The judge's decision is final.
- (7) The committee cannot accept any responsibility for loss or damage to any exhibit or accessories to an exhibit. It reserves the right to move any exhibit to assist display.

OPEN TO RESIDENTS AND MEMBERS OF ORGANISATIONS IN THE PARISH OF EASTINGTON. CLASSES FOR EVERYONE - PLEASE PARTICIPATE AND MAKE THE EVENT A SUCCESS.

### **ENTRY FORM FOR EXHIBITOR**

Entry forms to be sent, together with entry fees, 15p each class (except 34-36, which are free) to the show secretary, or handed to any committee member.

Additional entry forms available from the show secretary.

### **CLOSING DATE FOR ENTRIES March 17th 2012**

CLASS NUMBER	CLASS NUMBER	CLASS NUMBER
--------------	--------------	--------------

I HEREBY CERTIFY that all the articles referred to have been produced by me in my own garden or allotment, or made by me.

Exhibitor's Name:-----

Address:-----

-----

Total remittance:-----

### **THE COMMITTEE THANK YOU FOR YOUR SUPPORT**

Eastington - Winner of Gloucestershire Vibrant Village of the Year 2010



### Hints to exhibitors:

**Read the schedule carefully and be sure that you enter the correct number of specimens in each class.**

<p><b>SECTION (1) POT OR BOWL FLOWERING BULBS</b></p> <p>(1) Massed daffodils. Any number of bulbs.  (2) Trumpet daffodils. 5 bulbs.  (3) Narcissi, short or medium cup. 5 bulbs.  (4) Hyacinth, 3 bulbs.  (5) Hyacinth, 1 bulb.  (6) Tulip, 5 bulbs.  (7) Any other flowering bulbs (Any number).  (8) Amaryllis.</p> <p><b>SECTION (1A) VEGETABLES</b></p> <p>(9) Rhubarb – 3 with leaves  (10) Broad Beans – 6  (11) 2 Spring Cabbage</p>	<p><b>SECTION (2) CUT BLOOMS (OWN FOLIAGE)</b></p> <p>(12) 5 large trumpet daffodils (one variety).  (13) 5 double daffodils (one variety).  (14) 5 narcissi (short cup). One bloom per stem, one variety.  (15) Vase mixed daffodils and narcissi.  (16) 5 tulips (any variety).  (17) 5 Narcissi (polyanthus type/bunch flowered).  (18) 5 blooms, any other bulb or corm. Not double daffodils.  (19) Vase polyanthus, 5 stems.  (20) Vase or bowl primroses, 8 stems.  (21) Vase or bowl wild primroses, 8 stems.</p>
<p><b>SECTION (3) POT PLANTS</b></p> <p>(22) 1 pot flowering cactus.  (23) 1 cyclamen in bloom.  (24) 1 azalea in bloom.  (25) 1 polyanthus in pot.  (26) Collection of polyanthus, 5 - mixed.  (27) Primrose in a pot.  (28) Collection of 5 mixed violas.  (29) Collection of 5 mixed primroses.  (30) Collection of 5 mixed pansies.  (31) 1 pansy in pot.  (32) 1 foliage plant.  (33) Any other pot plant in bloom.</p>	<p><b>SECTION (4) CHILDRENS' CLASSES</b></p> <p>(34) Painting of your favourite T.V. character. Up to 12 years.  (35) Bowl or dish with floating flower heads in. Up to 12 years.  Name and age on the back of all exhibits please.  (36) Decorated Easter Biscuits - 2</p> <p><b>SECTION (5) FLOWER ARRANGMENTS</b></p> <p>(37) Arrangement of flowers in a basket. 18" square.  (38) Arrangement - to a theme of your choice. Max 24" square e.g. song, book title  (39) Miniature spring arrangement. Max 9" square.</p>
<p><b>SECTION (6) COOKERY</b></p> <p>(40) 4 Easter biscuits.  (41) 4 Pieces of shortbread.  (42) 4 Fairy cakes - plain with a cherry on the top.  (43) 4 Rock cakes.  (44) Pot of marmalade.  (45) Quiche Lorraine, 6 – 7" diameter.</p>	<p><b>SECTION (7) PHOTOGRAPHY – Picture taken in the village.</b></p> <p>(46) Children's category - up to 16 years  (47) Adults' category  Maximum size of pictures A4. Please put name (&amp; age if child) on the back of picture.  WH Smith vouchers will be given for 1<sup>st</sup>, 2<sup>nd</sup> &amp; 3<sup>rd</sup> place prizes for this section.</p>

PRESIDENT:	Lt. Cdr. W. R. Harris
ACTING CHAIRPERSON:	Mr W Fletcher
VICE CHAIRPERSON:	Position Vacant
HON TREASURER:	Mr H Elliott
HON SECRETARY:	Mr W Fletcher, 11 Budding Drive, Eastington, GL10 3BN. Tel: 828507
SHOW SECRETARY:	Mrs S Underdown, 3 Middlecroft, Eastington, GL10 3SG. Tel: 01453 823285
COMMITTEE:	Mrs Q Jones, Mrs G Neal

AWARDS:	1 <sup>st</sup> - 25p	2 <sup>nd</sup> - 20p	3 <sup>rd</sup> - 15p
POINTS:	3	2	1

**IN THE EVENT OF A TIE, TROPHIES WILL BE AWARDED TO THE PERSON OBTAINING THE HIGHEST NUMBER OF FIRSTS**

***Prize money to be collected on the day of the show.***

### Trophies

Trophy donated by Highfield Nurseries, Whitminster, will be awarded for most points in the show.

Doreen Fletcher shield for lady with most points in the show.

R.B.L. trophy for most points in section 3. John Ellis Trophy for the most points in classes 27-31.

Hanman Bros. Trophy for most points in section 4.

Cyril Nott trophy for most points in section 6.

Bert Johns trophy for best exhibit in class 12.



Established 1980 - Domestic, Industrial &  
Commercial installations  
(CCTV and Lighting Specialist – fully  
qualified & insured)

Touchwood, Mill Farm Drive, Stroud. GL5  
4LA

**Tel: 01453 751991 or 07860 845015**

**Web: [www.kwelectricalstroud.com](http://www.kwelectricalstroud.com)**

**Email:**

**[enquiries@kwelectricalstroud.com](mailto:enquiries@kwelectricalstroud.com)**



**FROM ONLY  
£299**

**WEBSITE DESIGN AT AN AFFORDABLE PRICE  
ONE COMPLETE ONLINE PACKAGE ... ONE LOW PRICE**

**CONTACT US TODAY**  
Tel: 01453 838120 Mobile: 07973 922983  
Email: [sales@revweb-glos.co.uk](mailto:sales@revweb-glos.co.uk)  
[www.revweb-glos.co.uk](http://www.revweb-glos.co.uk)

**Revolutionary  
websites**  
*We keep IT simple*

## **ED SPENCER FIREWOOD**

All local wood, from sustainable  
sources

**Free local delivery**

Load and log sizes to suit you and  
your fire

**Please ring: 07977185856**

For a quote



**J. Lowe Renovation**  
7, Rectory Lane, Avening, Nr. Tetbury, Glos. GL8 8NN  
Mobile: 07919 912582  
Web: [www.jlowerenovation.co.uk](http://www.jlowerenovation.co.uk)  
Email: [enquiries@jlowerenovation.co.uk](mailto:enquiries@jlowerenovation.co.uk)  
*Building the Future, Restoring the Past*  
Established 1991

### **PUDDLEDITCH FARM SHOP**

Fresh local produce delivered to your Doorstep!

Getting your greens is a breeze with our Puddleditch farm shop veg-boxes.

Fully packed with seasonal goodness, our boxes offer locally grown  
produce at reasonable prices to suit every household. Enjoy it weekly,  
fortnightly or as a one off – what ever is best for you.

With our new farm shop opening in Berkeley Heath, there's no easier way to get your five-a-day!

Contact either: Stuart: 07812402561 or Pete: 07774958228.

Or email us at: [puddleditchfarmshop@hotmail.co.uk](mailto:puddleditchfarmshop@hotmail.co.uk)

