

Eastington Community News

April / May 2012

Nº. 132

Welcome to our Spring edition and the beginning of our 'advertisers' year. It is advertisers' subscriptions alone that fund our improved magazine and bring this free to every home in the Parish, six times per year. Please take a moment to look at the advertisements within.

The sight of the first bluebells and violets in Five-Acre Grove this March morning were an encouraging and positive sign of things to come. It's lovely to read 'Birder in the Parish' and we are reminded of the rich diversity of bird-life in our locality (**page 18**). We are of course blessed with a wealth of natural plants and animals in our neighbourhood and are so fortunate compared with those living in urban areas. With Stroud District Council's (SDC) threat of large-scale urban development in our Parish, it will be timely to **survey and record the wildlife** living with us here. So, please make a note in your diary to join Colin Studholme on **Saturday 14th April** for the first meeting (**details on page 7**). Call me if you cannot reach him by e-mail and I will pass on your message.

We have reports from our District Councillor, Ken Stephens, and our County Councillor, Tony Blackburn. We are most fortunate to have such councillors to represent and vigorously promote our views. Much of the mechanisms in local politics are tedious and long-winded and our councillors dedicate many hours 'swimming upstream' to get a good deal for us. The entire Parish Council is up for election this time and in future issues of ECN we look forward to hearing in Parish Matters from newly-elected councillors. You are, of course, most welcome to attend **Parish Council Meetings held on the 2nd Tuesday of each month at the Methodist Hall at 7 p.m.**

Most of you will appreciate the importance of voting in the **local elections on 3rd May**. The article inside (**page 4**) explains the value of selecting a councillor to represent your views, but we can hardly expect our councillors to succeed in making the things happen that we want, if we don't spend a little time to make our views clear.

A great example of local people doing this in our community is the 'Don't Strangle Stroud' group. You can hardly have missed their energetic and effective campaign to breathe more life and logic into SDC's Core Strategy Plan. Together with Keep Eastington Rural, local people have prepared realistic and well-structured alternatives to the unimaginative and disappointing plan from professionals. In times of Parish crisis it is remarkable how people step forward to work together to make a difference. Such cooperation will likely need to continue for some time, until an alternative solution is found.

It is widely believed that SDC's current proposal would be the start of the biggest life-change for all of Eastington residents that has ever occurred. Life would totally change everywhere in this Parish if the current SDC Plan goes ahead. Although the proposal is only (!) for 1500 houses, developers agree that once started, it will soon grow to at least 3000 because of its closeness to the Motorway junction, and the large appetite for houses by Bristol and Gloucester commuters. By the middle of this century a town the size of Bradley Stoke could be centred here in Eastington, and although I shall not be here to endure that, it is not the sort of legacy that future generations should have to bear for want of thought through planning by our District Planners.

Andrew Niblett (Editor) 824841 (niblett.parish@talktalk.net)

Val Taylor (Articles Editor) (valtaylor@cressgreen.myzen.co.uk)

Tom Low (Distributor & Adverts) 823425 (tom@hazelcottage.eu)

Next Deadline: All articles by Friday 25th May please!

Next Delivery: Saturday 2nd - 9th June 2012 please!

View the "Community News" at: www.ecn.me.uk

No article of part thereof may be reproduced or published without prior permission of the Editor and author.
The views expressed in ECN are not necessarily those of the editors.

DISTRICT COUNCILLOR'S NEWSLETTER

CORE STRATEGY (HOUSES)

The latest consultation on this has now closed. I attended many meetings and presentations in a variety of locations during the consultation. There seemed to me to be a consistent response from the public at all of the locations, the main ones being:

- How on earth have we got to this totally wrong position?
- Why is the consultation period so short?
- A belief that the methodology and interpretation of the previous consultation and data was wrong
- That the proposals are not the way our district should be developing for the future
- Incredulity at the responses to questions/comments by residents of this and other parishes by both administration councillors and council officers
- That without admitting it, the people supporting the proposals will be changing the district for ever without the proper acceptance of that, and the necessary front end planning that such a monumental decision needs.

Despite all the fantastic work that has been done by the Don't Strangle Stroud, Keep Eastington Rural groups and the Parish Council on the process so far, the detailed analysis of both housing and population figures and the non identifying of very important factors from that data in the proposals, at the moment I personally have seen very little shifting of opinion by those who have brought these proposals forward. I think we will have to wait until after the May local elections to see what happens next. If the same people are in control then I would not be surprised to see things going forward based around the proposals.

My political group on the council thinks there is another way and that this can be achieved without the delays that some people would lead you to believe. These people are basically saying it is too late to change now, (if that is the case what's the point in having a consultation?) that if you do not agree you will get lots of housing by appeal, (you can get that now and could well do right up until any new plan is adopted). For those of us with the large allocations proposed it could be translated as: You must have a lot of houses without complaint so the good people elsewhere can keep their existing way of life, or choose how and where their communities will develop.

For those residents who attended the meeting in our Parish Church and heard the responses by those bringing the recommendations forward and their close supporters I thank you for your contributions on a very cold night. You saw first hand the world in which I have to operate as your councillor. I did not hear anybody saying complimentary things about it, quite the opposite. I will continue to oppose these proposals that I consider utterly bad planning, wrong in human terms and a completely unnecessary destruction of our village/hamlet way of life.

BUDGET

Stroud District Council has not increased its council tax for this year. Whilst supporting no increase I am not in favour of the general budget allocations. One of the consistent themes from the administration over the last few years was that they repeatedly complained that the last government did not allocate enough money to the District Council. Now, however, they make very little about a cut in government funding that they describe as the worst any local authority has had to take. There were also a lot of comments during the debate that I translated to mean that even though the cuts to date have been large, those proposed for the next few years could well be worse.

I have also attended a presentation on the proposed changes to the benefit system. The emerging small print on benefit changes looks to me that the worst off and those in unfortunate circumstances amongst us will be between a really big rock and a hard place.

Ken Stephens March 2012

FROM COUNTY COUNCILLOR - TONY BLACKBURN

A BUSY SPRING FOR EASTINGTON

There are a number of things which I have to report as your County Councillor:

1. First, under my “control”: Gloucestershire County Council’s share of your rates/Council tax demand for 2012/2013 has now been fixed. The figure is frozen, so no increase. Even though Government grants are cut from £137m to £125m we are able to put an additional £9m towards the old and vulnerable, to pump the local economy with £100 m of capital costs (improved roads and broadband), to provide apprenticeships and skills initiatives for young people and £1m to help first time buyers. No, there is not enough to pay for certain libraries and youth centres but it is a sensible budget and one with which I am proud to be associated.

2. Matters not under my control (but should be!) - Highways:

I have been pressing for a reduction in the speed limit along Alkerton Road/Claypits and Springhill to Chipman’s Platt to 30mph, for crossings at the latter and at Orchard Leigh on the Bath Road and for road repairs in many parts of the village. Highways plead no money (although GCC got an additional £3.6 m for roads repairs in December- where is our share of it?) or “safety considerations”. What about our safety! I will keep at them. It is scandalous that with a policy of caring for the old and vulnerable we can not provide a crossing on the dangerous Bath road for this worthy local care home.

3. Very definitely NOT under my control: the threat to Eastington Nupend Nastend and Standish from the Stroud District Council “Housing Strategy”. It is quite wrong to want to build 1500 houses in a “dormitory town “where the old will have car access only to our productive farm and amenity land.

The “Don’t Strangle Stroud” group have my 100% support. The Conservatives on Stroud council whose financial and waste (recycling) policies I support have chosen the wrong preferred option for housing.

Where should it go? Well first I don’t believe 3200 new houses are necessary - check out the figure. And second, there is plenty of room in the “brownfield “Stroud valley where there are already infrastructure and old buildings to be regenerated as homes/studios in the work/life mix which 21st century IT promises us in the future.

Stroud’s “consultation “ends on 19th March but everyone should continue to support “Don’t Strangle Stroud” and make the Conservatives and Greens (who don’t share DSS and my vision for the Stroud valley) face up to the folly of their views. This combined threat of the planners and the unenlightened is highly dangerous to our community and must be removed “*Ecrasez L’infame*” as Voltaire said about the *scelerotic ancien* regime in France – Destroy the Evil. It is up to us.

Meanwhile let us try and enjoy Spring in the Eastington countryside before they concrete it over.

Best wishes to all, from County Councillor Tony Blackburn

Speeding through Eastington

Results from our parish plan survey show a high level of concern about speeding traffic in Eastington. This is a particular worry for the residents of Orchard Leigh who regularly cross Bath Road to reach their smallholding - County Councillor Blackburn is lobbying strongly for a road crossing at that point (see above, paragraph 2).

To help us strengthen our case for measures to reduce the speed through the village, we would be very grateful if you could let the parish council know about any incidents or 'near misses'.

Please email the Clerk mgribble@btinternet.com or phone her on 825279 should you be involved in, or aware of, any such incident.

Why is it important that everyone votes in local elections?

Did you know that your local councillors are consulted on nearly everything that happens in your area? They take an active part in influencing what services are and are not provided - and that affects you and your family!

Parish and Town Councils are responsible for many things like: bus shelters, litter bins, local halls and community centres, parks, public clocks and footpaths to name but a few. They are also consulted on planning applications, highway improvements, street signs, grant funding and projects that affect where you live and what facilities your community has or receives.

Local councils are delivering more services for residents than ever and with changes proposed by the new coalition government, Parish and Town Councils will be in a position to do even more in the future.

Everything we come into contact with on a daily basis affects how we feel and what we do - so how much effort do you actually make to get your opinions known? Voting in local parish and town council elections takes so little time, but will have a daily impact on you for the next four years, because councillors remain in office for a four year term and their decisions affect the future for your whole community. If you leave voting to others your opinions and wishes will not be heard. Simply by voting for a candidate you feel will reflect your view sends a clear message of your opinion to the decision makers.

It is said 'people get the local council they deserve'. Do you know who in your community is standing for election and what they hope to achieve? The names of your councillors should be on your parish notice boards, in local post offices or displayed around your community. If you cannot find this information locally your District/Unitary Council may be able to advise you.

Councillors live side by side with you in your community; they are the most local level of government, being easily contacted and directly answerable to the community every time they walk out of their front doors. They raise money primarily through your council tax to administer their decisions and you need to be sure that you have voted for the right people to look after your community.

If you do not vote, others will and their views may change your life.

Have a Voice - vote in the local elections on 3 May 2012



No Fly-Tipping, please

In an effort to combat the ongoing issues around fly tipping Public Spaces at Stroud District Council arranged for some 'no fly tipping' signs to be put up throughout the district. The signs were put up in regular 'fly tipping' spots. The council receive on average 70 reports of fly tipping a month throughout the entire district.

Through joint working with community safety and Parish Councils Stroud District Council will always endeavour to investigate cases of fly tipping and prosecute the perpetrators where possible relying on these departments for reporting.

Public Space also use Leyhill TTG (Through the Gate) workers regularly for litter picking in the district. Recently all Parish Councils were contacted asking them to identify areas which SDC are responsible for which could benefit from such work. This has proved a very successful operation and Public Spaces hope to continue.

Grove Lane, Eastington is one particular area which has benefitted from some of this work. Public spaces team and your local Neighbourhood Warden at Stroud District Council have now installed some new signs (see attached photo), along with the work above to help improve the area. Help has also been sought from keen local volunteers who've also gone out and litter picked the area. If anyone else is keen to assist with litter picks in their area, Stroud District Council can provide the necessary equipment, please just contact Public Spaces team on 01453 766321 or your local neighbourhood warden 01453 754512 or 07876 405 833.

Home security

Summer is coming & everyone is looking forward to the holidays. And however much we like our homes, there is nothing like a change of scenery.

But we want to come home and find everything as we left it. Almost half of all burglaries happen when a house or flat is empty.

- Try not to leave valuable items, like your TV, stereo, video or DVD, where thieves can see them
- Mark your belongings visibly and permanently with your postcode and house number
- Put all your tools away so they cannot be used to break into your house and lock your garage and shed with proper security locks. If you have to leave a ladder out, put it on its side and lock it to a secure fixture with a 'close shackle' padlock or heavy-duty chain
- Make your home look like someone is living in it. Don't close curtains - in daytime this shows the house is empty
- Use automatic timer-switches to turn your lights on when it goes dark
- If you normally leave valuable pedal cycles or similar items in your shed, consider putting them in the house
- Finally, make sure that you've locked all outside doors and windows and, if you have a burglar alarm, make sure it is set

It's a good idea to get help from your neighbours. You could ask them to collect post, open and close curtains, and so on. They could even occasionally park their car on your driveway. Anything to make the place look lived in. Just before you set off, it's worth spending a couple of minutes checking that you've done all you had to do and taken everything you need with you. Don't forget your passport and tickets!

If you are not going away now that the nights are lighter and the warmer weather is coming please ensure that

- If your window is open it has a locking system so it only opens enough to let the breeze in and nothing else.
- Make sure your front door is locked if you are out in the back garden
- Don't leave bicycles unlocked outside
- Make sure your shed or garage is also locked.

If anyone would like a member of the team to come and give advice on home security one of us would be happy to come along.

If any one has anything to report or needs advice please contact us on the non emergency number 101

Liz Ward PCSO

Recycling Calendars

In previous years, residents have received their annual recycling calendars during March and April. Due to forthcoming changes, the next calendar that residents receive will be for an enhanced recycling service. We are planning for them to be delivered with the containers from the middle of May onwards.

Until July, recycling collections will continue as normal with no changes to collection dates.

We fully appreciate that in the absence of a calendar some residents may wish to clarify their collection dates. Listed below are several ways to do this, the first two being preferable as the Customer Service Centre will be starting to field calls on the enhanced recycling service.

- Visit the council's web page and click on "Where I live". This section contains information on the next recycling date.
- Talk to neighbours
- Contact the Customer Service Centre on (01453) 754424

Hold a Fish and Chip Supper to help spinal cord injured people live full and independent lives.



Great British Fish and Chip Supper – Friday 18th May 2012

Want to do something different? Want to raise money where you live or work? Want to eat Fish and Chips, while raising money for charity? Hold a fish and chip supper on Friday 18th May 2012 whilst raising awareness of spinal cord injury and supporting SIA's information and support services.

You can hold a fish and chip supper in your own home, at work or hold a larger supper at your local community centre. SIA will provide a fundraising pack containing hints and tips, recipes, invitations and donation envelopes. By inviting 7 friends and asking them to donate an additional £5.00 means you will raise at least £35.00 from your supper but we will give you additional fundraising ideas to raise even more money for the Spinal Injuries Association.

Last year we had over 100 suppers taking part in England and Wales and we raised £6,000. In the three years we have been running the event we have raised £20,000 to support spinal cord injured people. The money raised from the suppers will help SIA offer support to individuals who become paralysed and their families, from the moment a spinal injury occurs, and for the rest of their lives by providing services and publications which enable and encourage paralysed people to lead independent lives.

Every year in the UK over 1,000 people experience a spinal cord injury and there are an estimated 40,000 spinal cord injured people in the UK alone.

Community Fundraising Officer, Elizabeth Wright, says, "The Fish and Chip Supper is a wonderful opportunity for a great evening with friends and family. We are also encouraging people who work to hold a Fish and Chip Lunch in their work places to raise even more funds. You may be even a local community group wanting to run a fun evening with your group.

Be a part of something special and make a real difference to help spinal cord injured people gain access to the information and support they need to enable them to live full and independent lives."

For more information or request a fundraising pack call Elizabeth Wright on 0845 071 4350 or email fishandchips@spinal.co.uk or visit www.spinal.co.uk/fishandchips



Great British Fish and Chip Supper
Hold a fish and chip supper on Friday 18th May in your own home, local community or at work.
For full details and a fundraising pack go to our website www.spinal.co.uk/fishandchips



Olympic Torch Relay 23 May 2012

On Wednesday 23 May the Olympic Torch will come into the Stroud District from Cirencester along the A419. It will then enter the town of Stroud at around 4.15pm and be carried through the town centre to Beeches Green; it will then make its journey towards Painswick to arrive at 5pm.

Please visit www.stroud.gov.uk/london2012 for more information about the route through Stroud. You can also find information on events and celebrations on <http://bit.ly/GDrrWe>

Eastington Youth Group

We have had some exciting news! – We have been donated some units that, put together, will form a POD. This will be used as a base for the Eastington children to meet and do activities and most importantly a place to call their own. Hopefully by the next issue we will have plans for the POD underway and be in a better position to give you further information.

Our idea for the POD is to encourage all the children of the village to get together, we will have evenings for different ages group from small children to teens. The children will be involved in the décor and design of the PODS and have input on what they would like them to be used for. Experienced youth workers will be supporting us with this.

To reach our goals we will need to continue with our fundraising events and would really appreciate support and ideas – **watch this space!**

By the time this issue of ECN is printed we would have completed our first litter pick of the year, these will be a monthly event happening on the last Saturday of each month – 11.00 a.m. meet by the CO-OP. Litter picks, bags and hi-viz jackets will be supplied. We actually have good fun and finish with some light refreshments. **Next litter pick: 28th April – 11.00 a.m.**

The youth bus is still visiting the village every Tuesday. During the winter months the youth workers have been taking the kids to a facility in Stroud where they play games, do cooking and other fun activities. If anyone is interesting in attending this please contact Tina on the number below.

Other events we will be organising are:-

Community trip to Weston
Regular community dog walks/walks
Cinema night

Pizza night
Sponsored events
Fundraising events

When the clocks change we will also be having weekly games evenings, where we play rounders, tug o war, volleyball etc.

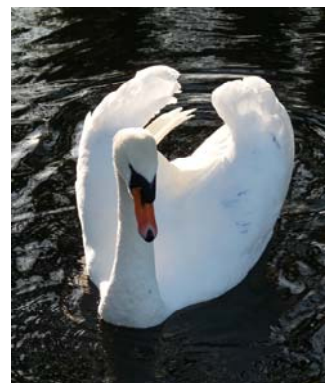
Posters of events will be on the Parish Council Notice Board and displayed in the shop and post office. See you at the next event!....

Tina Smith, Secretary of Eastington Youth Group, Tel: 07891 579754

WILDLIFE HABITAT SURVEY OF THE PARISH Date for your Diary.

I have arranged a training day for volunteers for the afternoon of **SATURDAY 14th APRIL** at the **BADGER INN AT 1.30**. We will start off in doors to learn about the surveying techniques. Basically it involves marking habitats, land use and important features on a map, in line with a detailed key. This is then colour coded to provide a visual impression of land use and habitat distribution. The information can be digitised so that it is available for many uses. It can also be compared with the results of a similar survey carried out across Gloucestershire in the early 1970s so that we can see what changes have occurred. After the indoor session we will go out into the field to put it into practice. After that volunteers will be allocated a local patch to survey and provided with maps and all the necessary information.

If you would like to join in the survey please contact me and I will send details of the training day.
colin.studholme@gloucestershirowildlifetrust.co.uk



The Eastington Allotments Society

Spring has sprung!! (I guess I could have been more original there) and a very busy time for all you “grow your own” enthusiasts. It is not only vegetables, though, that have started to grow now that the warmer weather and longer days have arrived. The allotments themselves have also grown. A new row of allotment plots have recently appeared alongside the green shoots on the more established plots. These will provide an opportunity for between 3 and 6 (depending on the size of plot individuals require) new plot holders wanting to embark on a healthy and productive hobby.....which leads nicely into.....
.....if you are fairly new to growing your own, and whether you are looking to take on an allotment or just planning to utilise some space in your garden, you may be interested to know that an organisation called Down to Earth, is being sponsored by Gloucestershire County Council to run a course called “Introduction to growing your own food”, date and time to be confirmed. So, if you are interested in learning the basics then please get in-touch with the allotment contacts below.

At the time of writing TEAS is also awaiting news of another new addition, a communal, poly tunnel of gargantuan proportions (well pretty big anyway). It will provide a place for allotmenters to gather, chat, and swap experiences, seedlings and produce and much, much more. Hopefully by the time this goes out we will know if planning permission has been granted but, be warned, if things go according to plan TEAS will be looking for volunteers to help erect the beast.

The addition of new plots and the filling of recently vacated plots mean that the waiting list is at an all time low so now is a good time to get your name down. You never know, if you are quick, you might just get on to a plot in time to start digging in for a good crop of veg. this year. If you are interested please **visit the Allotments page on the Eastington Parish Council web site, or phone Muriel Bullock on 01453 826172, or Sarah Underdown on 01453 823285**



The 23rd Eastington Spring Flower Show

sponsored By: **Dale Haines - Borders , Lawns, Trees ,
Garden Maintenance Tel: 07733 454 846**

Saturday 17th March saw the 23rd Spring Flower Show being held at the Village – mind you, you could have been forgiven for not knowing this as the sign advertising the show was a little on the small side!

Despite the weather forecast for the day, the sun shone until the late afternoon which was a pleasant surprise. Sadly though, the amount of entries for the show was down this year which was disappointing to those who had arranged the event.

Those that did enter and attend the day were able to see Mrs Q Jones take home many of the trophies for a variety of classes. The trophy for the most points in the children’s classes was won by Kate Underdown who had clearly been busy decorating Easter biscuits, colouring a Mickey Mouse drawing and arranging flowers. It was pleasing to see entries in two of the new categories that had been added especially with the allotment holders in mind.

As a first for the Flower Show, the event was sponsored by Dale Haines (Borders, Lawns, Trees and Garden Maintenance). It is the intention of the committee to have a sponsor for the Autumn show, so if you own a local business, or know someone that does who would like to use this opportunity to promote their business, whilst supporting a village group then please get in touch with **Sarah Underdown Tel:01453 823285** for more details.

ECO PATHWAY for CHURCHEND ORCHARD

With the dryer and warmer weather members of the ECO Group have been putting in the hours to complete the orchard (well 90% complete) by midsummer this year. The materials for the pathway have been paid for by a £500 grant from The Co-operative.

Work Party 19 – there has been that much work done in the past year – did the big work on the pathway.

Alan Loveridge generously did the difficult bit by digging exactly 100mm deep, backwards, for 78 metres. Oh yes, in a curving line as well.

Our photo shows the precision required and also the range of transport need to take the sods and soil across the orchard.



The work party then had to lay membrane to suppress the weeds.

The gravel boards were held in place by 175 pegs, hammered and screwed down.

A supplementary team has made a start on filling the pathway with wood chippings for a truly rustic finish.



What else is Happening?

Ten members will have been on tree grafting courses in March, learning the old skills. With this knowledge, we should be able to graft enough trees for our next orchard, at about one third of the cost of buying trees from a nursery.

Work Party 20 will be finishing the path and erecting the street entrance.

Thereafter the whole orchard will have a tidy up after the winter, weeding, pruning and mowing. After that, there will be planting out of a few more beds, for redcurrants, strawberries and gooseberries.

Why not come along and join us for a healthy morning outdoors? Membership is free to residents.

Contact us via <http://www.eastingtonorchards.org.uk/> or ring Kevin Dalby, Orchard Warden on 827401

Members please note – AGM Wednesday 16th May, OHMG 8 pm with Guest Speaker

From our Village Agent

Memory Dementia and Alzheimer's

This month I thought I'd talk about memory. Let me reassure you that memory problems are common. We all notice that our memory becomes less reliable as we get older. Tiredness, stress, overwork, anxiety, depression, some physical illness or the side effects of certain medications can all be factors. Maybe, sometimes, you just can't put a name to a face or you can't remember where you left your keys. Most of the time such lapses are a nuisance, rather than a sign of something more serious, but if you are worried that your memory – or that of someone you know is getting noticeably worse, or if memory loss is beginning to affect your every day life, it is worth sharing your worries and seeking advice as it could be an early sign of dementia so have a chat with your GP.

Whether a diagnosis comes as a shock or confirms your suspicions there are extremely good support services that are available through the Alzheimer's Society and that are local to you. Many people who have dementia of any type are supported at home by relatives, friends or neighbours. Supporting people with dementia can be a worrying and exhausting experience. Stroud Alzheimer's is there to help by offering, as flexible as possible, a home based support service.*

In addition, the local branch offers monthly activities.

- 1) Monthly Alzheimer's Cafes held in Nailsworth (last Wednesday of the month from 2-4pm at the Christchurch Rooms, next to the Church in Newmarket Road)) and Minchinhampton (2nd Thursday of the month from 7-9pm at Horsfall House). Both venues have speakers, refreshments, music and support.
- 2) Singing for the Brain at Stonehouse Community Centre – twice monthly: This is a get together to meet, talk and sing with a qualified tutor leading the group. No musical experience is necessary! For dates, please ring below.
- 3) Monthly Carer's Group held at Stonehouse Community Centre. This is to give carers an opportunity to gain support and time for themselves, whilst the person they care for takes part in organised social activities. Again for dates, please ring below.
- 4) Monthly meeting on the second Monday of the month there is a Memory Café at Cam Memorial Hall 10.30 – 12.30. **For more information please telephone 01452 525222.**

The number to ring for advice and information is Stroud Alzheimer's on: **01453 791830.**

* Information taken from the local Alzheimer's Society.

Sue Colquhoun Village Agent 07810 630 145



DO YOU PLAY or HAVE YOU PLAYED CRICKET?

Eastington Cricket Club requires players of ANY standard for the 2012 season, with most Saturdays (league) and friendlies on Sundays, midweek days and midweek evenings. We play and practise at OHMG.

Any standard/ability is welcome, to keep our club going.

Please contact Steve Gallagher on 01453 791209

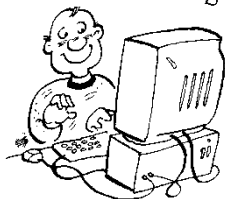
ST. MICHAEL AND ALL ANGELS' CHURCH, EASTINGTON

One of the 'Cotswold Edge' Parishes

(Eastington, Frocester, Haresfield, Moreton Valence, Standish and Whitminster)

Our mission is: to show God's love for His people, and nurture His people's love for God

THE RECTOR WRITES



Dear Friends,

Easter is a time for great rejoicing! Although the month of April sees the church in a form of mourning to start with. We trace Jesus moving from the high of his triumphant entry into Jerusalem on Palm Sunday, then move during Holy Week and the gradual realisation of the terrible events to come on Good Friday, via the bittersweet institution of the sacrament of Holy Communion on Maundy Thursday.

We hold an Agape Communion in Standish Village Hall on Holy Wednesday at 7.30pm – very appropriate as it is in an 'upper room' as the first Holy Communion was all those years ago – during which we share a meal, as did Jesus with his disciples. We share in bread and wine, and also Shepherd's Pie – so you'll need to let me know if you would like to come so I know how much to make! On Maundy Thursday we have a special service at Eastington in the evening, followed by a prayer vigil in the Lady Chapel, quietly praying as Jesus and his disciples did in the Garden of Gethsemane. You can come along at any time up until midnight when the church is closed.

On Good Friday morning we use the bread and wine prepared the day before at a Communion service at Haresfield, then in the afternoon we meet at Whitminster to observe the last hour that Jesus was on the cross in a service of reflective readings and passiontide hymns.

Unlike the disciples, we have the advantage of knowing what happens next, so Saturday is a day of preparation in our churches for the excitement of the Day of Resurrection – Easter Day! We start the day with an early celebration at Frocester at 8am, then all the other churches later in the morning except Moreton Valence, where we conclude the day's celebrations with an Easter Carol Service at 6pm. All the times for services in April and May at Eastington are listed below.

We hope to carry forward the celebratory atmosphere to the end of the month, where on the 29th we are holding our benefice service at Eastington, and are inviting all those who have been baptised in recent years to come with their families. Easter should not just be a one-off event, but should enable us to feel joy in our hearts every day. One way Christians respond to this is through the act of Confirmation – a public declaration of our faith, and the affirmation of our baptismal promises, often made on our behalf by our parents and godparents. I hope to be able to take those interested through a course exploring the Christian faith with a view to being confirmed in Tewkesbury Abbey in November, and provide details at the service at the end of April. Happy Easter everyone!



...rumours that we would be giving out easter eggs are unfounded - er, there aren't any left!

Yours in Christ,

Rector: Revd Richard Amys, The Rectory, Millend Lane, Eastington, GL10 3SG.

Email: richardjramys@aol.com. Tel/fax 01453 822437.

Day off – Saturday. (Mobile 07796 956050)

Services in April and May

Sundays→ <i>Service → Readings</i>	<u>1st April</u> <u>Palm Sunday</u> (p477 - red) <i>Philippians 2.5-11 & Mark 11.1-11 (p480/77)</i>	<u>Holy Week</u>	<u>8th April</u> <u>Easter Day</u> (p533 - white) <i>Acts 10.34-43 & Mark 16.1-8 (p535/7)</i>	<u>15th April</u> <u>2nd of Easter</u> (p538 - white) <i>Isaiah 26.1-9, 19 & Luke 24.1-12</i>	<u>22nd April</u> <u>3rd of Easter</u> (p541 - white) <i>Acts 3.12-19 & Luke 24.36b-48 (p542/2)</i>	<u>29th April</u> <u>4th of Easter</u> (p543 - white) <i>Acts 4.5-12 & John 10.11-18 (p544/5)</i>
	10.45am Holy Communion (Angela Reeder) Wed 4 th 7.30am BCP Communion	Maundy Thursday 5 th - 7.30pm Holy Communion & Vigil to midnight (p498 - white) <i>1 Corinthians 11.23-26 & John 13.1-17, 31b-35 (p500)</i>	10.45am Holy Communion Wed 11 th 7.30am BCP Communion	6pm Sung Evensong Wed 18 th 7.30am BCP Communion	10.45am Holy Communion Wed 25 th 7.30am BCP Communion	10.30am Benefice Family Communion Wed 2 nd 7.30am BCP Communion

Sundays→ <i>Service → Readings</i>	<u>6th May</u> <u>5th of Easter</u> (p546 - white) <i>Acts 8.26-40 & John 15.1-8 (p546/8)</i>	<u>13th May</u> <u>6th of Easter</u> <u>(Rogation Sunday)</u> (p549 - white) <i>Acts 10.44-48 & John 15.9-17 (p549/51)</i>	<u>20th May</u> <u>7th of Easter</u> <u>(Sunday after Ascension Day)</u> (p557 - white) <i>Acts 1.1-11 & Luke 24.44-53 (p555)</i>	<u>27th May</u> <u>Pentecost</u> (p559 - red) <i>Acts 2.1-21 & John 15.26-27, 16.4b-15 (p563/4)</i>
	10.45am Holy Communion Wed 9 th 7.30am BCP Communion	10.45am Holy Communion Wed 16 th 7.30am BCP Communion	6pm Sung Evensong Wed 23 rd 7.30am BCP Communion	10.45am Holy Communion Wed 30 th 7.30am BCP Communion

Books to Borrow or Buy



There is a library at the back of Eastington Church from which books can be borrowed or bought. The Church is normally open during the day, and donations can be put in the little wall box next to the main door. Please come in and have a browse!

The Queen's Diamond Jubilee

Churches are being encouraged to hold a lunch on Sunday 3rd June, and everyone is invited to bring a picnic down to the Church at 12.30pm on that Sunday. We'll provide tea, coffee and squash, you provide your own food and something to sit on outside in the Churchyard. If wet we'll eat in the Church. Please come down to the Church and start the festivities off by sharing a picnic together!



Summer Fun Day

at

William Morris House

Eastington, Stonehouse GL10 3SH 01453 824025

Saturday 19th May 2012, 1pm - 4pm **FREE ADMISSION**

Craft Demonstrations and Stalls **GRAND PRIZE DRAW** **Produce and Plants**
Books and Bric a Brac **Tombola, games etc**
Barbecue - Afternoon Tea - Ice creams

Come along and join us - Lots of Fun for Everyone!

Eastington School Parents Association and Friends

Summer Event - Sunday 24 JUNE 2012

Duck Race with a difference - fun, food and refreshments are guaranteed but how will we spice it up for Olympic year? An event for all.

We hold three Raffles a year (Christmas, Easter and Summer Event) and would love to find a business or two who might be able to sponsor our raffle ticket printing and have their business advertised as a result on all of the tickets sold for that event. If you are interested please contact Karen on 01453 821260.

Please recycle your unwanted goods for the good of our school books - Eastington Primary School Parents Association and Friends invite you to recycle the following unwanted goods. We will be paid £500 pounds per tonne (50p per kg) for the weight in goods which will be put towards a new reading scheme of books throughout the school:

Adults' and children's clothes, shoes (tied together please), hats, belts, bags, soft toys, curtains, bedding (not duvets or pillows). No bric-a-brac thanks.

If you are able to route through your wardrobes or loft for things you have not used for years please either bring it down to school, ask a school family to take it for you or contact me, **Karen on 01453 821260** to arrange for collection.

Any bag can be used and should be delivered to school by 9am on (but not before) Tuesday 27th March 2012. It will then be collected by bag2school.com.

Many thanks for your help in our fundraising

Parents Association and Friends

Eastington Brownies

Well, where do we start....?

Firstly, a huge welcome to Holly Plummer who has joined the Eastington Brownies team. Holly has recently moved to the area and brings plenty of ideas and experience to the group having run a successful Brownie pack for a number of years.

The Brownies have ensured they'll be no shortage of housing for the community birds this year (the feathered variety that is!) A fabulous evening was enjoyed by all when the Brownies made their own 'designer' bird boxes. From screwing and gluing to roof felting and artwork. Can't wait to see them in and around the community. With special thanks to Tom Low and the Dads who gave up a Saturday morning and Monday night to help make up the flat-packed bird houses.

Brownies have eaten haggis and danced on Burns Night (thank you to Miss Greening), created some super lavender hearts and flipped a lot of pancakes! We had some wonderful concoctions to fill our pancakes. Most of which clearly visible on the Brownies faces!!!!

The next few terms will involve lots of events celebrating the Diamond Jubilee and the London 2012 Olympics.....on your marks!

Sound fun to you? Why not join us? Brownies meet every Monday evening 6 - 7.15pm (term time only) at Eastington Village Hall. All Brownie girls are age 7-10 years. If any parents/grandparents of Brownies are interested in seeing what goes on why not join in for an evening (or two?)

If you would like more information please contact Vanessa Cousins 01453 828557

Eastington and Stonehouse Slimming World

Another spring is arriving. Yippee!!!! It's my favourite time of year. The clocks have moved forward so more evening light, the dawn chorus is getting louder and the first specks of beautiful spring green have appeared in our hedgerows. But stop and pause for a moment and think about how you are feeling with the hope of summer ahead. Will you feel confident walking out in your summer clothes - Do they still fit? Would you like to feel healthier and slimmer by the time we are shedding those winter coats and jumpers? Maybe now is the right time for you to come along and discover what Slimming World can offer you, that possible life changing moment when you first walk into one of my meetings and realise that you can lose weight with the help and support of the Slimming World group.

I have some lovely news to share with you: our first Slimming World baby arrived safe and well on Monday night - a lovely healthy baby boy. His Mummy joined Slimming World to lose weight before becoming pregnant and did amazingly well. She got to her target weight successfully and then a few weeks later whispered to me at the end of the meeting that she was expecting a baby due in March. I was so excited for her and her family - well that was 9 months ago. She kept coming each week and with a special form used by her mid wife and me stayed within the pregnancy target range throughout her whole pregnancy - stayed healthy and happy and was a huge inspiration to those around her. So I guess you're all wondering how much did her newborn weigh. 8lb 5oz. So massive congratulations - the group and I can't wait to meet him.

Our couple of the year winners were Brian and Lynn- well done both of you.

So if you would like to know more come along to one of my groups to find out all about us. At Eastington we meet at 7pm in the village hall and at Stonehouse we meet at 9.30am at St Josephs Church Hall, Oldends Lane.

Look forward to welcoming you.

Best wishes, Lorna Tel: 01453 821751

Eastington Bluebell Club -

Coffee Morning

10.30 am Saturday 12th May at

Eastington Village Hall.

Tombola, Raffle, Cakes, Groceries

All welcome

For further details about the Bluebell Club, please contact Anne Shill, Tel: 01453 822061

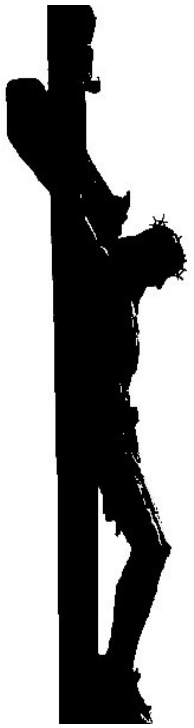
GAS SAFE NO. 214580

GASGARD **HEATING AND PLUMBING**

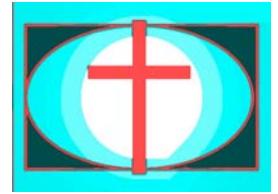
- Energy Efficient Heating Installations
- Boiler Replacement
- Plumbing Installation and Repairs
- Domestic Gas Appliances:- Service and Repair
- Solar Heating

Tel:- 01453 828820 Mobile:- 07891 751633

City And Guilds Qualified 10+ Years



Eastington Methodist Church



Easter, for Christians, encapsulates the most important series of events in the Christian calendar and is perhaps the most confusing for those that do not have a good understanding of it.

Jesus Christ was innocent, but declared guilty, was tortured brutally and then nailed to a cross to die a very painful death over a period of several hours. And all this happened on what is called "Good" Friday.

Then on Sunday morning, he rose from the dead and was seen by hundreds of people over a period of several weeks before returning to heaven. Now you may be sceptical about all this but very clever people have set out to disprove this only to end up convinced that the evidence leaves little doubt that it did actually happen - they have even written books about how they came to this conclusion.

In the Bible, John 3 verse 16 says: ***For God loved the world so much that he gave his one and only Son, so that everyone who believes in him will not perish but have eternal life.***

It's an important verse and one which can sometimes be seen on placards. The reason Good Friday is good rather than Appalling Friday or Gruesome Friday is that it marks the point when we, as in mankind, were provided with a way back to God and eternal life. This is the Good News of the Gospel and the reason we keep banging on about it is that we believe that it is critically important and of great value to everybody. But notice that there is a condition to the promise contained in John 3 vs 16. It says it is for those who "believe in him" and that is not the same as a vague notion or a casual ill informed superstition such as not walking under a ladder.

Are you confident that you are covered by the promise? If not, its time to find out more as it is difficult to believe something about which you may know very little. Everything is at stake - it is important.

What is happening at Eastington Methodist Church? Well the entire usual programme but please check the web pages for exceptions, additions and variations:

Sunday	11am:	Main Service with the Worship Music Group and Children's Club
	7pm:	Sunday Night Praise, usually 1st & 3rd Sundays of the month
Monday	10am:	Mothers & Toddlers
Tuesday	8:15am:	Prayer time
	10:30am:	Line dancing
	1pm:	Lunchtime Bible Study
	8pm:	Bible Study House Group (at The Pike Lock House)
Wednesday	6:15pm	Kidzone
Friday	8:30am:	Prayer Meeting
	7pm & 9pm:	Youth Club

Ken & Beck Burgin 01453 827414

www.EastingtonMethodists.org.uk



Afternoon Tea & Chat

3:00 – 4:30pm

Wednesday 6th May

@EMC – all welcome



Update from Eastington Toddler Group.

Eastington Toddler Group meets in the Methodist Church Hall, (opposite the butchers), term time Monday mornings, between 10 and 11:30am.

Each week we have various toys out, including big and little cars, the slide, a kitchen area, as well as toys suitable for younger children. We also regularly have some form of craft or cooking activity. This half term we've played with play dough, decorated biscuits, and will be making Easter biscuits. Alternate weeks there is a short Bible story, in which the children are involved. We finish each week with a time of action songs which are great fun. Last week this involved musical instruments, and the week before a game with parachute and footballs.

Each morning there is a snack, including fruit and a drink.

There is plenty of space for new mums and toddlers to join us, and you would be most welcome. The cost is £1.00 for children under 8 months, £1.50 for those above, and an extra 50p for each further child or adult. It would be great to see you, so why not come along and join in the fun?

For further information please contact **Beck Burgin 01453 827414 or 07855296175.**

A Brief History of... Eastington

Eastington may not be the most beautiful village but it has a long history, being first mentioned around 1085, according to A.E. Keys *History of Eastington*, although Alkerton, the central part of the Village, was then the more important place (then spelt Alcrytone).

In 1220 Eastington was mentioned as 'Eadstan's tun', meaning Eadstan's farm or settlement and since then seems to have taken over from Alkerton.

Parts of a Roman settlement have been discovered at Westend but this has never been fully explored.

The Duke of Buckingham, cousin to Henry VIII, owned property in Gloucestershire, and was a benefactor to the Parish Church. The church has a Norman font and a pre-reformation monumental brass.

The Manor House, now no longer in existence, was situated to the west of the church. It was the home of the Stephens family, one of whose members was a signatory to the death-sentence on King Charles I. For this act, it was said, the family was cursed, and has now died out.

Early in the 20th century people were mainly occupied in agriculture and the cloth trade but now they travel further afield to more diversified categories of employment.

One Rector, the Reverend Sidney Rimmer, in the late 19th century, became so unpopular that his effigy was burned as a protest. In more recent times, other personalities have been the Reverend G.T.A. Ward, Rector for over 30 years, a musician, scholar, engineer and printer; also Mr Charles Hooper, owner of Bonds Mill (cloth mill) together with members of the de Lisle bush family of Eastington Park.

Until about 20 years ago May Day was a great feature of village life, when the children would parade round the village performing country dancing in honour of their May Queen. Mr J.W. Rowbotham, the headmaster of the school for around 30 years, instituted this and it continued for some years after he left to take Holy Orders.

Since the Second World War the village has almost doubled in size. Many village organisations hold their meetings in the Village Hall, which was built on land given by the late James Warner and helped by donations from the de Lisle Bush family.

A Snapshot from our Village in Winters Past

Although hopefully this winter is now behind us, the following comes from the Eastington Parish Magazine of **January 1884**. It helps throw a bit of light on the way our predecessors lived and of how times in the village have since changed. During this month, George Hill and Elizabeth Wager married, as did James Warner and Eliza Watkins. William Barnfield (aged only 2) and Mary Ann Bailey (aged 73) died. The Temperance Association held a number of lectures, readings and musical events in the Wesleyan schoolroom and the Temperance Hall. Now read on....

The mild and open weather which has characterised the early part of the present winter, with the exception of a few keen frosts in November, has followed us through Christmas. Our young people, who have been longing to see a prospect of using their skates, have had to find other pleasures. Perhaps the ice which would not 'bear a duck before Christmas' may 'bear a goose after'!

Among the usual indications of the festive season, the earliest was, of course, the butcher's display. No choicer beef can be anywhere found than is produced in the pastures of our valley lands, and a capital show was provided, notably by our neighbour Mr John Warner, and mainly of his own feeding. Following, and on the close approach of Christmas day, came as usual the evening melodies of the carol singers, the band, and the hand-bell ringers.



Our parish band has really become thoroughly efficient, and their performances do them much credit. It strikes us too, that on the whole, our carol singing has been of a much better quality than usual - less of the irreverent style, and more of the well-sung appreciative music. It will be pleasant indeed, if, as years go on, this should become increasingly the case.



Eastington volunteer brass band assembled outside Eastington Park

The annual 'mill dinner' to the Sunday scholars working for Messrs. Hooper & Co, took place on Saturday Dec 22, and was as pleasant an occasion as it has been in so many preceding years.

Christmas day occurring this year on Tuesday, involved an unusually long holiday for the mill operatives, the works being closed from Saturday Dec 22, to Wednesday Dec 26. The usual religious services were held on Christmas morning, followed in the parish church by an administration of the Holy Communion.

The decorations of the church are marked by the same simplicity and good taste to which we have been accustomed, the windows, chancel- arch, and gallery bearing appropriate scripture quotations. About mid-day, the usual treat of a good dinner to the inmates of the Union Workhouse was provided by the liberality of the guardians and others, and was fully appreciated.

I wonder what Eastington winter will be like in another hundred years' time?!

Stephen Mills

Birder in the Parish

11/02/12: led a local bird-watching walk this morning, where somehow, the 'short walk' turned into five hours! Fantastic weather, which really helps! Started at Millend and headed up to Five Acre Grove via Cress Green (where had an addition to the Parish list – ten Red-legged Partridges) and return via Stanley Downton and back along the Frome south arm. Good birding, with a flock of twenty three Lapwings in meadows between the sewage works and Five Acre Grove; also had a Muntjac deer here and a very obliging Fox! Really good views of a female Sparrowhawk bathing in the river at French Gardens. The south arm gave very good, close views of a Dipper pair, a Grey Wagtail, and a Kingfisher also shot through – first one of the year for me. Also a Raven pair, two Teal and one Common Snipe – but gone are the days when twenty one Snipe could be flushed here.

15/02/12: Green Sandpiper flushed from the farm adjacent the allotments today.

17/02/12: a mega rare bird was put out late Thursday afternoon, at Rhiwderyn, just north of Newport, so did a bit of twitching today and got there before first light. This was a Common Yellowthroat, which could have come all the way from north west USA, and probably came in on a ship to Newport Docks. It had settled in some small paddock fields, next to a busy road and housing estate. Lot of birders there, and the bird was very difficult to watch for any length of time, as it was quite mobile and liked low brambles and hedge bottoms, but eventually we had excellent views as it settled down to feed in a corner of one of the fields, right next to the road! A very nice bird, being a first winter male.

22/02/12: news from a neighbour that a big dog Otter was seen eating a fish early a.m., just below Millend Mill. Two Nuthatches now regular visitors to the feeders.

Sat. 27/02/12: glorious day of calm, warm sunshine. Garden pond noisy with frogs, and at least two pairs, so, frog spawn imminent. Really hope we're not hit by another very cold spell, as ice will kill off the eggs.

Curlew flew high over Millend late morning, calling and heading east – still an uncommon sighting in the Parish. Up-dated the Parish bird list to an impressive 121!

The Jackdaw colony at Millend Mill is slowly but surely starting to thin out now, as birds fight over the breeding holes and unlucky others drift away to look elsewhere. The over-wintering flock this year was sixty plus birds, the largest I've seen, when it is usually in the forties. They're a cheerful addition to the wintering birds here, endlessly interesting and watchable, though I sometimes have to drive them off the bird feeders when they 'attack' in gangs, and nick the peanuts! One or two nest in the chimneys along the row.

The 'wild' ground next to the mill has been cleared, and although it's been 'tidied' up, a number of birds will now not breed here. Mallard, Collared Dove, Wood Pigeon, Missel Thrush, Song Thrush, Blackbird, Blackcap, Chiff Chaff, Dunnock, Long-tailed Tit and Goldcrest have all bred, and it remains to be seen how the new breeding season develops, but with the hedgerows in the east meadows still being hacked down, good habitat is slowly disappearing from the Parish. The mill development is bound to impact on the local wild-life, and the Jackdaws and Feral Pigeons which have always nested in the mill, will move out.

17/03/12: late afternoon, watched a Water Shrew in the deep ditch at Millend, my first ever record here of this cracking little mammal! Had another look the next morning, but no sign. Really hope it progressed up-stream to the river, the local cats are now out killing small mammals, as the weather improves. Chiff Chaffs and Blackbirds still singing, into their second week.

19/03/12: ten Buzzards overhead today, and two female Sparrowhawks flew through. The resident Buzzard got really agitated, calling continuously, and showing off with a display flight.

Eastington Playgroup

February/March 2012 – Newsletter

The children were busy during the half term with a sponsored texture and materials collection. Many unusual items were returned for the children to learn about, giving them an understanding of where they link in the world around them. Rubber inner tubes, leather belts and American dollar coins were included in the collection! To add to this they managed to raise over £70 which is going towards a trip to a local forest school where the children will be able to learn about the outside environment, possibly using potato peelers to whittle some branches and toast some marshmallows on the fire. We can't wait!!

We have been learning about primary colours and colour mixing, melting different coloured ice cubes together to find what colours they make. We have also been sorting by similarities, and matching quantity to numerals. In addition we are making duck masks and getting 'Charlie Bear' dressed in his duck costume ready to support the National Meningitis Trust in their toddle waddle at the end of April.

Our playgroup offers care and education for all children from 2 ½ years to 5 years in a well established community based group.

We offer your children a safe and stimulating environment in which they can grow and blossom into self confident, self reliant and positive little people.

Our ultimate goal is to enable the children to have fun, explore and have the freedom to express their individuality, while forming the basis of their education.

We currently have a few spaces left and operate 4 days a week offering full and half day sessions and we accept government nursery vouchers and other types of employer supported childcare vouchers.

If you would like more details please contact Mandy Owen, Play Leader
Tel: 07977 342 742 Email: eastingtonplaygroup@eygloucestershire.co.uk



Eastington Community Centre
www.ohmg.org.uk

Available for parties, regular bookings, sports events, clubs,
wedding receptions

NOW WITH FULLY RESURFACED CAR-PARK

Wednesdays:	<i>Just 'B' Aerobics and Fitness. 7.30-8.30pm.</i>	Tel. Bryony 07906 581450
Thursdays:	<i>Yoga. 8-9.30pm.</i>	Tel. Carol 07814 341092

Cricket: *Eastington Cricket Club usually play every fortnight during summer months.*
Tel: Ron 01453 822942

Football: *Regular Alkerton Rangers first and second matches throughout the football season.*
Tel: Martin 01453 828712

Eastington Community Centre is the home of Eastington Playgroup. Tel. 07977 342742

Contact Vanessa on 828557 for a friendly chat and more information

STROUD AND DISTRICT CITIZENS ADVICE BUREAU FUNDRAISER



Photo: Martin Gammon for New Business Magazine.

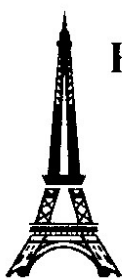
John Bird, MBE, founder and Editor-in-Chief of *THE BIG ISSUE*, the world's most successful social enterprise

**will be giving a talk on SATURDAY, 21 APRIL 2012
at MARLING SCHOOL MUSIC CENTRE, STROUD**

At 7.30pm (Doors open and drinks available from 7.00pm)
Tickets, £8, are available from Stroud Information Centre at the
Subscription Rooms. Or phone: Ann 01452 812128 or Judith 01453
762849 (Free parking on site)

John Bird has turned thousands of peoples' lives around worldwide by inspiring people to change their lives through self help and work. At a time when Corporate Social Responsibility is preoccupying business leaders and consumers alike, he offers an authoritative, fresh approach and some original perspectives on the interaction of business and society. His diverse experience, exuberant personality and often trenchant views make him a compelling and entertaining speaker.

Lingos Language Tuition



**French
Holiday Courses**

**GCSE revision
&
Oral Practice**

Beginners welcome
One to one or small groups
Danish and Spanish also available

07799 657975

lingos@fsmail.net
Eastington

www.**WESTEND**
OFFICE SUITES.co.uk

Local **QUALITY OFFICE SUITES**



Suites from 288-788sq ft

All offices include:

- Air conditioning
- Kitchenette and WC facilities
- Generous car parking
- Carpeting ■ Blinds

For viewings or for further information

Westend Courtyard, Westend, Nr Stonehouse, Gloucestershire GL103SL
Telephone: 07760 207194 **Email:** enquiries@westendofficesuites.co.uk

WWW.WESTENDOFFICESUITES.CO.UK