

Eastington Community News

October / November 2012

Nº. 135

After a memorable summer, locally and nationally, it feels that autumn has arrived quickly upon us. It seemed that the entire nation enjoyed the Queen's Diamond Jubilee celebrations in one form or another, and then the bar of positive mood was raised further while enthusiastically supporting the Olympics and Paralympics. Even the deluge and dismal, dull weather could not dampen the spirit of the nation.

In Eastington there has also been much to celebrate. Back at the beginning of August another highly successful Eastington Horse Show was held at Claypits. This long established and popular annual event generously gives financial support to many Village organisations. Please see the account of the events and tribute to the many helpers.

For the young people of this Parish, there was the fruitful fete on the Owen Harris Memorial Ground at the beginning of September. This coincided with the third birthday of the Eastington Community Centre, and the fete was organised by Eastington Youth Group (EYG) reported inside. Please consider contacting EYG to offer your help and talents.

Traffic issues continue to feature highly in our Parish. In the next edition, the Parish Council will review the most important issues. Many motorists are showing courtesy to pedestrians in narrow lanes by waiting for people to reach a safe place, rather than squeezing past. These days many motor vehicles have become so wide that they fill an entire country lane, and leave only stinging nettles, thorny brambles or a steep bank to climb to avoid the danger. Might we hope to convert the few remaining impatient drivers, to be won over in respecting the needs of pedestrians sharing such narrow lanes?

From our District Councillor, Ken Stephens, we have an update about the Local Plan, Council Housing and 'the Incinerator'. We are lucky to have Ken's commitment to fight against the proposed 'new town', and to support the realistic option of dispersing housing where it is most needed. We also include in this issue a summary of the campaign to persuade planning officers to listen to reasoned argument, by 'Don't Strangle Stroud' (DSS) Group. There is information about ways you can participate in influencing the planning decision makers. Everyone should be alert and on stand-by to defend the values of Eastington when the time comes.

Each November, while I have represented the Parish Council in laying a wreath on our war memorial, I have thought about the young men whose names were read out to us. What would their lives have been, had they not died defending the freedom that we now take for granted? Where and how did they make that ultimate sacrifice? In this edition, thanks to investigative work by Val Taylor, we can read a little bit more about those young men and boys. If you have feed-back or comments about her article, please let Val know.

We have articles from both Methodist and Anglican Churches inside. There are reminiscences of the 'good old days' from chats with old inhabitants, by Steve Mills. The myth that some of Eastington Allotment Society had grown rice this year is dispelled – their real produce is revealed. And there are few surprises in the winners of prizes at the Autumn Flower Show this year.

Andrew Niblett (Editor) 824841 (niblett.parish@talktalk.net)

Val Taylor (Articles Editor) (valtaylor@cressgreen.myzen.co.uk)

Tom Low (Distributor & Adverts) 823425 (tom@hazeltcottage.eu)

Next Deadline: All articles by Friday 23rd November please!

Next Delivery: Saturday 1st December 2012 please!

View the "Community News" at: www.ecn.me.uk

No article of part thereof may be reproduced or published without prior permission of the Editor and author.
The views expressed in ECN are not necessarily those of the editors.

DISTRICT COUNCILLORS NEWSLETTER

Local Plan/Core Strategy

Since last May's elections and the forming of a new administration at Ebley Mill work has been going on to look again at our housing number requirement. Included in this was the commissioning of an independent consultant to produce a report on the work done to that date and the effects of emerging data and legislation. An agenda item based on that report's findings was taken at the first meeting of the newly formed Planning Advisory Panel, the last executive meeting and will be the item to be discussed at a special meeting of council in October. Included in the report was a projection forward of the housing requirement from years 2026 to 2031. This is to bring it in line with new government requirements. The report suggests a bottom line figure of just over 9200 houses until 2031. Projected back this would give a figure of 7700ish at 2026. This is a reduction of approximately 1500 houses up to that date than previously decided. A sliding scale to a higher figure is also proposed to allow for any upward trends. If accepted this report would give us a 6.5 year land supply. This is above the key 5 year requirement that has been a problem for the district in recent times. Although going forward attached to the council report, the consultant report has been the subject of much scrutiny and challenge by the Eastington Parish based *Don't Strangle Stroud* Group. I think it is fair to say that this scrutiny and challenge will continue. I believe that some parts of the methodology used, interpretation of data and sources of data have yet to be clarified to the group's satisfaction. I believe the council report under discussion by councillors is intended to be a flexible, dynamic document that will be reviewed regularly and constructed so that it can adapt and embrace any relevant data quickly and without delaying the Local Plan process. I personally think the proposed sliding scale should include a downward element. If the new proposals are adopted by council in October I expect a review of the way the housing requirement is delivered and the potential sites to be considered to start. My group and I remain committed to dispersal. I continue to try and ensure that I am involved with all aspects of the Local Plan process.

Council Housing

With the decision of the council to fully purchase its housing stock from the government possible new initiatives can be considered. Besides redeveloping existing housing sites, the building of council houses on new sites has become an achievable target. The continuing 'fluidity' in the way the Localism Bill will be implemented affects housing as well as planning and is having an affect on service delivery. The reduction in funding being proposed to the Supporting People Programme by the government means that sheltered housing will see yet another review. I believe that these tenants have not had the smooth environment they deserve over the last few years and have my sympathy for this latest review.

Incinerator

Discussions are taking place within the council on how best to challenge the County Council on its decision to make the planning decision on its own application. One way would be to request that the application is 'called in' by the Secretary of State for determination by one of its inspectors and SDC's administration is looking into how/whether this can be taken forward. If you want to find out more on this application and its possible effects on the locality I would suggest that a visit to www.youtube.com/watch?v=SoaN0OKmU and a viewing of the video well worth while. Alternatively you could visit the main Glos vain web site, www.glosvain.info

Work goes on in all aspects of the council's remit to ensure the best way of using the reducing monies available and exploiting any initiative that will improve the way of life for all in the Stroud District.

Ken Stephens September 2012

HOUSING REPORT NEITHER EXPERT NOR INDEPENDENT

So two months on, what has happened? The long awaited report from the "Independent expert" Keith Woodhead, turned out to be neither expert nor independent.

Stroud District Council (SDC) determined to appoint an external expert to respond to the Don't Strangle Stroud (DSS) challenge on the housing. Despite reassurances from Council Officers, the DSS evidence base was never given to the consultant. In reality the Planning Department whose figures we had challenged appointed a management consultant. They wrote the terms of reference and briefed him; to no

one's surprise he wrote a sixty one page report that supported the Planning Department's figures. He did recognise that the population projection figures prepared by the Office of National Statistics had fallen (DSS had alerted SDC to this back in March) and therefore SDC has now put in a range of houses required from between 9,350 to 11,350 in the planning period up to 2031. I am astonished to say that this amounts to one for each man, women and child projected in the population increase!!

Key to the consultant's report is the number of people expected to be living in a house in 2031. That number divided into the projected population for 2031 gives you the number of houses believed to be required.

SDC has chosen to use a projection prepared by the Department of Communities and Local Government (DCLG). These figures are

- **Consistently wrong when compared with census actuals,**
- **Specifically state they “are not an assessment of housing need, nor do they take account of future policies”,**
- **Are statistically invalid as they rely on a Labour Force Survey (LFS) sample size (70 to 110 for Stroud) that is not statistically significant,**
- **Bob Neil (Under secretary of State, DCLG) states in writing to us “Localism cuts both ways; councils can no longer hide behind regional quangos or central government”**
- **Hansard reports that: ‘The Department of Communities and Local Government does not undertake central assessment of the data used by local planning authorities to inform local decisions on identifying housing need’. (Written Parliamentary answer from DCLG, Citation HC Deb, 10 September 2012,c37w)**

Why should this matter? It matters because using the DCLG figures creates a much larger housing requirement for 2031 (9,350 to 11,350). If the reliable and up to date figures were used from the 2011 census the housing requirement for 2031 is projected at 7,785 (including, historically, around 50% of all additional house built that are occupied by people from outside the district). SDC Officers have stated that the detail of the census (Household Size) is not available. This is untrue. For those familiar with their computers go to our website (www.new-town.info) and there you can find a simple guide to the arithmetic required to determine the household size from the census. It will take just a few minutes to confirm what I am say is correct.

Then write to David Hagg CEO SDC(David.Hagg@stroud.gov.uk) or Executive Chair of the Planning Advisory Planning Panel, Councillor Dennis Andrewartha (cllr.dennis.andrewartha@stroud.gov.uk) and ask them :

“Why would SDC use unreliable, out of date projections from the DCLG (2010) when the census (July 2011) is readily available and both reliable (actual) and up to date.

Furthermore, if the reliable census information is used the housing requirement falls to 7,785 instead of 9,250 to 11,250 (SDC Figures).

So why would the SDC not wish to use it? By using the higher figures the electorate will lose out, but what does the council gain that makes them so determined to go for the higher, and unnecessary, number of houses”?

The threat to our community remains. I know we can rely on Ken Stevens to ensure that the council uses the Census information when it debates housing numbers on October 3rd and certainly not support the use of unreliable data just because it produces the answer that some individuals are determined to drive through.

Our website has new information; in particular are three significant letters to Dennis Andrewartha, Keith Woodhead (the consultant) and David Hagg CEO. You will see here the extent of our concerns.

Please stay vigilant, keep in touch, read the website, and above all ensure Ken has your support as he goes into battle for our community.

Daniel James, For Don't Strangle Stroud

From our MP, Neil Carmichael

Flooding

Many residents have been concerned about flooding and, with the 2007 floods still very much in focus, it is right that the agencies responsible for tidal, inland and surface water management are being robustly monitored by local people. Several aspects of flood risk are on the table. Obviously, the future of the Severn Estuary defences are subject to intense debate and I have already ensured that proper consultation of local residents and businesses takes place before any final decisions are made.

I would be interested to hear your views about the threat of flooding and the risks involved. The Stroud area has over 5000 houses within flood areas so we must be alert to the public policy issues behind strategies and apportionment of public money.

Neighbourhood Planning

I have been a strong proponent of local decision-making in planning. The Coalition Government has paved the way for active and involved local people to shape their environment. The key tool is the neighbourhood plan and I hope many will be drawn up during the next few years.

As a contribution to this process, I established a “Canal Forum” as a body to provoke and support debate about the development issues of the areas alongside the soon to be restored canal. The latest step has been to establish a Neighbourhood Planning mechanism to give local people a voice and, crucially, to be a catalyst for the generation of a vision for the canal’s future.

Broadband

As many of you already know, I have been campaigning for improved broadband provision across the District. To my mind, easy access to the internet means improved connectivity for elderly people, better prospects for business especially ‘work at home’ small businesses and increased utilisation of traditional buildings and village infrastructure.

Already, several parts of the District have benefitted from increased investment in broadband connections but, to achieve more comprehensive coverage, we need to demonstrate the demand for the services.

If you would like to discuss the issues raised above, please contact me on 01453 751572 or visit my website: www.neilcarmichael.co.uk.

Cancer charity comes to Gloucestershire

New ‘Living Well’ service launched locally

Penny Brohn Cancer Care has been supporting people living with the impact of cancer for over 30 years from their National Centre in Bristol.

This year marks a new beginning for the charity as it begins to offer its ‘Living Well’ course to cancer patients and their supporters in communities across England; with the first course in the south west being launched in Gloucestershire.

The ‘Living Well’ course offers peer support, self-help tools and enables those diagnosed with cancer and their supporters to explore which lifestyle choices are right for them.

‘Living Well’ attendees have the opportunity to:

- Find out about eating well to enhance their health
- Learn simple techniques to help them relax and manage their stress
- Discover which physical activities can benefit them

Penny Brohn Cancer Care are able to provide their services *free of charge*, thanks entirely to the charitable donations and voluntary contributions which fund their work.

The first 3 day ‘Living Well with the impact of cancer’ course will begin on Monday the 26th of November at the National Star College.

For more information please call the Penny Brohn Cancer Care helpline on 0845 123 23 10 or visit www.pennybrohncancercare.org



DISCOUNT DOUBLE GLAZING

Andy Stanton, Eastington



Windows, doors, conservatories,
Fascias, soffits and guttering

10 year guarantee; OAP's 10% discount

Also misted glass units, locks, handles replaced

Phone 07770 864053 or 01453 791678

for no-obligation quote or

E-mail discountwindows04@gmail.com

Foot Health Practitioner Howard Corlett MCFHP MAFHP

Professional & friendly routine foot care in the
comfort of your own home

Treatments include:

- Nail trimming and reduction
- Corn and callus removal
- Fungal infections
- Verrucas
- Vascular & neurological testing

Telephone: (01453) 823102

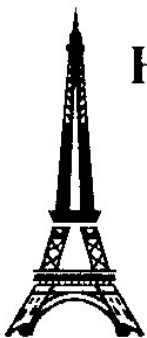
Mobile: 07708 451556

Email: howardcorlett@btinternet.com

CRB enhanced certificate held

Lingos ***Language Tuition***

French
Holiday Courses



GCSE revision
&
Oral Practice

Beginners welcome

One to one or small groups

Danish and Spanish also available

07799 657975

lingos@fsmail.net

Eastington

LYNDON HARRIS PLUMBING & HEATING ENGINEER

Installation of OIL and GAS boilers
Pressurised Cylinders
CENTRAL HEATING systems

BATHROOMS completely refurbished
Routine plumbing tasks

GAS SAFE registered, fully insured
20 YEARS trade experience

12 Victoria Drive, Eastington
01453 821559 / 07966 750137
lyndonharris@live.co.uk

Bogus callers

I would like to inform you that in the last few weeks in the Stonehouse area we have had a few incidents of bogus callers. Could I ask people to be aware and keep a look out for anyone knocking door to door, also keep a watchful eye on any of your elderly neighbours that may be at risk.

Many Bogus callers will work in pairs, one of them will try to keep you talking at the door whilst the other will go to the back door to try and enter the property. Another type of caller will come to the door selling things such as dusters and household goods and try to charge an extortionate amount of money for them.

What to do when someone calls

Look through your spy hole or window

Always look through the spy hole in your door, or your window, to see if you recognise the person at your door. If you are unsure and don't know who they are don't answer the door to them.

Put your door chain on

Before you answer the door put the chain on and keep it on whilst you check the person's ID card, if they are from a recognised company they will be happy to wait whilst you check their ID by phoning the company direct. If the caller does not have any ID tell them to go away and advise the Police that there are suspicious persons in the area.

Put your safety first

Bogus callers will sometimes knock on your door asking for help, maybe to use your phone or in need of a glass of water. Don't feel scared to say **NO** as your safety is important.

Remember this is your home; you do not have to open the door to anyone if you do not know them.

PCSO 9081 Liz Ward for the Stanleys & Eastington

Police Non emergency phone no. 101

E-mail

elizabeth.ward@gloucestershire.pnn.police.uk



Is there anyone in the Swallowcroft area who would like to be a Neighbourhood Watch Co-ordinator? If you are interested to help, please contact me:

e-mail at elizabeth.ward@gloucestershire.pnn.police.uk

Or via the 101 non emergency number and leave me a message.

Eastington Brownies

We are delighted to report that we have a thriving Brownie pack following the summer break. There has been a change of leadership and we also have two additions to the adult helpers. Laura and Jessica both started in September at Eastington and are already proving invaluable to the pack.

The girls have gone from strength to strength too. Unfortunately we had to say goodbye to 4 of our older girls in July but we have been delighted to welcome 4 younger girls to the pack. We currently have 20 Brownies attending each Monday with this number due to rise to 22 in October.

Before the summer holidays the Brownies enjoyed completing their Diamond Jubilee badge and working on their Olympic activities. We finished the term off with a great trip to Saul Junction where we were lucky enough to enjoy a trip on the Perseverance and a sneak peek at a privately owned narrow boat, to learn about life in the olden days.

This term we are working towards our Culture badge, looking at what is important to us and what makes English culture so unique. This includes quizzes, poetry, scavenger hunts and cooking.

We do currently have spaces on our waiting list so if your daughter is thinking about Brownies; please do contact us to register her interest as we continue to enjoy a very full pack.

Contact Snowy Owl on 07854 268528 or email eastingtonbrownies@gmail.com



Our topic for the last term of the summer was focused on 'The Very Hungry Caterpillar' story and we had some guest caterpillars at Playgroup that we looked after. The children were fascinated to watch their changes as they developed into beautiful butterflies. We drew the caterpillars in their different stages of life with us, noting how they grew, what their cocoons looked like, and then finally how they evolved and grew beautiful wings.



Whilst the sun was shining we made the most of every minute, enjoying the outside space playing ball games, racing games, using the play park and our bikes, scooters and physical equipment. We also used our new equipment from the Haven Fitness organisation that was fund-raised by our fantastic parents and we held a 'mini Olympics'.

In July we said goodbye and good luck to our older children who left us to go onto their next adventure at primary school – we wish them all well and hope that they have now settled into school routines following the sessions that we ran down at the school on Wednesday afternoons to help smooth their transition.

We have now started another new term and welcome back our existing and also all of our new children – we have lots of exciting things planned for our return. We are concentrating on supporting and settling children into routines, and our topic this term is called 'All about me' and the children are looking at what they look like, what they like to play with and who their family and friends are. We are making books with drawings and information for the children to keep and take home.

If you would like your child to enjoy a stimulating, fun and safe environment to learn and play in, we'd love to hear from you. Spaces for this term are filling up very quickly and some sessions already have a waiting list. However if you are interested in coming for a visit then please contact us we would love to meet you!

Our playgroup offers care and education for all children in a well established community based group. We offer your children a safe and stimulating environment in which they can grow and blossom into self confident, self reliant and positive little people.

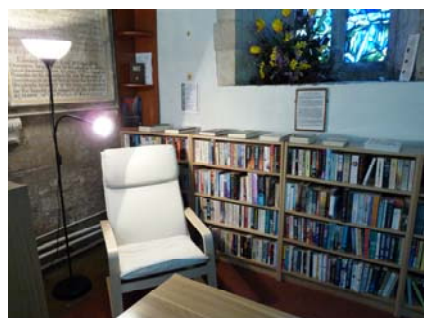
Our ultimate goal is to enable the children to have fun, explore and have the freedom to express their individuality, while forming the basis of their education.

We accept children from the age of 2yrs 6month to 5 years and operate 4 days a week (Monday – Thursday) offering full and half day sessions. We accept government nursery vouchers and other types of employer supported childcare vouchers.

If you would like to have a look around our fantastic facilities and have an informal chat please call one of the staff on 07977 342 742.



St Michael and All Angels Church Library



The Library at the Church has recently been completely refitted and reorganised with new bookcases, easy chairs, a coffee table and even a reading light so you can browse at your leisure. There is a wide selection of books including popular fiction, biographies, history and leisure interest. Why not have a look and see what is on offer?

All we ask is a small donation - 50p per book if you want to buy or 20p to borrow. Proceeds will go to the Church Funds.

Friends of St.Michael's - Result of first meeting.

The meeting took place in Church on Wednesday 6th September. A total of 11 people attended and 3 more have indicated an interest. The PCC will now consider how it wishes to take the Friends forward. Though there were not many people there on the night there are, nevertheless, indications that there is a basis on which a scheme that will help to preserve the fabric of our Church can be built.

In the meantime, please contact The Rector or one of the Churchwardens (details in SPAN) or Robin Harris (robin@harrisnestings.fsnet.co.uk or Tel 01453 823433) if you wish to express an interest in joining a "Friends of St Michael's" organisation.

EASTINGTON HORSE SHOW - Saturday August 4th 2012

In spite of many horse shows around the locality being cancelled due to the wet weather, we were very fortunate to be able to go ahead with ours. The sun shone and everyone seemed to enjoy themselves.

Wilf Spencer loaned us the use of his land again this year, so a huge thank you goes to him and his family, as we took the field by storm for nearly a week beforehand, with the arrival of toilets, roping up of the rings and the putting up of the show equipment and marquee. The evenings before the show were busy with Alan, Phil and Graham running around collecting things and roping up the arenas. Many thanks also go to the people who helped out before, during and after the event. The team of helpers putting up the jumps and marquee, the helpers on the day, and of course a huge thanks goes to the air cadets. Then finally closing it all down again - with Alan still on the field at 10.00 at night (he must have a very understanding wife).

There were some high quality horses in the showing classes gaining complimentary remarks from the judge, the overall champion being of a very high standard.

In the adjacent ring the native breeds could be seen strutting their stuff.

The show jumping ring was in action all day with some very dashing riding against the clock to decide the winners, while on the other side of the field were the children enjoying competing and playing the usual gymkhana games with their ponies.

In a quiet field adjacent to the show were the dressage competitors performing their exacting movements.

Many local charities and others have benefited from this annual show, which would not take place without the generosity of the Spencer family, the sponsors and the many helpers.

EASTINGTON YOUTH GROUP

Thank you to everybody who attended our fete, dog show and car boot sale in September, another good day was had by all! The sun shone and the atmosphere was lovely too. We had sumo suits and bouncy wrestling which the kids loved.....and we raised approximately £500.00. Thanks to all our volunteers who helped on the day.



We are busy looking at ways we can utilise our PODS and plans are being drawn up for different layouts. We are working with our Parish Council and local organisations on this project. If anyone has any building/trade skills and/or would like to join our POD sub committee then please let us know.

Activities for the youth have been quieter over the summer months with holidays and commitments. The youth have been enjoying the groups and activities run by the Methodist Church, and now we are back to school the Youth Bus will hopefully be visiting

once a week. We are also working with Young Gloucestershire, who will put workshops and activities on for our youth.

If you would like to contact the Youth Group, please call:

Tina, Secretary: 0789 1579754; Ali, Chair: 0788 8661303



Jolly Joggers

Turn your life around and join our merry throng of 'Jolly Joggers' every Monday and Friday.

We meet outside Eastington Primary School 9am sharp. It's totally free and fabulous fun. Walk, jog or run...we can accommodate all abilities.

We usually do a 2 mile circuit around the village ending up back at the school. Why not build up your speed and stamina and enter 5K, 10K or Stroud Half Marathon...you can do it!!

For further information please contact **Vanessa 01453 828557**. A warm welcome awaits. Don't forget we are all beginners and learning together... pick up the phone and call me today!



Eastington Bluebell Club

Coffee Morning

10.30 am Saturday 20th October

At Eastington Village Hall.

Tombola, Raffle, Cakes, Groceries

Entrance 50p. All welcome

**For further details about the Bluebell Club
please contact
Anne Shill, Tel: 01453 822061**

Eastington and Stonehouse Slimming World Groups

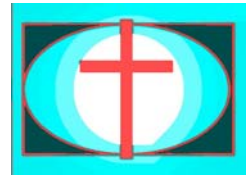
Autumn is on the horizon and the nights are beginning to draw in. Dare I mention that its 14 weeks til Christmas at the time of writing this piece - but its one thing we have been looking at in group as if you lose 1lb a week that's a whole 1 stone lighter for Christmas Day, or a 2 lb.'s a week loss means you can be a stunning 2 stones lighter by Christmas Day!! Definitely makes us all think!

We have moved location in Stonehouse and now meet every Wednesday at 9.30am but the group is held at the Stonehouse Community Centre off Regent Street. A lovely big hall, plenty of parking.

So with the colder months ahead we are starting to plan what meals can be enjoyed during these months. Lovely homemade soups, stews and casseroles - there are so many lovely recipes to choose from, as well as roast dinners, chillies and curries or a straight forward jacket potato and beans - all of these can be enjoyed while still losing that weight. We have also talked about cooking on a budget and also when you have limited time. We have had fun looking into ideas for cooking for friends, family and dinner parties. So, as you can tell, Slimming World can help you lose weight and still enjoy socialising, as well as helping you to manage those day-to-day obstacles that can come your way while you are losing your excess weight.

So if you would like to lose many stones or half a stone Slimming World is on your doorstep and waiting to help with healthy, filling foods that all the family will enjoy. Come along and find out more at Eastington Village Hall, 7 p.m. Wednesdays or Stonehouse Community Centre, Wednesday mornings at 9.30am. I look forward to welcoming you to group.

Best wishes **Lorna 01453821751**



Being the Community of Jesus

Over the next couple of months, our main 11am Sunday morning services and our Tuesday evening house group will be following the theme of "Disciples in the Church – Being the Community of Jesus". In this series, we will be looking at how individuals relate to the Church as proclaimers, worshippers, sharers, nurturers, celebrators, receivers and bearers of spiritual power, discerners of God's will and teachers of the Truth and finally, as humble servants.

This is quite a long list of attributes and although some people may be gifted and particularly active in one or two areas. However, all Christians should all be able to make a contribution to all of them to some degree as part of the community known as Church.

Have you thought of sponsoring a child growing up in the third world?



In spite of all the current economic difficulties, few would argue that life in this country was on a par with the nightmare that is life in many poorer parts of the world. Although things are improving, there are still millions of children in many countries for whom life is a struggle and the prospects of an education, enabling them to break the poverty cycle, a slim prospect.

Compassion seeks to pair up individual children with individual sponsors so their lives and prospects are transformed. The cost is £21 per month which is enough to keep them fed, provide healthcare and an education. Please see www.compassionuk.org for details.

Eastington Methodist Church has been sponsoring Seble in Ethiopia since 2004 and several other children around the world are sponsored by members of the church.

Kidzone

Kidzone has restarted on Wednesday evenings at 6:15 - 7:30pm during term time. As we had so many migrating up to the Youth Club this summer, we were slightly concerned that the number of those remaining would not constitute a viable group. However, a good number of new children have started to come but there is still room for a few more if you have children over the age of 7 of primary school age. There are various activities and a drink and something to eat all included in a fee of 75p per child on the weeks they attend.

Friday Youth Club

Matt Gatt, who leads the Sunday Morning worship and is studying music at college this year, has been appointed as Youth Work Assistant on a part time paid basis. This should allow the introduction of new activities on Fridays, a follow on to the Youth Alpha series that is about to complete and other things as well. At the moment on Fridays, we have a good number attending the 7 - 9pm session but are looking to offer something slightly different to older teenagers perhaps later in the evening.

Mothers & Toddlers

If you are a new parent, you might want to consider coming to Mothers and Toddlers on Monday mornings at EMC starting at 10am.

Line Dancing

If you are into Line dancing or feel the need to get some exercise and want to do it with others, you might like to consider joining our group that runs from 10am to noon each Tuesday.

Tuesday Daytime Bible Studies

This group meets from 1:00 - 2:30pm and includes a light lunch. At the moment it is covering the theme of forgiveness.

Ken & Beck Burgin 01453 827414

www.EastingtonMethodists.org.uk

Remembrance

*"If I should die, think only this of me:
That there's some corner of a foreign field that is forever England"*

Two lines from that well-loved, poignant poem by **Rupert Brooke** (1887-1915).

'Suffused with patriotism, Rupert was happy to die for his country. He died, however, not in battle but of acute blood poisoning and was buried on the Greek Island of Skyros.'

I came across this information, together with a picture of Brooke's grave while researching my own family history, on the website of **The War Graves Photographic Project (TWGPP)**. The project's aim is to photograph *all* Commonwealth war graves and memorials which, for many of us, are impossible to visit due to their distant locations. The website also includes graves in home cemeteries and churchyards such as Eastington's.

The Eastington War Memorial was unveiled by Brigadier General J. E. Bush C.B. in August 1920. 29 souls are commemorated thereon - 22 who died during WWI and 7 names added after WWII. Perhaps these brave young men were, like Rupert Brooke, 'suffused with patriotism' when they first joined up.

I have found details of most of the men commemorated on the memorial; I have also discovered that there is many a '*... corner of a foreign field that is forever... Eastington*'.

Where I am unsure that I have traced the right man, I have italicised the text. If any reader can provide correct or further information, I will be pleased to put the record straight.



First World War

Lieut. Hugh Godfrey de Lisle Bush M.C. served with the 3rd Gloucestershire Regiment. Wounded at Loos in 1915, he eventually died in Torquay on 17th January 1917, aged 24. He was buried in Eastington Churchyard – a fine granite monument bears his name. As far as I know he was Eastington's only WW1 casualty buried 'at home'.

Captain John Stewart de Lisle Bush, who was Hugh's younger brother, died in France on 25th August 1917 aged just 21. He is buried at Honnechy British Cemetery, in France. He first served with Somerset Light Infantry. Later, while with 41st Squadron Royal Flying Corps (R.F.C.), his Sopwith biplane plane was shot down. (R.A.F. was carved on the Memorial but John flew with the R.F.C. The R.A.F. was not formed until 1918.)

Private Ernest Lewis Creed of 9th Bn. Gloucestershire Regiment is buried at Salonika (Lembet Road) Cemetery in Greece. He died of Malaria on 1st August 1917 aged 36. He was the husband of E.A. Ash (formerly Creed) of The Quay, Westgate Street, Gloucester. Between October 1915 and November 1918, the British Salonika Force suffered some 2,800 deaths in action, 1,400 from wounds but the majority, 4,200 from sickness.

A Private H Drew of 1st /4th Bn. Gloucestershire Regiment is buried at Poelcapelle British Cemetery, Langemark-Poelkapellewest-V, Belgium. He died 10th October 1917.

Lance Corporal Lawrence Duxbury of 1st Bn. Royal Berkshire Regiment died on 8th October 1918 aged just 19. He was buried at Noyelles-Sur-L'Escaut Communal Cemetery Extension, France. He was the son of Thomas and Mary Duxbury of The New Inn, Newtown, Stonehouse.

A Private H. Harvey, born in Bristol, enlisted in Dursley, died in Mesopotamia, according to the **Soldiers of Gloucestershire** website. A further search of the **CWGC** website yielded a Private H. Harvey of 7th Bn. Gloucestershire Regiment, died 9th December 1917 and is buried in Baghdad (north gate) War Cemetery, Iraq.

Private Thomas Albert Howell apparently served with The Worcestershire Regiment rather than the Norfolk, as is stated on the Memorial. He died 27th August 1917 aged just 19 and is buried at Track X Cemetery, near Ieper (Ypres), West-Vlaanderen, Belgium. The site of this unusually named cemetery lay between the Allied and German front lines in June 1917. The cemetery was begun at the end of July 1917, after Commonwealth forces advanced on this front. Thomas was the son of Louisa Howell of Windsor House, Eastington, and the late John Howell.

Private George Keene of 2nd/4th Bn. Gloucestershire Regiment and **Private A.E. Keene** of 1st Bn. Gloucestershire Regiment were two sons of Leonard and Emily Mary Keene of The Castle Inn, Millend, Eastington. **George** was killed in action 31st October 1917, aged 25 and is commemorated on the Arras Memorial, Pas de Calais, France.

His younger brother, **A.E. Keene**, was born in Barnsley near Cirencester. He died 9th September 1915 aged 21 and is buried at Longuenesse (St Omer) Souvenir Cemetery also in Pas de Calais.

Lance Corporal Robert James Hulbert of the Royal Gloucestershire Hussars died 10th October 1915. He is buried at Green Hill Cemetery, Gallipoli, Turkey. He was the son of Thomas and Annie Hulbert of Claypitts Farm.

A **Corporal Thomas A. Lewis**, 1st Bn. Gloucestershire Regiment, was killed in action 9th May 1915. He is commemorated on Le Touret Memorial, Pas de Calais, France. The Memorial bears the names of over 13,000 men who fell in the surrounding area and have no known grave. A **Lance Corporal Thomas H.R. Lewis** of 1st/5th Gloucestershire Regiment died 21st July 1916 and is commemorated on the Thiepval Memorial, Somme, France. Neither man was a L. Sergt. as stated on the Eastington Memorial. Which man has the Eastington Connection?

Private Herbert Marling of 7th Bn. Gloucestershire Regiment is commemorated on the Helles Memorial at Gallipoli in Turkey. He was killed in action, 8th August 1915.

A **Lance Serjeant H.J. Ruck** of 1st Bn. Grenadier Guards died 26th September 1916 and is buried at Caterpillar Valley Cemetery, Longueval, France.

Private Artemus Silvey of 1st /5th Bn. Gloucestershire Regiment was killed in action on 4th October 1917 and is commemorated on the Tyne Cot Memorial, West-Vlaanderen, Belgium. The Tyne Cot Memorial is one of four memorials to the missing in Belgian Flanders which covers the area known as the Ypres Salient.

A **Private J. Sleeman** of 5th Bn. Gloucestershire Regiment, born in Taunton, was killed in action 21st May 1915. He is buried at Ploegsteert Wood Military Cemetery at Comines-Warneton, Belgium.

A **Corporal T. G. Tudor** of 2nd Australian Light Railway Operating Company died 26th October 1917 and is buried at Voormezele Enclosures No1 and No2 at Ieper West-Vlaanderen, Belgium.

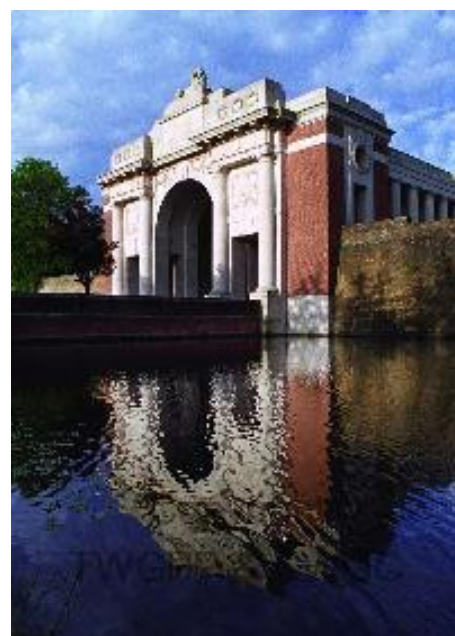
The Ypres (Menin Gate) Memorial is another of the four memorials to the missing in Belgian Flanders covering the Ypres Salient. It bears the names of over 54,000 officers and men whose graves are not known. Each night at 8 pm the traffic is stopped at the Menin Gate while members of the local Fire Brigade sound the Last Post in the roadway under the Memorial's arches:

Private Alfred M.S. Underwood of 1st Bn. Gloucestershire Regiment was killed in action on 23rd October 1914, aged 30. He was the son of John Underwood of Westend and husband of Mary Louisa Underwood of Gossington, Slimbridge.

Corporal (Thomas) M. Shill, 1st Bn. Gloucestershire Regiment, born in Eastington, was killed in action on or since 7th November 1914.

A **Private Samuel Henry Reynolds** of 54th Bn. Australian Infantry A.I.F. Died 23rd September 1917. I am not sure that is our man, but from the given information – surname, initial, rank and regiment – it seems likely.

Also: A **Private John Davis** of 1st Bn. Gloucestershire Regiment. However, the name **J Davis** is common – there are three in that regiment on the **CWGC** website and even more on the **Soldiers of Gloucestershire** website. I could not find a connection with Eastington for any of them.



© TWGPP

Private J. Wothers of 9th Bn. Gloucestershire Regiment was born in Harvington, Worcestershire. He died on 25th April 1917 aged 24 and is commemorated on the Doiran Memorial, Salonika, Greece. He was the son of R.G. and Harriet Wothers of Eastington.

Private Gilbert Young 4th Bn. King's (Liverpool Regiment) died 23rd July 1916, aged 34. He is buried at St Sever Cemetery, Rouen, France. On the **CWGC** website, intriguingly it says he 'Served as WATSON'. He was the son of Mr. and Mrs. H. Young, of Eastington.

Second World War: These commemorated men may have relatives in Eastington or nearby so I tread softly.

The graves of **Major Claude de Lisle Bush**, **Private Harold Walter Barnes**, **Craftsman Marston John Everett** and **Warrant Officer Ernest John Knight** are all in St Michael & All Angels Churchyard.

A second commemoration is on W.O. Knight's gravestone – that of '**Warrant Officer Eric Robert Watkins R.A.F., late of this Parish, who lost his life on active service in Burma, March 4th 1944, aged 27**'.

WO Watkins is not mentioned on the Eastington War Memorial. However, I traced him on the **CWGC** website and found that he served with 84 Sqdn. R.A.F. Voluntary Reserve, as a Navigator/Bomber. He is buried at Taukkyan War Cemetery in Myanmar (formerly Burma). He was the son of John William and Laural Watkins, of Gloucester.

A Rifleman Ernest John King of 9th Bn. Cameronians (Scottish Rifles) is buried at Reichswald Forest War Cemetery, Kleve, Germany. He died in February 1945, aged 25. This Cemetery was created after WWII when burials were brought in from all over western Germany. It is the largest Commonwealth cemetery in Germany.

A Private F. Winfield served with the Gloucestershire Regiment, 'attached 12th (10th Bn. The Green Howards [Yorkshire Regt.]) Bn. The Parachute Regiment, A.A.C.'. He died 19th August 1944, aged 29, and is buried at Putot-en-Auge Churchyard, Calvados, France. He was the son of Harry and Elizabeth Winfield; husband of Peggy Winfield of St Paul's, Llanelly, Carmarthenshire

Flight Sergeant Cyril Arthur Cowley, R.A.F. died 30th October 1942 and is commemorated on an Air Force Panel on the Alamein Memorial in Egypt (shown right). The memorial was unveiled by Field Marshal Montgomery of Alamein on 24 October 1954. In November 2011 a small cross with a poppy was placed for Cyril on Eastington War Memorial.



Val Taylor Tel: 01453 824570

email: valtaylor@cressgreen.myzen.co.uk

References:

The Websites are all very user-friendly. The first has photographs of individual gravestones and you can order a print for a small sum. The second has details of each casualty, general views of the cemeteries and memorials with directions of how to visit them and information on their design and history:

The War Graves Photographic Project (TWGPP): <http://www.twgpp.org/>.

Commonwealth War Graves Commission (CWGC): <http://www.cwgc.org/search>

The Soldiers of Gloucestershire website: <http://www.glostesters.org.uk>



Although there is no longer a Branch in Eastington, the work of The Royal British Legion continues to be much in demand and includes financial support for the "Help for Heroes" charity. John Darwent continues to look after the Poppy Appeal, but will need more volunteers as collectors for this November. Robin Harris continues as a Case Worker. Please contact either of these people (822040 and/or 823433) if you can help with the Poppies.

Help needed for The Soldiers of Gloucestershire Museum

The Soldiers of Gloucestershire Museum in Gloucester Docks won the award of the Best Small Museum in Britain in 1991. It is now embarking on a major project to refresh its displays, which will introduce modern technology and increase its appeal and relevance to a greater segment of the visiting population.

It has been successful in winning the first stage of a Heritage Lottery Fund and is now embarking on the second stage to win the major grant needed. To do this the Museum has a lot of work to do and needs help from volunteers to help with a variety of tasks from cataloguing and conditioning silver and plate, to research using the archives, to IT skills or even to gaining retail experience in the shop.

If anyone could give the Museum a few hours a week or even a month then this would be a tremendous help to one of Gloucestershire's assets. The Museum cannot afford to pay but it will meet travel costs and for some this could be a useful contribution to a CV.

Anyone interested should contact the curator either by telephone on 01452 522682 or by email at curator@sogm.co.uk. Alternatively they might like to visit the Museum and find out for themselves what it has to offer or look at its website www.glostesters.org.uk.



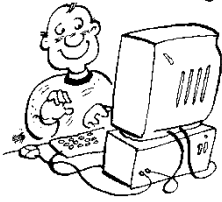
St. Michael and All Angels' Church, Eastington

One of the 'Cotswold Edge' Parishes

(Eastington, Frocester, Haresfield, Moreton Valence, Standish and Whitminster)

Our mission is: to show God's love for His people, and nurture His people's love for God

THE RECTOR WRITES



Dear Friends,

We are in October, the month in which we in our parishes and schools in this part of the world have come to celebrate Harvest Festival. However, harvest this year seems to be more of a relief than a celebration as yields are down, quality poorer and milk prices still too low for farmers' liking. A pretty depressing state of affairs to go with the wider national picture I'm afraid. At least we have a harvest, and access to food – though it is also depressing that more people are being helped by local charities like Foodbank, Marah and GEAR.

It is still heartening that people are willing to share what they have with those less fortunate than themselves, whether it be money, time or actual food, and if you are uncertain how to donate food, then just bring it to the Rectory, or better still to one of our churches to be given thanks for at a Harvest Festival – they are spread over the first three Sundays in October, and the details of when and where they are being held are on the table of services. Our Parochial Church Councils decide where the proceeds go – but we normally give the food to GEAR in Gloucester, and money donations to a variety of charities at home or abroad. Our three schools also collect, so please be as generous as you can.

Having had such a short and soggy summer, I wonder if it would be too much to ask that the autumn might be a little sunnier and drier? I don't think the Bible ever speaks about Jesus coping with flooding, though Noah seemed to deal with one, though in a rather extreme fashion! Of course Jesus did demonstrate his ability to walk on water, which has become a phrase synonymous with attempting the seemingly impossible. I believe that many of us feel that this is exactly what we are being asked to do – attempt the seemingly impossible.

What do you find particularly difficult in life? I won't go on about what I find particularly hard, or well nigh impossible, as it would be an extremely long list! But what about you – what would you list? Do you find that your life feels a bit like juggling half-a-dozen eggs, and every so often you drop one, it smashes, and you try again only for the same thing to happen again? Do you persevere, or throw the eggs at your nearest and dearest, and run away screaming, 'I just can't do this anymore!'

That's why you need someone to help – most people can juggle two eggs, and with practice and care, three. So just one person may be able to help you achieve that which you find impossible alone. That's where faith comes in – it gives us the determination to keep trying ourselves, and the inclination to help others achieve too. Remember Jesus took Peter's hand and helped him to walk on water (Matthew 14. 28-33), and you also may be in a position to either help or need help. What faith asks is - are you ready to do either or both?

Yours in Christ,

Rector: Revd Richard Amys, The Rectory, Millend Lane, Eastington, GL10 3SG.

Email: richardjramys@aol.com. Tel/fax 01453 822437. Day off – Saturday. (Mobile 07796 956050)



Christmas Table Top Craft Sale

**At Eastington Community Centre
on Saturday 3rd November 2012 at 1.30pm
Entrance fee 20p – proceeds to the Church
Tombola -Tea/Coffee and cakes**

Tables £10.00. Enquiries Bernie Cave 01453 821910



Services in October and November

Sundays→	<u>7th October</u> <u>18th after Trinity</u> (p581 - green) <i>Genesis 2.18-24</i> & <i>Mark 10.2-16</i> (p688/9)	<u>14th October</u> <u>19th after Trinity</u> <u>Harvest</u> (p722 – green) <i>Joel 2.21-27 & Matthew 6.25-33</i> (p723/44)	<u>21st October</u> <u>20th after Trinity</u> (p1191 - green) <i>Job 38.1-7, 34-41 &</i> <i>Hebrews 5.1-10</i> (p696/7)	<u>28th October</u> <u>Bible Sunday</u> (p725 - green) <i>2 Timothy 3.14-4.5 &</i> <i>John 5.36b-47</i> (p727/8)
<i>Service →</i> <i>Readings</i>				
	10.45am Holy Communion (Angela Reeder) Wed 10 th 7.30am BCP Communion	10.45am Harvest Communion Wed 17 th 7.30am BCP Communion	6pm Sung Evensong Thurs 25 th 9.30am BCP Communion (Angela Reeder)	10am Holy Communion for the benefice at Standish (Bishop Michael) Wed 31 st 7.30am BCP Communion
Sundays→	<u>4th November</u> <u>All Saints'</u> (p706 - white) <i>Revelation 21.1-6a</i> & <i>John 11.32-44</i> (p707/8)	<u>11th November</u> <u>Remembrance Sunday</u> (p714 - red) <i>Jonah 3.1-5, 10 & Mark 1.14-20</i> (p715/6)	<u>18th November</u> <u>All Souls</u> (red) <i>Isaiah 25.6-9 & Matthew</i> <i>5.1-12</i> (p707/711)	<u>25th November</u> <u>Christ the King</u> (p720 - red) <i>Daniel 7.9-10, 13-14 &</i> <i>John 18.33-37</i> (p720/2)
<i>Service →</i> <i>Readings</i>				
	10.45am Holy Communion Wed 7 th 7.30am BCP Communion	10.45am Remembrance Communion Wed 14 th 7.30am BCP Communion	6pm All Souls' Service Wed 21 st 7.30am BCP Communion	10.45am Holy Communion Wed 28 th 7.30am BCP Communion

Italian Evening



Mike and Jacky Naylor are hosting this at Cleeve Cottage in Millend, Eastington, GL10 3SF on Saturday 23rd November. 7.30pm start, and £5 a head to include Italian food and a glass of vino! Tickets available from them – phone 01453 828682. Proceeds to the Church.



Competition



The Revd Leslie Virgo is offering prizes to children who can write or draw.

The subject is: 'The Church and the School in Eastington are just across the road from one another – bring them together in a picture or a poem'.



There are two age groups – Key Stage 1 and younger, and Key Stage 2.

Leslie will judge the entries. The winner in each category will win £15, and the runner-up £10.

Entries must be handed in on or before Monday 10th December to the Rectory, or to the school, and the winners will be notified and prizes presented at the

Christingle Service in the Church on Christmas Eve at 6pm if possible.

Birder in the Parish

Sunday, 24/06/12: Roe Deer pair in the meadow tonight. Think they must use the deep ditch as cover - then they come out under the cricket-bat willows into the tall grass to feed.

The deep ditch was used to control the height of the Frome south arm when it was backed up to drive the water wheels at the mill by sluicing it off, and then re-connecting with the Frome below the mill, somewhere in the grounds of Eastington House. Excess water from the water meadows also drains into it, so, a pretty useful piece of low-tech kit, when it's properly maintained. When Mr Warner owned these meadows and grazed his cattle here, the ditch was tidied and cleared out twice a year, which provided a good feeding spot for Green Sandpipers in late summer and into early autumn. Now overgrown, full of fallen trees, branches and Himalayan balsam.

27/06/12: lovely, soft, warm evening. Pipistrelles feeding close in to the upper willow canopy. At least four Ghost Moths in the meadow. All calm and quiet.

05/07/12: lush southerlies all day, in the 20C's. Garden Tigers on the wing. By early evening, winds turn slightly south west, tiny bit cooler – fine weather! Clear atmosphere.

06/07/12: persistent rain by late morning, but did get down to Slimbridge to tick Greenshank for the year list.

13/07/12: three Red Admirals, two Commas and a Small Tortoiseshell on the buddleia. In the evening, three Silver Y's, a Yellow Underwing and a Swallow-tailed moth.

Saturday, 14/07/12: continuing fairly dismal weather, just starting to get a little bit depressing now! If it continues through the year, it's gonna be a long winter!

19/07/12: suddenly obvious that no Chiff Chaffs are singing, in fact, not many birds in song at all, so most migrant breeding appears to be over. Eerily quiet well into the evening, but a Song Thrush in song late on.

20/07/12: stunning very early morning, clear blue outer space, meadows shrouded in mist; no wind, no rain! Heavy mist by later a.m., with sun obscured.

Interesting bird news today - a summer plumaged Long-billed Dowitcher at Slimbridge, and a ringer texted me with news of a Redwing they had just ringed – they're not normally with us until October, to spend the winter here!

Strangest thing late evening, high, fragmented, rippled alto cumulus clouds moving very quickly south, but not a breath of wind at ground level, not a leaf stirring – absolutely still. Surreal.

23/07/12: super moths at the trap this morning – female Poplar Hawk, Large Elephant Hawk, Ruby Tiger and a Peppered moth (photo right) amongst many – micros fly off before I can identify them!

Wednesday sees the fifth day of gloriously hot weather. Sat out late last night when cool and quiet – fantastic shooting star across the Eastington night sky, and counted at least fifteen satellites over.

No bird song at all today; sometimes a distant burst of Song Thrush singing late, and signs that the post breeding migration is under way with many waders at Slimbridge.

Friday 27/07/12: change – cooler, with a lot of cloud, but was warm until very late last night, with bats feeding off the buddleia so close that I could feel the air from their wing beats!

29/07/12: after so much heat recently, it's almost reassuring to have heavy rain again – which gives at least some blessed relief from barking dogs. Weather very much cooler from the west. Wood Pigeons the only birds singing now; Chiff Chaffs feeding low down through the balsam.

04/08/12: torrential rain, almost tropical; very few butterflies in garden, and no Swifts now – all migrating south. Big female Sparrowhawk had killed, and was eating a Wood Pigeon under the apple tree – had a good look at her through the bins', - she didn't seem to mind at all. She did try to carry it off, but gave up and just carried on eating.

Sunday 19/08/12: Migrant Hawker dragonfly in the garden, and a male Goshawk and a Hobby over. The next day, five Ravens in the east meadows.



25/08/12: have now recorded three species of cricket in the garden – Dark Bush Cricket (male below), Speckled Bush Cricket and Field Cricket .The crickets emerge when the sun hits the front garden and they climb up the scabious to sun-bathe. I quite often find the Speckled Bush Cricket in the house. Cats unfortunately kill them when they can, and they also come into the garden at night to get moths.



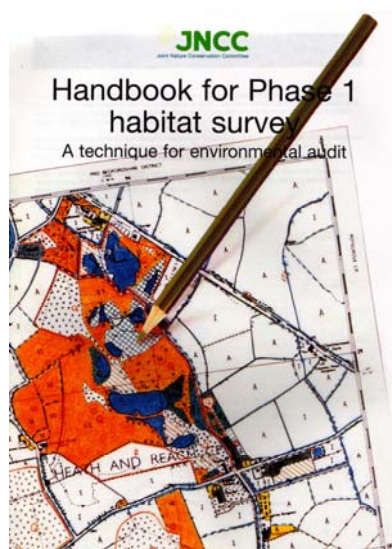
03/09/12: really good early Autumn weather for the past three days now, with temperatures into the 20C's. House Martins still feeding young at the nests. By the 10th, the buddleia is second blooming and attracting many Silver Y moths, and one Painted Lady butterfly with torn wings – first one for a long time - and at least five Migrant Hawkers (dragonflies) hunting flying queen ants. Family parties of Swallows and House Martins on the cottage roof, lively and chattering – not too long now before they will be gone south. In Gilbert White's day (he of '*A Natural History of Selborne*', collected letters written in the 18th C), there was little understanding of bird migration, and it was assumed that Swallows and Martins spent the winter here, even at the

bottom of ponds, because that's where they were usually first seen in the Spring! White studied all forms of natural history with an excellent eye for detail, generally having to arrive at his own conclusions about what he observed, there being no science available, and the book makes for a fascinating read.

5/9/12: some very interesting, breaking national bird news today. A juvenile Long Billed Dowitcher had been found at Lodmoor RSPB nature reserve in Weymouth (there's been an adult at Slimbridge WWT for six weeks now) at the beginning of the week, but was identified today as a Short Billed Dowitcher – only the second ever record for the UK! These are closely related North American waders where positive identification relies on quite small plumage details; caused quite a stir in the birding world!

12/09/12: walked up-river today. Both arms of the Frome in the east of the Parish are now in a poorly maintained state. The willows desperately need pollarding to allow sunlight into the water to encourage insect life, and there are fallen trees and branches in the river in a number of places. Used to be full of fish, but not much sign of them now – the natural cycle is breaking down.

The Parish Wildlife Habitat Survey



The sunny weather in March looked promising and I was hopeful that we could get the parish wildlife habitat survey off to an early start. Although the training day wasn't that well attended some surveying of the area around Cress Green got underway but was soon rained off and it didn't really get underway again.

The period when we needed to look at grasslands and meadows to see if they have any interesting wildflowers was May and June but these months passed under a deluge of rain and an important window of opportunity was lost this year.

Those fields that we did look at weren't that interesting and to date the best grassland habitats for wildflowers in the parish appear to be in the Parish Churchyard and on the roundabout and roadside verges at Chipmans Platt.

Still not to be deterred we will try again next year!

Dr Colin Studholme

The Good Old Days?

We tend to think of interest in local history as a fairly recent innovation, but this is not necessarily the case. More than a century ago, Eastington villagers were already taking note of what had gone before, particularly when it was within living memory or within a generation or so. As part of this, the Eastington Parish Magazine's anonymous 'roving reporter' of the time recorded interviews with older members of the parish, and 'Chats with old inhabitants' was a regular feature. Reading these is like opening a door to the past and it's almost possible to hear the broad Gloucestershire dialect spoken by our forefathers, but now disappearing fast. The following comes from the July 1893 edition of the magazine:

CHATS WITH OLD INHABITANTS

"Well, Daniel, I'm glad to see you still get about as usual. See, what was the last milestone – birthday, I mean, you know?"

"Ah Sir, this is my eighty-third. I've much to be thankful for, and that I haven't to bide-a-bed."

"And were you born in the parish, Daniel?"

"Yes Sir, in one of the cottages that is pulled down long ago and rebuilt".

"What do you say about the old times: were they better than now?"

"No, I don't – they were harder times a deal for poor folks, scores of them going without shoes or stockings, and things very dear".

"Well, what did bread cost in those days?"

"Why, it was fourpence for a very small loaf - quarter of a quartern [a 4 pound loaf], and not weight neither. Then a pound of sugar we can get now for threepence was eightpence then, and other things the same. It's easy times now compared to then".

"How about learning. Did you ever go to school?"

"Oh no; there weren't no schools like 'tis now – least only small schools in the cottages. I went to a man named William Hurd for a while; he had just a few of us. He was a weaver and had two looms in his house. A man we called 'Cherries' worked one of them. He had been in the service. We had to learn while the looms were hammering away. "

"And what lesson books had you?"

"Oh, only the Bible or Testament – perhaps a small book to learn out letters from. We never did no writing. I never learnt it. The first I remember as set that going was they at the Wesleyan Chapel. When I first remember there was only one gig in the parish; that was the one old Mrs Hicks used to drive in, that lived in the Leaze [Eastington Park]. William Fletcher was her coachman. She was the widow of Mr Henry Hicks. He used always to go about on a little horse he had".



Eastington Park, formerly The Leaze, built c1815 by wealthy land and mill-owner Henry Hicks

“Do you remember The Leaze being built?” [about 1815].

“No, I can’t say that I do; but I recollect Churchend Mill [it stood immediately behind the school] being enlarged and the steam engine being put in” [this was a beam engine supplied in 1822 by the famous company of Boulton & Watt].



Part of the Henry Hicks’ huge Churchend Mill that stood behind the present school

“How about the roads. Wasn’t Spring-hill’s pitch once much steeper?”

“Oh yes, I can well mind that; I’ve taken coal up when it was a hard pull.”

“How long was that ago – sixty or seventy years?”

“Yes, all that. It was done at the cost of Mr Hatherall the Rector, by some men from Worcester. They did the road to Claypits about the same time. That was a pretty stiff pull for coaches before. And they made the roads straight and put them into better form. Ah, there’s been many turns for the better here since them days!”

“Good-day, Daniel. We’ll hope it’s still better on before.”

“Good-day, Sir”.

Stephen Mills



- * **Building**
- * **Renovations**
- * **Kitchens**
- * **Bathrooms**
- * **Tiling**

**No Obligation
Estimates and
Consultations**

T: 01453 823686 M: 07866 600961

COMPLEMENTARY THERAPY

In the comfort of your own home
Mobile Complementary Therapist offering
Reflexology, Aromatherapy and Reiki
6 years experience in a hospice
Working with patients, carers and bereaved

For advice and appointments please call

Anita Harland 07977137955



The Eastington Allotments Society

We are now in Autumn. Despite the poor summer, which has been particularly disastrous for potatoes and tomatoes, the rest of the crops have managed to battle through.

The long run of cooler, cloudier weather has had the beneficial effect of keeping the normally anticipated pest numbers down and allowing many crops such as cabbages, sprouts and broccoli to get well established. I certainly haven't seen black fly on my runners this year (...ahem! beans, that is). It hasn't seemed to stop the carrot root fly though, or that one that always gets into the leeks

So, what to do next? Well, there is still plenty to be harvested. Keep an eye on your squashes. They should be ready for picking anytime between now and the first frost. Turn your compost, setting the usable stuff aside. Roughly dig over areas as you clear them, apply the compost, and then just leave it. Let the winter weather do all the hard work.

It's nearly time to plant overwinter onions, including spring onions, which should be ready, surprisingly, in spring. Also garlic. We tend to use quite a bit of this and haven't bought any for 2 years now. I shall probably try to get another year out of stored bulbs but refresh things with new cultivated bulbs next year.

Finally, a quick word on the Autumn Flower and Vegetable show. Despite the difficult summer a good number of people did actually manage to submit some high quality entries. I myself managed to pick up the odd prize here and there. I only managed a third for my peppers though, which was a bit of a disappointment. Some of you might think that this is not too bad...except that I came third out of a total entry of...one!!!!

There is still plenty of chance to get yourself an allotment in time to start preparation for next year. To apply for a plot **visit the Allotments page on the Eastington Parish Council web site, or phone Muriel Bullock on 01453 826172, or Sarah Underdown on 01453 823285**

The Autumn Flower Show

Saturday 1st September saw the 30th Autumn Flower Show being held at the Village Hall. Despite the difficult weather conditions that we have experienced this summer we still had a healthy amount of entries. There was also an opportunity to those who came along on the day to purchase locally grown vegetables which proved popular.

The show itself was shared by two extra individuals this year, which proved to be the topic of conversation as people entered the door to the village hall. Two of the scarecrow entrants were exhibited, which was a new class for this year and one that we are planning to continue next Autumn.

Mrs Q Jones and Mrs S Page were highly successful in their classes and took home many of the trophies for a variety of adult classes.



The children's trophies were shared between Abby O'Neil, Kate and Eva Underdown. They had clearly been busy designing animals made from fruit & vegetables, art work with an Olympics theme, jewellery-making and cooking. Their hard work was clear to see.

Our thanks go to all of those on the committee who helped this event to take place, and also to the judges for their time and expertise.

If you are interested in finding out more about the Fruit & Flower committee, or about the next event they are planning, then please

contact the show secretary:

Mrs S Underdown on: 01453 823285 or email: rogerunderdown@tiscali.co.uk

The Spring Flower Show will be held on Saturday 16th March, - be sure to add this to your diary for 2013!



Eastington Open Gardens!

The Rotary Club of Severn Vale is considering starting an annual open gardens event to take place in the village as a fund raising project for local and other charities. This year we are supporting among others the Cotswold branch of Breakthrough Breast Cancer and Gloucestershire Young Carers who have a local group based in Stroud.

We hope to organise the first "Eastington Open Gardens" next year and if you have an interesting garden, allotment or orchard, however large or small and would like to take part contact Mike Naylor of Rotary Club of Severn Vale on 01453 828682 or email mikernaylor@btinternet.com.

THERAPEUTIC MASSAGE



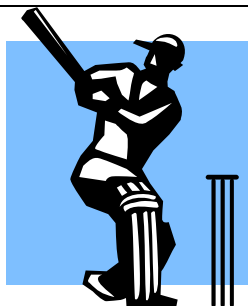
CRANIOSACRAL THERAPY

ANGELA HAYES B.A. A.P.N.T. R.C.S.T

For advice and appointments in
Saul or at Courtyard Clinic, Dursley
call **01452 740788**
or email:
angelahayes972@hotmail.com

It's possible for
the elderly disabled

FOR BACKPAIN • SCIATICA • ARTHRITIS • NECK AND SHOULDER STIFFNESS • HEADACHES
MOTHERS AND BABIES • MENOPAUSAL SYMPTOMS • ANXIETY • FATIGUE AND INSOMNIA



DO YOU PLAY or HAVE YOU PLAYED CRICKET?

Eastington Cricket Club requires players of ANY standard for the 2013 season, with most Saturdays (league) and friendlies on Sundays, midweek days and midweek evenings. We play and practise at OHMG.

Any standard/ability is welcome, to keep our club going.

Please contact Steve Gallagher on 01453 791209

'Chi Gong' Energy Health Class

Try it for 10 weeks and feel the difference!

Learn how to relax the body, build strength and release emotional stress and tension with this simple and gentle energy exercise for complete holistic health. Uncover the gentleness of Tai Chi, experience greater self-awareness and live life with less illness, less pain and **MORE ENERGY!**

Medical Chi Gong movements are gentle, nourishing and fun. The 'Ba Duan Jin' (Eight Pieces of Silk Brocade) is easy to learn and practice daily. You will learn new and traditional ways to self treat using massage, movement and breathing techniques that are all proven to benefit health.

Who attends Chi Gong training? Many students nowadays come to Chi Gong through recommendation from GP's or therapists as it has many physical and emotional benefits. Some use it as a way to relax and unwind from daily stress, others require a means of keeping fit and healthy in a complete and holistic way or dislike the thought of a noisy gym. Practicing Chi Gong builds immunity to ward off seasonal illnesses like flu, coughs, colds and allergies. Chi Gong also improves sports performance and resistance to injury.

If you have the feeling that life can be better but don't know where to start! Chi Gong may be 'just what the doctor ordered'. You will learn skills for life that will help you in every step of the journey to greater personal health and longevity. Don't miss this opportunity to take a very rewarding step to better health.



Next 10 week intake starts
Fridays 11am - 12pm - Frampton Community Centre October 12th £80
Tuesdays 7-8pm - Eastington Community Centre October 30th £80
Space is limited to just 10 people so please book early if you are interested.
Please call 07813 921336 or visit
www.energyhealth.co.uk

Tai Chi-Chi Gong is a gentle and powerful way to improve health and well-being every day! Regular practise can relieve common ailments like.....

- **Back & Neck Pain**
- **Sports Injuries**
- **Sciatica & Hip Pain**
- **Anxiety & Panic**
- **Depression & Low Mood**
- **Low Energy & Fatigue**
- **Emotional Stress**
- **Sleep Problems**
- **Arthritis Pain**
- **Osteoporosis**

ACUPUNCTURE

Safe & Professional Treatment for

**Joint & Muscle Pain
Sports Injury
Emotional Health
Digestive Complaints**



CNHC Trusted and Supported by
the Department of Health

**Stonehouse Holistic Centre
& Medical Clinic**

12 Queens Rd, Stonehouse, Glos

Discover client testimonials at
www.stonehouseholistic.co.uk

Call 01453 826501

Includes **FREE** Neck & Shoulder
Tui Na Massage for relaxation



Eastington Community Centre

www.ohmg.org.uk

Available for parties, regular bookings, sports events,
clubs, wedding receptions

NOW WITH FULLY RESURFACED CAR-PARK

Cricket: *Eastington Cricket Club usually play every fortnight during summer months.*

Tel: Ron 01453 822942

Football: *Regular Alkerton Rangers first and second matches throughout the football season.*

Tel: Martin 01453 828712

Eastington Community Centre is the home of Eastington Playgroup. Tel. 07977 342742

Contact Vanessa on 828557 for a friendly chat