

# Eastington Community News

August / September 2013

Nº. 140

After nearly giving up waiting for an elusive 'barbeque summer', July almost took our breath away. The hot open-windowed nights, and scorching days where shade became a premium, left many plants and humans gasping for water. Look inside to see who was rewarded by the final days of steady July rain and Mark Campbell's Eastington weather charts on how 2013 has fared so far.

Few can have missed the great result for 'West of Stonehouse' now removed from Stroud District Council's draft Local Plan. I could say no better of this remarkable achievement than the third paragraph of Cllr. Ken Stephens' newsletter. Now is the time for Eastington to plan its own locally needed development, using its Neighbourhood Plan and Eastington Community Land Trust.

Each of us has a different beginning and end along the 30-year journey that Eastington Parish has been dragged by speculating developers and planners intent on building a new town here. For myself, arriving in the mid-eighties, the beginning was the plan to *treble* the size of the Village with 1000 houses, with the Parish Council in support. The 'sweetener' then was for developers to provide a much-wanted playing field for the Village. Realising the key to the problem was getting a playing field independently, I summoned up the courage to talk to other landowners. When Mrs. Shirley Harris generously offered to donate the current recreation field in memory of her late husband, Owen Harris, this wonderful gift gave Parish protesters new purpose to channel their talents into a new community centre for residents and in forming new groups and activities. Other generous bequests, hours of volunteer effort, and much funding from the Parish Council enabled the fantastic community facilities that we have today. After our latest planning victory, it's the right time to move on to help the Youth Group to realise their ambitions for Eastington youngsters too.

Eastington Youth Group (EYG) is committed to providing much-needed activities for all children living in the Parish of Eastington, and update us with their progress inside. The Parish Council wanted to ensure that a fair proportion of community assets are made available to the young people of this Parish, so gave careful consideration to finding a location for the playground and park. Although modest, by comparison to its financial contributions to the now well-established OHMGC, the Parish Council has made a significant contribution to EYG, to enable them at last to start their exciting community-designed project. We also hear about the Methodist Church Youth Club.

Eastington Parish has a truly remarkable Community building set in eight acres of prime recreational and amenity land. In this edition we read that 'OHMGC (Management Trustees) have a facility that they wish to maximise the use of', and have signed an agreement with Stroud Football Club to that end. This year an Annual General Meeting will be held to which Parishioners are invited. Please make a note in your diary: Weds. 11<sup>th</sup> September 2013 @ 8:00 p.m. Eastington Community Centre.

Please note two more important dates for your diary: Eastington Horse Show Saturday 3<sup>rd</sup> August – N.B. the new venue this year is off the A419 between 'Little Chef roundabout' and M5. Eastington Autumn Flower Show Saturday 7<sup>th</sup> September @ 2pm in the Village Hall.

We have some colour pages to show what fun was had at this year's School Duck Race and Summer Fete. See who you can recognise. We have 'Joys of Walking' by Bill Edwards, and just what has happened to bees and other insects? And flowers? Have you seen the insects inside? 'Birder' of this Parish lists an impressive number of feathered visitors, but what about those that feast on insects?

Following feedback from the Parish Plan survey and with a view to subsidise the ever diminishing Parish Precept (Payment), a Village Trust is being established to evaluate viability of a renewable energy project to generate an independent income for Parish projects. Please see inside for details.

Andrew Niblett (Editor) 824841 ([niblett.parish@talktalk.net](mailto:niblett.parish@talktalk.net))

Val Taylor (Articles Editor) ([valtaylor@cressgreen.myzen.co.uk](mailto:valtaylor@cressgreen.myzen.co.uk))

Tom Low (Distributor & Adverts) 823425 ([tom@hazelcottage.eu](mailto:tom@hazelcottage.eu))

**Next Deadline: All articles by Friday 20<sup>th</sup> September 2013 please!**

**Next Delivery: Friday 27<sup>th</sup> September 2013 please!**

View the "Community News" at: [www.ecn.me.uk](http://www.ecn.me.uk)

No article of part thereof may be reproduced or published without prior permission of the Editor and author.  
The views expressed in ECN are not necessarily those of the editors.

# **DISTRICT COUNCILLOR'S NEWSLETTER**

## **Local Plan**

On the evening of 25<sup>th</sup> July, the Elected Members of the Council decided on what they thought the housing number requirement up to 2031 for the District should be and how those houses should be allocated. This is now called our Draft Local Plan and will be subject to a public consultation period before being put before a government inspector at an Examination in Public.

I am very pleased to report that the Draft Local Plan as adopted by Stroud District Council does not include any strategic housing allocations for either the Village or the Parish of Eastington. The resolution actually states that all reference to 'West of Stonehouse' should be deleted. I believe Eastington has the opportunity within this Plan to decide how many new dwellings it considers the Parish needs up to 2031 and where those houses should be built. (The building of new houses within the established village envelope will however remain much as it was before). Although a Draft Plan, it will be a material consideration in determining all planning applications within the District and will carry weight in both planning decisions and any appeals that may occur. Of all the councillors present at the meeting only one voted against and one abstained. To have this sort of result when only 15 months or so ago, for many on the council our parish was very much the 'preferred strategy' for the bulk of the District's housing allocation, is something many of us could not even dare to dream of.

Getting to this position has involved countless hours of work by many people, and I have a long list of groups I would like to thank who have been instrumental in this decision. Firstly the members of my political group on the council who have always been totally supportive in the work to remove the mass building threat to our Parish. Geoff Wheeler the leader of the group and leader of the council. His input into this process has been invaluable. The Parish Council who, besides being involved totally as a body and lobbying intensely, provided much needed technical input through their planning consultant. This consultant also provided advice and data analysis directly to my group. His experience was of great assistance to us. The Parish groups Keep Eastington Rural and Don't Strangle Stroud. Members of these groups have been tireless in their efforts, providing such things as data research and analysis on both numbers and just about every related document that you could find on the subject. This work and the massive amount of lobbying with this information they have done was a very significant factor in the adoption of the plan. Also all of the residents of the Parish who contributed in many many ways.

Gratifying as this decision was it is far from the end of this issue. To shamelessly copy something Winston Churchill once said during the Second World War, my opinion is, this is not the end, it is not the beginning of the end, but it is the end of the beginning. The work to keep our Parish a rural one continues. The work will now shift into a different form. I personally think that a full review of the process, attitudes taken and such things as slippage in the work on the plan so far should be carried out now by members, to be done in a similar way as Project Management Performance Reviews are carried out in many businesses.

On a totally personal matter, Carole and I would like to thank all residents of the Parish who have offered their condolences and best wishes on the passing of her mother. We would also thank those who attended the funeral service, the reverend Angela Reeder for conducting and organizing the order of service, Barrie White of Allen and White for all the funeral arrangement and Ellie and Julie of the Old Badger Inn for after the service. Jan and Paul Viner of Kopend flowers provided a beautiful floral tribute. All this support has been of great assistance to us at this time.

**Ken Stephens July 2013**

## **No new settlement 'West of Stonehouse'**

Eastington Parish is no longer the major strategic site for housing development in the Local Plan.

On 25<sup>th</sup> July 2013 a full meeting of Stroud District Council (SDC) voted for the amendment agreed at the Policy and Strategy Committee chaired by Geoff Wheeler, Leader of the Council, to remove West of Stonehouse (WoS) as a reserve development site. A great deal has happened since Peter Gilbert proposed

an increase from 1,500 to 2,500 houses for WoS for consideration by the Planning Advisory Panel last November.

This is wonderful news for our community. The Local Plan will now be amended and re issued for consultation in the next few weeks. The proposed housing distribution will now be –

### **Location and Number**

Hunts Grove 500

Stroud Valleys 300

North-East Cam 450

Council housing 150

Sharpness 300

Windfalls 750

### **Total 2,450**

These numbers are, once again, in line with the proposals in the Local Plan that were consulted on in the spring of last year and completely different from those proposed by Peter Gilbert and Barry Wyatt in November last year. I reported in the last edition that Cllr Mike Evans had requested the evidence for these revised November numbers on five occasions. That evidence was never forthcoming and the recommendations of the very competent new Strategic Planning Manager, Mark Russell, to the Environment Committee seem to confirm the November numbers were wrong and that no evidence had ever existed. They would seem to have been adjusted downward to justify the ‘West of Stonehouse’ site. Well done Cllr Evans for exposing this.

Following consultation the plan will be reissued and submitted to an Examination in Public (EIP) probably next April. It is then that we can expect developers to argue vigorously for the overall housing requirement to be increased from the Local Plan of 9,500 to 11,500. If the Inspector were to agree with the developers then, once again, SDC could be in search of a strategic site for an additional 2,000 houses. What will be different this time is that DSS, KER and our PC will be standing shoulder to shoulder with SDC to ensure that the evidence base is rock solid and totally defensible in front of the Inspector. The last two planning appeals (the Rugby Club appeal was successfully argued by KER) have been lost by SDC. In studying the Inspectors reports the quality of the evidence provided by SDC has been a major issue.

It is also possible that in the next few weeks the developers, Hitchens, will submit a planning application for the WoS site. Given that the council has rejected this area as a development site, the application will almost certainly be turned down at Planning Committee and then find its way to an appeal where the argument for higher housing numbers in the Stroud District will be made again. Should that happen we will all again be working with SDC to ensure that the appeal is rejected.

A number of councillors both Conservative and of course Labour, who have always rejected WoS as an option, have been enormously supportive of our campaign. To all of them we extend our very considerable gratitude. This gratitude is not just for their support but their real engagement with the issues, the facts and the numbers. Each time we have challenged the council either the census or the DCLG have subsequently confirmed that we have been correct. We remain disappointed that a small number of key individuals resisted those challenges until, like King Canute, the waves of reality lapped at their feet. It is only with sound and compelling evidence that an Inspector will rule in our favour. In Mark Russell we have someone who recognises this.

Ken Stephens our own local councillor has done a fabulous job in helping the council to eventually come to a sensible decision. Ken, from all of us, well done and thank you.

First the Incinerator, then Swallowcroft and now WoS, our Communities in Standish and Eastington have demonstrated that we will not be pushed around or ‘dumped upon’. We must stay vigilant, the war is not yet won but this remains a major victory and we thank District Councillors for it.

**Daniel James** For DSS



# Eastington Community Centre

[www.ohmg.org.uk](http://www.ohmg.org.uk)

NOW available for parties, regular bookings, sports events, clubs, wedding receptions

***Tel: Vanessa on 828557***

## **FOOTBALL CRAZY!**

The playing field usage at the Owen Harris Memorial Ground has been steadily increasing season upon season, especially since 2009, when the Eastington Community Centre building was fully completed.

Currently many local football teams are requesting to hire the football pitches and facilities within the grounds; this represents valuable funds for the Charity and helps us to maintain the facilities to a high standard.

Why is the site so popular with the footballers?

Certainly it is a very attractive venue: The new Community Centre is well maintained with up to date and pleasant facilities. There are wonderful panoramic views from the site and an excellent car park with newly installed street lighting.

That may be part of the answer, but the real reason is the quality of the football pitches, which are reported to be some of the best in the area for amateur leagues.

The eight acre site was a bequest to the people of Eastington in 1989 by Owen Harris' widow, Mrs Shirley Harris. The restrictions on the land are: 'That it be used for the purpose of a playing field and recreation ground, and community social centre'.

The field, called 'Pies and Packers field' was agricultural land at the time. The first job was to install sports field drainage. Quotes received for levelling and re-seeding the field were astronomical so an alternative strategy was agreed upon. In the first year Andrew Cozens, local Farmer, grew a crop of wheat on the grounds. This helped to clean the field of weeds. The profit from the wheat-grain paid for levelling the field and one ton of grass seed. It took Andrew a day to spread the seed. By the spring, a good covering of grass was showing but the field was not played on until the following autumn to allow the grass to root-in properly.

Over the years, thousands of hours by a handful of volunteers has gone into maintaining the field and getting it to its current high standard. Particular thanks are due to Andrew Cozens who, amongst other things, cuts all the boundary hedges in his own time and to Martin Elliot, who acts as main groundsman.

Due to the current demand on the pitches the Owen Harris Memorial Ground Management Committee (OHMGC) recently decided that pitch 1 needed upgrading with a weed, feed and re-seed at a cost of £1,700.

Around two years ago Stroud Football Club (SFC) Juniors started to hire the facilities for Saturday morning games. SFC Juniors are in the Midland Junior Premier League South, and currently play teams from U12s to U16s. They were so impressed with the venue that they approached the OHMGC to see if they could work in partnership with us to improve the facilities.

SFC has been able to invest capital in the site that OHMGC cannot. OHMGC has a facility that they wish to maximise the use of and, many meetings later, we now have a formal agreement which will be mutually beneficial to both parties and, above all, beneficial to Eastington.

SFC have so far improved the site by putting up new regulation-compliant goal-posts and catch-nets along the motorway boundary. In addition they intend to build external changing rooms at the back of the Community Centre for which planning approval has been granted. They work fast so why not wander down and have a look at the progress?

Other teams who will be playing at the ground next season are:

SFC adults – Saturday pm;

Alkerton Rangers, teams 1 and 2, adults – Saturday pm (new players welcome);

Woodfield Wanderers (Dursley) - Sunday am.

All play will be subject to pitch conditions and weather.

All the teams listed welcome anyone wishing to join them. SFC Juniors would particularly like to encourage any youngsters from Eastington to come along and speak to the coaches and maybe try out for the club; you would be more than welcome.

If you would like any information about the football played at the ground contact **Martin Elliot on 01453 828712** or anyone on the Eastington Community Centre Committee.

**Gill Glover – OHMGC Secretary.**

**Please note: the OHMGC propose to hold their Annual General Meeting on Wednesday 11th September 2013, Eastington Community Centre, 8pm.**

**Everyone welcome. Please come along, bring your ideas and join the discussion on how we can further improve the grounds.**

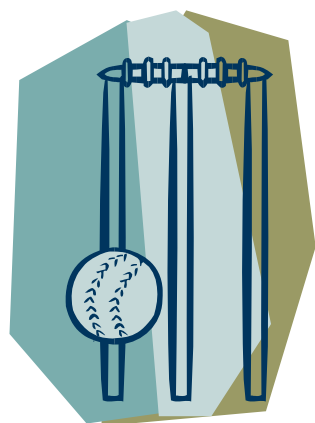
---

## Alkerton Rangers

There has been a breath of fresh air in the Alkerton Rangers camp with the arrival of Kyle Anderton as the new first team boss. With Kev Hill stepping aside to concentrate on playing duties, Kyle has brought a different dynamic to the football club.

Hopes are high for a very successful campaign in Division 6 of the Stroud & District League. Kev Bond will continue to manage the Reserves in Division 8 as they seek to improve significantly on last season's points haul. Training on Wednesdays at the Owen Harris has been very well attended and it is certainly benefitting the players' fitness. As a result there is a fine team spirit within the ranks. Needless to say, to maximise the potential of the club, old and new players are very welcome.

---



## Your cricket club needs you!

If you are over 11 (ideally 14+) and fancy having a game, or you know someone else who might, then please get in contact with us. Test match experience is not required! We have good facilities, games every Saturday in season, and it's not very expensive!

Fixture Sec. Roger Beese      Tel: 01453-823128;      Mobile: **07884438417**

Captain Steve. Gallagher      Tel: 01453-791209;      Mobile: **07836273768**

Secretary Keith Dench      Tel: 01453-764990.

## Village and Community Agent News

### Nuisance telephone calls

We have been repeatedly hearing from many of you about nuisance telephone calls. We realise how disturbing these calls can be.

Research has shown that signing up to the Telephone Preference Service (TPS) cuts the number of cold calls that people receive, on average by one third. Once registered with the TPS, it takes 28 days to become fully effective and the service is free. Please note that registration has to be renewed every 12 months.

By law, UK based companies must not make unsolicited sales and marketing calls to TPS home phone or mobile numbers, even if their call centre is based overseas. Unfortunately TPS will not prevent scams or market research calls from companies based abroad.

**To register with TPS call 0845 0700707.**

Going ex-directory by removing your details from the BT telephone Directory may help to stop some unwanted calls.

There are some telephones available that will display the number of an incoming call, thus enabling you to choose whether to answer or not.

BT now have a telephone available that can block certain types of incoming calls. According to the BT advertising material, the new BT 6500 brings you unique functionality to block up to 80% of nuisance or unwanted calls. Its call management feature puts you back in control by enabling you to choose the calls you want to take and those you want to block. We understand these phones can only be used in conjunction with a BT landline.

**More information can be obtained from BT on 0800 661 441.**

If you have any issues that you would like to discuss or would like an informal chat please contact me **Sue Colquhoun 07810 630 145**. Village and Community Agent are here to provide older people with easier access to information and services.

---

### **Do not become a victim of crime - be safe, be secure- think security!**

Hopefully you are enjoying the sunshine and making the most of being out in your garden, after such a long cold winter. A lot of our time in the summer months is spent in the garden, having a get together enjoying a barbeque or just relaxing.

When the weather is hot like this we tend to open all of the windows to let the fresh air in. When you are in the garden be mindful and *think security* during the hot spell - burglars will be on the lookout for easy targets.

**Please do not leave your windows open or your exterior doors unlocked, especially if you are in the back garden!**

If you would like more crime prevention information on staying safe and secure please contact us:

**Liz Ward, PCSO 49081, Stroud LPA, Gloucestershire Constabulary**

**Stroud Police Station |Parliament Street| Stroud| GL5 1QQ**

**Personal - 01452 753510 | Group - 01452 753510| Contact Centre - 101**

**[www.gloucestershire.police.uk](http://www.gloucestershire.police.uk)**

**Or [Elizabeth.Ward@gloucestershire.pnn.police.uk](mailto:Elizabeth.Ward@gloucestershire.pnn.police.uk)**



## **MOBILITY CORNER**

Peter & Caroline formerly of Homechoice Mobility, are pleased to announce the opening of their new showroom and workshops at:

**UNIT 1A CAMBRIDGE MILL, CAMBRIDGE, GLOUCESTERSHIRE, GL2 7AA  
(NEAR THE GEORGE PUBLIC HOUSE ON THE A38)**

We have many years experience in the mobility industry and can supply a full range of new & pre-owned equipment including Scooters, Wheelchairs, Stairlifts, Access Ramps, Rise & Recline Chairs, Profiling Beds and Bath lifts. We can supply a range of daily living aids, including Reachers, Cushions, Slippers, Pressure Care, Kitchen Ware and a vast range of Incontinence items.

We are the UK Distributor for the Abletripod, a replacement for the ferrule on your walking stick that allows it to stand up leaving your hands free. Our fully equipped workshop can service and repair a range of equipment; we can carry out battery tests, fault diagnosis and pre sale inspections.

**FREE COLLECTION & DELIVERY WITHIN 3 MILES OF OUR LOCATION  
ON ALL WORK THAT CAN'T BE DONE AT HOME.**

**WE OFFER A FREE NO OBLIGATION HOME VISIT SERVICE  
TO ASSESS YOUR NEEDS.**

### **YOUR LOCAL DECOPATCH CRAFT STORE**

You will find a range of crafts and gifts on display, including Decopatch a new paper and glue craft that is taking the craft world by storm. We have a Craft Workshop where you can try Decopatch for yourself, have a children's party or event. We supply everything to do with Decopatch including Papers, Brushes, Glues, and Papier Mache objects to decorate. We decorate real horseshoes, with paper chosen by you, which make wonderful and unique gifts for those special occasions - Weddings, Christenings, Birthdays etc.

We are open Monday & Friday 9am to 5pm  
All other days and times by appointment.

[www.mobilitycorner.co.uk](http://www.mobilitycorner.co.uk) [www.cotswoldcrafts.co.uk](http://www.cotswoldcrafts.co.uk)

Email: [info@mobilitycorner.co.uk](mailto:info@mobilitycorner.co.uk) or [cotswoldcrafts1@hotmail.co.uk](mailto:cotswoldcrafts1@hotmail.co.uk)

**OFFICE 01452 742171; PETER 07811 765257; CAROLINE 07817 900434**

## Wind Power or Photo-voltaic? R E G will have the answer



The Parish Council has had various discussions about using Green Energy to raise money – especially in the light of Government gradually withdrawing the Parish Precept.

Asked the question in the Parish Survey, 172 households voted for a wind turbine and only 37 voted against.

Step forward R E G, Eastington's **Renewable Energy Group**.

Government grants are available but are being scaled back, hence the urgency to implement this Parish Priority. R E G will be chaired by Andrew Niblett who, before his recent retirement, had extensive dealings with Siemens and other key players in the renewable energy arena.

Joining Andrew as founding trustees are Mark Campbell (who writes the weather reports for this newsletter), Paul Mannings, Chartered Quantity Surveyor and Mike Evans who is a project manager in the aerospace industry.

Do you have skills that you could bring to R E G? We would like to hear from you if you have an electronic engineering background or strong knowledge of the various forms of renewable energy. Please ring Andrew on 824841 in the first instance.



ECN will bring you news updates on R E G projects as they emerge. Public Meetings will be called to ensure continued support (including through the Planning Process), to explain costs and benefits and discuss locations. If R E G is a success, you might pay less Council Tax!



### Royal British Legion Poppy Appeal

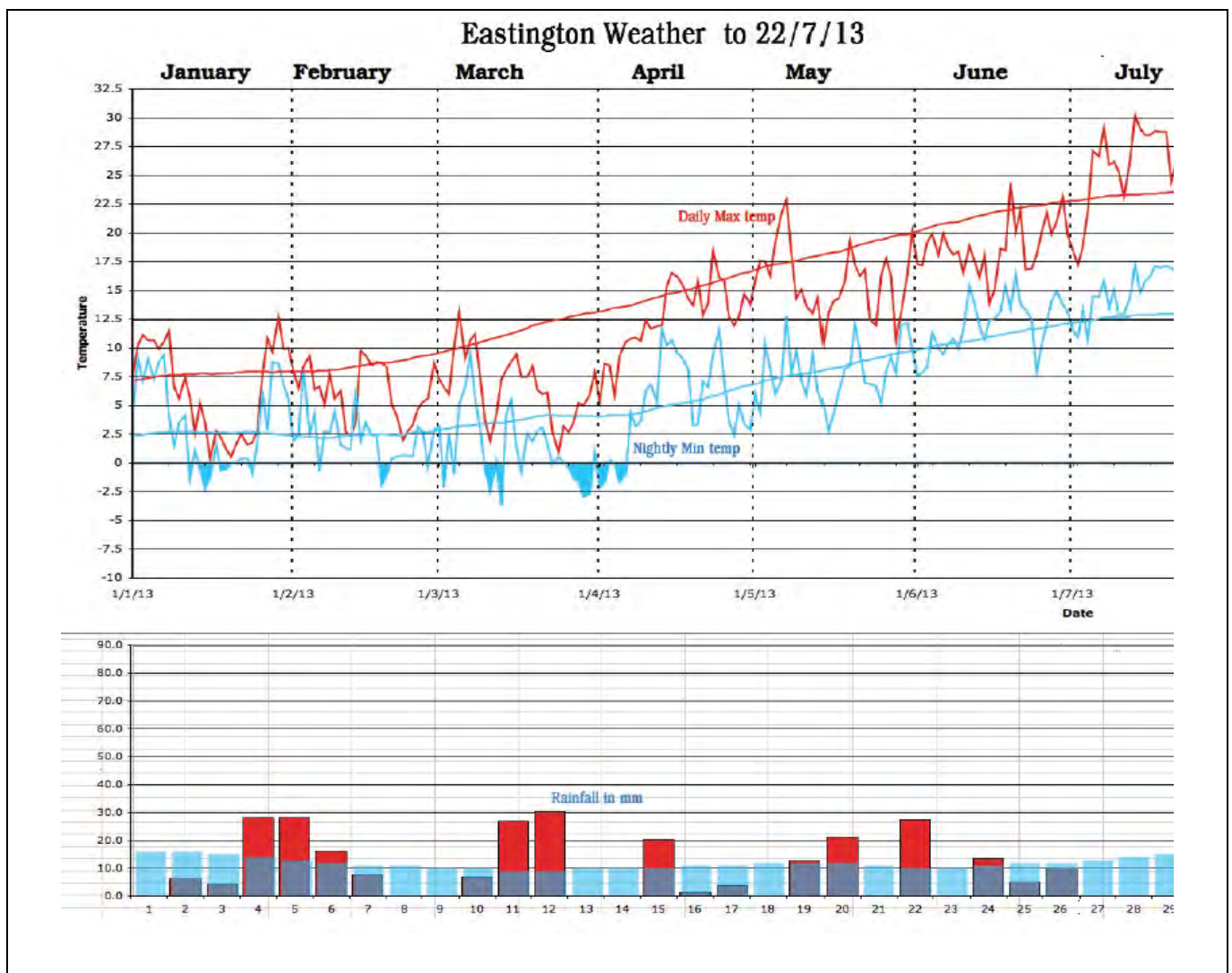
After many years of dedicated service, John Darwent has handed over the role of **Poppy Co-ordinator** for this area to me.

I really want to keep the Poppy Appeal running successfully on our patch, but do need more help. There is a loyal band of supporters who have helped John over the years, but due to ill health the numbers have dwindled.

Would you like to help? I really need more people to help with the door-to-door collections. It will just take a couple hours of your time, and is so worthwhile. I need people in all areas of Eastington and the hamlets.

Please do get in touch with me if you can help.

**Thank you! Kathryn Gribble**  
**Tel: 01453 825279**



Yet another strange and somewhat extreme set of data for the first half of 2013. We had the coolest start to a year since the 1980's with daily maximums well below the average for our area (average curves are shown as smoothed lines). The cold snap in March /April came later than usual.

It is only now, in mid-July, that the daytime maximums have soared above average, peaking at over 30 degrees. Night time temperatures were quite normal all year until recently. Rainfall has been below average (weekly average bars shown in light grey) with only 6 or 7 weeks so far this year showing well above average rainfall. At the time of writing, no rain in July...though thunderstorms are threatened



This photograph of spectacular icicles was taken along the Frocester to Coaley road in early April 2013.

©Daphne Langford

The weather graph and some photos in this and previous newsletters can be seen in colour on our website:  
[www.ecn.me.uk](http://www.ecn.me.uk)

## **Parish bird list (up to July, 2013)**

The list presently stands at an impressive 123. The Parish is, therefore, very rich in recorded bird species – recognised as such by ornithological surveys. Birds can only be added to the list if the particular species has sustained a continuous, viable breeding population in the wild, producing young in a relatively ‘wild’ state. Awkward species such as game birds (eg. Quail) are difficult to list as some are still regularly hand reared and released, whilst the County also has a small, wild breeding population. This is especially relevant to introduced, non-native birds (such as Little Owl/Canada Goose), exotics (Ring-necked Parakeet – although this bird is now firmly on the UK list as a breeding bird) and domestic and collection species (such as Muscovy Duck and Golden Pheasant). Some species can also go ‘under the radar’ and be suppressed as breeding birds. The Eagle Owl is one such bird – though it is difficult to imagine this impressive bird going undetected by anyone! It has been breeding wild in the UK now for some years (definitely not in the Parish!), with a number of pairs’ breeding locations being kept under wraps. Because of its sporadic breeding record, it has not yet been added to the full UK list.

**The Parish List** - I have used Svensson’s nomenclature (as in the latest Collins Bird Guide):

### **Mute Swan**

**Whooper Swan** - (a family party of two adults/two young over in December 2010).

**White-fronted Goose** - (skeins often over as they arrive and depart the Wildfowl & Wetlands Trust at Slimbridge)

**Greylag Goose**

**Canada Goose**

**Shelduck** - (unusual record of a pair flying high over the east meadows)

**Mandarin** - (two records of females with young along the Frome)

**Mallard**

**Teal**

**Garganey** - (two males on the Frome south arm)

**Grey Partridge** - (only one record).

**Red Legged Partridge** - (first record January 2012)

**Common Pheasant**

**Little Grebe**

**Gannet** - (amazing record of a juvenile over Millend heading south west in 2010)

**Cormorant**

**Little Egret**

**Grey Heron**

**Red Kite** - (usually at least one record in the Parish annually)

**Common Buzzard**

**Sparrowhawk**

**Goshawk** - (one chasing and attacking Jackdaws at Millend)

**Kestrel**

**Hobby** - (has possibly bred more than once in the Parish)

**Peregrine Falcon** - (fairly regular sightings)

**Merlin** - (one record of a bird pursuing Meadow Pipits in the east meadows)

**Water Rail** - (best seen in winter using the Frome to migrate)

**Moorhen**

**Coot**

**Common Crane** - (two recent records – latest over Eastington in June 2011)

**Oystercatcher**

**Golden Plover**

**Lapwing**

**Green Sandpiper**

**Common Sandpiper**

**Curlew**

**Whimbrel** - (two recent records of birds passing through)

**Woodcock** - (one feeding on the lawn of No 9 Millend Row last winter!)

### **Common Snipe**

**Jack Snipe** - (one flushed with Common Snipe in the east water meadows)

**Black-headed Gull**

**Herring Gull** - (considered to be one of the County’s rarest breeders)

**Lesser Black-backed Gull**

**Common Gull**

**Mediterranean Gull** - (one feeding with Black Headed Gulls in the east meadows)

**Feral Pigeon**

**Collared Dove**

**Stock Dove**

**Wood Pigeon**

**Turtle Dove**

**Cuckoo**

**Tawny Owl**

**Short-eared Owl** – (flying low over Five Acre Grove, October 2012, then flew high west over Eastington)

**Barn Owl**

**Little Owl** - (bred annually in the old hedges of the east meadows & at Middle Hall)

**Swift**

**Kingfisher**

**Lesser Spotted Woodpecker** - (now a very rare breeder in the County, but bred regularly in the late 80’s, very early 90’s in the grounds of Eastington House)

**Great Spotted Woodpecker**

**Green Woodpecker**

**Wryneck** - (calling only, literally 30ft away but not seen – from willows on the Frome south arm)

**Skylark**

**Sand Martin**

**House Martin**

**Swallow**

**Meadow Pipit** - (over-winters)

**Pied Wagtail/White Wagtail:** White Wagtail is the nominate species and is found over most of continental Europe; Pied Wagtail (*yarrellii*) is the common breeding sub-species in the UK.

**Grey Wagtail**

**Yellow Wagtail**

**Dipper** - (breeds fairly annually in the Parish – best seen when the rivers are low)

**Waxwing** - (a party of seven seen near Millend)

**Duncock**

**Robin**

**Common Redstart** - (often seen passing through on bi-annual passage migration)

**Black Redstart** - (was seen regularly on Spring passage through the derelict buildings at Millend mill)  
**Wheatear** - (often comes to Autumn plough on return migration)  
**Stonechat** - (now rare in the County – but still sometimes seen in Autumn in the Parish)  
**Song Thrush**  
**Mistle Thrush**  
**Blackbird**  
**Redwing**  
**Fieldfare**  
**Blackcap** - (regularly over-winters)  
**Garden Warbler** - (record of a bird watched singing at Churchend nurseries; most recent: Spring 2013 at Millend)  
**Common Whitethroat**  
**Lesser Whitethroat** - (used to breed annually in the old, mature hedges of the east water meadows)  
**Reed Warbler** - (one record of a bird singing on the canal at Newtown)  
**Sedge Warbler** - (has bred on the Frome south arm margins)  
**Grasshopper Warbler** - (one record of a single bird seen singing in the scrub opposite Millend Row in April 2008)  
Willow Warbler  
**Chiff Chaff** - (annual breeder and regularly over-winters along the Frome margins)  
**Yellow-browed Warbler** – (a very rare bird for the Parish - found by Nick Goatman at John Stayte's in 2012)  
**Goldcrest** - (a pair bred at Millend in 2011)  
**Wren**  
**Spotted Flycatcher** - (uncommon breeder in the County now; best record of three pairs breeding in the Parish)  
**Great Tit**  
**Blue Tit**

**Marsh Tit**  
**Coal Tit**  
**Long-tailed Tit**  
**Nuthatch** - (fairly annual breeder in the Parish and regularly over-winters here)  
**Tree Creeper**  
**Magpie**  
**Jackdaw** - (wintering colony at Millend Mill can number 50+)  
**Rook**  
**Carrion Crow**  
**Raven** - (increasingly evident)  
**Jay**  
**Starling**  
**House Sparrow** - (appear to be good numbers in the Parish of this Red Listed species)  
**Chaffinch**  
**Goldfinch**  
**Greenfinch**  
**Brambling**- (winter only, occasionally on feeders at Millend)  
**Siskin**  
**Lesser Redpoll**  
**Linnet**  
**Bullfinch**  
**Hawfinch** - (one late winter bird flushed by shotguns with Redwings, from the grounds of Eastington Park)  
**Crossbill** - (very unusual record - a family party of six alighted briefly in the tops of willows along the Frome south arm; and a party of ten over Millend 09/11/11).  
**Reed Bunting** - (used to breed regularly along the Frome south arm margins)  
**Yellow Hammer**

There are also un-confirmed records of Bee Eater and Osprey, and an old record of a male Golden Oriole at French Gardens and one definitely calling (but not seen) in willows at the confluence of the Stroudwater canal/river Frome near Wheatenhurst (outside the Parish). Escaped exotics such as Cockatiel and Budgerigar, are quite often seen in the Parish, but are quickly killed by the local corvids.

## THE JOYS OF WALKING

In the middle of June during the mid-morning, I was walking with my dog through the fields on Farmer Cozens' land, when a huge flock of Rooks and Crows took flight as I approached. I saw two birds still on the ground and I thought that perhaps they were dead, so I went over to them for a closer look.

I stood with my foot almost touching a young Rook..... he was fast asleep!! He became aware of my presence, gave me a startled look, and flew off. I went over to the other bird, and again, my foot almost touching him. He didn't move! His head was tucked over his shoulder and onto his wing and a light blue cover over his eye.

I stood in amazement at this little bird as he was fast asleep, and I felt extremely privileged to be sharing his space. I said, in a soft voice, "I don't think you should be here Mr Rook ". He didn't move!! I repeated my comment. He opened his eye, gave me a quizzical look, realized that something wasn't quite right, looked around for his 'pals'..... then flew off to join them!!

The whole experience was amazing, and humorous.

I walked on, into a field where the cows were lying down, chewing their cud and relaxing. A couple of the cows were sleeping. One of them was stretched out, with her head resting on her shoulder. She was so fast asleep that she must have been dreaming as her feet were twitching, as if she was running, and her mouth and eyes were also rhythmically moving!! It was fascinating to just stand and watch her. I stood by her about a minute; even my dog was a bit puzzled by it all!!! We walked on.

It just seems that we *all* need our sleep..... even young Rooks and Cows!

It was a wonderful experience - you never know what you might see when you're out walking.

**Bill Edwards**

## Questions: What did insects ever do for us?

### 1. When did you last see a ladybird?



Everyone knows the ladybird. They used to hibernate in my window frames in vast numbers, but not last winter – I haven't seen one for ages. Do you recognise their larvae? Fearsome-looking, but quite harmless, and *so good* to have in our gardens because they munch their way through thousands of aphids - greenfly, blackfly – before they metamorphose into those pretty little red or yellow beetles spotted with black.

Our Eastington Allotments Society correspondent, Stephen G, said in ECN June/July 2012: "...in anticipation of a sudden influx of pesky aphids due to this warmer weather, please look after and nurture your *Coccinellidae* (i.e. ladybirds, one shown here in larval form)." But have you seen one recently?

### 2. Do you think there are fewer butterflies this year?

Butterflies brighten my life (and yours too, I hope). After a poor spring and early summer, the recent heat wave has, at last, brought some into the garden and along the hedgerows they're busy supping bramble nectar.

You might not be delighted if your cabbages are being devoured by cabbage white caterpillars, however. You could spray, but better to pick them off your crops. Most species of butterfly caterpillars are not interested in your brassicas. Four of our most colourful, the peacock (spiky black caterpillars shown right), tortoiseshell, red admiral and comma, lay their eggs on nettles, the food plant of their larvae. So, a few of nettles left in your garden is not necessarily a bad thing! Now there's an excuse...



If you feel like helping to monitor our Nation's butterflies, you can take part in the **Big Butterfly Count**, which is currently under way. Lots of lovely things to see on this website: <http://butterfly-conservation.org/4291/big-butterfly-count-2013.html>

You are less likely to have noticed that moth numbers have fallen, but I have it on good authority that this is so, from our 'Birder in the Parish', who sometimes sets a moth trap overnight. On the colour page, see two night-flying species of hawk moth, which were trapped, photographed and released by 'Birder' last week. As well as their larvae (caterpillars), which are food for some birds, adult moths are food for those other night-flyers, the bats.

The black and red 6-spot burnet moth on the orchid is a day-flying species. These lay their eggs on bird's-foot trefoil and the caterpillars pupate on grass stems. A stronghold and breeding ground of these moths, and the pyramidal orchids upon which this one is feeding, is our traffic island at Chipman's Platt. Unfortunately, untimely mowing too early in the year put paid to both moths and orchids there this year.

### 3. What about bees? (An account from one of several beekeepers in the Parish)

It's not been a good year for many bees and their keepers, with losses of up to 50% reported in the South West (including Gloucestershire). It was a combination of a long cold winter off the back of a poor summer in 2012.

But it's not all bad news. Some bees have done well and made an impact on their locality. Take the bee hives in Millend for example. One colony in 2013 grew sufficiently to split into two ... and the bees have been very busy since summer finally arrived. In the last three weeks alone they've created over 15 pounds of honey and the two queens are busy laying eggs for the next generation of workers. Last year also produced a good quantity of honey.

They can't do it on their own of course. Bees need to be looked after and helped to combat the varroa mite which, ultimately, will destroy a colony. They need to be left enough food to get them through the winter; in Millend that means not taking all the honey away. In other places they are given alternative food to make it through.

So do the bees make a difference? Well last year was also a bad year locally for apples with many trees not bearing fruit. The apples just weren't pollinated. At Millend however the apple trees did well and, as mentioned above, the bees made honey. The local bees could make the short distances from hive to trees in the gaps between the rain. That's not scientific. But it adds up.

Finally, one small word of warning. The bees are usually FAR too busy to bother you. They will usually leave humans well alone. But do remember that, if you see a hive, there could be TEN THOUSAND bees (or more) in there. They WILL bother you if you get up really close and they start to feel threatened. That's why the beekeepers wear those special suits!

**Bee facts:** It takes the nectar from a million flowers to produce a pound of honey. Bees can forage up to four miles from their hive if they need to and the weather conditions are right.



*Poplar Hawk Moth*



*Elephant Hawk-moth*



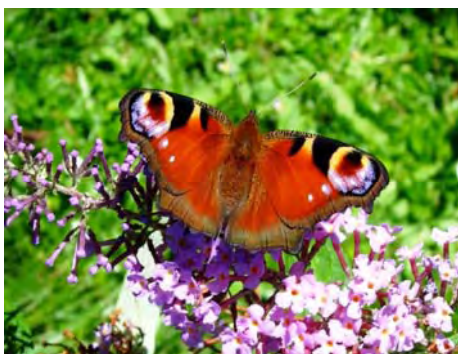
*6-spot Burnet moth on  
Pyramidal orchid*



*Heather and Sophie Jones check  
The Millend bees.*



*The fruits of the labours of the Orchard Group, the Allotmenters and the Bees*



*Photos by Jake King, Mark Jones, Stephen Gribble, Val Taylor*

## Eastington Primary School Duck Race and Summer Fete 2013



Great fun and games were had by all at the Duck Race and Summer Fete and well done the PTA for organising such brilliant sunshine! The school is extremely grateful for all the local support, which generated just over £2000 profit on the day. This is to be spent on a new phonic reading scheme for the children. 'A big THANK YOU to everyone who enjoyed the afternoon....a real village/school event!'



Mrs Marion Alder won the Eastington Bake-Off. Her grandson Thomas goes to Eastington School.



Spiderman flew a Harris Hawk, courtesy of John Dowling Falconry Ltd.

## How to gather Blackberries without breaking your back: The wheelbarrow method

Getting up close to blackcurrants (or redcurrants or gooseberries) can be hard work, as Yakob shows very clearly here.

The clue to keeping this pain to a minimum is in the foreground – the wheelbarrow!

If you chop out the fruiting stems, and trim off the top growth, you can stack the fruit-laden sticks in your barrow. DON'T try picking the currants off the bush, that way lies backache for a week!



The result of the wheelbarrow method is a double bonus ...



...the bushes are now  
pruned ready for winter

>>>>>>>>

**and** you can sit on your  
rear end, plucking the  
currants off at your  
leisure.

<<<<<<<<<

(at home, you can sit on  
the patio with a wee glass  
to aid the picking process)

In Churchend Community  
Orchard, we picked 20  
kilos of currants from the  
early summer variety,



“Ben Connan”, with the late summer “Ben Alder” to come in the middle of August. So, quite a few jars of jam to be shared between the workers – each according to his or her input over the year.

**If you would like to join ECO, the Eastington Community Orchards Group, and enjoy the fruits of your labours, ring Tom on 823425.**



### Thank you for Award Success

This is a note to thank all of you from all of us up the road at Highfield Garden World. We've just won the Business of the Year award at the Stroud Life Business Awards, as well as winning our category of Family Business of the Year, and we couldn't have done any of that without you and your support.

Over the last 27 years, the people living in our gorgeous surrounding villages have not only come and bought our products, but they've also provided us with most of our super staff!

We hope to continue to employ and serve the local community for many happy years to come.

**From all the Greenways and the rest of the team at Highfield Garden World**

# The Eastington Allotments Society

I will start this piece with the same caveat that I used in the last edition, which is, that this was written two weeks ago....so here goes (with apologies to all holidaymakers).....*we could do with a drop of rain.* The veggie plants are starting to look a bit stressed but are still managing to hang on in there.....apart, that is, for the ones where the ground has opened up below them. I've already lost a few dozen blackcurrants, a couple of runner beans and a courgette down some of these ever increasing chasms, so pick your produce with sure hands everyone. The good news is that I have just heard we will be getting a decent downpour in the next couple of days... (again, sorry holidaymakers) which means I will not be needing to use a pickaxe to plant out (long overdue) my purple sprouting broccoli.

Bees..... It is possible that you may have noticed a bee thread running through this edition and it is probably fair to say that there is concern, not just locally, but countrywide about the plight of bees and other pollinators. It may be a bit early to start thinking about next year's planting plans but in preparation for that time I would encourage everyone to look around their allotments and think about where they might be able to tuck in some flowering plants amongst the veggies. Not only would this help to maintain a healthy bee population, but the right selection of plants could also attract other useful predator insects....and they look pretty, too.

I, and others, shall no doubt be coming back to this in future editions, with plant suggestions and where allotment holders might acquire them.....a possible use for the proposed new polytunnel, perhaps?

Finally, there are some new and recently vacated plots still available, As mentioned above there is still time to get started and produce some excellent crops of veggies this year. If you are interested please visit the Allotments page on the Eastington Parish Council web site or **phone Muriel Bullock on 01453 826172, or Sarah Underdown on 01453 823285**

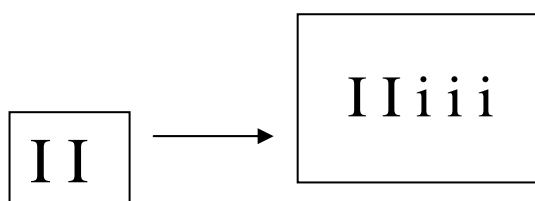
## Might YOU be needing a house within 5 years? We are planning for Eastington, please tell us

### Housing Needs Survey 2013

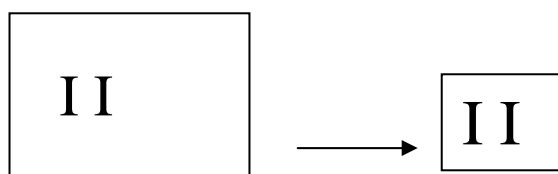
The Parish Council has been circulating these forms to find out the overall need for housing (they are yellow with four pages).

Depending on the results, we will use a Community Land Trust to plan and build suitable homes, to rent or to buy, over the next 15 years

So if you are a family expecting to grow...



...or a couple wanting to downsize...



...please fill in your form (if you still have it) and post it to GRCC (our independent assessors) in the freepost envelope that came with the form. If you have lost your form or envelope, just ring Jill Simmons on 825303 for replacements.

The form is titled 'Eastington Parish Housing Needs Survey'. It includes a list of questions: 'Teenagers growing up?', 'Family expanding?', 'Wanting to downsize?', 'Need to be closer to family?', and 'Just want to move house?'. Below these is a section 'IF SO - WE NEED TO HEAR FROM YOU' with a paragraph explaining the survey's purpose. It then provides 'INSTRUCTIONS FOR COMPLETING THIS FORM', including 'Section A - Complete if you might be vacating your home in Eastington within the next five years.' and 'Section B - If you, any members of your household, or family from outside the parish might be looking for a new home in Eastington within five years then please fill in one copy of section B for each new home that might be required.' It also includes a note about using unwanted forms and a phone number for the parish council representative. A section 'Section A: YOUR CURRENT HOME' is highlighted, with a note to 'Please only complete this section if you MIGHT be vacating your home in Eastington within five years.' It contains fields for 'A1 Postcode' and 'A2 Type of dwelling (Tick one box only)', with options for detached, semi-detached, terraced, bungalow, ground floor flat/apartment, upstairs flat/apartment, and caravan. There is also a field for 'Other, please specify:'.

# EASTINGTON HORSE SHOW



*Saturday 3<sup>rd</sup> August 2013*

**NEW VENUE:**  
**Off the A419 East of M5 Junction 13**

(Nearest Post Code is GL10 3SQ (Between Little Chef Roundabout and M5))

**By kind permission of Mrs Carol Prentice and Mr Barrie Yeates**

**Dressage, Show jumping, Showing, Gymkhana & Fancy Dress Classes**

**Let's keep the spirit of that 'Vibrant Village of the Year' alive!**  
**Support your own Horse Show. It's run entirely by volunteers. Bring your family for a great day out. Meet with friends and neighbours.**  
**All proceeds go to worthwhile local causes.**

---

## **Hair & Beauty House**

**Under new management since July 2012**

**Come along and indulge yourself in the greatest out of town hair and beauty experience.**

- Professional hairdressing and barber services
- Complimentary consultations including colour analysis using colour capes
- Great lengths hair extensions
- Tigi, Redken and Moroccan oil hair care
- A full range of beauty treatments including, facials, massage, waxing, spray tanning, minx and shellac (the 14 day must have manicure)
- Late appointments available
- Gift certificates
- High level of customer service delivered in relaxed and welcoming environment
- A refreshment menu to die for

**Bring this advert with you and enjoy a £5 discount on a service priced at £10 or over.**

**The Cross, Eastington T:01453 791251**

# Eastington Methodist Church



The EMC Friday Youth Club celebrated the school break up for the summer holidays with a mammoth water slide followed by hot dogs and beefburgers. Those who have just left primary school and will be starting secondary school in September are now old enough to start coming along from 7:00 – 9:00pm on Fridays. The cost is 75p per session, which includes a free drink, and there is a tuck shop. Our hope is to run right through the summer holidays but that will depend on sufficient leaders being available.

We will be organising one or two outings over the summer and later in the year there is the Methodist District Youth Weekend on Friday 4<sup>th</sup> – Sunday 6<sup>th</sup> October. These are good fun and we hope a good sized group will want to go this time.

Kidzone, for primary school age children aged 7 and above, does stop over the summer holidays and will resume on September 4<sup>th</sup>.

Meanwhile, at the church, we will be saying goodbye to Rev Noel Sharp this summer. He has been our minister for the last five years and has served our church well - we will miss him. Noel is being replaced by Rev Graham Miles who, in addition to his main church at Churchdown, will also be taking responsibility for Stonehouse and Quedgeley Methodist Churches. We will also be saying goodbye to Matt Gatt who has been the Assistant Youth Worker for the last year and we thank him for the work he has undertaken over the last year or so. His move follows the completion of his music studies at Stroud College and we pray that God will bless him into the future. Matt's musical skills will also be missed and will leave quite a gap in the music group for others to fill.

In conjunction with Graham's appointment, EMC will be getting a half time Lay Worker to assist in the work and witness of the church here. Meetings are just starting to define the job specification but the amount of interaction the church has with children and young people suggests that they will need to have this as an area of strength.

So this year feels very much like stopping at a railway station. Some people get off and others get on before the train moves off again. At this time of transition, we look forward to seeing where God will take the church next and to meeting the new people who will be part of that journey; whether they be filling key roles or part of the congregation that meets together week by week.

Ken Burgin – Senior Steward

**Ken & Beck Burgin 01453 827414**

[www.EastingtonMethodists.org.uk](http://www.EastingtonMethodists.org.uk)

## Eastington Baby and Toddler Group @ Eastington Methodist Church

Eastington Baby and Toddler Group is continuing to meet, on Mondays, throughout the Summer Holidays, apart from Monday 26<sup>th</sup> August. We will be starting at 10 am, as usual, but finishing at 12 noon. The sessions are open to those from 0 to 3 years old, and older brothers and sisters can come too.

The theme over the summer is space, and we will be making a large picture, including stars and rockets, as well as sharing picnic lunches. There will be sand and water play, as well as song and dance.

The group will restart on Monday 2<sup>nd</sup> September at 10am til 11:30am. If you haven't come before and have children between 0 and 3 years old, please feel free to join us.

**For further information please contact Beck Burgin on 07511197265.**

## Exciting milestone in the “Youth Park” project

We have had a really great couple of months on the Park project with things getting off to a flying start.

The Park will be next to the Allotments on part of the two acres of land wholly owned and governed by Eastington Parish Council.

Over two parish council meetings we have been able to secure a contribution of £15,000, use of the land for 30 years and an ongoing commitment providing financial support for maintenance.

This gives us a fantastic start and will be key in helping us move forward with the project, so we'd like to thank the Parish Council for all their support.

We are just waiting for the final quote to be received and we will be able to choose a supplier and finalise the design.

In order to keep costs low we have been looking at the use of some recycled and alternative materials to be used alongside traditional playground equipment (tractor tyre or willow anyone?). This is going to take some creative thinking and some skill so we will be looking for volunteers to help with everything from fencing and woodwork to planting and tea making.

This will be a great way to get involved with the project and you would be welcome to commit for the whole project or just pop up for the afternoon. If you might be interested please keep in touch with us via our facebook page [www.facebook.com/Eastington.playground.project](http://www.facebook.com/Eastington.playground.project) or by emailing [Eastington.yg@gmail.com](mailto:Eastington.yg@gmail.com)

If you registered your interest in volunteering at the public consultation in May, then we will be in touch with you soon.

In the meantime we will be continuing to seek out funding, working on the design and finalising the budget, hopefully we will have some more exciting news soon.....





## Our Church needs your support

Over the past 50 years funding parish clergy has changed completely.

In 1963 the Church Commissioners would help provide funding for parish clergy - these days the contribution has stopped. The only support we receive from governing bodies is from the government, via gift aid, which we get from the initial donations.

Our church heavily relies on regular donations to keep our services running.

At present our church running costs are £1,187.44 per month, and these costs only include Gas, water, electricity, insurance and our Parish Share (Parish share is our contribution towards the cost of having a clergy to conduct services and, even though this cost is spread across six churches, we still fall short on the full amount payable).

With our slowly declining attendance, our donations also slowly decline and the decrease in couples choosing to have wedding services at church have dramatically reduced our income. I am sure you are all aware that the cost of living is increasingly expensive; the church also endeavours to cover the rise of running costs. There are many other costs such as administration, service leaflets, flowers, hymn books, maintenance, candles, the list goes on. We are struggling to match the increase in costs with income. At the end of the last financial year we finished with a deficit of £4,921. If this trend continues the church will become unaffordable to run, which will inevitably result in its closure.

Which is why I am asking if you can help support your local church, so that we can keep services running for years to come. We have signed up to a Parish Giving Scheme with our diocese, which enables us to recover gift aid quicker and provides a direct debit system. If you feel you would like to give to our church to help with our running costs please contact me, **Ian Hodges** at [ian.hodges@talktalk.net](mailto:ian.hodges@talktalk.net) or write to me at **Lawrence Way, Bath Road, Eastington, Stonehouse, GL10 3AX.**

You may be aware of our *Friends of St Michael's*, which we have set up to raise funds for the church building. There are maintenance repairs that need doing within the next five years and, being a listed building, the costs amount above £100,000. All monies given to the *Friends of St Michael's* are restricted to the fabric of the building and cannot be used for running or other costs. Both causes are equally important to continue to provide our services for the community.

No contribution is too small. Please give.

***Ian Hodges – church treasurer.***



The name Allsorts seems to capture exactly who we are - allsorts of children, allsorts of grown ups and most of all allsorts of activities and events. Based in the Stroud Valleys and covering the whole of Gloucestershire, we welcome any family with a child or young person with additional needs or disabilities, with or without a diagnosis.

We provide a wide range of activities and services for all family members including family outings, youth clubs, specialist toy library, trips for siblings and support for parents.

Please check out our website at [www.allsortsglos.org.uk](http://www.allsortsglos.org.uk) or find us on facebook to find out more about what's on offer. Email [info@allsortsglos.org.uk](mailto:info@allsortsglos.org.uk) or ring **Sheila** (parent & carer support coordinator) on **07794009663** who will be happy to chat to you about Allsorts and your family.

## ACUPUNCTURE

Safe & Professional Treatment for

Joint & Muscle Pain  
Sports Injury  
Emotional Health  
Digestive Complaints



CNHC Trusted and Supported by  
the Department of Health

Stonehouse Holistic Centre  
& Medical Clinic

12 Queens Rd, Stonehouse, Glos

Discover client testimonials at  
[www.stonehouseholistic.co.uk](http://www.stonehouseholistic.co.uk)

Call 01453 828000

# Tai Chi Qigong

## "Just what the Doctor ordered"

Health & Energy Classes. Suitable for all shapes, sizes, young and old! Join the fun and learn new skills for greater health and longevity. Simple and easy to learn movements.

Tues 7.00-8.00pm Eastington

**£6.00 Per Session**

Thurs 11.30am-12.30pm Stonehouse

Please call **01453 828000**

Fri 12.00pm - 1.00pm Eastington

prior to attending a class.

visit [www.energyhealth.co.uk](http://www.energyhealth.co.uk) for more info

## Nikki's Green Fingers

Garden Maintenance



Mobile: 07872 452 489

All types of gardening work  
including mowing, weeding, planting, pruning..



## Pressed 2 Perfection

The premier ironing service

- ✓ Free pick up & delivery
- ✓ Special rates for B&Bs and holiday cottages
- ✓ Over 7 years experience

**Viki: 07976 400139**

[info@pressed2perfection.com](mailto:info@pressed2perfection.com)

Call in the perfect solution!

[www.pressed2perfection.com](http://www.pressed2perfection.com)

## PAT-A-PET



Pet Care Services

Dog Walking & Pet Care at your Home

LOCAL, RELIABLE, FRIENDLY  
SERVICE

Call Gill on 0740 7636657



## Natural Artlines

Freelance Design

### STARTING UP A NEW BUSINESS

OR JUST LOOKING AT WAYS OF MARKETING YOUR BUSINESS  
then look no further

Visit [www.naturalartlines.co.uk](http://www.naturalartlines.co.uk) [info@naturalartlines.co.uk](mailto:info@naturalartlines.co.uk)

- Client Branding • Print design - brochures, copy-writing, corporate presentations, annual reports, all stationery • Website & interactive media design
- POS Design • Illustration & original artwork
- Product design that sells

**SOUND GOOD TO YOU? Great!**  
**then call 01452 741413**

Newgate Studio, Claypits, Eastington, Gloucestershire, GL10 3AJ

## COMPLEMENTARY THERAPY

In the comfort of your own home  
Mobile Complementary Therapist offering

Reflexology, Aromatherapy and Reiki

6 years experience in a hospice

Working with patients carers and bereaved

For advice and appointments please call

Anita Harland 07977 137955



## ***Martin Pollard Bodyshops***

**Your local accident repair centre**

**01452 740025**

*Free estimates Free Courtesy Cars supplied  
Car & Light Commercial Repairs/ Refinishing  
Computerised 4 Wheel Alignment System  
No job too large or small!*

Telephone or call in at Unit 9, Frampton-on-Severn Industrial Park, GL2 7HE

**10% Discount with this voucher !!**  
*voucher must be presented at time of estimate and  
applies to labour and materials only and is  
not applicable on previously discounted prices*

E mail: [Martinpollard@hotmail.co.uk](mailto:Martinpollard@hotmail.co.uk)

dental  
practice

townes  
townes  
associates



[www.familysmiles.co.uk](http://www.familysmiles.co.uk)

*Family Dentistry You Can Rely On*

**Satisfaction  
rating:  
more than 99%**

100% of patients  
asked would  
recommend  
us to family &  
friends

Quote 'ECN' to get a 50% discount on a full New Patient Examination with x-rays for just £39.50. Telephone us on **01453 827474**

**ATTWOOLLS**  
Camping & Ski



Dome Tents, Frame Tents, Party Tents,  
Shelters & Gazebos, Accessories,  
Outdoor Clothing & Boots  
All at great prices

[www.attwoolls.co.uk](http://www.attwoolls.co.uk)

Skis, Ski Boots, Ski Clothing to hire or buy

A38 Bristol Road  
Whitminster, GL2 7LX

**01452 742233**

Open 7 days  
Mon-Sat: 9-5.30  
Sun: 10-4.00

**G & R WATSON Est. 1980**

Iphe Registered Plumber

GENERAL & SMALL PLUMBING WORK

Bathroom & Kitchen Installations

Domestic & Commercial maintenance

Friendly reliable service – Competitive rates

**Call Chris 07836264583**

**01453824395**

[watsonson@elmcrofthouse.freemove.co.uk](mailto:watsonson@elmcrofthouse.freemove.co.uk)

# **The 31st Eastington Autumn Flower Show**

**OPEN TO ALL RESIDENTS AND MEMBERS OF ORGANISATIONS IN THE PARISH OF EASTINGTON**

**To be Held in the Village Hall, Saturday 7th September 2013**

**2pm - 3.30pm, Admission 20p**

## **RULES**

- (1) The hall will be open to exhibitors from 9am on the morning of the show. All exhibits must be staged by 11am at which time all exhibitors must leave the hall. Presentation of trophies at 3.30pm - no exhibit to be removed before 3.30pm.
- (2) Exhibitors' cards corresponding to the entries will be handed to exhibitors by the show secretary and exhibitors will be responsible for the proper placing of their cards with their exhibits. An exhibitor may only enter one exhibit per class. Each exhibitor using separate entry form.
- (3) Exhibitors must provide their own bowls, vases etc for display of their exhibit. All exhibits entered must be staged.
- (4) The judges may modify or withhold any award if the exhibits do not merit the prizes offered.
- (5) Any unfair means to obtain a prize will forfeit all claims to prizes.
- (6) The judge's decision is final.
- (7) The committee cannot accept any responsibility for loss or damage to any exhibit or accessories to an exhibit. It reserves the right to move any exhibit to assist display.

**CLOSING DATE FOR ENTRIES 11am, 7th September 2013**

## **SHOW SPONSORS**

Classes 23-26 sponsored by: R & C Harris

Classes 27-36 sponsored by: KB Coaches, Eastington Tel: 01453 8225774

Classes 43-53 sponsored by: R & C Harris

Section E & Classes 59-60 sponsored by: Mrs Q Jones

Classes 1-6 sponsored by: R U Electrical Services, Eastington. Tel: 01453 823285

Classes 7-11B sponsored by: Mr W Fletcher

Class 12 & 22 A & B sponsored by: Borders, Lawns and Trees Garden Maintenance.

Classes 13-17 sponsored by: Mrs R Barnfield

Classes 18-22 sponsored by: Alkerton Draughting Services Tel: 01453 822862

Classes 37-42A sponsored by: Mr & Mrs J Underwood

## **TROPHIES**

Stroud Building Society Perpetual Challenge Cup to the exhibitor obtaining the most points in the show.

President's Perpetual Challenge Cup to the exhibitor obtaining the most points in Section C.

Trophy to runner up for President's cup.

Presidents Rose Bowl to the lady exhibitor obtaining the most points in the show.

Trophy to the runner up for the Rose Bowl.

Dr R R Wethered Shield for the best exhibit in Class 35.

The Bill Fletcher Shield for the most points in Section C.

Perpetual Trophy for the most points in Section D.

Perpetual Trophy for the most points in Class 55.

The Neal Perpetual Trophy for the best exhibit in children's Class 56.

Joan Parkes Trophy for the best exhibit in Section F.

The Parish Council Trophy for best exhibit in Class 57.

The Moss Trophy for the best exhibit in Class 58.

Mr & Mrs J Underwood Trophy for the most points in Classes 37 - 42A

J Bridges Perpetual Trophy for most points in Classes 6, 7, 9-11B

The Chris Haines Memorial for best Orchid in Show, Class 42A

Best Runner Bean sponsored by Borders Lawns and Trees Garden Maintenance, Class 12.

**In the event of a tie, trophies will be awarded to the person obtaining the highest number of firsts.**

<p style="text-align: center;"><b>Section A</b></p> <p><b>CLASS</b></p> <p>(1) Potatoes - Kidney, Oval or Round, White - 4  (2) Potatoes - Kidney, Oval or Round, Red - 4  (3) Carrots - Long - 4  (4) Carrots - Short - 4  (5) Beet - Round - 3  (6) Onions - Spring Sown Flat - 4  (7) Onions - Spring Sown Globe - 4  (8) Peppers - 2  (9) Shallots - Large - 8  (10) Shallots - Pickling under 1" - 8  (11a) Onions - Large Dressed - 4  (11b) Onions - Red - 4  (12) Runner Beans - 6  (13) Table Marrows - Any Size - pair  (14) Plate of 6 mixed tomatoes  (15) Cabbages - 2  (16) Tomatoes - Outdoor Grown - Red - 6  (17) Tomatoes - Outdoor Grown - Green - 6  (18) Tomatoes - Greenhouse - Red - 6  (19) Cherry Tomatoes - Greenhouse - Red - 6  (20) Cucumber - Ridge - 2  (21) Cucumber - Telegraph - 2  (22) Courgette, under 6" - 2  (22A) Collection of vegetables - see rules below  (22B) Children's Collection of Vegetables  (Up to 16 years) - see rules to right.</p>	<p style="text-align: center;"><b>Section A cont.</b></p> <p><b>Collection of vegetable rules:</b>  1 – Vegetables to be shown in standard size seed tray  2 – Pick 3 from the following vegetables:  Potatoes(3), Carrots(3), Runner Beans (6),  Tomatoes(3), Onions (3)  3 – Make sure you have the right quantity of each vegetable  4 – Parsley &amp; raffia may be used to assist your display  5 – Carrots to be trimmed to 2 inches  6 – Larger trays or wrong amount of vegetables will be disqualified  7 – The judge's decision is final</p>
	<p style="text-align: center;"><b>Section B</b></p> <p>(23) Pears - 4  (24) Cooking Apples - 4  (25) Dessert Apples - 4  (26) Plums - 4</p>
<p style="text-align: center;"><b>Section C</b></p> <p>(27) Asters, Blooms in vase - 6  (28) Chrysanthemums, Any variety, Blooms -4  (29) Chrysanthemums, Any variety, Spray -1  (30) Dahlias, Pom Pom, Blooms - 4  (31) Dahlias, Decorative, Blooms - 4  (32) Dahlias, Cacti, Blooms - 4  (33) Gladioli - Spikes - 3  (34) Gladioli - Spike - 1  (35) Roses, Blooms - 4  (36) Rose, Bloom - 1  (37) Vase of cut mixed flowers, Quality of flowers only will be judged  (38) Spray of Floribunda or Polyanthus Roses  (39) Ladies Wedding Spray  (40) Pot plant for flower  (41) Pot Cacti  (42) Pot Succulent  (42A) Pot Orchid</p>	<p style="text-align: center;"><b>Section D</b></p> <p>(43) Home made Chutney - Pot  (44) Home made Lemon Curd  (45) Home made Jam - Pot of soft fruit  (46) Home made Jam - Pot Stone fruit  (47) One small pot - Any Jelly  (48) Scones - Any variety - 4  (49) Small Tarts, Jam, open - 4  (50) Home made loaf, White using 1lb of Flour - 1  (51) Home made loaf, Brown using 1lb of flour - 1  (52) Victoria Sponge, 7" round - 3 eggs with their weight in fat, flour &amp; castor sugar  (52a) Cake made with vegetable i.e. carrot, beetroot, courgette. Decoration optional.  (53) Fruit Cake, 7" round, deep tin, 6oz margarine, 5oz sugar, 3 eggs, 9ozs self raising flour, 10oz mixed fruit ( incl. Cherries), 1 teaspoon salt, ½ teaspoon almond essence, 1 level teaspoon mixed spice, little milk.</p>
<p><b>Section E – Children's Classes - Up to 16 years.</b>  (54) A picture coloured to your choice (Available from the Village post office to colour during the summer holidays). Please write name and age on the back.  (55) Animal made out of fruit or vegetables  (56) A piece of jewellery made to your own design  (57) Decorate a pebble (own design and choice of materials)  (58) Fairy Cakes - decorated to your choice – 4</p>	<p style="text-align: center;"><b>Section F - Fun Section</b></p> <p>(59) Longest Runner Bean  (60) Any other comical vegetable</p>



## ENTRY FORM FOR EXHIBITOR

Entry forms to be sent, together with entry fees, 20p each class (except 54 – 58, & 22B, which are free) to the show secretary, or handed to any committee member.

Additional entry forms available from the show secretary.

### Hints to exhibitors:

**Read the schedule carefully and be sure that you enter the correct number of specimens in each class. Prize money to be collected on the day of the show.**

**Closing date for entries 11am, 7th September 2013**

CLASS NUMBER	CLASS NUMBER	CLASS NUMBER
--------------	--------------	--------------

I HEREBY CERTIFY that all the articles referred to have been produced by me in my own garden or allotment, or made by me.

Exhibitors Name:-----

Address:-----

Total remittance:-----

PRESIDENT:	Lt. Cdr. W. R. Harris
CHAIRPERSON:	Mr D Haines
TREASURER:	Mr W Fletcher Tel: 01453 828507
SECRETARY:	Mrs S Underdown 3 Middlecroft, Eastington, GL10 3SG. Tel: 01453 823285
STEWARD:	Mrs Q Jones
AWARDS:	1 <sup>st</sup> - 25p 2 <sup>nd</sup> - 20p 3 <sup>rd</sup> - 15p
POINTS:	3            2            1

**THE COMMITTEE THANK YOU FOR YOUR SUPPORT**