

The desire of some local planners to urbanise Eastington has been discussed previously, along with some developers determination to make a fast fortune by building wherever they choose. By now you will be aware of the importance of preparing a Neighbourhood Development Plan (NDP) to represent the needs and values of our own community. In the past few weeks you should have received a questionnaire to gather your opinions about the future of Eastington. Most people have already returned the paper or on-line questionnaire at [www.eastingtonndp.co.uk](http://www.eastingtonndp.co.uk). There's plenty of space to add things important to you and to explain your concerns and to say what should happen and where. The views of every person in your home should be given, and because this is important, the deadline for return of questionnaires has been extended to Tuesday 7<sup>th</sup> October.

Inside is a progress update for the 'Eastington Neighbourhood Development Plan' by Cllr. Edis-Bates, and we hear about some recent planning applications and a less bumpy form of traffic calming called 'E.A.R.S.' from the Parish Council. We also have a report from County Councillor, Cllr. Lesley Williams and letter from District Councillor Cllr. Ken Stevens. A review of the situation following the Examination in Public of Stroud District 'Local Plan' is presented by Daniel James for 'Don't Strangle Stroud,' and he explains what can be done and how you might help.

A reminder about the value of a Community Land Trust (CLT) in providing homes for local people is included. Hear about how other local communities have set up CLTs to delivered affordable housing, on Tuesday 21st October at 7.30 pm, in the Mortimer Rooms, Old Market, Nailsworth.

Whilst swallows and martins slipped away a few weeks ago for warmer climes, we have been treated to some warm dry days in September. The past weeks have been ideal for harvesting or painting and hopefully enjoyed by many of us before winter returns. Rainfall and temperature charts for January – July are provided by Mark Campbell.

The long awaited upgrade of some water supplies in several parts of the Village nears completion. Works in the narrow lanes to Cress Green and Middle Street had been of concern, however, the cooperative and polite band of operators made the experience far more agreeable than had been anticipated. By stark contrast diversion of traffic on Sunday 30<sup>th</sup> August, off the A38 through the 3-way traffic controlled works in Eastington, caused gridlock and misery. Although closures of the A38 and works in Eastington had been planned many months in advance, it seems that County Council (GCC) failed to recognise the inevitable impact of major road-works scheduled on their diversion route through Eastington. Given that GCC issues permits for road-works, the situation should have been avoided. It seems GCC remains blissfully unaware of problems caused, and our County Councillor has invited us to contact her about experiences during the gridlock.

Some dates for your diary: The ever popular, highly interesting and competitive **Village Quiz** will be held on Friday 17th October in Eastington Community Centre, 7.30 for 8.00 p.m. start. The **Christmas Bazaar** at Eastington School Hall 12pm - 3pm on Sunday 7<sup>th</sup> December. A bonus of TWO events on Saturday 18<sup>th</sup> October at Owen Harris Memorial Ground: **Parish Apple Day** starts at 10:30 am. in Eastington Community Centre and **Boat Building** and **Planting** at Snakey Park from 10 am.

In this edition of 'Community News we hear from Playgroup and from Bill Edwards on footpaths. Advice comes from PCSO Liz Ward following recent break-ins to sheds and garages locally; an additional precaution is to ensure all ladders are securely stored so that burglars can't use these to get into yours or your neighbour's home.

At the Methodist Church we hear about summer events, Youth Club and 'Messy Church', and information about services is included. From St Michael and All Angels' Church there are details of services, and Bangers & Mash, Coffee Morning & Garage Sale events. Val Taylor has written an interesting article explaining how the 'roll of honour' website has now been updated, with additional information about the men listed on Eastington's war memorial. It is a timely update for the centenary commemoration of the start of WW1.

**Andrew Niblett – Editor**

***Next Deadline: Articles by THURSDAY NOVEMBER 20TH 2014***

***Next Delivery: Saturday November 29<sup>th</sup> 2014***

## REMEMBRANCE

Two years ago I did some research on the men commemorated upon Eastington War Memorial who died during the First and Second World Wars (Eastington Community News October/November 2012).

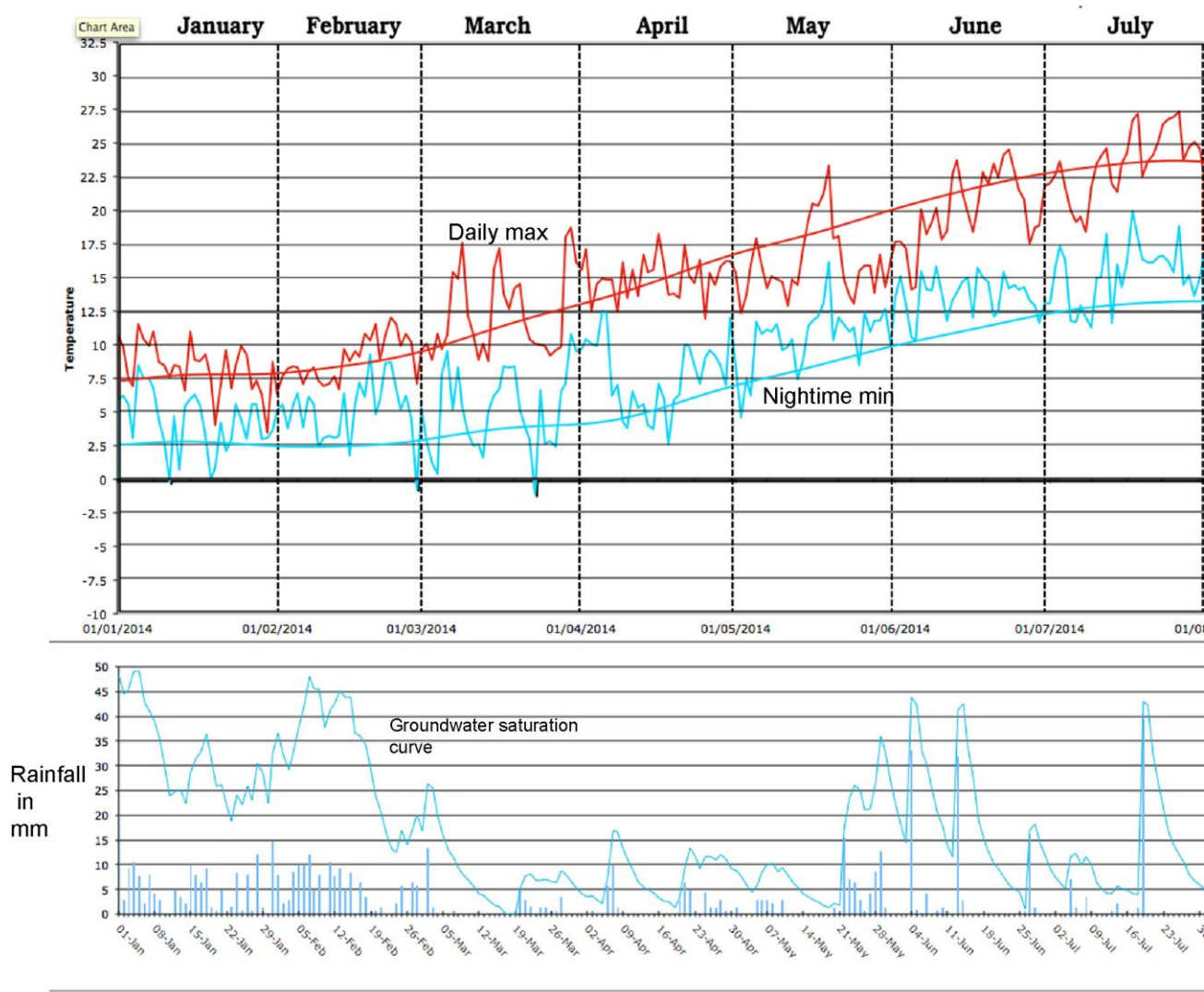


I'm pleased to say that this information is now on the internet and you can access it via the link below. The website compilers, who have taken on the mammoth task of recording as many war memorials in the country as possible, are currently inundated due to a great surge interest in this 100<sup>th</sup> anniversary year of the start of WW1. Because I had made some headway with the research for Eastington, however, their task was made easier and I think we 'jumped the queue' as it were. They have added extra information such as service numbers and some family and occupation information from the 1911 census. Do have a look - our Eastington men are not forgotten.

<http://www.roll-of-honour.com/Gloucestershire/EastingtonNrStonehouse.html>

Val Taylor

## Weather in Eastington - 2014



# Eastington Parish Council News

I hope you are all enjoying this good Autumn weather; let's hope it continues well into October to help shorten the winter months.

The Parish Council is still busy. We have been informed that the planning application for Bath Road and the Bungalow has been refused and we must now wait to see if the developers appeal the decision. The Neighbourhood Development Plan Steering committee is still working hard to complete the next stage. You should have all received your questionnaire by now so please fill them in and return them to us.

The Playground is now up and running and is being well used. The fencing around the playground should be completed by the time you read this. I have noticed there are still hedges in the parish that are impeding public footpaths. If you have a problem getting these cut please let me know and I will try and help.

We still have a vacancy for a Parish Councillor, details below. If you are interested do contact me for further information and or an informal chat. If you have any questions regarding Parish matters please don't hesitate to contact me.

**Muriel Bullock | Chair Eastington Parish Council | [murielbullock@gmail.com](mailto:murielbullock@gmail.com) | 01453 826172**

## Would you like to be a Parish Councillor?

**Would you like to represent your local community? Are you up for a challenge? Your contribution could help make a positive difference within the community. Being a parish councillor can be an extremely rewarding experience offering unique opportunities to make a positive difference to the people and places within your community.**

Eastington is recognised as being a vibrant parish and the Parish Council is dedicated to providing and improving services to create a vibrant and positive community representing the issues, concerns, ideas and interests of local people.

Eastington Parish Council is enthusiastic and committed to involving themselves in a variety of projects including:

- Developing with the community a 20 year Neighbourhood Plan
- Working with and supporting many local community groups and events
- Improving the environment in the parish
- Working with Gloucestershire Highways in improving footpaths, bridleways, roads and road safety
- Looking after the burial grounds
- Responding to planning applications

There are a number of requirements to being a parish councillor. A person is qualified to be elected as a councillor if they are a \*British, Commonwealth, Irish or European citizen and over 18. In addition, the person must meet at least one of the following:

1. they are on the electoral register for the parish
2. during past 12 months they have owned or tenanted land or premises in the parish
3. during the past 12 months their principal or only place of work has been in the parish
4. during the past 12 months they have resided in the parish or within 3 miles of it.

*(Bankrupts and those subject to recent sentences of imprisonment are disqualified from standing)*

**If you are interested in being a parish councillor and wish to know more then please contact the Parish Clerk at [eastingtonparishcouncil@gmail.com](mailto:eastingtonparishcouncil@gmail.com) or telephone 01453 799616.**

**The deadline for applications is 13<sup>th</sup> October 2014**

**We look forward to hearing from you.**

# Eastington's Neighbourhood Development Plan (NDP)

The Neighbourhood Development Plan (NDP) is progressing well with the framework for the final plan now being developed. Following on from the Parish Plan, the Housing Needs Survey, the successful NDP consultation event in February and the recent Drop-In on 27th September this year, the Steering Group has been working on the responses and undertaking further research on the themes of Housing; Natural Environment; Community Renewable Energy; Employment; and 'Getting Around the Parish'.

## Have your say in the future of Eastington Parish

You should have all received your copy of the NDP Parish Questionnaire. Thank you to those of you who have already completed your questionnaire, the response so far has been fantastic. Due to the quality of the feedback, and because parishioners' views are so important, **the questionnaire deadline has been extended to 7<sup>th</sup> October 2014.**

This important questionnaire is based on the responses to previous surveys and consultation events and is a key part of the evidence base for the NDP. To be able to formulate the policies for the Neighbourhood Development Plan, the Steering Group needs **YOUR** views and encourages you to complete the questions for each theme. You are also asked to enter your own thoughts, ideas and comments in the blank areas provided.

For further information on Eastington's Neighbourhood Plan, how you can get involved, or to complete the questionnaire online, please visit [www.eastingtonndp.co.uk](http://www.eastingtonndp.co.uk) or ring me on telephone number 07720266926.

We look forward to receiving your completed questionnaires.

**Peter-Edis Bates | Chairman Eastington Neighbourhood Development Plan Steering Group**

---

## Building Affordable Homes for Community Benefit

### *How a Community Land Trust (CLT) can deliver much needed homes*

Over the years Eastington has seen a lot of action by developers aiming to provide the sort of housing that makes best commercial return for them, and naturally this is what is expected from 'market forces'. The design and size of homes in the past generally met the need of local people but more recently the system has failed to provide appropriate size or style of houses wanted in Eastington. The recent frenzy in Eastington by developers eager to make a fortune, has led some to question the ability of the planning system to deliver the right sort of homes in the right place.

In ECN last September, the possibility of building affordable homes for community benefit in Eastington was introduced. It has been well demonstrated elsewhere in the country that a 'Community Land Trust' (CLT) is a viable and desirable way of delivering the sort of homes that local people need, and we could do that here in Eastington too.

Many of you will be aware of the Cashes Green Hospital site being redeveloped, but did you know that this is the site of the biggest CLT development in the United Kingdom and is providing the sort of homes truly needed by local people? Kevin McCloud of Channel 4 Grand Designs is the entrepreneur behind that scheme. Nailsworth is also well down the track of providing homes via a CLT, and there is an open invitation to you to attend their meeting to learn about the benefits:

**Come and hear about how other communities have set up CLTs and delivered affordable housing in partnership with a Housing Association.**

<p><b>Tuesday 21st October @ 7.30 pm in the Mortimer Rooms, Old Market, Nailsworth</b>, Karl Hine of Aster Homes will be sharing their experience of working with local CLTs.</p> <p>At 6.30pm there will be the AGM of Gloucestershire Land For People - the county's community land trust, with drinks at 7pm.</p>
--

## Community Group – ‘Don't Strangle Stroud’

In the July addition of ECN I suggested the Parish remained under imminent threat of substantial housing development, West of Stonehouse (WoS), North of Eastington and the Bath Road (between 2,000 and 3,000 houses into our parish). Those threats continue to be very real and present.

### ❖ WHAT'S HAPPENED?

Stroud District Council has employed a Consultant to carry out yet another “objective assessment” of housing need. “Much to our surprise” he is already arguing for much higher numbers than the 9,500 the previous consultant suggested. Using his methodology at the higher end we identify similar figures to one of the developers at The Local Plan Examination in Public. If indeed this turns out to be his recommendation, the proposals for North of Eastington would become a reality.

The good news is that Steve Lydon councillor from the Stanley's is heading up the key committee responsible for delivering the Local Plan. Steve with Ken worked hard with many other Councillors to ensure that the Local Plan was changed in line with the public consultation that took place, and, among many other things ensured that WoS was rejected as a “strategic site”.

### ❖ NEXT STEPS

The SDC consultant has prepared substantial information supporting his views on additional houses in the three Districts that make up the Joint Core Strategy (JCS). We have joined forces with action groups across Cheltenham, Gloucester and Tewkesbury, all of whom have very serious concerns about the consultant's representation of data. This consultant suggests he is a Fellow of a commercial arm of Cambridge University (Cambridge Centre for Housing & Planning Research (CCHPR)). We have therefore identified our concerns and evidence to the Professor responsible for CCHPR and requested a peer review ([new-town.info](http://new-town.info)). At the time of going to print we await the Professor's response.

### ❖ WHAT ARE WE UP AGAINST?

The current parish survey indicates strongly that all of us support the need for more housing especially for our young and older residents; we are not ‘nimbys’. What we are is a group of individuals who believe in providing the houses that our community needs. We should all remember that every additional 1,000 houses that the SDC put into the plan is around £250 million of investment and income for the developer and Landowner. In addition a “new homes bonus” is paid to the council for every new house built. It therefore cannot be a surprise that the forces ranged against us (to build far more houses than the “objective Assessment” already carried out by the first SDC Consultant) are now pressing very hard to achieve that excessive number. We need common sense to prevail please help us deliver that the houses the community needs not the houses developers and others want.

### ❖ WHAT CAN YOU DO

We are negotiating the appointment of a QC to support us through the next stage. Our colleagues in the Stanley's are also seeking a legal appointment and have raised a substantial amount of money to fund this. In the last edition I sought financial support, we have had money coming in but we urgently need more if we are to successfully defend our parish. In the first phase we need up to £10,000. Should we need to consider Judicial Review we will need pledges of substantially more. The appeal we attended in the Stanley's saw the developer funding a large team headed by a Senior Barrister at a cost of tens of thousands of pounds. If we are to do battle with Goliath we will need at least a “sling” so please help us in this next stage.

**Contributions may be forwarded to: DSS Treasurer, Steve Ashton, 2 Dotloe Farm Cottages, Eastington, GL10 3SR in favour of ‘Don't Strangle Stroud’**

Daniel James | DSS



# Public Rights of Way

## Circular Walks and Section 119 of the Highways Act 1980

Just a quick reminder about some lovely circular walks in and around our Parish - Recently, with some help from some friends, the paths to Cambridge (on the A38) and the paths to St. Peter church (near Frocester) were cleared, thereby giving easy access to two interesting walks.

Unfortunately, the County Footpaths Officer for our area has been tasked with taking on the responsibility for another area as well, so, in the foreseeable future, it will probably be up to regular walkers to report any footpath issues, and to be more active in keeping footpaths cleared, (a good reason to carry some secateurs with you!)

It has also been brought to my attention that some footpaths in a neighbouring Parish are under threat of closure. Anyone who is interested in keeping our footpath Heritage can contact me for more details. Be AWARE, once a footpath has been extinguished it cannot be reclaimed. It is important that our footpaths remain on the Definitive Map. Our right to walk in the countryside goes back to Roman times - *nec vi, nec clam, nec precario*, 'without force', 'without secrecy', 'without permission'. We cannot expect our children to protect a footpath that has already been officially extinguished.

**Bill Edwards**

## Solution Focused Hypnotherapy

Help with... Anxiety, Stress, Fears,  
Weight issues, Habits, (nail-biting etc)  
Phobias, Self-confidence

**Free initial consultation INCLUDES FREE CD**

**Hazel Rank-Broadley** DSFH DHP HPD

tel 01453 791424      mob 0783 787 6901

"I very much appreciate all that I have learnt from Hazel about rewiring the brain through trance. Hazel's no-nonsense intuitive approach creates a very clear space in which to make beneficial changes to mental habits and belief systems."

Kate D

[www.gettingclear.co.uk](http://www.gettingclear.co.uk)

# District Councillor's Newsletter

## Local plan

The work to the Plan as requested by the EIP Inspector before he reopens the Enquiry continues. The new Planning Panel I have mentioned previously is being used as an interface between officers and elected members on the results of work being carried out, especially with external consultants. The main focus of interest is the work requested on the way the housing figures submitted to the EIP were calculated and whether the growth element in those numbers properly reflects the thinking of the government through the National Planning Policy Framework. (My feelings on this document have been made very clear in the past). I think it is fair to say that frank exchanges have taken place between the attendees of this Panel. The results of this work are very close to being published and it is a very tense time at the moment.






One of the main problems in the process is the so called 'Preferred Strategy' adopted by the previous administration. The consultation on this strategy only focused on a few large sites, most of which were either in our Parish or close to it. If extra sites have to be found I understand that only those sites consulted on in that Strategy can be put forward in this Examination Process as allocated sites. This of course puts our Parish again very much at threat. The (to my mind) idiocy of the present planning system is that other smaller sites (100-200 capacity say) around the district not consulted on could come forward now as planning applications and be granted consent, but we could not put them in as allocations for our formal Plan. A lot of work is being done by residents of Eastington Parish in support of our wish to remain a Rural Parish and I thank them for the enormous amounts of time and energy they are committing to this. My opinion is that no other Parish in the District is more involved in this process than ours.

## Boundary Commission Review

I have mentioned this previously. The District Council has already decided to move to all out elections every four years. This is so that we can keep the mixture of one, two and three member Wards we think serves the residents of the district well. The council decided to recommend to the Commission that the number of councillors that make up the council should remain the same at 51. I understand that they are minded to support this view. How the new Ward boundaries will be drawn up is work in progress. Eastington Parish Council is involved in this process. My hope is that because the councillor numbers will remain the same, that the realignment needed because the Upton St Leonards Ward exceeded the required resident/elected member ratio that the changes required, can be contained close to that Ward and the ripple effect will not impact on our Parish much, if at all. It remains to be seen if that will happen. The result of this Boundary Commission involvement is that there will be all out elections to Stroud District Council in 2016.

Ken Stephens | September 2014

### **Eastington Primary School Christmas Bazaar Eastington School Hall 12pm - 3pm Sunday 7th December**

-  Grand Prize Draw
-  Hot and Cold Refreshments
-  Gift Stalls
-  Mince Pies & Mulled Wine
-  Santa's Grotto with a visit from Santa himself

# St Michael and All Angels' Church

## *One of the 'Cotswold Edge' Parishes*

*(Eastington, Frocester, Haresfield, Moreton Valence, Standish and Whitminster)*

**Benefice Website:** [www.cotswoldedgeparishes.org.uk](http://www.cotswoldedgeparishes.org.uk)

**Our mission is: to show God's love for His people,  
and nurture His people's love for God**



Dear Friends,

I arrived back from the Greenbelt Festival at the end of August. Greenbelt is a big 40 year-old Christian event that for the past 15 years has been held at Cheltenham racecourse. With the major redevelopment going on there the festival needed to find a new home, and one was found just north of Kettering in Northamptonshire. I am the night stewarding manager, and my team and I have to negotiate our way around the site in the dark. Having become used to a racecourse and grandstand to look after, moving to a 'greenfield' site we didn't know was rather a disorientating experience to say the least! In the dark one tent looks very much like another – and if you get up and go to the loo in the night (they are lit) you may find it harder than you think to find your way back with no torch, as one 10 year old found this year! Dressed in a onesie he was found wandering around, completely lost at around 4am, with the temperature having dropped to just 3 degrees!! We never did find his tent. Never mind – our team found him a warm place in the medical centre until the morning when we were able to locate his parents via their mobile phone – which they had switched off overnight to save the battery.

Potentially more serious was a parent reporting, at 3am in the morning, that their 12 year-old and his mate had not returned to their tents. We got to know the site well that night – we set ourselves 60 minutes to find them before reporting the absence to the local police. We found them in 55! They weren't worried, they knew where they were, and their parents had missed the note they'd left for them. Those two lads didn't consider themselves lost. The 10 year old lost boy did – and he was glad to be found.

Most people at some point need to be found, cared for, and feel loved. Do you ever find life disorientating? Do you feel lost? Who would you want to find you - a person, God, or the Greenbelt night team perhaps? There are some moments in time when we just come to the realisation that our lives are all wrong, despite our best efforts. Jesus' parable 'The Prodigal (Lost) Son' tells of a young man who left home, wasted all his money, ending up with no friends, nowhere to live, feeding pigs (with food he would gladly have eaten) in a foreign country. He came to the realization that he'd really messed up, and just wanted to go home, apologise to his family, and hopefully make a fresh start.

His father's response? He was filled with compassion for him and declared, "Let's have a feast and celebrate. For this son of mine was dead and is alive again; he was lost and is found." (Read it for yourself – Luke chapter 15, verses 11-32.) Great Story – Great God!

*Yours in Christ,  
(Rector)*

A handwritten signature in black ink, appearing to read 'Richard'.

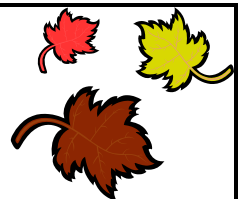
**Revd Richard Amys, The Rectory, Millend Lane, Eastington, GL10 3SG.**

**Email:** [richardjramys@aol.com](mailto:richardjramys@aol.com). **Tel/fax** 01453 822437. **Day off** – Saturday. (Mobile 07796 956050)

## **Churchyard & Burial Ground 'Autumn Tidy-up'**

We need volunteers to clear ivy from walls and tombstones, overgrown foliage etc and to make a bonfire!

Date: 18 or 25 October depending on weather – from 10-1pm as a start! Please bring suitable tools. The more the merrier



**Please contact Pauline Allen | 01453 822068 - she will have a plan of work!**

**Eastington - Winner of Gloucestershire Vibrant Village of the Year 2010**



## Services in October and November

<u>5<sup>th</sup> October</u> <u>16<sup>th</sup> after Trinity</u>	<u>12<sup>th</sup> October</u> <u>17<sup>th</sup> after Trinity</u>	<u>19<sup>th</sup> October</u> <u>18<sup>th</sup> after Trinity</u>	<u>26<sup>th</sup> October</u> <u>Bible Sunday</u>
(p213 - green) <b>Isaiah 5.1-7 &amp; Matthew 21.33-46 (p323/5)</b>	(p214 - green) <b>Philippians 4.1-9 &amp; Matthew 22.1-14 (p331)</b>	(p214 - green) <b>Proverbs 4.1-18 &amp; 1 John 3.16-4.6</b>	(p368 - green) <b>Nehemiah 8.1-12 &amp; Matthew 24.30-35 (p368/70)</b>
10.45am Holy Communion ( <i>Angela Reeder</i> ) 1.30pm Wedding Thur 9 <sup>th</sup> 2pm School Harvest Festival in church	*10.45am Harvest Communion (Donations of Food for the local FoodBank – money for HoverAid)	1pm Holy Baptism 6pm Sung Evensong	10.45am Holy Communion

<u>2<sup>nd</sup> November</u> <u>All Saints' Sunday</u>	<u>9<sup>th</sup> November</u> <u>Remembrance Sunday</u>	<u>All Souls'</u>	<u>23<sup>rd</sup> November</u> <u>Christ the King</u>	<u>30<sup>th</sup> November</u> <u>St Andrew</u>
(p345 - white) <b>Isaiah 56.3-8 &amp; Matthew 5.1-12</b>	(p1282 - red) <b>Isaiah 9.1-6 &amp; Matthew 5.43-48</b>	(p1196 – red) <b>Lamentations 3.17-26 &amp; John 5.19-25 (p1197/1200)</b>	(p360 - red) <b>Ephesians 1.15-23 &amp; Matthew 25.31-46 (p362)</b>	(p1024 – red) <b>Romans 10.12-18 &amp; Matthew 4.18-22 P1205/6)</b>
10.45am Holy Communion ( <i>Angela Reeder</i> ) Fri 7 <sup>th</sup> 1pm Wedding	10.45am Remembrance Communion	6pm All Souls' Service	10.45am Holy Communion	10am Benefice Communion at Whitminster

*All services are taken by the Rector unless stated otherwise*

### Baptisms

**Cerys May Walsh Jones** was baptised at Eastington on Sunday 17<sup>th</sup> August.

**Jake Patrick Downes** was baptised on Sunday 15<sup>th</sup> June.

### Weddings

**Ato Andoh and Dominique Standing** celebrated their wedding at Eastington on August 2<sup>nd</sup>.

**Jack Dexter and Ann-Kathrin Salge** were married at Eastington on August 4<sup>th</sup>.

**Alex Wellings and Mel Spencer** were married at Eastington on August 9<sup>th</sup>.

**Anthony Wilkinson and Chrissy Piggott** were married at Eastington on August 22<sup>nd</sup>.

**Jake Downes and Holly Meadmore** were married at Eastington on September 2<sup>nd</sup>.

### Funerals

**Yvonne Alder**, of Eastington Grange Care Centre, died on July 16<sup>th</sup>. Her funeral was conducted by the Rector on 30<sup>th</sup> July at Gloucester Crematorium.

**John Herbert**, of Nupend (and formerly Frocester) died on August 7<sup>th</sup>. His funeral was conducted by the Rector on 15<sup>th</sup> August, followed by burial in Eastington Cemetery.

**Henry O'Neill**, of Swallowcroft, died on August 7<sup>th</sup>. His funeral was conducted by the Rector on 18<sup>th</sup> August, followed by burial in Eastington Cemetery.

### Harvest Festival

This year our parish is holding a Harvest Festival service and would like to warmly invite those who come infrequently to church in particular to come and join us. Please bring non-perishable foodstuffs and practical toiletries that can be donated to our local Foodbank – these can also be donated through Eastington school too.



This year our churches are donating their harvest collections to 'HoverAid'. HoverAid hovercraft, bring aid and development to remote communities in Madagascar where hunger, malaria, HIV and lack of clean water affect the health of millions. HoverAid's hovercraft reach unreachable villages when Africa floods, providing relief organisations with access to those most in need.

### **The vision of HoverAid is to save, sustain and enrich human life.**

'We stand against poverty, oppression, injustice and hunger and we bring physical, medical and spiritual support to people who live in isolated areas of the world, irrespective of age, race, gender, or religion. "to loose the chains of injustice and untie the cords of the yoke, to set the oppressed free and break every yoke, to share food with the hungry and to provide the poor wanderer with shelter, to clothe the naked, and not to turn away" (Isaiah 58, The Bible)'

HoverAid's aim is to use hovercraft to reach remote communities and address the injustice, oppression, poverty and hunger that are a result of poor access. Their website states: 'We aim to bring aid to remote communities, build trust with the people we meet there, understand their needs, and tell others about the problems that they face.

#### ***Bringing Aid***

To support, enable, encourage and deliver: aid, relief, education and mission services to remote communities along shallow rivers by using hovercraft to provide cost-effective access for partner organisations; enabling them to do what they do best in communities that need help and support the most.

#### ***Building Trust***

To be a generator of social capital, building trust with remote communities, researching their needs and aspirations and providing them with a voice to the wider world.

#### ***Telling Others***

To challenge other organisations and institutions to engage with the development agendas set by remote river and wetland communities, and to act as advocates of policy change by those organisations to reduce the systematic exclusion of remote communities caused by utilitarian decision-making processes.'

**Website – <http://uk.hoveraid.org>**



"Delivery for whoever ordered the trendy alternative to a basket of groceries..."

### **Stroud District Foodbank**

Over 300 people used the Foodbank last month and last year across the Stroud District Foodbank they fed 4243 people.

All were referred via third party professionals and were given food for 3 days to help them manage during a crisis. All their food and funding came from local people here in our District.



***There is a collection point for donated goods at the back of Eastington Church***

**Revd Richard Amys | The Rectory | Millend Lane | Eastington | GL10 3SG.**

**Email: [richardjramys@aol.com](mailto:richardjramys@aol.com). Tel/fax 01453 822437. Day off – Saturday. (Mobile 07796 956050)**

### ***Library in Church***

The small library in our Parish Church of St Michael and All Angels continues to thrive and is well used. A comfortable well lit area has been provided for those who wish to sit and browse. We have extended the facility to include Audio Books which will be particularly useful for the visually impaired and for those who simply enjoy listening to their favourite book.

We are revising our charges and in future will ask for a donation of 50p to borrow and £1.00 to buy books. The audio books are for hire only and the charge is £1.00.

If you have any contemporary novels or recent paper backs in good condition these are in great demand and any donations will be most welcome. We do have some regular borrowers and book buyers who find this small library a real community asset and we are always needing to restock with popular books. We need your support to help assure the future of the library.

# Eastington Playgroup



## Autumn - September 2014

We held our AGM at the Kings Head and had a brilliant turnout with some lovely food. We now welcome our new committee and parent volunteers and look forward to working with them in the next academic year, which is sure to be as busy and exciting as this one.



This term we are focusing on settling children in and following routines. We are talking about the rules and boundaries at playgroup, being kind to our friends and taking turn, and to support this we have made a display of the rules.

The children have been blackberry picking and have made some delicious pies to take home whilst learning about safety with kitchen tools and equipment and also being careful with thorns on the plants! We have also already had a trip to the local Co-op where we looked for numbers on the shelves, talked about healthy and unhealthy food and bought ourselves some fresh fruit for snack too!

We have been busy digging, planting and watering the few plants left on our allotment. We now have a 'mud-kitchen' where the children can make use of our old kitchen saucepans, pots, and large spoons to make mud pies, even when our crops have diminished. Lovely!

We have also been talking about our holidays; where we went and what we did during the summer, looking at where we stayed and what we enjoyed playing with.

The staff have lots planned, and will keep everyone updated in our next newsletter which I am sure will enlighten everyone on the famous Christmas performance which is just around the corner!!

If you would like your child to enjoy a stimulating, fun and safe environment to learn and play in then we would love to hear from you. Spaces for September 2014 are filling up very quickly and some sessions already have a waiting list, however if you are interested in coming for a visit then please contact us we would love to meet you!

---

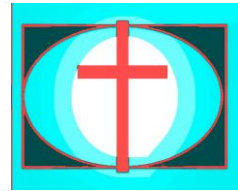
Our playgroup offers care and education for all children in a well established community based group. We offer your children a safe and stimulating environment in which they can grow and blossom into self confident, self reliant and positive little people.

Our ultimate goal is to enable the children to have fun, explore and have the freedom to express their individuality, while forming the basis of their education.

We accept children from the age of 2yrs 6month to 5 years and operate 4 days a week (Monday – Thursday), offering full and half day sessions and we accept government nursery vouchers and other types of employer supported childcare vouchers.

**If you would like to have a look around our fantastic facilities and have an informal chat please call one of the staff on 07977 342 742.**

# Eastington Methodist Church



## Serving God by serving the community

The summer period saw a variety of outings and other activities including a beach trip to Wales and a visit to the restored canal at Ebley where activities such as fishing and boating took place with the young people. The well attended church Youth Club continues to run on Fridays at 7 – 9pm and another themed youth sleepover is planned for mid October.

The Junior Youth Club meets on Fridays 5:30 – 6:45pm for children aged 7 to 11 and provides the usual entertainments such as a pool table, table tennis, indoor football and video games; it also has craft activities - often in the form of cooking. We are keen to get this club established and we could really do with a larger number of children to really get it going. Therefore if you have, or know of, children in this age group, please mention it.

Our main Sunday service is at 11am and a club for younger children runs in parallel under the leadership of Liz, our Youth & Family Worker. Parents have the option of staying in the service or accompanying their children. Refreshments are provided after the service.

Our Messy events remain popular with well attended Messy Summer and Messy Harvest events. Messy Autumn is in the planning stage and is expected to take place during the October half term break. Please look out for publicity nearer the time.



*Children's activities on Sunday Mornings*

The next Tea & Chat is on Wednesday 3<sup>rd</sup> December from 3 – 4:30pm. Throughout August, the church ran a Drop In Café on Wednesday and Thursday mornings which proved popular. We are considering how we might organise more of these.

The church is involved with two Toddler Groups, one at EMC on Monday mornings and another at Whitminster Village Hall on Wednesday mornings. We are gauging what interest there might be in a parenting course were we to try and run one. Please contact us if this would be of interest.

At the other end of the age spectrum, we continue to run Hymn & Prayer at the lounge at Broadfield. This is not just for those living in the sheltered housing scheme but for anyone who wants to come along to sing a few of the older hymns, listen to a short message, pray and spend some time chatting over a cup of tea. These meetings start at 2pm and usually take place on the 4<sup>th</sup> Wednesday of the month which is 22<sup>nd</sup> October and 26<sup>th</sup> November. The December one is on the 17<sup>th</sup> to avoid Christmas.

**Ken Burgin | Senior Steward**

**Ken, Beck & Liz Burgin | 01453 827414 | [www.EastingtonMethodists.org.uk](http://www.EastingtonMethodists.org.uk)**



# County Council Report

The summer weeks tend to be quiet but autumn is now here and once again the diary fills up. The Labour Group passed a motion at the September County Council meeting instructing the leader and chief executive of the council to write to Eric Pickles urging him not to delay a decision regarding the building of the incinerator. A decision had been expected on 18 September however on the 16 September we heard that this decision has been deferred until the end of November.

The County Labour Group has welcomed news that a significant majority of community and voluntary controlled schools in the county are now paying the Living Wage. Our Living Wage proposal was passed by the County Council in February and now 154 of the county's 161 Schools will start paying all staff at least £7.65 per hour, the Living Wage. This is great news for all GCC staff who are currently on salaries that are less than the Living Wage.

Meeting the Challenge 2 has now completed its consultation period with over 2000 people putting forward their views on the proposals to cut the council budget by £75million. We have yet to be presented with detailed proposals on how this will be achieved. I will keep you posted. The Labour Group will do all they can to defend front line services. I am always happy to answer questions so do get in touch please.

**Cllr Lesley Williams 01453 822684 | County Councillor Stonehouse Division**

---

## Wycliffe choral society

### Programme for 2014 - 2015

Wycliffe Choral Society resumed rehearsals on Tuesday 2<sup>nd</sup> September and new members are welcome on all four parts. The choir numbers about 100 members at present and is noted for its friendliness.



Rehearsals are held every Tuesday evening from 7.45 – 9.30pm during term time in the Performing Arts Centre, Wycliffe Preparatory School, Stonehouse, and newcomers were invited to attend rehearsals in September to see how they got on before committing themselves to join. There are no auditions and copies of the music are provided.

The programme for the year includes *The Peacemakers* by the Welsh composer Karl Jenkins which dates from 2011 and is a companion piece to his enormously popular *The Armed Man*. It is a most moving work dedicated to all those who lost their lives in armed conflict with music that is extremely varied and rewarding to sing and a text that includes words by Nelson Mandela, Mother Teresa and Terry Waite among others, as well as quotations from religious texts such as the Bible and Qur'an. The performance is on Sunday November 30<sup>th</sup> after which the choir will start rehearsing for its May concert and tour to Malta for which the programme will include Beethoven's *Mass in C* and Poulenc's *Gloria*.

For further details visit [www.wycliffechoralsociety.org](http://www.wycliffechoralsociety.org) or telephone the secretary, Rosemary Robinson on 01453 834356 or the conductor, Chris Swain, on 01453 822998.



# Active Community

## Security information from Gloucestershire Constabulary

In the last month we have had several sheds & garages broken into in your local area including The Stanleys & Stonehouse . Could you all be mindful to secure your sheds and garages. There are some useful tips below.

### Practical steps you can take to deter your shed being broken into :

- Making the access to the rear of your property as difficult as possible.
- Using locks, bolts or a padlock and chain on all side and rear gates.
- Planting prickly or thorny plants around the fence line to deter intruders.
- Fit and use security lighting – but ensure it will not annoy the neighbours!
- Make sure sheds are kept securely locked.
- Make windows opaque so property is not on display.
- Mark all valuables with your postcode and house number.
- Secure valuable items to each other or to the fabric of the shed. This will make removal much more difficult.
- Consider fitting an alarm.

### You can purchase several items from Stroud Police Station

- Shed Alarms £ 8.40
- Shed Sticker 30p
- Smart Water £ 15.00
- UV Pen 30p
- And various other Items for home security

Liz Ward | PCSO 9081



## Eastington Village Quiz

All Organisations, Groups and individuals are warmly invited to take part in a Fun Quiz  
Evening at

**The Community Centre**

Owen Harris Memorial Ground

**Friday 17<sup>th</sup> October 2014**

**7.30 for 8.00 Start**

Team's maximum of 6

(Or make up a team on the night!)

All will be very welcome

**Tickets £6.00 per head which includes a Ploughman's Supper Bar  
available Raffle**

Please make sure you book your table by 10<sup>th</sup> October 2014

Tickets available from:

Robin Harris 01453 823433 | Jacky and Mike Naylor 01453 828682

**All proceeds to St Michael and All Angels Church Fund**

## New pension rules - what do they mean for you?

New rules about how you can access your pension savings will come into effect in April 2015. From this date, you'll be able to access and use your pension pot in any way you want to, after you reach the age of 55.

The main changes include:

- the option to take up to 25 per cent of your pension pot as a tax-free lump sum when you retire
- converting some or all of the rest of the money in the pot into a guaranteed regular income, called an **annuity**
- taking out the rest of the money in stages or as one lump sum, which will be taxed.

Sandi Sorell, Deputy Manager of Stroud & District CAB says 'If you're retiring before April 2015, the existing rules have been relaxed, meaning you can take out more of your pension as a lump sum and change the amount you can take out in stages. Working out what to do with your pension savings is a big decision, so it's important to look at your options carefully. From April 2015, you'll be able to get free and impartial advice to help you decide. If you're planning to retire between now and then, you could talk to a free service such as the **Pensions Advisory Service on 0300 123 1047**, or speak to a financial adviser.'

The Stroud & District CAB have a freephone telephone number for advice 0808 800 0510 and will also give advice by email. Self-help advice is also available from the website. Emails can be submitted via the website [www.stroudcab.org.uk](http://www.stroudcab.org.uk). The CAB helps people resolve their legal, money and other problems by providing free, independent and confidential advice and by influencing policymakers.

## Coffee Morning and Garage Sale



At The Nestings, Nupend, Eastington, GL10 3SP  
Saturday 15<sup>th</sup> November 2014 10am until 12.00 noon

***Admission Free***  
**Coffee, tea and cakes plus Garage sale**

Further details from:

Robin and Celia Harris | 01453 823433

**All proceeds to St Michael and All Angels Church Funds**

## We would like to introduce you to our local 'EARS' group

### What is 'EARS' ?

'Eastington's Approaches to Reducing traffic Speed' is a new group of parishioners who are working to improve road safety in our parish. But this is not about getting others to provide more 'signs, road bumps & traffic wardens'! This is about us and what we can do to help ourselves and our village to look and feel great. We need to feel good about ourselves and make it clear to all that Eastington is not just a rat-run!

### We have EARS to listen to:

- Your concerns
- Your ideas
- Your help to improve the environment

### How will 'EARS' improve road safety in this parish?

It is known that vehicles are driven with greater consideration in environments that are cared for, so 'EARS' seeks to promote road safety through a 'mental traffic calming' approach. One initiative being adopted is the **greening** of key areas of the parish by introducing plants and flowers on roadside grass borders, hanging baskets etc – all ideas welcome to make a start through a co-ordinated parish approach.

We would like to encourage as many as possible to take part, with your 'road area' co-ordinator, developing ideas to create and show others that yours is an interesting, clean and green area of the parish to live in – so please take care of it! We have identified a person for each of main areas as a start - Bath Road, Middle Street, Alkerton central, Claypits, Springhill, and Grove Lane. If you live elsewhere and would like to form another group, please let us know. We have gathered together information from various sources and will be happy to share this with groups – many small projects to start with.

### When will this 'mental traffic calming' initiative happen?

Small, achievable goals will be set to run over a 3 - 4 year period – starting now!

### How can I find out more about 'EARS' and road safety initiatives?

Volunteers are needed to work to improve our environment in the village and hamlets – all ages are welcome.

For further information about 'EARS' and the road safety initiatives within the parish please contact Pauline on 01453 822068 | [p.allen@saqnet.co.uk](mailto:p.allen@saqnet.co.uk)



## Bangers and Mash Evening

at

Cleeve Cottage

Millend Eastington

**Saturday 22<sup>nd</sup> November 2014 at 7.30 pm**

**Tickets £7.50 per head which includes Bangers and Mash, mince pie and a beer or glass of wine. (Dietary options available but please let us know in advance)**

**Entrance by Ticket only available from:**

Robin Harris | 01453 823433

Jacky and Mike Naylor | 01453 828682

**All proceeds to St Michael and All Angels Church Funds**

## Eastington and Stonehouse Slimming World

Another summer has drawn to a close and autumn has arrived in the hedgerows and the trees and luckily we are all still enjoying lovely warm weather. At group many of us have been out and about enjoying the good weather with lots of different activities to help us be more active. At Slimming World the food plans we offer help everyone to lose weight through healthy foods, but it's Body Magic which helps us all to become more active within our chosen lifestyles. So Body Magic activities are wide ranging from walking, (with the dog if you have one) playing games which get us moving like football; tennis; swimming; netball; gardening; washing the car and getting out on the bike. Some like a structured session at the gym or classes such as Zumba or Yoga. The idea behind Body Magic is that it's for everyone. For some, a walk to the end of the road and back is a massive achievement. Others love a bigger challenge; the choice is yours to make. Every step you take counts towards that healthier lifestyle.

Our thoughts towards our food choices are also changing as we face the colder months ahead, searching out new ideas and old favourites to fill us up, warm us up, yet helping us to slim down. Stews, soups, casseroles, curries, chilli, roast dinner and shepherds pies are all on the menu. So in group there's lots of sharing and talking to help everyone with plenty of ideas about what to cook and how to cook it; from meals for the whole family to ideas just for one.

It's been lovely being back at group and seeing everyone's progress over the time I was recuperating. The smiles on people's faces as they collect awards and certificates for weight loss and Body Magic makes it such a positive place to be. To share in everyone's achievement is a privilege and I feel very lucky to have a job I love.

If you would like to come along to find out about how to lose weight and feel healthier in a safe, positive, confidential and welcoming group, all you need to do is turn up on any Wednesday at Stonehouse community centre at 9.30am or Wednesday evenings at Eastington Village Hall at 7pm.

Happy autumn everyone, best wishes, **Lorna | 01453821751**



## Teddy Tunes

As a guitar player, people often say to me 'oh I wish I could play an instrument' but you know



what? Everyone is born with a voice and that's the best instrument anyone can have!

I'm having more fun these days singing along with my guitar, making music with wonderful parents and children in my classes than I ever did in an orchestra! However shy you might feel about singing, studies show that *your* voice is *the* most beautiful voice in the whole world to your child...yes, that's official!



Honestly, I feel I've got the best job in the world because every moment I spend singing and making music with people is a moment spent in that happy place and I want everyone to experience the joy that sharing music can bring. Having a good old sing song can lift your spirits, relieve stress and even give you a semi permanent face lift... if you open your mouth wide enough! But seriously, there are so many benefits to introducing music to your children at a young age.

Many studies have linked musical learning and language skills. Not only that, but it can be a wonderful bonding experience for both parent and child allowing the child to express themselves creatively while learning through music and movement.



Children learn faster when they are having fun and at Teddy Tunes, the time is spent on encouraging the Child's natural development through fun musical experiences, whilst not compromising the child's need for freedom and expression. The assurance of the parent's role in class therefore is vital as I firmly believe that the parent is the most important teacher.

With three children myself I know how busy parents are these days, but take time out and get yourself along a TeddyTunes session in either Nailsworth or Frampton. Grandparents are an important part of our group also, so please come along ...a warm welcome awaits.

We've got it all going on at Teddy Tunes. As well as coffee and tea for the grown-ups, fruit, yummie cake, all kinds of exciting things to bang, bubbles, parachute and dancing...it's a wonderful social club as well. These early years spent with our little ones are very precious and the time goes by so quickly, so why not give it a whirl?

Just come along any week, no sign up and no obligation. Please visit my website for other classes.

**Tuesdays (term time) Christ Church Rooms, Nailsworth - 10-11.30am**  
**Thursdays (term time) Frampton-on-Severn Village Hall - 10-11.30am**

£5 for 1<sup>st</sup> child+£1 for each additional sibling. Sibling babies under 6months and adults free

**Vanessa Cousins | 07806 802540 | [vanessa@teddytunes.co.uk](mailto:vanessa@teddytunes.co.uk)**  
**Visit us @ facebook or [www.teddytunes.co.uk](http://www.teddytunes.co.uk)**



# Eastington Youth Group



## Eastington Community Park

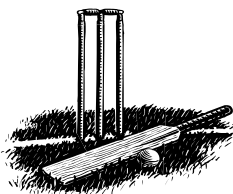
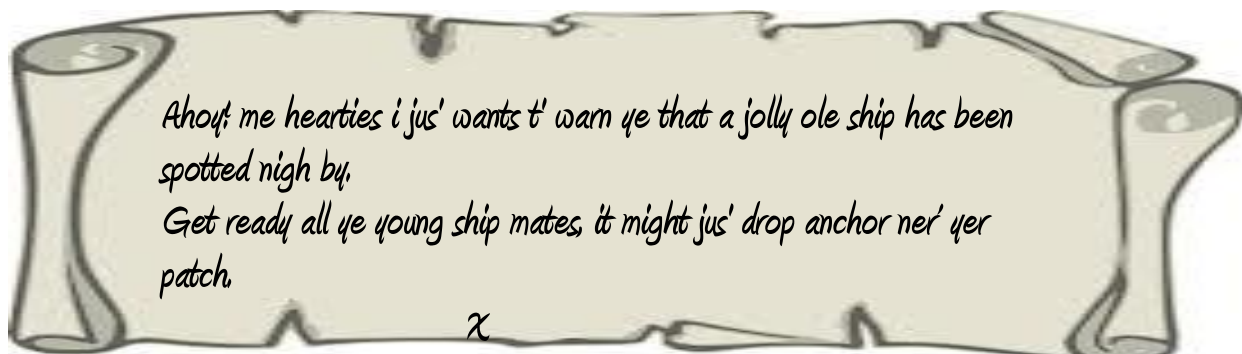
It's been heart-warming to see the number of people enjoying the park over the summer period. Even now with the days shortening and summer drifting into memories, there are still people of all ages enjoying the park.

At the time of writing this, we are planning to add some new features to the park; a couple of crawl tunnels, some sunken tyres and raised planters. In addition to this, the perimeter fence and parking space have been given the go ahead. (By the time this is published, there should be some evidence of these additions to the park). Oh, and something else...?

We're not keeping all the fun to ourselves; we invite all to join us on the 18<sup>th</sup> October, to help with some planting and build a special raised bed (not for sleeping on!). We have a wooden blockwork boat for a raised flower bed which needs assembling; a little like giant Lego really.

**A note about the 18<sup>th</sup> October event:** We will be starting at 10am, but don't worry about getting there at that time, come along when you can. Also, this coincides with the Big Apple day being organised by Eastington Orchard Group and held at the OHMG Community centre. So you may stop off at the park, do some planting or building, then amble on down to the Apple pressing. Why not bring some apples for pressing.

One last thing! We've recently received an odd message...I've attached it below for all to see.



## **Do you play or have you played cricket?**

Eastington Cricket Club requires players of ANY standard for the 2014 season, with most Saturdays (league) and 'friendlies' on Sundays, midweek days and midweek evenings. We play and practise at Owen Harris Memorial Ground.

Any standard/ability is welcome, to keep our club going.

**Please contact Steve Gallagher on 01453 791209**

# Community Produce

Eastington Community Orchard (E C O) Group



## PARISH APPLE DAY 2014 Sat. October 18th



**Join in the fun at the Community Centre, OHMG from 10.30 am**

Come along to join in with collecting and pressing lots of apples (and pears) at the 4<sup>th</sup> Parish Apple Day. You can help in many ways, irrespective of your age:

- Bring your own fruit -** if you have spare apples or pears in your garden, gather them up and bring them to the Community Centre from 10.30 onwards
- Gather fruit from an orchard -** if you have no fruit, just join in with one of our picking teams. We will be going round larger orchards to gather spare fruit. **Ring Tom (823425) in advance would be helpful**
- Press the fruit –** help prepare the apples (washing then “scratting”) and then load up the massive oak press. Pressing produces 5 gallons at a time.
- Bottle the juice -** We either bottle the juice, fresh, in plastic containers or pasteurise it for longevity and bottle in traditional 750ml glass bottles.



**Everyone who joins in goes home with some juice!**

What you have as your dividend depends on whether you are a donor, a worker or both. You can also choose to have fresh or pasteurised juice.

Remember this year tired junior workers can relax on the swings at Snakey Park as well.

more pictures at : <http://www.eastingtonorchards.org.uk>

## Beekeepers Diary - Part 4

**August 3<sup>rd</sup>.** I am kicking myself for not checking the bees sooner, because I always end up fussing around with them the day before we go on holiday. It's happened again. When I looked in the hives to see if the girls have enough space for next couple of weeks, they were looking well and bringing in plentiful honey, so busy indeed that they will need more storage space. To make room I shall have to extract some honey before we go away. I fitted the hive with porter escapes, so I can lift off the full honey super off tomorrow, spin the honey out and give the empty frames back to the bees to reuse.

They are definitely foraging on white clover and a mixture of garden flowers. Hive one has filled a whole super in the last fortnight (upwards of 10lbs of honey). It's awe inspiring to think of the work that goes into collecting just a teaspoon full of honey. It takes twelve workers their whole lifetimes to produce a single teaspoonful.

Bees collect nectar from flowers and bring it back home in their honey stomachs, where enzymes are added which convert it into honey. A little dance, performed inside the hive, tells the other workers where to find the right flowers. When the bees unload honey into the combs, younger bees fan furiously with their wings, to reduce the amount of water in the new honey until it becomes the perfect consistency for storing. Finally they seal it into cells with airtight wax caps, perfect for long term storage.

**August 4<sup>th</sup>.** We spent a couple of hours making up new honey frames. Colony three has outgrown the brood box, so we have given them a super full of the new frames. Now they have somewhere to build more comb for their stores. We extracted and bottled 12 pounds of delicious mellow tasting honey from hive one.

### Mid August

Nick checked the hives. The weather has turned much cooler, so foraging has slowed down and there are still plenty of empty frames.

**September 3<sup>rd</sup>.** All the colonies look well and viable for overwintering. They can't afford to keep unproductive drones through the winter, so they have all been thrown out. I saw one poor fellow trying to get back in, but he will never get past the entrance guards. If necessary they will sting him, but he can't retaliate as drones don't have stings.

The time has come for us to prepare the bees for the winter. We are leaving most of the honey in the hives now, just rationalising it so we can remove any surplus equipment. This reorganisation gave us about four pounds of the most delicious honey I've tasted for years.

**September 5<sup>th</sup>.** I returned the extracted frames for the bees to clean up. They need less space in the winter as the queen goes off lay. I strew the spare honeycombs with lavender, to keep wax moths at bay and wrapped them in black sacks, ready for winter storage.

As the weather has warmed up again, the bees are busy foraging. The hedge hums when I walk by with the bees and other insects feasting on the snowberry and ivy flowers. They make an excellent late forage crop along with garden flowers like sedum and cosmos daisies.

**September 12<sup>th</sup>.** We now have the hives arranged with a brood box and a honey super each. This provides enough room for thirty to forty pounds of stores, as well as the dwindling brood. They need this amount to see them through the winter months.

Hive one needs a lot of feeding because we have taken most of their honey off. The others will only need a very light feed; just enough to get some protective vitamin drops into them. The feed is thick sugar syrup, which we put into containers on top of the honey super. The bees will take three to four pints of syrup down into honey super overnight, leaving daytime free for foraging. We treated all hives for varroa mites again and have started the feeding programme.

I have reduced the size of the hive entrances to help defend the colony from robbers, such as wasps and other bees. Mouse guards have now been tacked across the entrances, to stop mice taking up residence in the lovely warm, well stocked hives. I found a woodpecker hole in one of the supers, which I will fill when the bees are no longer flying.

All we need to do next is to deliver one more dose of varroa drops into the brood of all hives and finish feeding them before the end of September. Then we can put our feet up till the spring and enjoy the delicious, golden flavours of summer.

**Val Hicken**

# Village Agent News

Sadly autumn is now setting in and there are various things to think about such as checking your Careline Alarm battery to see if it needs renewing and the same goes for smoke alarms. You only need to press your Careline button and talk to the operator to check if it is operating properly. Make certain there is enough oil in the tank for the central heating system and do remember to have your chimneys swept. Also, very important, for those who are eligible, are the Flu vaccinations starting in October. Please get in touch with your GP surgery to make an appointment.

Essential access to a public lavatory can be difficult for some, but providing you can show that it is necessary for you then a key can be bought to access disabled toilet facilities for £2.50 from Stroud District Council. Keys can be used throughout the country. Check details with Sue emailed

And finally...walking sticks can have an annoying habit of falling over when we lean them against something. Did you know that there is a special rubber ferrule that can be put on the end of the stick and which helps prevent it from falling? Anyone with a disability can buy one with a VAT exemption for just under £10.

**Do please telephone me if there is anything I might be able you with | T: 07810 630 145 | Sue Colquhoun**

## Stop Smoking ?

You've heard how effective hypnotherapy is for stopping smoking,  
and you're thinking about 'Stoptober'....  
but did you know that there is a Registered Hypnotherapist right here in Eastington?

**Hazel Rank-Broadley** DSFH DHP HPD  
tel 01453 791424      mob 0783 787 6901

You need only a single session costing £120 and you'll get a FREE CD to support your intention

[www.gettingclear.co.uk](http://www.gettingclear.co.uk)

**No article of part thereof may be reproduced or published without prior permission of the Editor and author.**

**The views expressed in ECN are not necessarily those of the editors**

# Children's Parties



## Bohemian Beads Children's Parties

Do you want an unusual and entertaining party activity for children?  
Then why not have a jewellery making party!

I teach brownies/guides too  
Please contact for more details  
07810015220

[info@bohemianbeads.co.uk](mailto:info@bohemianbeads.co.uk)

or

[www.bohemiankids.co.uk](http://www.bohemiankids.co.uk)

## COMPLEMENTARY THERAPY

In the comfort of your own home  
Mobile Complementary Therapist offering  
Reflexology, Aromatherapy and Reiki

6 years experience in a hospice

Working with patients carers and bereaved

For advice and appointments please call

Anita Harland 07977 137955



## ATTWOOLLS

Camping & Ski



Dome Tents, Frame Tents, Party Tents,  
Shelters & Gazebos, Accessories,  
Outdoor Clothing & Boots  
All at great prices

[www.attwoolls.co.uk](http://www.attwoolls.co.uk)

Skis, Ski Boots, Ski Clothing to hire or buy

A38 Bristol Road  
Whitminster, GL2 7LX

**01452 742233**

Open 7 days  
Mon-Sat: 9-5.30  
Sun: 10-4.00



## SEVERNSIDE OSTEOPATHIC PRACTICE



I am your local, friendly and professional Osteopath with over 30 years' experience. The practice is based in a rural and tranquil environment at Saul with plenty of parking.  
Osteopathy is not only for back pain, it can also help:

- Children - with growth and postural problems
- Women - before and after pregnancy
- The elderly - to reduce aches, pains and stiffness
- Sporting people

It is not possible to list everything, so please ring to find out if osteopathy would be helpful for you.

**Caroline Tosh** DO MSCC  
**T: 01452 740818**

Registered with the General Osteopathic Council

## Yoga



**Tuesdays 9.30 am**  
Leonard Stanley Village Hall  
**Wednesdays 8 pm**  
Leonard Stanley School  
**Thursdays 8 pm**  
Eastington Community Centre (OHMG)  
**Fridays 9.30 am**  
Leonard Stanley Village Hall

**£6 per class in advance, £7.50 per drop-in**

Carol Maguire tel: 791484 / 07814 341092

caroline.maguire2@btinternet.com

**www.carolmaguire.co.uk**

# OLD BADGER INN



*We are a dog  
friendly pub!*

- SERVING 6 REAL ALES & REAL CIDER
- COSY LOG FIRES
- GOOD QUALITY FOOD,  
USING FRESH LOCAL PRODUCE
- COVERED & HEATED PATIO AREA
- LARGE GARDEN WITH CAR PARKING



**2 MINS  
OFF M5  
JCT 13**

**TEL. 01453 822892**  
**WWW.OLDBADGERINN.CO.UK**

OLD BADGER INN, ALKERTON ROAD, SPRINGHILL, EASTINGTON, GLOUCESTERSHIRE GL10 3AT



## ZETA

PRINTING SERVICES

Telephone  
**01453 825047**



**Extensions  
Renovations  
Kitchens  
Bathrooms  
Tiling**

**T: 01453 823 686 ★ M: 07866 600 961**

**No obligation estimates and consultations**