

e a s t i n g t o n

COMMUNITY NEWS

Let's hear from YOU!

Contributions to ECN are welcome from anyone connected with Eastington Parish, past or present. Send your copy by email to the Articles Editor - ecn.articles@gmail.com

*The editor reserves the right to reject or shorten contributions.
The views expressed in ECN are not necessarily those of the editors.*

Next deadline for submission: Friday 18th September 2015

Next Delivery: Saturday 3rd October 2015

Diary Dates:**Sat 5th September 2.00 - 3.30**

Autumn Flower Show
Village Hall

Sat 12th Sept 10.00 - 4.00

Open Church and Tower Tours
Eastington Church

Friday 25th Sept - 7.30

Eastington Village Quiz Night
Eastington Community Centre

Sun 27th Sept - 10.45

Harvest Festival
Eastington Church

Fri 27th Nov - Sun 29th Nov

Christmas Tree Festival
Eastington Church

Every Wednesday - 7.00

Jolly Joggers
Meet at Eastington Co-op

Inside this Issue:

The community has been celebrating a number of events this summer... the school marked the retirement of Malcolm Strang and Elizabeth Greening with a surprise celebration (p22), and ECN celebrated it's 25th 'birthday' with cake and commemorative mugs (p4).

We've also been celebrating the defeat of Bath Road developers (p3), and Revd Richard Amys passes on his thanks for his final service at the end of May (p8).

We have an update about the work that has been done to sustain footpaths in the parish and a note of thanks to farmers and landowners for their help in keeping these routes cleared through cultivated fields (p10).

And we celebrate the life of 'Queen Madge', who lived in Eastington, and had a love of birds and animals. Read this fascinating story and find out how her solitary life in Steep Holme brought her to live in Millend Row (p12-13).

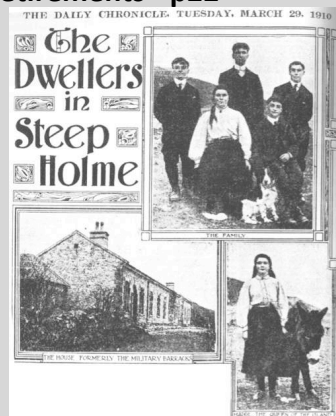
Read about Coneygree Orchard's new all weather path, and don't forget you can now buy locally made cider and perry direct from off-sales at Hazel Cottage (p19).



ECN 25th Birthday Celebrations - p4



Eastington School marks retirements - p22



'Queen Madge' of Millend p12-13



@eastingtonnews



Eastington
Community
News

**The content of ECN is not to be reproduced without prior permission.
Editor**

sign post



Advances in technology have changed the way we live and our expectations of what we want to do. The M5 motorway and its Junction 13 have transformed the way that we expect to live. We might enjoy the benefits of being able to reach far-off places as a common occurrence, but maybe dislike the motorway noise from everyone else doing that too.

Whatever the modern technology, there is usually a balance between the benefits brought, against some things we would prefer not to encounter. Many of us have benefited from Junction 13, but it is also a 'honeypot' attracting speculative development around it.

So, here we are again with another proposed development close to Junction 13. I'm not so sure supporters of Forest Green Rovers (FGR) are any keener on the idea to move their stadium here, than are residents living close to the site. Most of the campaign activity against the 100-acre development has so far been on Social Media like Facebook and Twitter, but maybe there will be something more in ECN next time.

Our new District Councillor, Stephen Davies, refers to this development in his letter, and rolls the implications of it together with the 'gathering storm' of the huge development west of Stonehouse. For certain the 'Don't Strangle Stroud' Group made amazing efforts to stop the 'West of Stonehouse' development, and you can read more on that and the FGR plan in Daniel James' article.

Occasionally the sun comes out, and the recent 'ray of sunshine' was the refusal of the Planning Appeal for 30 houses on the bend opposite Bath Road Garage. Tom Low explains the background to this and how the ruling will help safeguard the valued open spaces in all parts of our Parish. I would personally like to thank the dozens of you who

supported our campaign; firstly to get a proper 'Hearing' to determine the Bath Road Appeal; then to convince the Inspector of our valid case and to dismiss the Appeal. It would not have happened without you.

Changes and achievements over the past 25 years were brought home to me at the recent retirement party for Malcolm Strang and Elizabeth Greening. It was good to see so many familiar faces and friends celebrating the remarkable achievements of the Headteacher and Deputy Head, who over a quarter of a century, transformed the crumbling archaic buildings and invested such vitality into our children that Eastington School became one of the most outstanding schools in the country. I would like to extend a warm welcome to Ms. Zoe Avastu who will become the new Head teacher of Eastington Primary School and to wish the entire teaching team well.

Time now to look to the future and our aspirations for the next generation. With the barrage of development proposals for Eastington, it's sometimes easy to lose sight of the many good and valued things around us. Without properly listing such things it's unlikely these will be around for future generations to enjoy as Eastington surely grows. In 'Neighbourhood Plan speak', such things are known as evidence, and you will learn more about how to contribute to these in due course.

Planning what to do if a big development happens in Eastington is also vital for the Village School, because it's pretty clear that the current school site could not accommodate such a massive increase. I'm sure young parents will be eager to take part in shaping the future for our Village School, every bit as much as we did in the past.

Andrew Niblett - Editor

Andrew Niblett (Editor) | 824841 | niblett.parish@talktalk.net
 Chris Osman (Articles Editor) | 822060 | ecn.articles@gmail.com
 Tom Low (Distributor & Adverts) | 823425 | tom@hazelcottage.eu
 Website contact | info@ecn.me.uk

Keep Eastington Rural (KER) Bath Road Appeal Defeated!

environment

Residents supported by Government Inspector

Following a two-year campaign by residents, KER and the Parish Council, Bathurst Developers were defeated at Appeal in June when Government Inspector Mrs Miles backed Eastington's right to have open space between Alkerton and the other hamlets. Mrs Miles stood at the crossroads of the many footpaths in these fields and saw for herself how well trodden they all were.

Describing the layout of the 12 hamlets of Eastington – as always portrayed on the cover of ECN – as “an ancient and distinctive landform”. Mrs Miles has effectively stopped any large scale development which in-fills the gaps between hamlets. This is a major victory for the Parish following the disappointment of Swallowcroft last year and the incessant pressure from developers seeking to swamp our parish.

Ed Davies described in the last ECN how it felt to sit in the Appeal Hearing and all of the residents who supported their Parish that day, as well as those who wrote letters and on-line objections, should take a pat on the back. Whenever you feel the “Planners never listen”, remember the Bath Road Appeal.

Taking the Open Space forward

KER has been campaigning for the land between Alkerton, Middle Street, Cress Green and Millend to be protected for some time. It was an element of our defence of Swallowcroft and has been enhanced by the publication of a new planning law called “Local Green Space” or “LGS”.



LGS was an idea from the Localism Bill of 2012/13, which gives rural parishes the same kind of rights as an urban area has to designate Green Belt land.

It can only be created by way of a Neighbourhood Plan, which is why it has been incorporated on page 27, Map 5, Policy EP4.

It will be a matter for negotiation with Stroud District Planning Department as to how much of LGS A can be designated but this is our starting position!

Also being promoted for LGS status are

- Cotswold Avenue
- the Village Green on Claypits Road
- the field opposite (adjacent to the Grade II* Gazebo)
- historic village greens at Westend and Nastend

Implications for gaps between other hamlets

We are also looking at using LGS legislation to protect other valued open spaces, in particular we will be looking at the gaps between Nastend, Newtown, Westend and Nupend.

This is a more contentious area, being in the firing line for the proposed West of Stonehouse new town. However the Neighbourhood Planning Steering Group feel there is scope for using Mrs Miles judgement to ensure that gaps between these historic hamlets be respected, whether West of Stonehouse proceeds or not.

Tom Low | July 2015

community

25th Birthday Party for ECN Volunteers



For the first time in the 25-year history of Eastington Community News (ECN), we gathered all our volunteers together in the Village Hall. Despite atrocious weather, more than 30 people came to enjoy the company and the cake and to share ideas for the next 25 years' editions. All volunteers received a personalised commemorative mug recording their achievements, including the very first ECN editor, John Stayte. A special inscription saying: "I delivered them all" was presented to the 8 delivery volunteers still providing this public service after 25 years.

Pictured are (l to r) Martin Elliot, Mary Niblett, Maryann Parry, Lynn Williams, Reg Parry and Mark Wild.



Although unable to make it for the party, we caught up with our two oldest volunteers, Alice Elliot and Arthur Watkins to say "thank you" for their 25 years dedication. Both sportingly posed for these "mug shots".



**Jolly Joggers meet every Wednesday
7pm @ Co-op Eastington**



Why not come along and give Jollies a go!

Have a laugh get fit and meet new people.

Have fun in the fresh air, it's totally free and totally fabulous...feel your excess fat melt away and your confidence grow.

Beginners are welcome and we have faster more experienced runners who join us also, so please don't feel shy. Come on down and feel uplifted and revitalised! Get in touch for a chat.



**Eastington Community
Centre**

'Perfect for your special Party'

Modern attractive venue

**Fabulous setting with countryside
views**

(Fully Licensed Bar)

For more information and bookings

contact Vanessa on 01453 828557

Letter from your District Councillor

councils

Dear all

Well it is now over 2 months since I was elected and it has been a busy time where I have learnt a lot. I can honestly say that I am finding the role interesting and enjoyable.

The main issues remains planning.

On the Stroud District Council Local Plan we have now had a response from the Inspector. He has recommended a minimum of 11,4000 new dwelling (2006-2031.) This is consistent with the Plan now being proposed which does include "West of Stonehouse." Going forward there will be a further period of Public Consultation from the end of July to September. The Inspector will then complete his report, which is expected in late October.

No decisions have been made and there are many issues particularly around the transport infrastructure. I have recently met with the County Council Transport people to understand their plans. I believe there is work to be done now on the detail of all future plans and I am committed to engage in these discussions. This detail should include the proposals by Forest Green Rovers to move their Ground to Junction 13, which should have been announced by the time you read this.

More generally on Planning I am learning that this is often a contentious issue and it will be the case that on occasions you may disagree with me, but I do commit to represent your views even if they differ from mine, and have already done so at least once.

I have attended my first Eastington Parish Council Meeting and updated them on the Boundary Changes being proposed by the Electoral Commission. They have split Eastington and Standish and connected Eastington to Frampton, Saul and Arlingham Ward, which will be a 2 member ward. Let me know your thoughts on this.

Finally on a lighter note I missed the Duck Race (due to a family event) where we served the Community Orchard Cider, which went down very well. I did attend the William Morris House Fete which I found both fascinating and enjoyable.

As ever if there is anything I can do to help please contact me at cllr.stephen.davies@stroud.gov.uk or 07802 595 307.

Stephen....

Stephen Davies (District Councillor Eastington and Standish)



King's Stanley Village Hall

Large, modern village hall with a capacity of 200 people.
Excellent, up-to-date facilities, stage and bar.

The perfect setting for your
wedding, birthday or celebration.

Call Suzy Field on 01453 821 153
email: suzyfield@talktalk.net

www.kingsstanleyvillagehall.org.uk

Computer Help



**Experienced,
friendly help with
computer problems:**

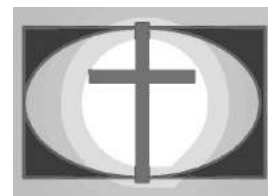


- **Windows/software issues**
- **Hardware repairs/upgrades**
- **Internet/Wireless/E-mail**
- **Virus & spyware problems**
- **Healthchecks**

Call Ben: 07970366686

churches

Eastington Methodist Church



In a well-known passage from Luke 11 vs 9 & 10 Jesus says: 'So I say to you: ask and it will be given to you; seek and you will find; knock and the door will be opened to you. For everyone who asks receives; the one who seeks finds; and to the one who knocks, the door will be opened.' What an offer! - but it is not unconditional. It is necessary to respond to the offer in the same way as a "buy one and get one free" offer doesn't do much for you if you don't buy anything. Over the next few weeks, the themes in our Sunday services will be based on various parts from the Gospel of Luke Chapters 11 to 14. We will be seeking to understand more – you are welcome to join us.

Café Church

The next Café Church sessions are at 11am on Sunday 2nd August and 6th September. The attendance of the August one will be augmented by young people, who will be coming to the end of a themed sleepover weekend (see below).

Eastington Methodist Church Activities	
Prayer Meetings	Tuesdays 8:15 – 9:00am and Fridays 8:30 - 9:00am
Line Dancing	Tuesdays 10:30am - noon
Lunchtime Bible Study	Tuesdays 1:00 – 2:30pm
Evening Bible Study House Group	Tuesday 8:00 – 9:45pm at The Pike Lock House
Youth Club (11-18)	Fridays 7:00 – 9:00pm
Café Church	First Sunday of the month 11am
Main Service (with separate activities for young children)	Other Sundays 11am
<i>Unless stated otherwise, these are held at EMC, which is opposite the butchers in Eastington. Some activities reduce or stop over the summer holiday period, if in doubt, please check our monthly PewsNews (also available online at www.EastingtonMethodists.org.uk) or contact us.</i>	

Youth Club Summer Activities

We now have some idea of what will be happening over the summer period. The 7:00pm Friday meetings are expected to run every week except on August 22nd and 29th due to there being too few leaders available to run it because of holidays.

Those now having left primary for secondary school are eligible to start coming to the youth club. Please note that we expect those attending to stay with us until 9pm when we finish. This is because parents need to have confidence that they know where their children are and that they are in a safe and supervised environment. We also need a form filled in so that we are able to get in contact if necessary. Sessions cost 75p, which does include a free drink, and there is a tuck shop.

We are organising day trips on Thursday 30th July and Thursday 13th August. The first is expected to be a trip to Southerndown Beach in South Wales (known to work well and popular) with a backup plan if the weather is not as good as we would like. We will be canvassing opinion as to where to go and what to do on the second day out.

There is also a themed youth sleepover planned for August 1st and 2nd at the church starting after lunch on Saturday and running through to Sunday after the Café style morning service. At least part of the sleepover theme will be the Holy Trinity – quite a deep subject but one actually suggested by the young people themselves.

As mentioned last time, we are taking a group to the Bristol District youth weekend which runs from Friday evening of the 16th October returning at the end of the afternoon of Sunday 18th. It's

churches

a while away but the organisers need to know how many are coming. This will be a fun packed weekend involving perhaps 80 or so young people from various church groups staying at Midsomer Norton Methodist Church in Somerset based on the theme of Heroes Who Rescue. There will be zorbing, wall climbing, a Big Hero Boot Camp, a "Black Tie" ResQ Awards ceremony and the opportunity to bring a fancy dress Superhero costume (optional). There will be some serious stuff too. We have taken young people to these events over the years and one of our local lads has been involved in its organisation this time. Highly recommended. The cost for the weekend including food and all the activities is £40.

More details and permission slips are available on request and at youth club for all of the above.

Hymn & Prayer

This is a meeting held at 2pm on the 4th Wednesday of the month in the community room at the Broadfield housing scheme (on the ground floor of the building that looks like its roof is on upside down). This is supported both by EMC and the Parish Church. It is ideal for those for whom water sliding and zorbing may have lost their attraction half a century ago or more. It is a time for reflection and singing well known hymns followed by a time to share memories and chat over refreshments. The next one will be on Wednesday 26th August.

Drop in Café

There will be a drop in café at the church on Monday 10th August from 2pm onwards. Please drop in for refreshments and chat.

Ken Burgin | Senior Steward | Ken, Beck & Liz Burgin | 01453 827414 | www.EastingtonMethodists.org.uk



ATTWOOLLS
Camping & Ski

Dome Tents, Frame Tents, Party Tents,
Shelters & Gazebos, Accessories,
Outdoor Clothing & Boots
All at great prices

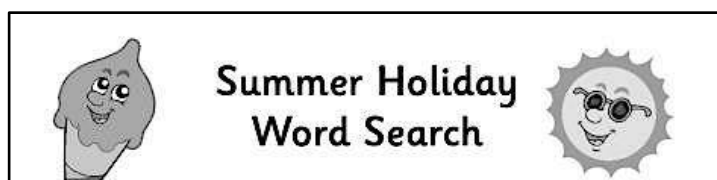
www.attwoolls.co.uk

Skis, Ski Boots, Ski Clothing to hire or buy

A38 Bristol Road
Whitminster, GL2 7LX

Open 7 days
Mon-Sat: 9-5.30
Sun: 10-4.00

01452 742233



Summer Holiday Word Search

v	g	j	j	o	u	r	n	e	y	v	g
s	f	i	m	v	s	w	i	m	c	b	h
e	u	u	c	b	k	d	a	v	n	e	o
n	z	m	n	e	h	g	e	g	j	p	t
t	p	u	m	e	c	o	q	n	n	o	e
j	c	o	s	e	y	r	m	p	b	s	l
t	e	n	t	y	r	w	e	q	v	t	u
s	u	i	t	c	a	s	e	a	s	c	r
r	l	s	q	i	c	k	t	q	m	a	h
f	a	i	r	g	r	o	u	n	d	r	i
s	g	f	a	m	i	l	y	n	g	d	w
f	o	n	h	s	h	w	r	p	a	c	k

fairground	family	fun	hotel
icecream	journey	pack	postcard
suitcase	summer	swim	tent

Copyright © www.ActivityVillage.co.uk - Keeping Kids Busy



Do you play or have you played cricket?

Eastington Cricket Club requires players of any standard for the 2015 season, with most Saturdays (league) and 'friendlies' on Sundays, midweek days and midweek evenings. We play and practise at Owen Harris Memorial Ground.

Any standard/ability is welcome, to keep our club going.
Please contact Steve Gallagher on 01453 791209

churches



News from Eastington Church

The Revd Richard Amys passes on a big thank you to everyone who came to his final service at the end of May, and for the generous leaving gifts, supportive messages and cards. Richard and Angela's move to Quedgeley went smoothly and have settled in very quickly.

Church life continues on and we are fortunate to have a committed and dedicated congregation to maintain the worship and fabric our church. We had over 40 people come along to our successful RSCM Music Sunday and Bring-and-Share picnic in June, and are putting on a similar event on to celebrate Harvest at the end of September. There are also numerous fund-raising events in September, October and November including a Christmas Tree Festival over the last weekend in November (more details in next edition of ECN).

Angela Reeder (01453 827446) – Pastoral concerns

Alec Jeakins (01452 883403) – Baptisms, Weddings and Funerals

Mike Naylor (01453 828682) and Jill Simmons (01453 825303) – Churchwardens

Website: www.cotswoldedgeparishes.org.uk

Twitter: Tweet and follow us @Cotswold_Edge

Facebook: Like us by searching for 'Cotswold Edge Parishes'

Upcoming Church Services in August and September 2015

<u>Sunday 2nd</u> <u>August 2015</u>	<u>Sunday 9th</u> <u>August 2015</u>	<u>Sunday 16th</u> <u>August 2015</u>	<u>Sunday 23rd</u> <u>August 2015</u>	<u>Sunday 30th</u> <u>August 2015</u>
10.45am Holy Communion (P Newing)	10.45am Holy Communion (J Aldis)	6pm Evensong (Lay-led)	10.45am Holy Communion (J Aldis)	10am Benefice Service at Moreton Valence (M Bennett)

<u>Sunday 6th</u> <u>September 2015</u>	<u>Sunday 13th</u> <u>September 2015</u>	<u>Sunday 20th</u> <u>September 2015</u>	<u>Sunday 27th</u> <u>September 2015</u>
10.45am Holy Communion (A Reeder)	10.45am Holy Communion (TBA)	6pm Evensong (Lay-led)	10.45am Harvest Festival and Bring-and-Share Harvest Lunch (Lay-led)

Eastington Church Choir are looking for anyone who would like to sing and be part of the choir for a number of upcoming special services at Eastington Church, including:

- Harvest Festival (Sunday 27th September at 10.45am);
- Remembrance Sunday (Sunday 8th November at 10.45am);
- All Souls (Sunday 15th November at 6pm);
- Carol Service (Sunday 29th November at 4pm); and
- Midnight Mass (Christmas Eve at 11.30pm).



The choir would be delighted to hear from anyone who would like to sing. Please contact Shirley at sj.baker@talktalk.net or Chris at chris.amys@hotmail.com or on (01453 821656).

churches

Open Church and Tower Tours

Eastington Church

Saturday 12th September 2015

10am – 4pm



Eastington Church is holding an Open Church event to raise funds for the National Churches Trust and Friends of Eastington Church On Saturday 12th September 2015 from 10am until 4pm. There will be refreshments, tower tours and church trails.

All the money raised will be divided equally between the National Churches Trust and Friends of Eastington Church, which will support urgent repair projects, enabling the church to remain open as a place of worship for future generations.

The Church will also be welcoming everyone who is taking part in the Ride+Stride, a sponsored bike ride or walk in which people from all over England walk or cycle between churches raising money for charity.

For more information, or to take part in the Ride+Stride, please contact Chris Amys at chris.amys@hotmail.com or (01453 821656).



Sunday 27th September 2015

Eastington Church

10.45am

Come along to this fun and enjoyable service of Harvest Thanksgiving led by the congregation at Eastington Church followed by a Bring-and-Share Harvest Lunch on Sunday 27th September at Eastington Church at 10.45am.



We will be singing popular harvest hymns, thanking God for our harvest, and praying for those less fortunate than ourselves.

There will be a collection for food donations, as well as a collection to raise funds for the local Foodbank.



Eastington Village Quiz

All Organisations, Groups and Individuals are warmly invited to take part in the fun and enjoyable Annual Village Quiz at

Eastington Community Centre

Friday 25th September 2015

7.30pm

Teams of 6 – 8 people
(Or make up a team on the night!)

Tickets £7 per person (includes Ploughman's Supper)

Bar available

Raffle

Please make sure you book your table by Saturday 3rd October 2015

Tickets available from:
Robin and Celia Harris (01453 823433)
Jacky and Mike Naylor (01453 828682)

All proceeds to Eastington Church Funds

g r o u p s

**Public Rights of Way Defenders –
PROWD**

Since I last wrote, we have had some helpful developments on some of our footpaths, and I would like to thank the Landowners concerned.

Firstly, the two footpaths at Pidgemore Farm (EST 58 and EST 29) have now been diverted to new routes that go around the farm. Thank you to Mr James for his co-operation.

Secondly, the footpath south west of Green Farm (EE 73) has had two new stiles erected either side of the track. Thank you Farmer Cozens for your help.

Thirdly, the footpath south east of Middle Street, towards the sewage works (EEA 65) has been given a 're-vamp'. Many walkers will know that during the winter-months cattle churn up the area and this path becomes a 'mud-bath' as you step off the footbridge into the field. I want to thank Farmer Clive Fawkes for allowing a drainage trench and a stoned section of footpath to be created in his field. I hope that this will alleviate the situation in winter - time will tell! Thank you Clive.

Thanks also to Alan Loveridge for doing the groundwork involved with such efficiency and high standard.

A special thank you must go to Farmer Roger Godwin of Longney, who farms land at Nupend and Nastend. He always makes sure that the footpaths on his land are "cleared" – every year. It is a joy to walk through the maize and wheat without any obstructions. You can see from the photo's what good footpath management can look like. Thank you Roger



I would also like to take this opportunity to ask Landowners to remember to keep the footpaths cleared where they go across or along the edge of cultivated fields. This will enable walkers to stay on the correct line of the footpath. Thank you.

Another 'ask' now! Could walkers try to carry a pair of secateurs with them when they go walking, to cut back any branches that may over-hang or impede a footpath? As with the pot-holes in our roads, there appears to be little work being done by AMEY (Gloucestershire County Council contractor) to clear our footpaths, so it's up to us to help ourselves! If you find a footpath that has become impassable, please let me know so that it can be reported.

As always, if you have any questions, or need any help with Public Rights of Way (PROW) issues then please contact me. Best wishes.

Bill Edwards | 01453 824452 | Edwards.parish@btinternet.com



nature watch

Beekeepers Diary - Val Hicken

June When we returned from holiday it was too hot and sultry so I left it a few days before checking the hives. On inspection today we found honey and contented healthy looking bees in hive two. They have a super almost full of honey, mostly capped (sealed in with wax.) When I scrapped the wax the honey oozed out so we don't need to extract it immediately. Instead we just put an extra super on for them to fill. Hive three is still a smallish colony, but they are making headway storing honey. We didn't look into the brood of either hive except to sprinkle some varroa drops in.

Hive one, which we always leave till last in case they are bad tempered, have swarmed right out. I am quite relieved really as we won't have to mess around with difficult bees anymore. There are still about four frames of bees left and no worker brood. There is some patchy drone brood, some of which is very young. I looked for signs of a laying worker. A laying worker will usually lay haphazardly with several eggs to a cell. We didn't spot a virgin queen. We decided to unite them with hive three. If you lay a sheet of newspaper on top of the resident bees and put the new bees above that, the new arrivals will chew through the paper. It prevents fighting as it gives time for the new bees' scent to dissipate. They settle down to live together harmoniously. Foraging bees will return to their original hive, so that's a bit of a nuisance

July 4th. I took 10 year old Rufin with me round to the bees to help. It was his first visit because I had deemed it too dangerous to take a child with me while the bolshy bees were there. Now they have swarmed out things are very peaceful at the hives again. Rufin was as good as could be and operated the smoker. I opened hive two purely because I knew what we would find in there, and I could use it to demonstrate the intricacies of life in the hive to him. He was riveted and of course he loved herding the bees around with smoke.

I only wanted to shake the bees who had returned to their original site back into hive three again. Rufin displayed nerves of steel when we had several hundred bees flying around us. He also survived the giant bee suit, rubber gloves and fur lined wellies that he had to wear in a very muggy twenty-six degrees centigrade.

July 15th. Nick and I went to tidy up the newly united hive and take the surplus brood box off the top. Bees were squeezing through a warped joint in the top brood box, using it as an entrance as well as using the main entrance. A surprise awaited us in the top box. There were young larvae and royal jelly sealed into queen cells, where should be none. I fail to understand why they are trying to make new queens in a hive that already has one. Are they trying to make queens out of drone larvae? Isn't there a laying queen in the colony already? We didn't know that to do about it. Have we accidentally introduced a young queen into a hive which already has a queen down below?

After shaking all the bees down into the hive, we removed that top brood box as planned. We'll go back in a few days and see what actions the bees have taken and take our lead from the bees. Will there be more queen cells above the queen excluder I really hope not.

Just when it seems plain sailing something often happens to confound you. That's the pleasure and the pain of beekeeping.

July 23rd. I gave varroa treatment to both colonies. When I opened hive two I found there weren't any queen cells above the queen excluder. There is quite a bit of honey in the hive, but not as many bees as I expected. I inspected the brood properly and discovered there was no sealed brood, but an area of unsealed brood, all drones, and a few empty queen cups. My guess is that they've swarmed and have a new queen just beginning to lay. I didn't see her. Just in case they are queenless I took a frame with day old larvae from the other hive so they can convert one of them into an emergency queen should they need to. They do this by feeding up very young larvae with royal jelly and extending the cell into a queen cup so there is room for a bigger bee to develop. If they already have a young queen they will simply adopt the new brood and it will boost their numbers.

I will go back and find out if they are making a new queen in a few days' time. If they are not making a queen I'll assume all is well.



our parish

'Queen Madge' of Millend by Stephen Mills

Readers will remember that the Sleeman name has cropped up a few times in previous editions of ECN, all in connection with Millend Mills' use as a maltings during the early part of the last century. Under the control of the head of the family, James Sleeman, the business operated at Millend until 1937, when bankruptcy finally closed its doors for the last time. But we're getting ahead of ourselves – this article is not about James Sleeman and his business activities, it's about his daughter Madge. For decades after James' death in 1938, she became something of a fixture of the village, one of those fascinating eccentrics no longer encountered in daily life. Like her four brothers James jnr, Tom, Oliver and John, she had a most unusual and interesting upbringing, something that undoubtedly influenced the way she approached life and the type of person that she became.

Her story really begins not in Eastington, but in Portishead on the banks of the Bristol Channel, where her father, James snr, was the manager of a newly-built mill. Madge's mother died in 1902 and the young siblings were then looked after by a series of relatives and housekeepers. Down the coast was Weston-super-Mare, and just off shore, the small islands of Steep Holm and Flat Holm. Remarkably, it was the former that was to become Madge's home for a number of years.

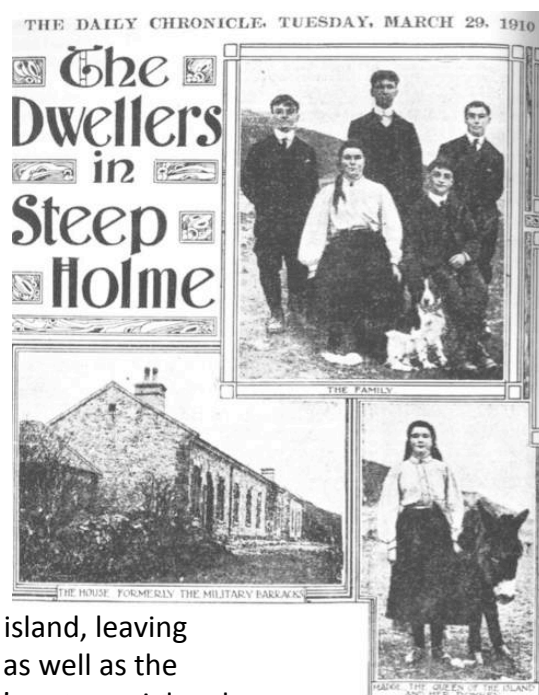
Up to April 1909, Steep Holm had been a military base, under the control of the army. When they vacated the island, they left behind massive guns emplacements, 7-ton iron cannons, and a large barracks building. Within a month, James Sleeman had negotiated a 21-year lease on the island and its associated fishery, at an annual rent of £30. On the 30th December, in the middle of a cold, bleak winter, the family moved to the island and set up home in the abandoned barracks.

Surprisingly, James snr. stayed on the mainland, while his five children and a female relative moved to Steep Holm. Madge had been born in May 1893, so was only around 16 at the time. The intention was that the youngsters would be self-supporting and earn a living through fishing, farming and keeping poultry. More than 100 laying hens, plus a number of goats joined the young Sleemans. Each owned varying shares in the chickens. By February 1910, they were selling up to 1000 eggs a month to local businesses on the mainland. They also grew their own vegetables. In April of that year, James snr. moved to Eastington, taking over the empty Millend Mill.

Meanwhile on Steep Holm, life continued for the five young people, with their unusual lifestyle. It was so unusual that it even attracted the attention of the national press. In March 1910, they were paid a visit by a reporter and photographer from the Daily Chronicle. The reporter noted that:

Madge, a pretty girl in her early teens, bore an air of queenly authority and the reporter had never before seen a more self-reliant band of islanders.

Two years later, in September 1912, John, Oliver and Tom left the island, leaving Madge and her brother James to look after the poultry and goats, as well as the vegetable garden. So now, it was just the two of them plus Madge's pet spaniel and the old donkey used to carry supplies up from the beach to the barracks.



The press came calling again. This time it was the Daily Mirror. Their article talked about the “Island king and queen – the boy and his sister who lived alone on the little island in the Bristol Channel”. The reporter wrote of:

Queen Madge, a pretty girl in her teens with a beautiful complexion and flowing hair. She discharges her domestic duties admirably with quiet ease and dignity. She is accompanied by her fowls, and her herd of goats adorned with fearsome horns follow her obediently, each answering to its name. Madge is passionately fond of animals, even the donkey, and they all vie with each other for a moment's companionship. She knows their every whim, what they like and dislike, and when she seats herself on a gun in one of the batteries to enjoy the sunshine, or sweep the seas with a telescope, the goats, the donkey and the Belgian hare wend their way from all parts of the island to form a cordon around their friend and benefactor, each anxiously waiting to be stroked and spoken to.

But at the end of 1912, they left the island and moved to Eastington to help their father and brothers run the business in Millend Mill. This had been bought by James snr. in 1910 along with 16 cottages (Millend Row) and a bakery. The intention was for at least some of the family to return to the island in the spring, but most stayed in Eastington, including Madge who acted as housekeeper, now looking after her brothers and ageing father. The outbreak of the First World War made life on Steep Holm more difficult as it was partially requisitioned by the Admiralty for the duration of the war.

Madge's life in Eastington

Madge worked as housekeeper and also helped run the mill. Later, as her father's health deteriorated, she also became his nurse. As the press reporters had noticed (and confirmed by villagers) her greatest love was for birds and animals - she had a “mysterious rapport” with them. Here, I can do no better than to quote from the Rendell's interesting book:

Villagers remembered that young blackbirds fallen from the nest were tamed by her, and perched happily on her shoulders as she cycled around on an old bicycle with her faithful spaniel sitting in a tomato box perched on the back... after the death of her father (in 1938) she extended her nursing care to other people in the village, and she is still remembered with affection by elderly Eastington villagers. As one expressed it: she was kind and well-liked – a lovely person.

‘Queen’ Madge died alone in her Millend Row cottage on 5th January 1996, aged 72. She is buried with her brother Oliver in the village cemetery.

Postscript In 1998, a social history website carried an email from someone enquiring about the Sleeman family in Gloucestershire. A lady from the Isle of Man (yet another island!) replied that her mother had known a Miss Sleeman during the 1950s. She lived in a little cottage behind the Mill at the bottom of Eastington. She occasionally babysat for her mother's friend who lived next door. Her mother recalled that Miss Sleeman had told her that when she was a girl, she had lived on a tiny island in the Bristol Channel, near Weston Super Mare. What an amazing coincidence!

Note: Stan and Joan Rendell's book *Steep Holm Pioneers*, was published privately in Weston-super-Mare in 2003. Both have had a long connection with the island and its protection

history

The Daily Mirror

THE MORNING JOURNAL WITH THE SECOND LARGEST NET SALE.

No. 2726 MONDAY, SEPTEMBER 8, 1912 One Halfpenny

ISLAND KING AND QUEEN: BOY AND HIS SISTER WHO LIVE ALONE ON A LITTLE ISLAND IN THE BRISTOL CHANNEL.



i n f o r m a t i o n

I came across someone who has a very good tip about how to take care that you have all the information you should have when you go on holiday abroad. She and her husband were staying in a hotel near the airport when he discovered he had left his drugs at home. She kept calm but what were they to do? Being a very efficient person she had a list of his prescriptions from the pharmacy, which the following morning the chemist in the airport was able to use. Quite a cautionary tale!

I have made a little list of things to remember when we go away. Here it is:

- Passport. Some countries require not only an up to date passport but one with at least 6 months before the expiry date on it. A visa may be necessary;
- Certificates of any injections needed;
- Prescription details;
- Health insurance documents;
- Any other insurance documents.

It is always advisable to have photocopies of all the above and it can be helpful to leave copies at home in case someone has to deal with problems for you.

Leave a note inside your suitcase with your mobile number, the addresses and telephone numbers of where you are staying and the dates you will be there.

If your suitcase gets lost this will enable anyone to know whose it is and how to get it back to you. It is helpful to have something which identifies a suitcase such as a ribbon attached to the handle so that it is easy to spot.

Try to make sure you have some coins as well as notes with you. Often you find you need these for trolleys, a drink from a dispenser or

even a motorway gate. It can be a good idea to take lip salve as lips can get dry when travelling and don't forget sun tan cream (if you are going somewhere hot!).

You are hiring a car don't forget your driving licence, and consider taking out insurance to cover the excess payable under the car hire contract.

If you would like any information about this or any other matter please contact your village agent.

Sue Colquhoun | 07810 630 145

Note from the Articles Editor:

You may be aware that from 8th June the paper counterpart of the photo-card driving license is no longer valid or issued by the DVLA. Paper copies can now be destroyed as any penalties are now recorded electronically. For more information go to:

www.gov.uk/government/news/driving-licence-changes

If you are hiring a car abroad you are now required to obtain a driving license 'check code'. This replaces the paper part of the photo driving licence previously required by car hire companies.. More information about driving abroad can be found at:

www.gov.uk/driving-abroad

E A R S Group**e n v i r o n m e n t****EARS – Eastington's Approaches to Reducing Speed of Traffic Through the Village.**

A very big **THANK YOU** to everyone who gave their support in our recent attempt at raising money for helping brighten-up our village as a means of reducing speed!

You may remember from reading the last edition of the **ECN**, that several members of our **EARS** group wanted to attend a local car boot, at which donations of bric-a-brac – from clothing, board games, cuddly-toys, books, pictures and sporting equipment etc – would be sold to help pay for floral displays in the village.

It's generally accepted by road traffic experts, that the more loved and welcoming a village or neighbourhood appears to the motorist, the slower drivers tend to pass through.

You may have noticed that a floral display has already appeared next to The Cross and is just one of the ways to reduce speeding traffic. We need to keep up this momentum with the next step being a proposal to site gates on the entrance to the village.

Well the good news is, that after such a generous response to our appeal for donations, we managed to exceed our hopes by making £220 clear profit at the car boot sale we attended at The Star Centre in Cheltenham on Sunday 5th July.

In the very near future, it's hoped we may be able sell any remaining items at a local fair or jumble sale.

A sincere thank you to everyone who got in touch and offered both their time and possessions and in helping make such a big difference to they way live our lives.

**David Aston | Pauline Allen
Jennie Corrie | Tina Davies.**

**WANTED**

Information on the Lime tree in the field (Home Close) opposite Bath Road Garage in Eastington.

It is understood to have been planted to commemorate a special occasion.

Do you know what that special occasion was?

If you do, please let us know.

Ed Davies | 01453 82100 | davies738@btinternet.com



nature watch

The newly formed Eastington community group for wetland plants and animals has yet to formally finalise its name, but PAWS will do for now - **Plants & Animals in Wetlands Society**.

Water is rarely very far below our feet in the lower parts of Eastington, which may explain the abundance of old ponds and damp places about us. Whilst we may prefer warm dry places, many creatures thrive in damp or wet places. Modern-day pressures on our time, and calls for increased efficiency, have led to a decline in the number of ponds and 'natural' places for water-loving creatures. So, it's important to safeguard sufficient places to ensure their survival. Ponds are of course vital to amphibians, but so too are the ditches and watercourses that drain the land. Also important are the refuges of piles of stones or wood, garden ponds, and the bottoms of hedgerows. Great Crested Newts (GCN) are the most well-known and high profile amphibian in this area due to them being a protected species.

An interest in the creatures that live in the ponds, ditches and other wet places has grown on several of us during the time we have lived in Eastington, and we decided to invite others to join us to investigate. Eleven of us met on Friday evening, 26th June with Richard and John of Stroud Valleys Project [both licensed to handle GCNs,] to lay some newt traps. Bright and early at 07:30 the following morning [pictured,] we returned to check and clear the traps. The weather was perfect and it was a very enjoyable first meeting of the group. We were lucky to find a male Smooth Newt in one of the traps, as

PAWS ...

we were late in the surveying season. Of course, we released it straight away after everyone had a close-up look at it.

We learned some new ideas for pond maintenance work needed to prepare for surveying next season. A few days later a female GCN came out from an old weed pile, and not so far from that several GCN larvae were discovered in a water pool. It pays to be observant when out and about.

It's been a long time since formal 'community' surveys were done on local ponds, so such work is desperately overdue. Some prospective developers have recently had to carry out surveys for GCNs because they are a protected species. Their results show they are still present and 'hanging on'; but only just. Although GCNs can still be found in some areas of Eastington, their numbers are very low. This is probably due to their main breeding ponds becoming overgrown, or running dry after egg laying. A significant amount of maintenance is well overdue, and it's hoped that volunteers of PAWS can help with this need. Following our first survey, a landowner has kindly agreed for some maintenance to be done on a key pond. Maintenance should help amphibians breed successfully again, and future surveying will measure the success of our work.

Although we have started in the south of Eastington, as we gain members and skills our intention is to expand to survey ponds in other parts of Eastington. If you are interested in joining us please contact me.

Andrew Niblett | 01453 824841



Eastington and Stonehouse Slimming World Groups

Wow celebrations galore! We have been enjoying a brilliant start to summer 2015.

Eastington group won team of the month in June. We also celebrated becoming a Silver group, which is an amazing achievement through the fantastic commitment from our lovely members.

All groups celebrated our 'Man of the Year' as well as our 'Diamond Target Members' at group. Stonehouse group goes from strength to strength as well, with brilliant weight losses among its members.

Other achievements include a group of us taking part in the Cancer Research 'Race for Life' in Gloucester and Cheltenham, some of us walking the 5km, some running, some enjoyed the muddy course and a couple completed the 10km! A few members enjoyed taking part in the 'Colour Run' as well.

In group itself we have celebrated fantastic weight loss awards, and we are supporting each other every step of the way on our weight loss journeys.

We have been sharing many recipe ideas and making sure no one is hungry, and that everyone is working towards their own personal weight loss targets.

The final service of our departing Rector Richard Amys took place on 31st May at Haresfield Church followed by lunch at Standish Village Hall. Support from the six churches in our benefice ensured a full house and gave us the opportunity of thanking Richard for his ministry over the past fifteen years or so and also to wish him and his wife Angela every future happiness following Richard's retirement.

Meanwhile it is business as usual. The congregation at our first service in June was swelled to about eighty in number by the Christening party on that day which has got us off to a good start. Later in the month we participated in the Royal School of Church Music's celebration of music in church on 21st June which was followed by a light supper.

We have events planned later in the year which will be advertised in the ECN including the Annual Quiz and new for this year a Christmas Tree Festival. Please also visit the Church's website at www.cotswoldedgeparishes.org.uk. Contact details for Churchwardens are: Jill Simmons 01453 825303 or Mike Naylor mike@mikenaylorsurveyors.co.uk 01453 828682.

groups

We have also welcomed new members each week as well as welcoming members back from their summer holidays.

We have enjoyed discussing lovely foods we can enjoy over the summer months, from bbq's to picnics, what to eat on days out with the family, or evenings at home entertaining.

Next week (29th July) we are having a food taster in groups to help share lots of fantastic ideas to enjoy over the school summer holidays, to keep us feeling full while slimming down beautifully.

So if you'd like to lose weight, eat well and feel supported every step of the way then call in to see us and find out more.

We meet at Stonehouse Community centre every Wednesday at 9.30am or at Eastington Village Hall at 5pm or 7pm.

I look forward to meeting you

Lorna | 01453 821751 | 0797 493 7830

Christmas Tree Festival

Would you or your organisation like to take part in Eastington Church's Christmas Tree Festival?

The Festival will run from Friday 27th November 2015 until Sunday 29th November 2015, and are planning to fill the Church with Christmas Trees.

Everyone is invited to take part. Trees may be real or artificial, with or without lights (no real candles please) and any size up to 2 metres. You are able to collect your Christmas tree at the end of the festival.

We invite contributors to decorate their Christmas tree on a theme and give a title – this could be a Christmas Carol, or something relevant to your family, group or organisation. A good means of advertising for your business. Visitors will be asked to vote for their favourite tree and a prize awarded to the most popular Christmas tree.

There will be a **Preview Evening on Friday 27th November 2015** between 6pm and 9pm, where Christmas drinks and nibbles will be served. Tickets are £5. One free ticket for each person/organisation entering a tree.

The **Festival Exhibition will be open on Saturday 28th November 2015 (10am-4pm) & Sunday 29th November 2015 (10am-4pm)**. Festival schedules and voting discs can be purchased for £2. Festive refreshments will also be available.

A **Carol Service** will conclude the festival in Eastington Church on **Sunday 29th November 2015 at 4pm**.

For more information or to state your interest, please contact Jacky Naylor on 01453 828682 or email at jacky@mikenaylorsurveyors.co.uk.

e n v i r o n m e n t

Neighbourhood Development Plan

Eastington's recent NDP consultation – a big thank you!!

We would like to thank all those who took the time and trouble to read Eastington's Draft Neighbourhood Development Plan (NDP) as well as sending in their comments & ideas. Some just read it, some read it & discussed with friends and neighbours, some attended discussion sessions, some completed a response form and either emailed it in or delivered it to a collection point – it doesn't matter how you took part but thank you for doing so!

This most recent phase of the required NDP consultation process closed after 6 weeks on 12 June and we are now working on collation of the details from within all of the 55 responses we received from you. This might not sound a very onerous task but the majority of response sheets contained many important & significant elements that need consideration. It will take some time to consider all your comments carefully and ensure that, where appropriate, the NDP properly reflects your views.

We are now 18 months into the development of Eastington's NDP and we have provided several important opportunities to involve local people to gain your opinions and ideas. We needed these to

gather the evidence, make decisions & develop policies to produce this document.

It is important to understand that we cannot, at this late stage, make 'major changes' to the document but we can make, and will be making, appropriate 'adjustments' on the many issues that you have raised. Some of you have asked how decisions were made – we will now explain this much more clearly within the body of the final NDP. There is a significant amount of additional information that is already contained within the supporting documentation and these will form Appendices to the NDP that will be submitted to Stroud District Council later this year.

For those who wish to see some of the 'supporting documents' they can be found on the website www.eastingtonndp.co.uk. These will be reviewed for relevance over the next few months and added to as required.

The finished document will be the subject of a final parish referendum at the end of this year – so please stay tuned to your Neighbourhood Development Plan.

Pauline Allen & Daniel James

Rubbish!

There is another bad outbreak of bin bags being ripped apart before the bin-men arrive the following day. For the second week running I have collected and cleared up the contents of someone's bag which were strewn about.



This time we spotted cattle eagerly eating rubbish strewn about the field behind us, and filled a whole sack with the rubbish. There were a lot of plastic bags and wrappers which could have done the cattle serious harm. What really worried me was finding a razor blade and similar items.

Where people are using a dustbin to protect the bag overnight, the problem seems to have been resolved. So, if you need to put out your bin bag the night before collection, please consider using a dustbin to protect it from vermin."

Note: We have been asked to mention to take care to feed the birds rather than vermin. Putting out waste food has recently been associated with encouraging rats and noisy and aggressive seagulls. **Ed**

Eastington Community Orchard (E C O) Group

g r o u p s

New All-weather Path for Coneygree Orchard



The final phase of re-surfacing the public permissive footpath in the Community Orchard has been completed.

On the left can be seen the last stretch of the sub-surface which has been consolidating since Easter. The upper part of the photo shows the finished article. This will be capable of taking kiddies buggies and prams, invalid wheelchairs and even mobility scooters. Unlike the woodchip we first had, it will be functional in all weathers

The whole project has consumed 12 tons of subsurface (Type One to be technical) and five tons of dust (3mm to dust). The Parish Council paid for the subsurface (Coneygree is rented from the Council) and ECO provided all the labour, transport and paid for the dust.

Our thanks go to Cotswold Canal Trust for sourcing the dust and to Andrew Cozens for lending his 3 ton trailer.



Next time you are out for a walk towards the canal, say, use our footpath and enjoy the patches of wildflowers and the young fruit taking shape on the trees.

Millender Cider and Perky Perry for sale

Don't forget you can now buy our locally made cider and perry which has been carefully matured for over six months in rural Nupend before being packaged and stored in Millend.

Regular Off Sales

Bottles, cases and party boxes are available from our Off-Sales department at Hazel Cottage, Millend. Ring 823425 in advance for best results, or e-mail tom@hazelcottage.eu



Sunny BBQ weather? Buy a party box for £28

Millender Cider and Perky Perry are also available in 10 litre boxes, that's 17 pints at less than £ 1.75 a pint.

Deliveries available by negotiation

events

**The 33rd Eastington Autumn Flower Show
OPEN TO ALL RESIDENTS AND MEMBERS OF ORGANISATIONS IN THE
PARISH OF EASTINGTON
To be Held in the Village Hall**

On Saturday 5th September 2015

2pm - 3.30pm

Admission 20p

RULES

- (1) The hall will be open to exhibitors from 9am on the morning of the show. All exhibits must be staged by 11am at which time all exhibitors must leave the hall. Presentation of trophies at 3.30pm - no exhibit to be removed before 3.30pm.
- (2) Exhibitors cards corresponding to the entries will be handed to exhibitors by the show secretary and exhibitors will be responsible for the proper placing of their cards with their exhibits. An exhibitor may only enter one exhibit per class. Each exhibitor using separate entry forms.
- (3) Exhibitors must provide their own bowls, vases etc for display of their exhibit. All exhibits entered must be staged.
- (4) The judges may modify or withhold any award if the exhibits do not merit the prizes offered.
- (5) Any unfair means to obtain a prize will forfeit all claims to prizes.
- (6) The judge's decision is final.
- (7) The committee cannot accept any responsibility for loss or damage to any exhibit or accessories to an exhibit. It reserves the right to move any exhibit to assist display.

CLOSING DATE FOR ENTERIES 11am, 5th September 2015

SHOW SPONSORS

Classes 23-26 sponsored by: R & C Harris
 Classes 27-36 sponsored by: KB Coaches, Eastington Tel:01453 8225774
 Classes 43-53 sponsored by: R & C Harris
 Section E & Classes 59-60 sponsored by: Mrs Q Jones
 Classes 1-6 sponsored by: R U Electrical Services, Eastington. Tel: 01453 821887
 Classes 7-11B sponsored by: Mr W Fletcher
 Class 12 & 22 A & B sponsored by: Borders, Lawns and Trees Garden Maintenance.
 Classes 13-17 sponsored by: Mrs R Barnfield
 Classes 37-42A sponsored by: Mr & Mrs J Underwood

TROPHIES

Stroud Building Society Perpetual Challenge Cup to the exhibitor obtaining the most points in the show.
 Presidents Perpetual Challenge Cup to the exhibitor obtaining the most points in Section C.
 Trophy to runner up for presidents cup.
 Presidents Rose Bowl to the lady exhibitor obtaining the most points in the show.
 Trophy to the runner up for the Rose Bowl.
 Dr R R Wethered Shield for the best exhibit in Class 34.
 The Bill Fletcher Shield for the most points in Section C.
 Perpetual Trophy for the most points in Section D.
 Perpetual Trophy for the most points in Class 55.
 The Neal Perpetual Trophy for the best exhibit in children's Class 56.
 Joan Parkes Trophy for the best exhibit in Section F.
 The Parish Council Trophy for best exhibit in Class 57.
 The Moss Trophy for the best exhibit in Class 58.
 Mr & Mrs J Underwood Trophy for the most points in Classes 37-42
 J Bridges Perpetual Trophy for most points in Classes 6,7,9-11
 The Chris Haines Memorial for best Orchid in Show, Class 42
 Best Runner Bean in show sponsored by Borders Lawns and Trees Garden Maintenance, Class 12.
 The Village Hall Cup awarded to best allotment – Class 62
 IN THE EVENT OF A TIE, TROPHIES WILL BE AWARDED TO THE PERSON OBTAINING THE HIGHEST NUMBER OF FIRSTS.

ENTRY FORMS ARE AVAILABLE FROM EASTINGTON POST OFFICE

events

<p style="text-align: center;">Section A</p> <p>CLASS</p> <p>(1) Potatoes - Kidney, Oval or Round, White - 4 (2) Potatoes - Kidney, Oval or Round, Red - 4 (3) Carrots - Long - 4 (4) Carrots - Short - 4 (5) Beet - Round - 3 (6) Onions - Spring Sown Flat - 4 (7) Onions - Spring Sown Globe - 4 (8) Shallots - Large - 8 (9) Shallots - Pickling under 1" - 8 (10) Onions - Large Dressed - 4 (11) Onions - Red - 4</p> <p style="text-align: center;">Section B</p> <p>(23) Pears - 4 (24) Cooking Apples - 4 (25) Dessert Apples - 4</p>	<p style="text-align: center;">Section A cont.</p> <p>(12) Runner Beans – 6 (13) Table Marrows - Any Size - pair (14) Plate of 6 mixed tomatoes (15) Tomatoes - Outdoor Grown - Red - 6 (16) Tomatoes - Outdoor Grown - Green - 6 (17) Tomatoes - Greenhouse - Red - 6 (18) Cherry Tomatoes - Greenhouse - Red - 6 (19) Cucumber - Ridge - 2 (20) Cucumber - Telegraph - 2 (21) Courgette, under 6" – 2 (22) Collection of vegetables - see rules below (22A) Children's Collection of Vegetables (Up to 16 years) – see rules below</p> <p>Collection of vegetable rules: 1 – Vegetables to be shown in standard size seed tray 2 – Pick 3 from the following vegetables: Potatoes(3), Carrots(3), Runner Beans (6), Tomatoes(3), Onions (3) 3 – Make sure you have the right quantity of each vegetable 4 – Parsley & raffia may be used to assist your display 5 – Carrots to be trimmed to 2 inches 6 – Larger trays or wrong amount of vegetables will be disqualified 7 – The judge's decision is final</p>
<p style="text-align: center;">Section C</p> <p>(26) Asters, Blooms in vase - 6 (27) Chrysanthemums, Any variety, Blooms -4 (28) Chrysanthemums, Any variety, Spray -1 (29) Dahlias, Pom Pom, Blooms - 4 (30) Dahlias, Decorative, Blooms - 4 (31) Dahlias, Cacti, Blooms - 4 (32) Gladioli - Spikes - 3 (33) Gladioli - Spike - 1 (34) Roses, Blooms - 4 (35) Rose, Bloom - 1 (36) Vase of cut mixed flowers, Quality of flowers only will be judged (37) Spray of Floribunda or Polyanthus Roses (38) Ladies Wedding Spray (39) Pot plant for flower (40) Pot Cacti (41) Pot Succulent (42) Pot Orchid</p>	<p style="text-align: center;">Section D</p> <p>(43) Home made Chutney - Pot (44) Home made Lemon Curd (45) Home made Jam - Pot of soft fruit (46) Home made Jam - Pot Stone fruit (47) One small pot - Any Jelly (48) Scones - Any variety - 4 (49) Small Tarts, Jam, open - 4 (50) Home made loaf, White using 1lb of Flour - 1 (51) Home made loaf, Brown using 1lb of flour - 1 (52) Victoria Sponge, 7" round - 3 eggs with their weight in fat, flour & castor sugar (52a) Cake made with vegetable i.e. carrot, beetroot, courgette. Decoration optional. (53) Fruit Cake, 7" round, deep tin, 6oz margarine, 5oz sugar, 3 eggs, 9ozs self raising flour, 10oz mixed fruit (incl. Cherries), 1 teaspoon salt, ½ teaspoon almond essence, 1 level teaspoon mixed spice, little milk.</p>
<p style="text-align: center;">Section E – Children's Classes Up to 16 years.</p> <p>(54) A picture colored to your choice (Available from the Village post office to colour during the summer holidays). Please write name and age on the back. (55) Animal made out of fruit or vegetables (56) A piece of jewelry made to your own design (57) Decorate a pebble (own design and choice of materials) (58) Fairy Cakes - decorated to your choice – 4</p> <p style="text-align: center;">Section F - Fun Section</p> <p>(59) Longest Runner Bean (60) Any other comical vegetable</p>	<p style="text-align: center;">Section F – The Eastington Allotment Society Section</p> <p>(61) Collection of the best produce from your allotment. Maximum of 5 items.</p> <p>(62) Best overall allotment – to be judged prior to show date.</p> <p style="text-align: center;">Section G – Homemade wine, beer or cider £25 gift voucher for winner</p> <p>(63) Bottle of homemade wine, beer or cider.</p>

s c h o o l s

Eastington School marks the retirement of its Headteacher Malcolm Strang and Deputy Headteacher Elizabeth Greening...

As many of you will be aware Eastington School is saying goodbye and good luck to its Head and Deputy Head. Elizabeth joined the school in 1981 as a teacher and Malcolm in 1990 as Deputy Head. Within a couple of years Malcolm became Headteacher and Elizabeth became Deputy Headteacher.

During his time at Eastington, Malcolm embarked on various projects for the local authority, including a secondment to the Link advisory team, during which time Elizabeth became the Acting Head. Malcolm successfully took Executive headship roles in local schools in need of support and guidance, alongside his role at Eastington.

Eastington School has seen many changes to its fabric during Malcolm and Elizabeth's tenure. Some of you will remember when the toilet block was outside, and the classrooms were predominately prefabs in the playground. One of their biggest achievements is the new hall, build in 2008, which has provided a better learning environment for the children, added to which, parents for the first time were able to enjoy class assemblies and the Christmas school performances now held at school. Each year since has seen a change; an outside play area, a playground sunshade, special lighting to support a child's need, a climbing wall; the list goes on...

One of Malcolm's talents is to persuade people to give up their time to work with and support the school, be it in the form of a Governor, on the Parents Association or people who 'can do stuff'! It doesn't matter if a classroom needs painting, a riverbank needs clearing, or a drain needs clearing, there will be a person who will come and 'do'. Some jobs of course could only be done by Malcolm himself, and many of us will have marked the beginning of Autumn by hearing the quiet hum of the leaf blower on a Saturday afternoon....

A repertoire of after-school clubs now operate throughout the school year, run by staff and parents, and children compete in various sporting and community events. A key event in the school calendar is the crowning of the May Queen where, as part of the celebrations, children danced around the Maypole ably coached by Elizabeth.

Of course it is also the little things that make the difference; there isn't a child's name that Malcolm and Elizabeth don't know, and probably the parents too, and it is this detail and care that helps to make the school a great place to be. Upon hearing of their retirement, I know of many children who have now left the school, and adults, have taken a wander to school to see if they can catch them to say thank you and good luck.

And so Saturday 18th July we said thank you to them at a surprise celebration of their time at Eastington, and we had our chance to thank them for their contribution to our community.



Many faces old and new and from both near and far; staff, governors, friends and helpers of the school, local authority staff and of course Nicola and Iona Strang, turned out in force to enjoy a lovely evening of food, drink and friendship.

We sincerely wish you both a happy retirement and a massive thank you!



Stroud & District Citizens Advice Bureau Needs Volunteers

citizens
advice

Stroud & District Citizens Advice Bureau (CAB) is calling for new recruits to join their volunteers and make a difference in the local community.

Last year, Stroud & District CAB relied on volunteers to campaign for change and to help people solve 9000 problems. The most common enquiries are about money, benefits, housing, relationship breakdown and employment.

Chief Officer, Sally Pickering said: 'The Stroud & District CAB simply couldn't function without the time and dedication of our volunteers. Our volunteers are a real asset to the bureau, and they get a lot out of working with us too. Volunteering can be a chance to use or develop your skills to help people resolve their problems.'

Julian said, 'Being a relatively young adviser, volunteering at the CAB has helped me to gain skills and at the same time I get a real sense of accomplishment from the work I do. I would highly recommend volunteering at the CAB.'

The CAB is looking for people who can spare 8 hours a week to join their adviser training course on the 23rd September. The training is very comprehensive and travel expenses are paid.

If you would like more information about volunteering for the CAB, contact Sandi Sorell on 01453 758 252 ext 202 or email Sandi on

sandi.sorell@stroudcab.org.uk.

If you need advice and or want more information about the Stroud District CAB you can check www.stroudcab.org.uk or ring 0808 800 0510.

community

Get yourself out of the house and come on down to TeddyTunes!

Fun musical coffee mornings with Vanessa and her guitar. Designed for parents and their children aged 0-5 years.

Come along to a TeddyTunes session...a warm welcome awaits...feel exhilarated and inspired with the joy that this wonderful musical experience will bring to you and your little ones.

Join Vanessa and her guitar for fun and frolics, learn to sing new songs and nursery rhymes. Relax afterwards with a cuppa and homemade cake, fruit and biscuits all in. It's a whole mornings entertainment!



Class Details

Nailsworth Tuesdays during term time - 10-11.30 Christ Church Rooms

Frampton Thursdays during term time
10-11.30 - Frampton Village Hall

£5 plus £1 for additional siblings. Pay as you go.
Start any week.

Tel. 07806 802540 vanessa@teddytunes.co.uk

Find us on Facebook www.teddytunes.co.uk



e n v i r o n m e n t

Stroud District Local Plan

The Public Hearing

The public hearings on the Stroud District Plan, in front of the inspector, concluded in the second week of June. The SPA team performed well and now we have to await the Inspectors decisions. He will obviously make recommendations for improvements to the plan. How significant these are remains to be seen.

The settlement in Eastington

The 'West of Stonehouse' (WoS) settlement in Eastington of 1,350 houses has yet to be determined; the decisions have not been taken, and will not be taken for some weeks yet. The Inspector has determined the housing need for the next 17 years to be 11,400. This is 200 higher than that proposed by Stroud District Council (SDC). This does not have any material impact on the plan as the additional houses are easily accommodated within the flexibilities contained within the plan. This now secures the 'five-year-Land-Supply' and so will make planning applications much easier to be refused by SDC on appropriate grounds. This is very positive news.

New Consultation

SDC will shortly go out for another round of consultation on these new numbers. It would appear extremely unlikely that these will be changed. We had one more opportunity to make representation at the beginning of July. Our final submission is on the SPA website for those wishing to read more (see: the website below). The Local Plan is likely to be signed-off in October or early November.

Bath Road Planning Appeal

The Parish won this appeal. (See Tom Low's report) The reasons for the appeal being dismissed are very interesting, but a key one was the need to secure the separation of the Hamlets, a very helpful decision, which will support us as we

oppose other wholly inappropriate planning applications into the future. Congratulations to the many dozens of people who contributed to this decision including to Ian Stuart, the parish's retained planning adviser, who prepared the Parish Council's submission.

Forest Green Rovers

Many of you will have read in the press that a planning application has been prepared for a new stadium for FGR, along with a business park for 4,000 jobs on a one hundred acre site either side of the A419 between the 'Little Chef' roundabout and the motorway.

This application demonstrates just how much the parish is threatened. This, with the WoS scheme, will generate up to 18,000 more vehicle journeys each day on the A 419, with the associated increase though the rat-run via Alkerton as people attempt to avoid congestion. Stroud Town will become almost inaccessible for large parts of the day and journeys to the secondary schools will take much longer. The centre of the district will start to move away from Stroud and towards this growing conurbation with further developments encouraged towards the Claypits and Whitminster.

Mr. Dale Vince will have received much encouragement for him to spend so much on a planning application, If approved this development will create a six mile urban sprawl from the motorway all the way to Stroud, almost closing this "gateway to the Cotswolds". This is despite this site not being part of the Local Plan. We should not underestimate the risk of this plan being approved.

Residents in Westend and Chipmans Platt are organising opposition to this application and they will, I am sure, welcome all the help they can get. www.strategicplanningalliance.wordpress.com

