

e a s t i n g t o n

COMMUNITY NEWS

Your news... your ECN!

Contributions to ECN are welcome from anyone connected with Eastington Parish, past or present. Send your copy by email to the Articles Editor - ecn.articles@gmail.com

Next deadline for submission: Friday 13th May

Next Delivery: 28th/29th May

The editor reserves the right to reject or shorten contributions.

The views expressed in ECN are not necessarily those of the editors.



PROWD walkers...



ECO labeled by 3-D printer!



Alkerton House in the 1960's



@eastingtonnews



Find us at
Love Eastington

inside this issue...**SIGNPOST**

- 2 From our editor Andrew Niblet

BREAKING NEWS

- 3 Old Badger CAMRA award
Community Land Trust
Grant received

COUNCILS

- 4 Parish Council update from
the Chair
5 Letter from your District
Councillor

CHURCHES

- 6-7 Eastington Methodist Church
20-21 St Michael and All Angels'

FUNDRAISING

- 8 Severn Vale Rotary Club
event

GROUPS

- 9 Eastington walkers -
PROWD group

- 10 Slimming World
Frampton Bowls Club
14 Jolly Joggers
Love Eastington
16 Teddytunes
Burial Ground Guidance
18 Don't Strangle Stroud
19 Eastington Playgroup

COMMUNITY

- 11 Gloucestershire Mobility
Cotswold Canals Trust
15 Dursley Library
17 IT schools Africa
22-23 Eastington Community
Orchard

OUR HISTORY...IN PICTURES

- 12-13 The rise and fall of Alkerton
House

PUZZLE PAGE

- 24 Farm Puzzle Sheet

Diary Dates

- 8th April** - Parish council candidates published
9th April - Severn Bore Family Breakfast - Severn Vale Rotary event
17th April - PROWD walk at 2.00 pm
5th May - District Council elections
8th May - 15th May - PROWD walk at 2.00 pm
21st - 29th May - Nailsworth Festival
4th June - The Grange Garden Party from 2.00 pm
23rd June - EU Referendum

The content of ECN is not to be reproduced without prior permission.
Editor

sign post



Welcome to our spring edition of ECN. Let's hope that warmer, sunnier weather will soon be with us. It shouldn't be too long before you are able to enjoy walking the footpaths again. 'PROWD' updates us with news of recently repaired paths.

With the right to walk designated paths comes the need to respect keeping close to them where possible. Let's also not forget that mowing grass is a crop on which someone's livelihood depends, so please pick up your dog's sticks to avoid damage to the grass cutting blades.

While on the subject of byways, I still remember the rough roads in France back in the 1960s, which seemed so primitive compared with smooth surfaced British roads at that time. Over the past 50 years good progress has been made to improve roads in France.

My first encounter with roads in Romania was more than 20 years back, and I soon learned the skill of driving to avoid abundant potholes; even their roads have improved now. How wrong I was to think it was a skill I would ever need in Britain. If we did not laugh at the many satirical stories about the dire, degenerate state of our roads, then tears might come to our eyes; along with damaged suspension, buckled wheels and ruined tyres. How ever did we allow such an essential amenity to decline so?

Most of us slept through the very heavy overnight rain on 8th / 9th March, until daybreak revealed some homes within an inch of being flooded. It's unclear how other parts of the village stood up to that downpour, or who has logged those incidents, but in Middle Street it would have been so much worse if the roadside ditches had not been cleared just a few weeks earlier.

Sincere thanks are due to Alan Spencer for taking initiative to do that work. However, many ditches and culverts remain in a dire situation. The poor state of three culverts under lower Bath Road caused the road to become flooded right up to the front doors of several homes.

If continuing neglect of ditches and culverts is not brought to the attention of those who can get some action, then homes will remain at serious risk of flooding.

The prospect of an 'ecology project' is mentioned in Parish Matters. This may build on work last year by the 'Ponds And Wildlife Society' (PAWS) and earlier work at the Allotment Pond.

Many people have a wealth of knowledge on important natural life in Eastington, and much enjoyment and heightened awareness could be gained by sharing and discovering such things together. Recording details in the right place about wild life, and where it lives, also brings significant benefits to those living here.

Those seeking to change or develop Eastington would have up-to-date information to guide them to respect the special places recorded. If you are interested in this project, please let us know.

We are grateful to Steve Mills for his article about Alkerton House; demolished to make way for the Swallowcroft estate back in the 1970s. As one generation takes over from the last we may just glimpse parts of a journey from heyday to decline.

Someone recalled the horses, Pilgrim and Goldie, in the stables, together with maypole dancing on the lawns of Alkerton House. It would be sad not to capture more recollections about its heyday, so if you have any memories or photos to share, please get in touch.

And finally.... In the last edition we reminded you that ECN aims to keep residents informed about local events and proposals. Having modernised the printed publication, this year ECN seeks to widen community participation and to balance content, rather than just relying on what gets submitted. That means seeking out things that have missed attention, which in turn means extra jobs for the ECN team.

It would be really helpful if you can share your ideas about this with us. And I would be really delighted to hear from you if you are interested in joining us to achieve this goal.

Andrew Niblett T- 824841

Eastington Community Land Trust (CLT)

The CLT Steering Group received a £4,000 boost in February, with the arrival of a grant from the National CLT Start-up Fund.

The grant will be used to incorporate the CLT Steering Group to become a fully registered Trust and be able to bid for affordable housing sites.

The Steering Group will be re-formed into a Board of Trustees, probably in the manner of a Community Interest Company (C.I.C), overseen by the Government Regulator.

Once the Steering Group has sorted out the processes to gain incorporation, a Public Meeting will be held to recruit additional members (there are currently 42) and elect Trustees.

Tom Low

breaking news



STOP PRESS

Old Badger wins CAMRA award

The Old Badger has won the Stroud CAMRA Cider

Pub of the Year award for 2016. Well done to Ellie, Julie and their team.

ECN will have a full interview with the successful hostesses in the June/July edition, along with pictures of their annual Beer & Cider festival on

Friday 29th April to Monday May 2nd

Tom Low

Do you tweet?

If so, please follow us at

@eastingtonnews

and retweet us to your followers.

We will not fill up your timeline with daily tweets, but we try to keep you in touch with all things Eastington-related - ECN news updates, special event reminders and notices.

Don't be left out!





NEWTAKE

— PHOTOGRAPHY —

PROFESSIONAL Studio PHOTOGRAPHY
In your own home.



- Family Portraits
- Pet Portraits
- 1-to-1 Tuition
- Courses
- Workshops
- Property
- Commercial

Contact us today:- **07958 705585**
enquiries@newtakephotography.com

Andrew Niblett (Editor) | 824841 | niblett.parish@talktalk.net
Chris Osman (Articles Editor) | 822060 | ecn.articles@gmail.com
Tom Low (Distributor & Adverts) | 823425 | tom@hazelcottage.eu
Website contact | info@ecn.me.uk

councils

Parish Matters



Spring is upon us! I hope you all had a good Easter and that the weather was as good as when I wrote this article. I think we are well overdue some dry weather.

A list of nominated candidates for parish councillors will be published on 8th April via the Parish Council website and noticeboard as well as on Stroud District Council's website. If there are more candidates than vacancies on the council (9) then we will have an election on 5th May.

The Neighbourhood Development Plan (NDP) is being independently examined during April and we look forward to receiving the examiner's report. There are several options, the examiner could approve (or reject) the NDP or there could be recommended modifications. All comments made during the latest public consultation go forward to the examiner for them to consider along with all the evidence collated by the NDP team to support the submitted Plan. Stroud District Council will be responsible for accepting any recommended modifications the examiner suggests, and then the NDP goes to District Councillors to agree that the plan should go forward for referendum in August. The Parish Council has been busy reviewing the planning application from Ecotricity and has major

concerns about the employment figures and transport assessment amongst other concerns. The Parish Council commissioned an independent review of Ecotricity's transport assessments, which is available on our website. We are also working with a planning consultant to prepare a comprehensive response on behalf of the Council.

At its last meeting Council discussed the possibility of purchasing defibrillators for the Parish, our Clerk is going to collect information on cost etc for our next meeting. If any of our businesses would like to be involved please do get in touch.

A group of people including our Clerk and a Councillor met informally with representatives of Stroud Valleys Project to discuss the possibility of maintaining ponds in the Parish, a report will be put to Councillors at our next meeting.

Muriel Bullock | Chair, Eastington Parish Council
01453 826172
murielbullock@gmail.com



www.facebook.com/EastingtonPC
[@EastingtonPC](https://twitter.com/EastingtonPC)

<http://community.stroud.gov.uk/eastington>



THE WORK OF YOUR LOCAL CITIZENS ADVICE THE CHARITY FOR YOUR COMMUNITY

Citizens Advice has been available in the Stroud District since 1958, providing information and advice for all on a very wide range of matters, particularly money advice - to help people manage their debts and maximise their income.

A leaflet, giving a little more detail of what we do, can be found in the leaflet enclosed in this edition of ECN; we do hope you will read it.

Citizens Advice is a charity and if you would like to contribute to help us maintain this valuable service, we would of course be delighted!

If you would like to know more or have any queries, please contact me on **01452 812128**.
Ann Horner, Chair of PR and Fundraising.

Letter from your District Councillor

Dear all

As I write this, the weather is improving, the days are getting longer and I am looking forward to eating too many Easter Eggs.

Since my last article the Council Tax Rate has been set. County Council set an increase of 4% that includes a ring- fenced 2% for Adult Care. Late in the process they received an additional Transitional Payment, which I am told will be allocated to Highways. Let's hope that the constant requests to fix the potholes in and around Eastington are finally heard.

Stroud District Council set its increase at 1.99%. This was after what was undoubtedly a difficult budget session but the decision was made after what I thought was a very responsible debate and with much agreement. Unfortunately this was not continued when the same meeting then went on to discuss Transatlantic Trade and Investment Partnership (TTIP) and the Trade Union Bill, which whatever you think on these issues are not something Stroud District Council can do anything about or what I believe I was elected to discuss.

The new Green Waste Scheme is being rolled out and I would be interested in any feedback, positive or negative.

It is good to have got this far into this article without mentioning planning but it couldn't last. On the Ecotricity proposal, I and others have asked that they extend the traffic modelling beyond Chipmans Platt

Roundabout; having been very disappointed by the presentation they did at the recent Parish Council meeting. They have agreed to extend the traffic model but have given no timescales. I still have many concerns about this application including traffic and the need for additional employment sites beyond those identified in the recently approved Local Plan. I recently met with Jamie Mattock at County Highways to discuss my concerns.

Finally there are a number of Elections coming up,

May 5th: District Council where the whole Council is up for re-election. I will be standing to represent Eastington again, which will become part of the Severn Ward in the Boundary changes.

May 5th: Police and Crime Commissioners Election

June 23rd: EU Referendum

If you are not currently on the Electoral Register you will need to register by the 18th April. You can do this at www.gov.uk/register-to-vote or call Stroud District Council Election Helpline 01453 754 886. If you require a Postal Vote the Deadline is 19th April.

If you have any comments or questions, please contact me on:
cllr.stephen.davies@stroud.gov.uk or 07802 595307.

If you need anything else let me know.
Stephen....



Nailsworth Festival 21st – 29th May 2016

If you would like to become involved with the Festival or explore sponsorship options, please contact Mary Saunders, Chair of the Festival committee on 01453 832749.

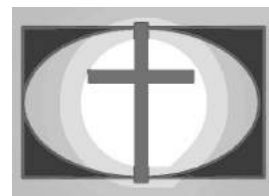
A full programme of activities will be on the Festival website www.nailsworthfestival.org.uk.

You can also follow the Festival on Facebook and Twitter.

Tim Hughes | Publicity | 01453 836993

churches

Eastington Methodist Church



Eastington Methodist Church Activities	
Baby & Toddlers Group	Mondays 10:00 – 11:30am
Prayer Meetings	Tuesdays 8:15 – 9:00am & Fridays 8:30am – 9:00am
Line Dancing	Tuesdays 10:30am - noon
Lunchtime Bible Study	Tuesdays 1:00 – 2:30pm
Evening Bible Study House Group (Christianity Explored Tuesdays 7:30pm-9:30pm)	Tuesday 8:00 – 9:45pm at The Pike Lock House
Tiny Tigers Toddler Group	Wednesday 9:30 – 11:30am at Whitminster Village Hall
Youth Club (11-18)	Fridays 7:00 – 9:00pm
Main Service (+ children's' group)	Sundays 11am
<i>Unless stated otherwise, these are held at EMC, which is opposite the butchers in Eastington.</i>	

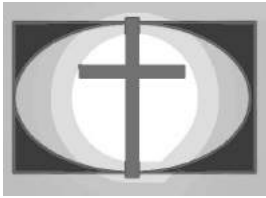
Christianity Explored & Youth Sleepover

Our March Café Church coincided with a youth sleepover. The theme was "Identity: Who Is Jesus?" and the young people acted out the story of Jesus calming the storm using puppets which went very well - especially considering the relative lack of sleep over the Saturday night.



The April Café Church at 11am in Sunday 3rd April will be covering the subject "Sin: Why Did Jesus Come?" This will be followed up on Tuesday 5th by two groups. The first meets at the church at 1pm, where a buffet lunch is provided, and finishes at around 2:30pm.

The second group meets at The Pike Lock House (GL10 3RT) at 7:30pm, where a selection of puddings will be on offer, with an expected finish time of 9:30pm. Each month is more or less standalone so, if you have not been before, please don't let this stop you now – you will be very welcome. The May ones on Sunday 1st and Tuesday 3rd will be covering "The Cross: Why did Jesus die?".



churches

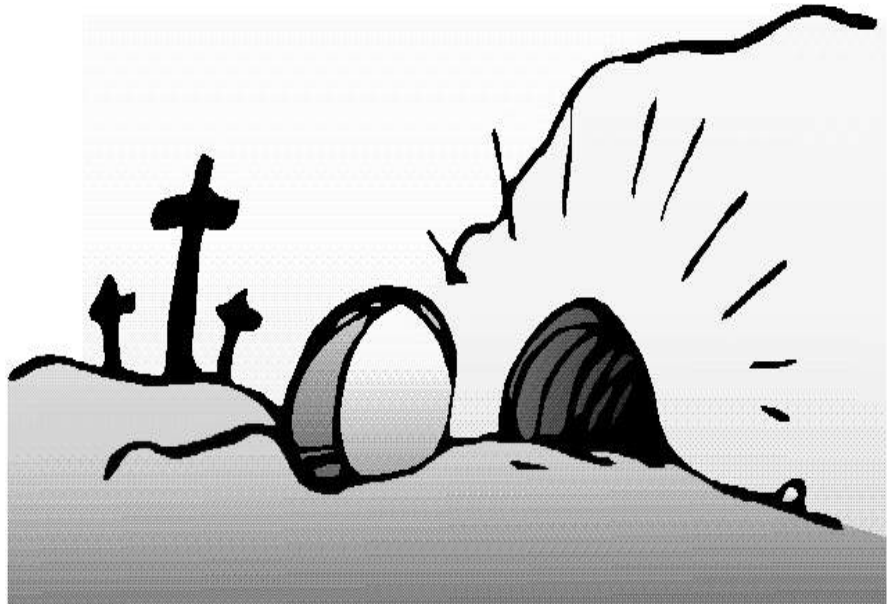
Eastington Methodist Church

Good Friday (March 25th)

Our minister, Rev Graham Miles, will be conducting a service of reflection at 10:30am.

Easter Sunday (March 27th)

Our Easter celebration will take place at 11am. Come and share in the joy of Jesus' resurrection from the dead – warning, likely to involve lively songs!



Messy Easter

We will be holding a Messy Easter event at 10am on Wednesday 30th March at the church. This will provide the usual mix of craft activities, a song, some sort of talk and/or a video followed by a delicious selection of free home made cakes. This is suitable for all ages.

Hymn & Prayer

For those who would prefer a quieter opportunity to worship, you might like to come to Hymn & Prayer which is held on the fourth Wednesday of the month at 2pm in the common room at the Broadfield sheltered housing scheme. The next two will be on 27th April with Howard Miles leading and 25th May with Beck Burgin. There is a chance to stay chat over tea and biscuits afterwards.

Youth Club

Please note that there is no youth club on Good Friday. There is also not one on Friday 8th April because most of the leaders will be at the Spring Harvest Christian event at Butlins with some of the young people.

Ken Burgin – Senior Steward

Ken, Beck & Liz Burgin 01453 827414

www.EastingtonMethodists.org.uk

fundraising



SEVERN BORE FAMILY BREAKFAST



SATURDAY 9 APRIL 2016

one of the biggest tides of the year

at 10 am (+ / - 20 mins)

at Hill Farm, Longney, GL2 3SW

follow the signs from "The Pilot" & A38

Bacon rolls, coffee etc available
from **9.00am**

Free car parking

Come and join us to see where river scenes from
BBC TV's Wolf Hall were filmed.

In aid of Rotary Charities



THE
ROTARY CLUB
OF SEVERN VALE



For more information
www.severnvalerotary.org.uk

Registered charity number 1100046

Eastington Walking Group

groups



Just when we thought that spring had arrived, and Mothers Day was here, back came the cold winds and the rain! Well, let's hope that by Easter, the weather is more settled, the trees start showing their leaves, and we can get out for some interesting walks.

The walking group met on Sunday 21st February and we walked to Nastend and Nupend. The weather was a little unsettled, but it was an enjoyable walk and some members returned to the Old Badger afterwards. The group ranged from three years old, to some walkers in their seventies! A few days later, Julian volunteered to help me clear footpath EEA26 in Nupend, and a new sign is to be fitted to the post to replace the one that was destroyed by a hedge flailer.

Network Rail have up-graded footpath EFR23 in Frocester and replaced a broken stile. This has made the crossing a lot safer and user friendly. Thank you to Richard Atkinson. More footpaths in the Frocester and Coaley area need to be up-graded, as these are lovely areas for walking. The County Footpaths Officer has been informed and is prepared to help.

The walk on Sunday 20th March took the Group to Cambridge (on the A38) where we had a short break, and then returned. The walking group now

has about 40 people regularly turning up, so this is a good time to remind farmers and landowners to please ensure that all footpaths are properly cleared for walkers to use. We are all from the same community, so let's help each other to enjoy the countryside.

Next walks: Sunday 17th April and Sunday 15th May at 2.00 pm - details to follow



Bill Edwards
Public Rights of Way Defenders (PROWD)

groups

Eastington & Stonehouse Slimming World

Spring finally seems to be appearing and the days are getting longer. It's lovely to think that summer is on its way, holiday season, BBQ parties and lazy evenings. At our Slimming World groups we're thinking about how we want to look and feel during this summer season, how much weight we would like to lose to feel cooler, fitter and healthier.

All groups are busy and welcoming new members each week and celebrating existing members weight losses. We're learning about healthy eating and sharing lots of lovely meal ideas. Supporting each other with our food and drink choices to achieve the weight loss we want while feeling full and satisfied.

We've starting thinking about summer eating. One of my favourites is Sticky Chicken: roasted veg - peppers, onions, tomatoes, homemade Slimming World coleslaw and spicy potato wedges or fresh herby new potatoes. Delicious and yes you can eat this and still lose weight.

Slimming World is also participating in Public Health England's 'One You' campaign. The campaign is to encourage and support people to live longer, healthier and happier lives. Details are on our national website.

Over the next couple of weeks we'll be having fun planning menu ideas for the Easter weekend. Group is such a brilliant place to be and its amazing hearing all the different menu ideas. The list is endless as there is so much you can eat while following our Food Optimising plan.

So would you like to come and join us? Get the weight loss you want to enjoy the summer ahead. Come along to one of our groups to find out how to start your weight loss journey. I look forward to meeting you. Men and Women welcome and we also have our GP approved plan 'Free to Go' for our 11-15 year olds, which is all about learning healthy food choices.

We meet at Stonehouse Community Centre 9.30am on Wednesdays as well as Eastington Village Hall 5pm or 7pm on Wednesdays. I look forward to meeting you.

Lorna 01453821751 or 07974937830



Frampton on Severn Bowls Club

The amount of people who know somebody who bowled or had a relative who bowled is very common. The game has moved on in recent years and the age span of bowlers particularly at Frampton ranges from 15 to 85!

We are a successful club with around 60 members (male and female) and we have one of the best greens and clubhouses in the county.

The green opens mid April and is busy right through to mid September. Every week during the season there is something going on - cup games, league games, club competitions, fun days, and friendly games against neighbouring clubs. Something for everyone whether you are a beginner or and established bowler.

Why not come up and have a go. We can lend you a set of woods and footwear (trainers are ok). The green is open most days from midday onwards.

Please contact our Club Secretary Tom Griffiths on 01452 740219 and he will organise for somebody to meet you at the Green.



community

Fancy doing something different in 2016?

Watch the world float by and energise your mind with good company and conversation just a short distance from your home.

The Cotswold Canals Trust Canalside Visitor Centre at Saul Junction has been a hub for local people and visitors alike since 2002.

Come and join the team

Run entirely by volunteers, it is a place to chat over a cuppa and pass on information about the local area.

We are looking for local people to increase our team of volunteers to chat to walkers, cyclists, boaters, dog walkers, day visitors and tourists. We offer complimentary tea and coffee and like to make people feel welcome.

Frequently asked questions

'Which is a good way to walk?'

'Where is the nearest pub for a snack?'

'Can I buy an ice cream here?'

We would love to meet you either, as our next visitor, or as a prospective volunteer.

So, if you fancy a cuppa and chat in a waterside paradise, come to Saul Junction. It is very near.

If you would like to join a 'Come and Try It' session for volunteers

Please call Jill on 07974 687 993

Opening Hours

Saturday 12.30 – 5pm Sunday 10.00 to 5pm

Weekdays — whenever the green flag is flying

GLOUCESTERSHIRE MOBILITY COMMUNITY INTEREST COMPANY

Gloucestershire Mobility Community Interest Company is based in Quedgeley, Gloucester. We are a **not for profit organisation** and all monies are fed back into the company to ensure it can continue its community work within Gloucestershire.

We work with disabled people who are looking to gain experience in the workplace, and provide work placements so that those attending can experience a range of work related skills including; workshop, retail and administration. The project is supported by Gloucester County Council.

We operate a mobility equipment recycling project where we welcome donated mobility equipment in any condition, and can collect from any location in Gloucestershire. We offer sales, servicing and repairs to most types of mobility equipment including new and used scooters, stair lifts, manual and power chairs, rise and recline seating, patient lifting hoists and stand aids.

We have recently been awarded the contract to service and repair the equipment for Gloucester Shopmobility, and are working closely with them to increase the range of equipment and services they provide.

We can provide mobility equipment training on a one to one basis or for groups who may wish to improve their skills in operating Mobility scooters and power chairs safely; or for those who are considering purchasing their first scooter and want to experience it before they decide. We offer free no obligation home visits to those who are unable to visit our premises, and we also provide free advice and information.

The unit is currently open by appointment only Monday to Saturday.

For further details, to donate equipment or to book an appointment contact us on 01452 341672 or 07811 765257 email: glosmob@gmail

our history

The rise and fall of Alkerton House by Stephen Mills

People settling in Eastington after 1970 may be unaware that Swallowcroft was built on the grounds of what was once quite a grand residence. This was Alkerton House and it faced across the lane towards Alkerton Farm. It was originally built at some point in the latter part of the 18th century, although its origins may have been further back in time, as parts of the house apparently incorporated stonework that survived from an even earlier building. Before its demolition in 1970, there were also traces of what was thought to be a moat that once surrounded the earlier house – it's possible that these were remnants of the 'manor house of Alkerton', recorded as far back as the 14th century. Alkerton House, in its final guise, was described as being built of brick faced in stucco, with wall pilasters and a central pediment.

Surprisingly little of its early history seems to have been recorded, although Slater's 1859 Directory of Stroud District recorded that a Mrs Sarah Smyth was living there at the time. The directory also noted the presence of the Keys family in the village – various family members traded, farmed and came to own local properties. In that year, for example, Alfred Keys was listed as a baker, flour dealer and shopkeeper, and Charles Keys as a shopkeeper.

In 1909, an Alfred Keys was living in Alkerton Farm and was recorded as a farmer and cider maker. He also owned various cottages and houses around the village. Quite possibly, some of these were tied workers cottages housing his farm labourers. It's also likely that at least some of the cider produced was provided to the workforce. The Keys family subsequently moved out of Alkerton Farm and across the road to Alkerton House. The house's final occupant was a later Alfred Keys, author of the sole book on Eastington's history (first published in 1953 and republished in 1964). Alfred lived in the house until its demolition in 1970, when the site was

cleared in readiness for the construction of Swallowcroft. By this time, by all accounts, it was in a fairly sorry state – the upkeep of such a large, underused house must have been far too much to carry on with, so the bulldozers moved in and within barely more than a week or two, it was gone. Mr Keys had a small bungalow built roughly within the footprint of the house, where he then lived for some years.

There was a second major building that survived for a few years longer. This was a substantial stone-built stable and coach house that stood at the back of the site, roughly opposite the former Eastington News shop. In later years, this must have served as a garage as it contained a hoard of old abandoned cart and car parts, wheels, and even several spare unused ornamental chimneys for the main house. These now grace a cottage in Shipton Oliffe in the hills above Cheltenham. For a few years, the coach house stood abandoned as the surrounding orchard was grubbed up and Swallowcroft went up around it. It was rumoured to have been sold – dismantled and moved elsewhere. Older residents will also remember another feature that once stood in the grounds – the famous whale bone arch, made from the jaw bones of a whale that met its end on the banks of the Severn during the 19th century. This also disappeared, only to come to light many years later in Whitminster. It's now stored in Eastington waiting for the day that it can re-emerge.

Like its predecessor, Mr Keys bungalow was eventually demolished and new houses built on the plot. The large stone cider mill that formerly stood in its front garden as a reminder of the family's former cider making prowess disappeared, presumably sold off and moved elsewhere. Today, there is nothing left that gives a clue to this grand house that once dominated the centre of the village.

in pictures



Alkerton House, 1960s –
looking a bit shabby

A sad end. Part way through the demolition,
ready for the start of building Swallowcroft




Looking towards the Co-op,
probably 1950s.

The rear of the main house is
visible (centre left), as are
some of the various
outbuildings and the coach
house/stable (centre right)

groups

Jolly Joggers - now recruiting new beginners

We meet every Wed 7pm at Co-op during term time...check out our Facebook page for the latest info. 

Feeling shy?.....don't be
Feeling fed up with your weight?...don't be....
Feeling unsure? ...please don't be!

We are waiting to welcome you...just come along with your trainers and comfortable clothing.

Start off by walking briskly and who knows where it will take you! We have fast runners if you really need to push yourself and I will be there with you the whole time to take it as fast or slow as you need.

We are a friendly group who are extremely supportive and FUN...so what are you waiting for...
pick up the phone and give me a call **07806 802540**.

Bye for now Vanessa.



Love Eastington?

Then come and join in the conversations
at '**Love Eastington**' on **Facebook!**

Over 650 Eastington residents have already joined
and Eastington-related posts are welcome from all
group members.

ECN will be contributing with news updates, special
events, reminders and notices.

If you don't already have a Facebook account,
this could be a good reason to start one!








Weekday Offer
Buy 1 hot drink,
Get one FREE
With this voucher

Mon-Sat: 9-4
Sun: 10-4.00

01452 742248
Bristol Road, Whitminster,
Glos, GL2 7LX



Village Agent News

Information from Dursley Library

For Children

Storytime (during term time only) Tuesday afternoons at 2pm and 3.45pm

Baby Bounce and Rhyme –Thursday mornings at 10.30am

For Adults

Knitting Group Wednesday mornings from 10am till 12noon

Library Club Held on the 2nd Monday of each month, please contact library staff if you require transport

Housebound Home Delivery Service – If you are unable to get to the library we have a small group of dedicated volunteers who will deliver books for you.

Rag Rug group –bring along your unwanted material and we will provide everything else needed to make a small rag rug Every Monday at 3pm

We also have a 'Computer Buddy' who can help you with learning to use a computer either on one of our library computers or if you need help with an ipad or portable advice bring it into the library. We have FREE wifi. Please see one of the library staff if you would like to book an appointment. All the above are completely **FREE**

community

We have an exciting event coming up on Friday 22nd April a performance by the 'Spaniel in the Works Theatre company which concentrates on Gallipoli and some of the forgotten stories of World War One. This will be held upstairs in our spacious meeting room at 6.30pm and is completely **FREE**

If you don't manage to get to the library as often as you'd like why not download the Library app onto your portable device. You use this to order any book from our extensive catalogue, to renew your books and generally manage your account. It's **FREE**

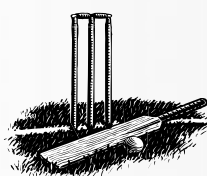
We also have a great range of magazines that you can download onto your desktop PC or portable device, from 'Hello', 'Good Housekeeping' and 'History' magazines are just a few of the titles. Completely **FREE**

If you are interested in tracing your family history you can access Ancestry.co.uk from our library computers with a library account for **FREE**. It's best to book a computer as they are often busy.

If you'd like to join the library then you can also of course borrow any book from our wide range of fiction and non fiction titles or order a book from any library in the county.

We look forward to welcoming you at your local library.

Should you wish to contact me, please do so on 07810 630145 | Sue Colquhoun



Do you play or have you played cricket?

Eastington Cricket Club requires players of any standard for the 2015 season, with most Saturdays (league) and 'friendlies' on Sundays, midweek days and midweek evenings. We play and practise at Owen Harris Memorial Ground.

Any standard/ability is welcome, to keep our club going.
Please contact Steve Gallagher on 01453 791209

groups

Teddy Tunes

Many studies have linked musical learning with language skills. Not only that but it can be a wonderful bonding experience for both parent/grandparent and child, allowing your child to express themselves creatively while learning through music and movement.



Children learn much faster when they're having fun as we all know...and we certainly have a lot of fun at Teddytunes! Time is spent on encouraging the child's natural development through fun musical experiences, whilst not compromising the child's need for freedom and expression.

We've got it all going on at Teddytunes. Yummy homemade cake and all kinds of exciting things to shake and bang, bubbles, parachute and dancing.... it's a wonderful social club for the parents and grandparents as well. These early years spent with our children and grand children are very precious and pass by so quickly...so why not come along and discover a fun musical experience...we look forward to welcoming you!

Just come along any week, no sign up and no obligation. Please find us on Facebook or www.teddytunes.co.uk

Tuesday term time Christchurch rooms Nailsworth 10-11.30

Thursday term time Frampton village hall 10-11.30

£5 for first child and parent £1 for each subsequent sibling child or adult.



Do you tend a family grave in Eastington?

The Parish Council has recently updated its Burial Ground Guidance which can be found in full on its website - this will also be posted on a notice board in the Burial Ground.

Please read them carefully as it will help us keep a pleasant, peaceful & safe place to visit.

As an example:

- *Please keep items on graves to a minimum due to the need for work such as regular grass cutting or re-opening of an adjacent grave. Any items that pose risk in terms of Health and Safety (glass or china items), in a state of disrepair or could cause serious offence to other families will be removed.*
- *Floral tributes (flowers/wreaths) will be allowed to remain on a grave until withered or up to a period of 28 days/one month following a burial/Christmas/Easter/Mothers day etc. and will then be removed*

Eastington Parish Council | 01453 799616

community



IT SCHOOLS AFRICA

Transforming lives through access to e-Learning



Unwanted computer?

Old cables and other IT equipment taking up space in your home?

16th APRIL 2016 BRING THEM TO:

TESCO, CHELTENHAM 9:30 – 14:00

TESCO, STROUD 11.00 – 12.00

TESCO, QUEDGELEY 13.30-14.30

AND HELP AFRICAN SCHOOLCHILDREN GET ACCESS TO E-LEARNING.



Secure



Ethical



Free

www.itschoolsafrica.org • 01242 228800 • Registered charity No.1146157
IT Schools Africa, Unit 8, Mead Road Industrial Estate, Leckhampton, Cheltenham GL53 7EF

Wanted to Rent

Parishioner looking for secure storage
(preferably covered),
for small car trailer
L 240 cm x W 90 cm x H 86 cm
(Approx 8 ft x 3 ft x 3 ft)

Occasional access required

Mobile: 07976 661134

Buckholt Tea Garden

Cream Teas and refreshments

Relax and enjoy Aga baked home-made cakes and scones in our secluded classical English garden

Open 2 – 5.30 pm Sunday afternoons

May – August Weather permitting

200m beyond the southern end of The Green.

07788677595



Frampton on Severn

groups

Update on Planning Issues

The Bigger Picture

A recent investigative exercise, across the whole country, examined about 500 planning applications that went to appeal. It suggested that Inspectors are approving the majority of these appeals, based on 'sustainability'. This in turn suggests that government pressure to build houses is intense.

There is without doubt a housing problem: The Government has determined that we need to build 250,000 houses each year, 68% (170,000 houses) of this requirement is to accommodate the direct and indirect effect of net migration. Last year there were 143,560 housing starts.

Simple arithmetic explains the very real need for a substantial increase in house building to the levels determined by government. To put this in context, Birmingham has a housing stock of 425,000, so we need to build the equivalent of a Birmingham every 1.7 years for the next twenty years to manage our population increase. A sobering thought.

Ecotricity Plans for our Parish

I see that Eastington Parish Council (EPC) commissioned a consultancy assessment of the *transport* part of this planning application. The EPC report highlights some very worrying approaches taken by Ecotricity to promote their application. I strongly recommend that residents read this report available on the EPC web site.

It is also of interest that the transport consultancy used by Ecotricity is the same consultancy used by Hitchens to support the West of Stonehouse (WoS) application. The application is not supported by Stroud District Council's Local Plan, which was so recently approved by full Council.

Don't Strangle Stroud

With all our District Councillors up for election it would be good to know where they stand on this application. Of course many in the Parish are opposed to this plan but as the EPC transport assessment demonstrates, the threat to the main arterial road to Stroud, Stonehouse and beyond is far greater than Ecotricity suggest.

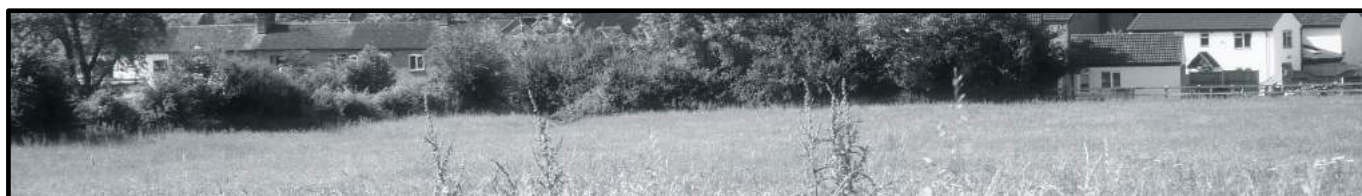
Stroud struggles as a retail and employment centre; further traffic congestion on the A419 in addition to WoS could result in an irreversible decline of both retail and employment.

I am personally very disappointed that Stonehouse Town Council has chosen to support this planning application given that there is no benefit to the Town, only harm in terms of access.

It remains of the utmost importance that residents submit their views to SDC on this application. The EPC transport assessment and the Campaign for Rural England (CPRE) objection provide useful information to guide your response. Both of these documents are available on the website new-town.info

EPC deserve considerable recognition for commissioning the Transport Report and also a Planning Consultancy Report that I believe will be on the EPC Website shortly.

Daniel James | Don't Strangle Stroud (DSS)





groups

Another busy term has been planned

World Book Week

We celebrated World book day in March and all that week the children were invited to dress up as a character from their favourite book - we saw some fabulous characters – Thomas the Tank train drivers, a Ninja Turtle, Spiderman, a firemen, princesses and even a Gruffalo and his child came along to play. Our aim was to encourage children to enjoy listening and sharing stories both at Playgroup and at home to support their next steps of reading.



Topics for the half term

As many children welcomed new babies into their families we decided to have a focus on growing and babies. Children brought in baby photos and we looked at how we had changed and tried to guess who they were.



We are planning to grow some seeds for our allotment and whilst learning about growth and change in plants we will be linking this with stories, such as The Dandelion Seed and Jack and the Beanstalk.

We have set up a Garden Centre on the decking and have started to visit our allotment again to prepare for the new season, the children are very excited about this and have been enthusiastic to help dig and transport soil, weeds and tools in their wheelbarrows whilst learning new skills outside in the fresh air. We would like to say a big **'thank you'** to Dave Gardner who kindly used his rotovator on our raised beds to give us a helping hand.

We have celebrated Mother's day and everyone has made their Mummy a lovely card and a beautiful keepsake fingerprint keyring.

We are also planning an Easter Egg hunt and our resident 'Paddy Bear' is looking forward to a special treat in going home with one of our families to share his experiences with us after the Easter holidays. He already has his case packed!



We will be holding an open afternoon on Wednesday 20th April at 1pm, if you would like to find out more about our playgroup this is a great opportunity to come and meet us - we are taking names for our waiting list for September 2016. We would love to meet you. Give us a ring on 07977 342 742.

Our playgroup offers care and education for all children from 2 ½ years to 4 years 11 months in a well-established community based group.

We offer your children a safe and stimulating environment in which they can grow and blossom into self confident, self reliant and positive little people.

Our ultimate goal is to enable the children to have fun, explore and have the freedom to express their individuality, while forming the basis of their education.

We currently have a few spaces left and operate 4 days a week offering full and half-day sessions and we accept government nursery vouchers and other types of employer supported childcare vouchers.

If you would like more details please contact Mandy Owen, Playleader on 07977 342 742 | email eastingtonplaygroup@eygloucestershire.co.uk | or visit our website www.eastingtonplaygroup.wordpress.com

churches

St Michael and all Angels' Church



News from Eastington Church

It is hard to believe that it is almost a year since our Rector retired but despite this we have been able to maintain our normal pattern of services and are encouraged by the level of support we have had from visiting Priests and members of our own congregation.

As to the future, there have been informal consultations taking place across the deanery. It is being proposed that a new benefice is created incorporating the six churches in our Benefice; which includes Eastington, Frocester, Haresfield, Moreton Valence, Standish and Whitminster, together with the Severnside Parishes, which incorporates Arlingham, Frampton-on-Severn, Fretherne, Framilode and Saul, together with the parishes of Kings Stanley, Leonard Stanley, Selsley and Stonehouse.

Inevitably the way the church is administered will be different from what we have been used to but at least when new appointments are made we will have regular Ministry to provide our Parish with leadership and pastoral care as well as conducting worship, weddings and funerals.

Eastington and Benefice Church Services in April and May 2016

Date	Time	Church	Service	Minister
Sunday 3rd April Easter 2	10.45am	Eastington	Holy Communion	P Newing
Sunday 10th April Easter 3	10.45am	Eastington	Holy Communion	P Newing
Sunday 17th April Easter 4	10am	Frocester	Benefice Holy Communion	M Bennett
	6pm	Eastington	Evensong	C Amys
Sunday 24th April Easter 5	10.45am	Eastington	Holy Communion	P Freeth
Sunday 1st May Easter 6	10.45am	Eastington	Holy Communion	P Newing
Sunday 8th May Easter 7	10.45am	Eastington	Holy Communion with Baptism	P Newing
Sunday 15th May Pentecost Sunday	10am	Standish	Benefice Holy Communion	M Bennett
	6pm	Eastington	Evensong	
Sunday 22nd May Trinity Sunday	10.45am	Eastington	Holy Communion	P Freeth
Sunday 29th May Trinity 1	10am	Whitminster	Benefice Holy Communion	R Atkins

Easter Sunday

Eastington Church will be celebrating Easter on Sunday 27th March with an Easter Communion Service at 10.45am with the Revd Pat Freeth and the Eastington Church Choir.

Following the service, the church will be holding a FREE Easter Egg Hunt in the churchyard. Everyone is welcome to come along!

churches

Eastington Car Boot Sale on Easter Monday

The village is holding a Car Boot Sale at Eastington Community Centre on Easter Monday from 8am. There will be a stall in aid of Eastington Church fund. If you have any suitable stuff to sell, please let Robin Harris or one of the churchwardens have it by Saturday 26th March.

Eastington Church Choir

The Church Choir is looking for anyone who would like to sing and be part of the choir for a number of upcoming special services at Eastington Church:

- Holy Communion (Sunday 3rd April at 10.45am);
- Evensong (Sunday 17th April at 6pm);
- Holy Communion (Sunday 1st May at 10.45am)
- Holy Communion with Baptism (Sunday 8th May at 10.45am);
- Pentecost Evensong (Sunday 15th May at 6pm); and
- Holy Communion (Sunday 22nd May at 10.45am).



The choir would be delighted to hear from anyone who would like to sing. Please contact Shirley at shirleyjb2015@gmail.com or Chris at chris.amys@hotmail.com or on 01453 821656.

Eastington AVM and APCM

We will hold our Annual Vestry and Parochial Church Meetings (AVM and APCM) on Wednesday 13th April 2016 in Eastington Church at 7pm. All parishioners are encouraged to attend. In anticipation of the meeting, please view the PCC's Annual Report and Financial Statements for the year ending 31st December 2015, which are available at the back of the church. All members of the Electoral Roll will automatically get a copy.

At the AVM and APCM, the church will elect 2 churchwardens, 1 Deanery Synod Representative and 9 PCC members (including a PCC Secretary and Treasurer). Everyone who is on the Electoral Roll is entitled to stand and vote at the meetings.

Eastington Church Electoral Roll Renewal

All Church of England parishes are required to maintain an electoral roll. Those people whose names are on the roll are entitled to attend the Annual Parish Meeting and to vote. They are also eligible for election on to the Parochial Church Council. The number of people on the electoral roll also determines how many representatives can be sent to the Deanery Synod where decisions may be taken that affect the churches within the deanery. It is therefore important that all those eligible should be entered on to electoral roll for this parish of St Michael and All Angels.

To be eligible applicants must be:

- a) 16 years of age or over.
- b) Live within the parish boundary or
- c) Have been a regular worshipper at Eastington Church for at least 6 months.

The electoral roll will be revised from Sunday 6th March until Sunday 27th March. New members are asked to apply for entry to the roll. Application forms are available at the back of the church or from Chris Amys, who can be contacted on 01453 821656 or at chris.amys@hotmail.com.

community



Facebook and Website

Thanks to the efforts of Julian Plested and Mary Gribble, we now have an active Facebook page, which you can also reach through our website (which Jan Low has just re-vamped):

www.ecogroup.me.uk

Julian, Mary and Jan are 'Admin' on Facebook, which means one of them monitors all items being posted. The site is public, so anyone can view it but to post to it you have to become a member of the group. Again, an Admin will have to approve your membership but it's really easy (I managed it!).

We welcome anyone posting news and orchard photos (it will be busy on Apple Days most likely). Jan will capture a selection of photos to update the website, which remains the principal archive.

Notice of events and work parties will continue to go out as e-mails as well as now going on Facebook.

Coneygree Work Parties

There have been four work parties already, plus a well-attended indoor winter meeting. The first two achieved 100% winter maintenance on the fruit trees, digging out their mulching circles and pruning.

Kevin's next aim was to re-house half the blackcurrants, up-grading the large fruit cage in the process. The photo opposite shows the technical bits we have learned as a group over the last 5 years:



- (a) the blackcurrant bushes are safely in the ground and pruned back to a dozen strong branches
- (b) Steve is cutting membrane to keep the bushes weed-free
- (c) Cotswold pebbles are added to hold down the membrane and minimise future maintenance.

You can see the completed process on the left edge of the picture. The roof of the fruit cage is rolled up at present, in case there is a late snow fall.

environment

Four things to look out for

Firstly, we will be making paved areas for the oak bench, designed by Gary Dingle and sponsored by the Rotary (John Morris is Rotary President) pictured on the right.

This will be followed by large display boards, designed by Bart Sable with maps and descriptions by Tara Downs. Steve Gribble is making labels for each tree with a 3-D printer.

Pictured below.



The third item will be completion of the Henge, towards the top of the orchard. That's been designed by Kevin Dalby and resembles a compass. Photos in the next ECN.

Finally, watch out for the blossoms!

At time of writing, the plums and Damsons are just peeping out and will be followed in April by the cherries, then pears and lastly apples.

If you walk through the orchard once a week, you will see a change every time. Once we cut the grass, you can check the names of the trees from Steve's labels of course.

To enjoy the fresh air with ECO, ring Tom on 823425 or Kevin on 827401

find us on Facebook or www.ecogroup.me.uk

Tom Low - ECO



puzzle page

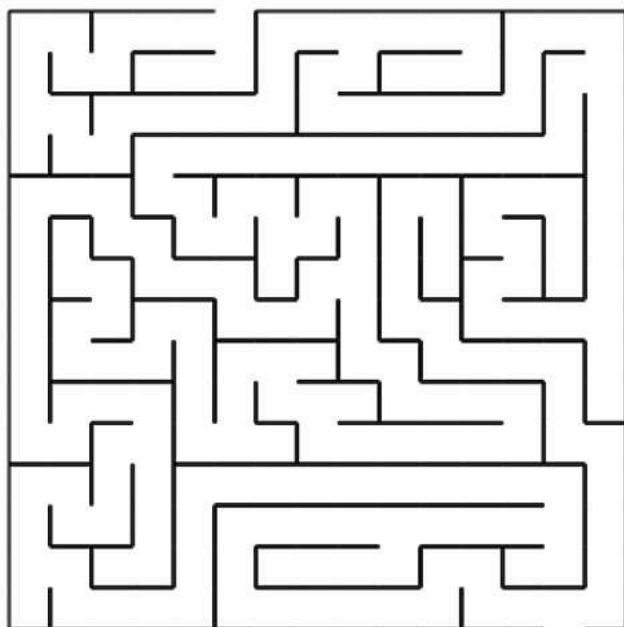
Farm Puzzle Sheet

T	B	C	H	H	P	L	S	H	C
M	R	E	O	O	B	P	I	G	T
B	B	A	R	N	R	A	L	O	R
S	A	E	C	D	S	L	A	M	A
H	A	A	L	T	L	Y	M	A	B
E	G	E	S	O	O	G	B	E	B
E	U	P	R	Y	A	R	D	R	I
P	L	R	O	Y	A	C	B	H	T
R	E	N	H	I	I	H	T	R	I
C	H	I	C	K	E	N	C	S	T

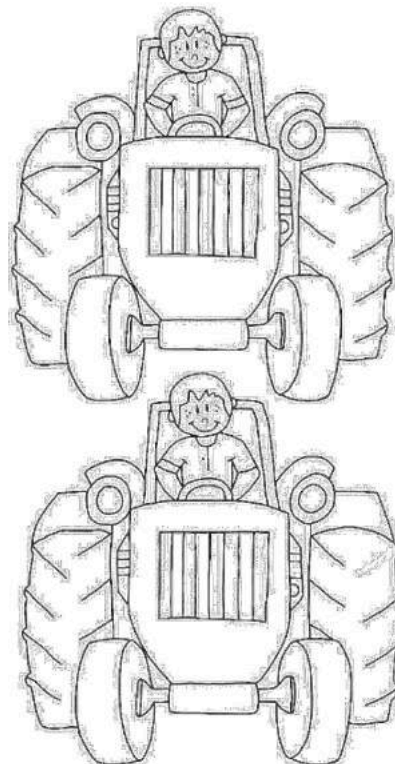
Word Search

BARN	PIG
CHICKEN	RABBIT
GOOSE	SHEEP
HAY	TRACTOR
LAMB	YARD

Maize Maze



Spot 5 Differences


www.kidspuzzlesandgames.co.uk

don't use this page!!

must be 24/28 pages