

## Signpost

### Your news... *your* ECN!

Contributions to ECN are welcome from anyone connected with Eastington Parish, past or present. Send your copy by email to the Articles Editor --- [articles@ecn.me.uk](mailto:articles@ecn.me.uk)

**Next deadline for submission: Friday 15<sup>th</sup> July**

**Next Delivery: Sat/Sun 30/31st July**

*The editor reserves the right to reject or shorten contributions.  
The views expressed in ECN are not necessarily those of the editors.*



### Inside this issue...

#### EDITORIAL

2 From our editor, Andrew Niblett

#### COUNCILS

16 Letter from your District Councillor  
16 Defibrillators for Eastington  
22 Annual Report from the Parish Council

#### CHURCHES

12 Eastington Church - St Michaels  
14 Eastington Methodist Church

#### COMMUNITY

9 Eastington School Pond Dipping  
11 Village Agent News  
15 Neighbourhood Development Plan  
17 Community Land Trust

#### OUR HISTORY

20 Eastington's lost manor houses

#### GROUPS

4 Friends of Snakey Park  
5 Jolly Joggers  
8 Public Rights of Way Defenders  
10 Eastington Community Orchard  
15 Gloucestershire Outdoor Group  
18 Playgroup  
19 Slimming World  
20 Alkerton Rangers  
21 Frampton on Severn Bowls Club

#### EVENTS

6 Spring Flower Show Winners  
7 Eastington Horse Show

### Diary Dates

**'Walk in my Shoes'**  
Sunday 5th June

**Celebration of Church Music**  
Sunday 12th June, 6pm

**CLT Public Meetings**  
Likely dates: 11/ 16 th July

**PROWD Meeting**  
Mon 6th June, 10am @ Kings Head

**Duck Races**  
Sunday 26th June, 12:15

**Eastington Horse Show**  
Saturday 6th August

**PROWD June walk**  
Sun 19th June, 2pm @ Badger

**Eastington Church BBQ**  
2nd July, 5:30pm

**NDP Referendum**  
11th August

### BREAKING NEWS



**Cotswold Canals Trust**  
Working for Restoration

The Cotswold Canals Trust has informed us they will be continuing with elements of the planned restoration of the Stroudwater Navigation from Stonehouse to Saul; despite a disappointing announcement on May 6 that a bid for £15 million towards the project has been turned down for this year by the Heritage Lottery Fund.

More information on this in our August-September edition of ECN.

## Editorial

Welcome to the early summer edition of ECN. If you have already had enough of people arguing one way or another which way you should vote on 23<sup>rd</sup> June, then you may rest assured that this is a 'Brexit free' edition. We shall be focusing on *local* issues inside, which we hope you will find of interest.

Of the many activities and events in this issue, may I draw your attention to the longest running event in our community, which generously supports so many of our village organisations. The annual Eastington Horse Show is to be held on Saturday 6<sup>th</sup> August, and is open to everyone to attend, whether participating or spectating. So, why not bring the family along as well for an interesting day out? Help is also needed on the day to support the organisers, so please see their advert and consider giving them a call.

I would like to thank Chris Osman for her remarkable work as ECN Articles Editor, which she began in May 2014. As you will have noticed, she has transformed the appearance of the printed pages and formats to bring ECN into the 21st Century. Chris is planning to move on and will be stepping down as Articles Editor after this issue.

The job of ECN Articles Editor has been streamlined recently to make it easier to edit articles as they come in. Arranging articles and pictures to create the pages of ECN is now the role of the Production Editor, and we are delighted to welcome Mary Gribble to the ECN team in this new role.

We are now urgently seeking someone for the role of Articles Editor, and eagerly invite you to consider taking on this important role for this community publication. Do you feel you may have what it takes to do this? Why not give Chris or Andrew a call now to learn more about the role. [See advert below]

**Andrew Niblett**

### ECN Team Vacancy

- Do you value being connected locally?
- Do you like helping others to publicise their news and events?
- Do you like helping people find out what's going on?

### Articles Editor Eastington Community News

Receiving articles from key Village contacts and editing copy in preparation for six editions / year

To find out more about this interesting and rewarding role in our community magazine please contact:

Chris Osman | 822060 | [articles@ecn.me.uk](mailto:articles@ecn.me.uk)  
or Andrew Niblett | 824841 | [niblett.parish@talktalk.net](mailto:niblett.parish@talktalk.net)

**Deadline 15<sup>th</sup> June**

### *Buckholt Tea Garden* *Cream Teas and refreshments*

Relax and enjoy Aga baked home-made cakes and scones in our secluded classical English garden

Open 2 – 5.30 pm Sunday afternoons

May – August Weather permitting

200m beyond the southern end of The Green.

07788677595



*Frampton on Severn*

## Community

### Old Badger wins again

#### CAMRA Cider Pub of the Year 2016, Stroud & District

#### ECN reviews five years of the Old Badger

In August 2011 we brought you a sneak preview of the refurbishment of the “Vic” so we thought it was time to check up on progress. Having another accolade to celebrate was a bonus and entirely deserved for what has become an essential part of Eastington life. How did we exist without it?

#### Highlights for Julie and Ellie

Julie picked out the two awards, starting with West Country Pub of the Year in 2014 and followed by the CAMRA award this year as being particularly satisfying. Here they are with the certificate, beside the most local cider – ECO’s Inn Cider.

For Ellie, the success of the Beer and Cider Festival has been a great journey, better year on year. This year, the support from local folks in particular resulted in a sell-out of all 21 beers and most of the ciders. Well done to all our readers – drank the pub dry!



#### Support for Special Events

Both ladies enjoy the sociability of having a substantially local custom and the customers say so too. Many say they get out so much more now that the Old Badger is there for meeting their friends. This shows up in the regular support of the Tuesday Tastings (Gin night maybe tops?), quiz nights, Burns suppers and lately, live music. This started tentatively but grew by popular demand. A perfect example of a community pub responding to reactions of their regular clientele.

“Lots of ideas but too busy running what we have!” said Julie. “We are raising money for the defibrillators, selling Badger pint glasses and had beer donated by Uley Brewery “

One area they both enjoy is the garden, which has evolved more slowly than other features and has become a major factor in the success in attracting families.

#### Verdict on five years?

ECN reminded Ellie of what she said in 2011 “to establish The Old Badger as a community-centred, traditional pub, selling good beers and home-prepared food”. We say – 10 out of 10 for that!

**If you have a favourite moment from the last five years, why not post it on the Badger’s Facebook page or on Love Eastington or you can e-mail the ECN team - [info@ecn.me.uk](mailto:info@ecn.me.uk)**

**Tom Low**

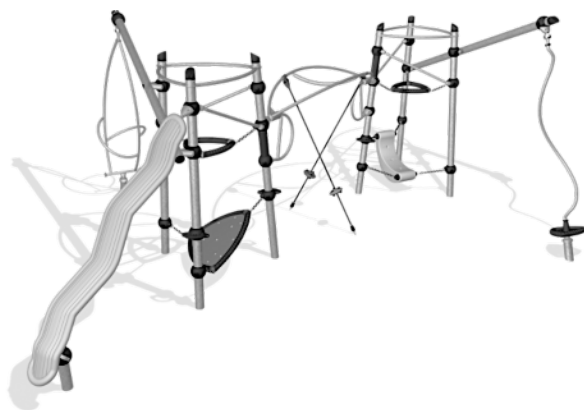
## Groups

### An update from the Friends of Snakey Park



I would like to start by saying how lovely it is to see the park being enjoyed by so many families. When we started the project we spent a lot of time talking about the wider social benefits of open play space. Playgrounds are not just a place for children to play but a place for families to spend time together, for friendships to form and for people feel a part of the community. It's great to see this happening in our little village.

We may have been quiet over the last few months but we have been busy! We have two park developments that we are currently working on. The first is some more play equipment that has been funded by the Community Infrastructure Levy (otherwise known as section 106), this is money given by developers to help improve community facilities when new housing developments are built. We are expecting these funds to be released in the next couple of months and we have agreement to put in some baby swings, a new type of roundabout and a climbing frame similar to the one pictured.



We have also been working on a larger, longer term project to provide some skate ramps. Some of you may remember we carried out an online survey. A big thank you to everyone who took the time to complete it; you provided us with some really interesting ideas as well as proving that there is overwhelming support for both the park and the idea of skate ramps. When we asked you what new equipment you would like to see in the park, skate ramps were the most popular by far and 69% of people who responded said that they or someone in their family would use the ramps.

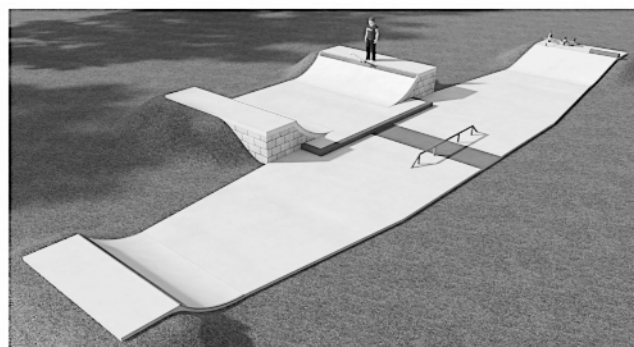


Since this time we have put a paper forward to the Parish Council and they have kindly agreed to add any new ramps to the existing park management arrangements, meaning that they will underwrite the project and cover the costs related to insurance and maintenance, and will offer practical assistance to help us purchase the ramps.

The proposed site is adjacent to the park and is currently occupied by the white storage container. The land belongs to the OMHG site and they have agreed to us putting the ramps there.

Projects such as this work so much better when we can trust other communities bodies to be helpful, so I'd like to take this opportunity to thank both the parish council and the management committee at OMHG for their support.

We hope to be able to provide an area that can be used by a broad range of sports including skateboarding, scooting, roller-skating, inline skating and even BMX biking. These sports listed above have several benefits in common; all require a level of perseverance and practice to become competent, all aid physical fitness and carry



Example Design 1

*Blaise*

## Groups

an important social element. Young people are able to meet, form friendships and learn from one another. This is partially important for young men who benefit from friendships based around activities. Young people who have been able to engage in sports like skating are more likely to be socially engaged, physically fit and less likely to suffer from the lethargy and boredom that can lead to antisocial behaviour.

Our next steps will include getting a focus group together to help plan the design, putting the project out to tender and raising the approximately £60k needed to provide some decent ramps.

If you have any queries or would like to get involved in the project or attend the focus group please get in touch, we'd love to hear from you.

**Jen Empson, Kevin Dalby and Mark Cousins**  
[snakeypark@hotmail.com](mailto:snakeypark@hotmail.com) or find us on Facebook

\*\*\*\*\*

### Come and join the Jolly Joggers!

Get fit, get toned and feel positive about yourself. Every Wednesday 7.30pm prompt @Co-op Eastington. Let's do it! Make a change in your life and join us now.

Absolutely FREE!

We are a group of people (all shapes and sizes) with different fitness targets who meet at least once a week during term time to exercise in the great outdoors. We welcome anyone out there who wishes to get started with running and doesn't know how, or anyone who is currently running and needs some encouragement and some company!

Recently we've been delighted to receive many new starters so you won't be the only beginner! The evenings are beautiful now and the routes will take us to many pretty and interesting places.

We usually have three running speeds...pick a group that suits you. If you are a new starter I will stay with you the whole time to show you the technique or until you feel happy. There will be others put with you to match your speed. No one is left alone. We have a very strong and caring ethos in Jollies and everyone looks after each other. We usually walk/jog 7k or less. We have our stunning rapacious racers who fly off into the distance running approximately 12k or more. Our middle group usually jog/run 10k.

Don't be put off by terms like 'jogging' or 'running', we all started by brisk walking or walking then jogging short distances. You will be amazed at how quickly you get stronger and faster, it really is incredibly exciting! So, get your trainers on and get yourself down to the Co-op on Wednesday! We look forward to meeting you!

Please don't hesitate to call me for a chat 07806 802540 or join our Facebook page JollyJoggers.

Your fitness journey starts here!



**Vanessa Cousins**



## Events

### Eastington Spring Flower Show - Prizes

The Eastington Spring Show Committee would like to thank all exhibitors old and especially the new people who entered. Best in show, Mrs J Bradford, was herself a first-time exhibitor here.

#### Best in show Mrs J Bradford

The total number of exhibitors totalled 18. You may think that's a small number but it's a significant improvement on last year's show which only received 7 exhibits. Please help this show to carry on by planning your garden or allotment ready for the Autumn Show.

The Autumn Show date is the first Saturday in September (3<sup>rd</sup>) to include Veg, Flowers, Cookery, Jam, Alcohol and more. News will appear on the Love Eastington Facebook page and on the ECN website [www.ecn.me.uk](http://www.ecn.me.uk)



The prizes for the Spring Show were as follows –

Most points in section 6, section 3, classes 25-30,  
Most points in children's section 4  
Lady with most points  
Best exhibit class 12-Daffodils  
Most points in show

Mrs Q Jones  
Gracie Cropton.  
Mrs Q Jones  
Mrs C Harris  
Mrs Q Jones



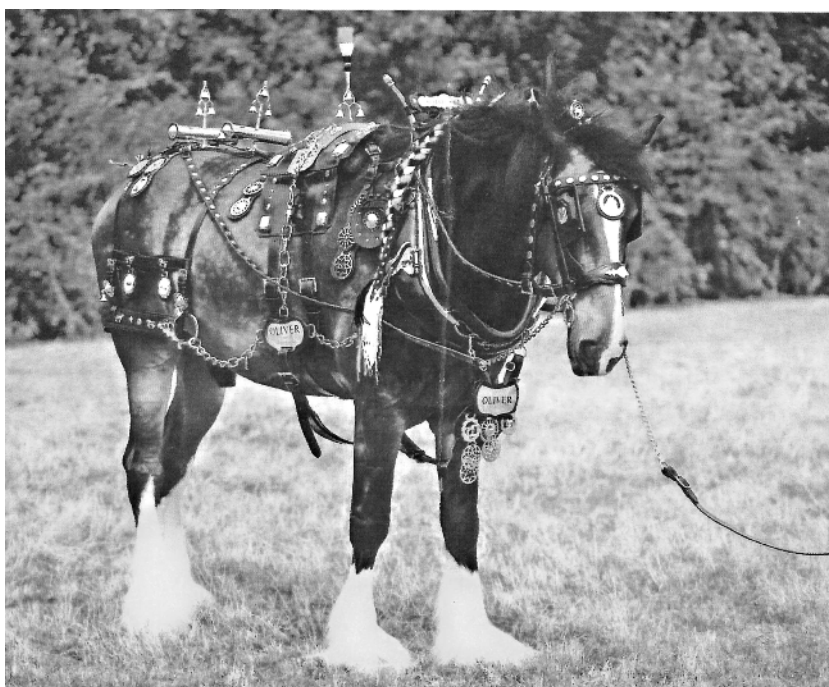
## Events

# EASTINGTON HORSE SHOW

**Saturday 6th August**

Usual venue on A419 between the Shell roundabout and J13. Nearest Post Code is GL10 3SQ

By kind permission of Mr. Dale Vince and Mr. Barrie Yeates  
Proceeds to village organisations and other charities  
(a gate collection is made from non-competitors)



Showing classes – Shetland to Shires – and Jumping classes.

Start at 9.00am and continue throughout the day.

Fancy dress and gymkhana from 1pm

Show secretary Mrs. Jane Hyatt, 01453 828781 / 07776 044 930

Find the show programme at [www.eastingtonhorshow.co.uk](http://www.eastingtonhorshow.co.uk)

### **A Great Day out for all the family!**

Please support Eastington's longest-running event. Even if you don't compete, do come along on the day and watch the events.

If you or you know of anybody who would be willing to be a sponsor, lend a hand on the day of the show or is interested in becoming part of the committee, please let us know by contacting the show secretary Mrs. Jane Hyatt, 01453 828781 / 07776 044 930



## Groups

### Public Rights of Way Defenders (PROWD)

Unfortunately I couldn't do the last walk on 17<sup>th</sup> April as I was still suffering from an acute attack of gout that affected the whole of my right foot. The walking group did however meet at the Badger and Vanessa led them on a long walk that took them through the meadows near the School and on to the viaduct. From there, they went up to Five Ace Grove (bluebell wood) and then across the railway line.



Once safely across, they went across fields to the Frocester George where they stopped for a break and some refreshments. Afterwards, there was a short walk down Bath Road and southwest across more fields towards Lower Downton, before turning north to finish at The Kings Head. Another long walk on a hot day - about 4 hours in total. Well done everyone.

A big thank you to our Parish Council for paying to up-grade footpath EEA56. This path runs from the Badger southwest towards Cress Green, and had become damaged and muddy. Now it has been cleared and new stone chippings have been laid. It looks lovely and I have had many favourable comments. I hope that we can now

keep the path tidy, and I ask (some) dog owners not to allow their dogs to foul this path. Signs have been erected to remind dog owners of the costly penalties.

I have had a number of people contact me about the muddy conditions in the gateways on the paths that run through the meadows (EEA43 and EEA44). I have contacted the landowner, and he said that he would put some stone in the gateways to alleviate the situation as soon as the weather is dry enough.

I am busy renewing, and upgrading the Waymarking on our Parish footpaths, and I've had help from Sally and Vanessa. This an on-going job, and if you know of anywhere, where the signage is not very good,..... please let me know

I have been invited to meet with Coaley Parish Council to talk about footpaths in their Parish. They have some lovely walks, and I'm hoping to work with their walkers to improve some of the Waymarking.

I have contacted the Woodland Trust about the misuse (by cyclists and horse riders) of part of the Cotswold Way that runs through Stanley Wood. This is being investigated.

Good news on footpath EEA13, near Stroudwater Industrial Park. We now have a brand new bridge, and more waymarks. Many thanks go to Sarah our County Footpaths Officer.



**Next PROWD meeting: Monday 6th June 1000 at The Kings Head Hotel**

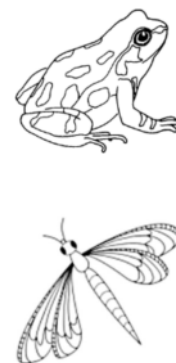
**June Walk: Sunday 19<sup>th</sup> JUNE 14.00 at the Badger**

**Bill Edwards | PROWD**



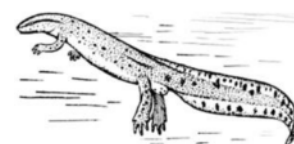
## Community

### Eastington Primary School



### Pond Dipping

On Monday 9<sup>th</sup> of May 2016 class two went pond dipping in Mr Dougan's garden pond.



At the pond we saw all sorts of creatures. Imi bravely caught a female pregnant newt which was surprisingly small. The male newt had spots and a flat tail, but the female newt has a more rounder tail and no spots.

Next we found that tadpoles are black and they wiggle to swim. The biggest amount of tadpoles that one pond dip had was 33, how exciting! Did you know that when tadpoles grow up they turn into frogs? Hero actually caught a frog. It's dark skin was shiny and it jumped really high.

One of our friends gently caught a dragonfly larva (or nymph). We learned that dragonfly nymphs stay in the water for a long time and then shed their skin like a snake to become dragonflies.

"It was a pleasure to dip in Mr Dougan's pond, and I even caught a water dragon!" said Ted.

Lottie caught a leaf with lots of snail eggs on it. They were transparent and gooey. They looked slimy!

We learned lots of new things and enjoyed our trip very much,. Thank you for spending time with us Mr Dougan, it was an afternoon to remember!

**Class 2 – Eastington Primary School.**



## Groups



### Busy, Busy, Busy....

Our cider workers have been successful, carpenters fulfilled and sponsors delighted. All this and a new community orchard just on the horizon!

### Coneygree Work Parties

Another 3 working parties and we have a very presentable public orchard. As previewed in the last ECN, we now have a bench for people to appreciate the tranquillity of our orchard. The bench had it's official opening on 14<sup>th</sup> May by Gill Rodgers, past Chair of Stonehouse Rotary. We had to test it after installation, of course – it's very heavy stuff, oak.



We have also made walking areas to allow visitors to stand by the display boards (in stylish ECO diamond format, above). The first of these is in place at the top of the orchard, thanks to carpentry by Bart and Tom. You may hardly notice that the grass is under control, the fruit cage roof is in place for the summer and the spring flowerbeds are just waiting to pop. That's what ECO volunteers do, having healthy exercise in the fresh air, for free. Think about it next time you pay your gym fees? **Ring Kevin on 827401 or Tom on 823425**

### Inn Cider makes a hit at the Badger

In our second season of making cider, we tried out our (very dry) brew at the Badger's Cider and Beer Festival. After the festival it was on sale on the main pumps – what an accolade! (Photo on page 3)

You can buy your own supply by contacting Tom on 823425, either in bottles or 10 or 20 litre Party Packs (that's 17 or 34 pints in old money). We will also be selling draught cider at the Duck Races again, worked well last year.

By the way, if you like Strongbow, you won't like Inn Cider – it's a classic Gloucester dry, strong, still brew.

### Brownings Community Orchard – very soon

Watch out in the next ECN for coverage of the new community orchard behind the Kings Head. This used to be the orchard that supplied the Kings Head with cider and perry, in the days when you couldn't drink the local water. We are leasing it from Cottsway Housing, whose seven houses stand behind the Kings Head. There is a very considerable amount of bramble clearance and hedge pruning to be done but we will be advertising work parties very soon. Sitting just 100 yards from Alkerton Cross, there is plenty of opportunity for folks in the middle of the village to get stuck right in!

**Find us on Facebook or [www.ecogroup.me.uk](http://www.ecogroup.me.uk)**

**Tom Low | ECO Group | 823425**

## Community

### June News from your Village Agent

There's lots going on around the county this month, and one big event on June 5<sup>th</sup> marks "Walk in my Shoes" to celebrate **Carers Week from 6<sup>th</sup> to 12<sup>th</sup> June**.

Join Carers Gloucestershire for a day supporting Gloucestershire's unpaid carers, who last year saved the local economy an incredible **£540 million!**

It takes place in **Pittville Park, Cheltenham** on **Sunday 5th June 2016**. The event will see people from across the county swapping footwear with their family, friends and colleagues to walk a mile around the beautiful Pittville Park to show their support for local unpaid carers. **Registration is £10 for adults and £5 for children**, which includes your 'Walk a mile in my Shoes' t-shirt and goody bag (under 16s can register for free if they don't want a T-shirt).

If you are one of the 63,000 unpaid carers in Gloucestershire, please contact Carers Gloucestershire if you haven't already registered with them. In addition to providing information, advice, support in the form of groups, days out, counselling and a bespoke support line, Carers Gloucestershire also provide the **"Positive Caring programmes"**.

These are free local sessions giving carers the opportunity to meet other carers in similar circumstances to gain and share knowledge and information. Open to all adult carers, whether you are the main carer or not, or whether you live with the person supported, or not. The sessions are run across the county both in the day and evening and are 2 ½ hours long.

The programme covers health and well-being, emotions and stress, practicalities of caring, finance and resources, how to access services and support, how we juggle caring with other demands.

As a carer, there can be additional worry about what would happen if you were to become ill yourself. That's why there is "The Emergency Carers Scheme" which works on two levels of need. You can find out more by having a carer's assessment which will also check you have the right benefits, getting respite care, and you can discuss issues that might cause concern such as arranging power of attorney in the future.

Most of our local charities which focus on physical and mental health conditions will also offer more specific information to support you as a carer. If you need help to find their details, please contact your local Village or Community Agent, or contact Healthwatch Gloucestershire, and they will be delighted to see how they can help you.

**Carers Gloucestershire** Telephone: 01452 386283

**Gloucestershire Young Carers**-Gloucestershire Young Carers is a support network for young carers across the county. They work with young carers to ensure that service providers understand their needs and respond appropriately. **Telephone:** 01452 733060

Healthwatch Gloucestershire - free phone 0800 652 5193

**Carers UK** - Carers UK is a charity set up to help millions of people who care for family or friends. **Telephone:** 0808 8087777

**The Carers Trust** -A charity for, with and about carers which works to improve support services and recognition for anyone living with the challenges of caring, unpaid, for a family member or friend who is ill, frail, disabled or who has mental health or addiction problems. **Telephone:** 0844 800 4361



## Churches

### Eastington and Benefice Church Services in June

| Date   | Time            | Church                 | Service   | Minister        |
|--|-----------------|------------------------|---|-----------------|
| <b>Sunday 5th June</b><br><b>Trinity 2</b>   | 10:45 am        | Eastington             | Holy Communion  | P Newing        |
| <b>Sunday 12th June</b><br><b>Trinity 3</b>  | 10:45 am        | Eastington             | Holy Communion  | P Newing        |
|  | <b>6 pm</b>     | <b>Eastington</b>      | <b>RSCM Music &amp; Queen's 90th Birthday Service</b> | <b>Lay-led</b>  |
| <b>Sunday 19th June</b><br><b>Trinity 4</b>  | <b>10:00 am</b> | <b>Whitminster</b>     | <b>Benefice Holy Communion</b>                        | <b>P Newing</b> |
|  | 6 pm            | Eastington             | Evensong  | Lay-led         |
| <b>Sunday 26th June</b><br><b>Trinity 5</b>  | 10:45 am        | Eastington             | Holy Communion  | P Freeth        |
| <b>Sunday 3rd July</b><br><b>Trinity 6</b>   | 10:45 am        | Eastington             | Holy Communion  | P Newing        |
| <b>Sunday 10th July</b><br><b>Trinity 7</b>  | 10:45 am        | Eastington             | Holy Communion with Baptism                           | P Newing        |
| <b>Sunday 17th July</b><br><b>Trinity 8</b>  | <b>10:00:00</b> | <b>Moreton Valence</b> | <b>Benefice Holy Communion</b>                        | <b>P Newing</b> |
|  | 18:00:00        | Eastington             | Evensong  | Lay-led         |
| <b>Sunday 24th July</b><br><b>Trinity 9</b>  | 10:45 am        | Eastington             | Holy Communion  | P Freeth        |
| <b>Sunday 31st July</b><br><b>Trinity 10</b> | <b>10:00:00</b> | <b>Haresfield</b>      | <b>Benefice Holy Communion</b>                        | <b>P Newing</b> |

#### Eastington Annual Vestry and Parochial Church Council Meeting

Eastington Church held its annual meetings in the Charlie Bullock Room on Wednesday 13<sup>th</sup> April.

At the meeting, 3 nominations for Churchwarden were received for Mike Naylor, Jill Simmons and Muriel Bullock. An election was held, with Mike receiving 13 votes, Jill 4 votes and Muriel 7 votes. Therefore Mike and Muriel were elected as Churchwardens for 2016-2017.

8 nominations were received for the PCC for Chris Amys, Jacky Naylor, Barbara Hall, Jill Simmons, Jane Williams, Robin Harris, Celia Harris and Beryl Frith. Two vacancies remain open on the PCC. If you are interested in becoming a member of the PCC, please contact Chris Amys.

At the PCC meeting following the annual meetings, it was agreed to appoint Jill Simmons as Honorary Churchwarden. Thanks were given to Jill for all her years of service. Chris Amys was re-elected as Secretary.

Ian Hodges was co-opted as a PCC member and agreed to remain as Treasurer until a replacement can be found. Eastington Church is looking for a new PCC Treasurer. If you are interested or know anyone else who might be you can find out more information about becoming the new Treasurer from either Chris Amys or one of the churchwardens.



## Churches

No nominations were received for the post of Deanery Synod Representative at the meeting, but Jane Williams volunteered after the meeting, and has since been elected our Deanery Synod Representative.

### **Eastington Worship Group**

The Worship Group was formed in 2015 to plan forthcoming services and make changes to our lay-led services. In 2015 we held some very successful services which included the service at the end of Christmas Tree Festival as well as our Carol and Christingle Services.

The Group are holding a meeting on Monday 20<sup>th</sup> June at 6.45pm to discuss upcoming forthcoming services. If you would like to be part of any forthcoming services, or have an idea about how we can improve our services, please contact Muriel Bullock on 01453 826172 or at [murielbullock@gmail.com](mailto:murielbullock@gmail.com).

### **Formal consultation on the future of our Parish and Benefice**

Representatives from Eastington Church and others from across the Benefice have received a draft proposal and supporting papers following an informal consultation of the West of Stroud Review. In summary, the draft proposals provide for:

- the union of the parishes of Arlingham, Eastington, Framilode, Frampton-on-Severn, Fretherne, Frocester, Haresfield, Kings Stanley, Leonard Stanley, Moreton Valence, Saul, Selsley, Standish, Stonehouse and Whitminster;
- the establishment of a team ministry for this new benefice to be shared by a team rector and two team vicars;
- the appointment of the Reverend Charles Minchin as one of the team vicars; and
- the housing arrangements for the team, namely the Rector to be based at The Rectory in Leonard Stanley, and the two vicars based at St Mary's House in Frampton-on-Severn, and The Vicarage in Stonehouse.

Copies of the proposals are on the church notice board, available at the back of church, and can be sent by hard-copy and electronically on request to the Churchwardens or the PCC Secretary.

### **Eastington Church Library**

The small library in our Parish Church continues to thrive and is well used. A comfortable well lit area has been provided for those who wish to sit and browse. We have extended the facility to include audio books and jigsaw puzzles.

If you have any contemporary novels or recent paper backs, audio books or jigsaw puzzles in good condition these are in great demand and any donations will be most welcome.

We do have some regular borrowers and buyers who find this small library a real community asset and we always need to restock. We need your support to help assure the future of the library.

### **Virtual Tour of Eastington Church**

Andy MWillis and his wife got married in Eastington Church on 11<sup>th</sup> December 2015. Andy is a photographer and is doing a project whereby he is shooting virtual tours of Churches and Cathedrals. He is doing it for his own portfolio, but has given us kind permission to use the tour on our website, and we are extremely grateful for allowing us to do this.

To access the Virtual Tour, please visit our website where you will be able to access the link:

<http://www.cotswoldedgeparishes.org.uk/virtual-tour-of-eastington-church.php>

## Churches



### Eastington Methodist Church

| Eastington Methodist Church Activities  |  |
|---|--|
| Baby & Toddlers Group   | Mondays 10:00 – 11:30am                              |
| Prayer Meetings   | Tuesdays 8:15 – 9:00am & Fridays 8:30am – 9:00am     |
| Line Dancing  | Tuesdays 10:30am - noon                              |
| Lunchtime Bible Study   | Tuesdays 1:00 – 2:30pm                               |
| Evening Bible Study House Group<br>(Christianity Explored Tuesdays 7:30pm-9:30pm)                   | Tuesday 8:00 – 9:45pm at The Pike Lock House         |
| Tiny Tigers Toddler Group   | Wednesday 9:30 – 11:30am at Whitminster Village Hall |
| Youth Club (11-18)  | Fridays 7:00 – 9:00pm                                |
| Main Service (+ youth session)  | Sundays 11am   |
| <i>Unless stated otherwise, these are held at EMC which is opposite the butchers in Eastington.</i> |  |

#### Messy Lost and Found – June 1st

We will be holding a Messy May/June half term holiday event at 10am on Wednesday 1st June at the church. This will provide the usual mix of craft activities, a song, some sort of talk and/or a video followed by a delicious selection of free home made cakes. This is suitable for all ages. If you want to know who or what was lost and found, you need to come along.

#### Youth Club

We have decided to let young people who will be going up to secondary school this summer to join the youth club from now onwards. This will hopefully mean that some of those we have contact with through our activities with the schools at both Eastington and Whitminster will start to come along before we lose contact with them at the end of the school year. We are running sleepovers roughly every two months at present to coincide with the Christianity Explored all age Café Church sessions. The next one is likely to be on the weekend of July 2nd/3rd.

It is also likely that we will be organising some youth days out over the summer holidays as we have for several years now including a trip to Southerndown beach in South Wales. We have not planned the dates yet so please keep an eye on the church web pages or make contact nearer the time.

#### Sunday Youth Bible Study Group

It's not as boring as it sounds and perhaps someone will come up with a hoopy name at some point. The Spring Harvest trip this year triggered a level of interest among a group of our young people, which has resulted in us starting a youth session in parallel with our 11am Sunday morning service. Not only were some of the young people impressed by witnessing the power of prayer at Spring Harvest, they have seen it work when they have prayed now that they are back too. Liz, our Youth & Family Worker, leads the sessions, which are designed to be fun and engaging.



#### Out on the Doors

Now the evenings are light, the Tuesday Evening Bible Study House Group are planning to go out on the streets to meet people on selected Tuesday evenings over the summer to spread



**Ken Burgin – Senior Steward**

**Ken, Beck & Liz Burgin 01453 827414 [www.EastingtonMethodists.org.uk](http://www.EastingtonMethodists.org.uk)**

## Community

# Neighbourhood Development Plan – Nearly there

**SAVE THE DATE – 11 AUGUST 2016**

This is the date that Eastington Neighbourhood Development Plan (NDP) should go to Referendum. The Plan has been through independent examination, and the examiner has made 20 recommended amendments to the Plan. None of those recommendations materially change our plan. Indeed in some cases they strengthen and improve the plan. Those recommendations, with a report from Officers, now go to Stroud District Council's Environment Committee in June and they decide whether to endorse the recommendations in the plan and agree that the Plan should proceed to referendum.

The Ecotricity Planning application and now with the next phase of CLT development it is easy to lose sight of our NDP. I would urge you to stay with us for just a very few more months. The NDP matters and there are good reasons why it is so important for our parish.

We remain as a Parish very vulnerable to planning applications given so much of the land in the Parish is owned by Developers.

- Neighbourhood planning enables communities to play a much stronger role in shaping the areas in which they live and work and in supporting new development proposals. This is because unlike the parish, village or town plans that communities may have prepared, a **Neighbourhood Development Plan** is the plan for our parish and sits alongside the **Local Plan (LP)** prepared by Stroud District Council. Decisions on planning applications will be made using both the **LP** and the **NDP**, and any other "material considerations".
- Neighbourhood planning provides the opportunity for communities to set out a positive vision for how they want their community to develop over the next ten, fifteen, twenty years in ways that meet identified local need and make sense for local people. We have prepared that Plan and put in place planning policies that will help deliver that vision and support planning permission for the development we wish to see.
- To help deliver their vision communities that take a proactive approach by drawing up a neighbourhood plan or Order and secure the consent of local people in a referendum, will benefit from 25 percent of the revenues from the Community Infrastructure Levy (CIL) arising from the development that takes place in their area.
- A small number of residents of our Parish have spent almost 3 years preparing this plan we believe that the plan reinforces good planning at a local level when planning applications come forward.

Should anyone wish to discuss the plan then I or anyone one of my colleagues on the project team would be happy to meet up for a coffee to discuss. Richard.pidgemore@outlook.com

Please support your plan at the **referendum**. We'll publish more details in the next edition of the ECN.

**Daniel James, Chair, NDP Project Team**

### Gloucestershire Outdoor Group

Do you like walking and being out in the countryside exploring new areas?  
Why not join Gloucestershire Outdoor Group (GOG).

The group has a varied programme of walks and other events in Gloucestershire and further afield. We also have weekends away most months which are great fun and good value for money, these can be camping, hostels, bunk houses and we have stayed in some lovely cottages too! The group is really friendly and it is a great way to meet new people and see different places. Members are of all ages. We are affiliated to the YHA. New members are always very welcome.

To find out more see our website. [www.glosoutdoor.co.uk](http://www.glosoutdoor.co.uk)  
or email the group at [glos-outdoor-group@hotmail.co.uk](mailto:glos-outdoor-group@hotmail.co.uk)

## Councils

### Letter from our District Councillor, Stephen Davies

Dear all

We have had a few good days and for a moment it felt like summer had arrived, but as I write this it is dull and overcast. However it did mean that the last few days of the Stroud District Council Election Campaign saw us delivering leaflets in the sunshine.

So we now have the results of the new Severn Ward, which has Eastington as part of a 2 District Councillor Ward with Whitminster, Frampton, Saul and Arlingham.

|                |                  |           |         |
|----------------|------------------|-----------|---------|
| John Jones     | Conservative     | 723 Votes | Elected |
| Stephen Davies | Conservative     | 721 Votes | Elected |
| Tom Lydon      | Labour           | 446 Votes |         |
| Reginald Howe  | Liberal Democrat | 353 Votes |         |
| Robin Lewis    | Green Party      | 291 Votes |         |

I am very honoured to be re-elected to represent Eastington and we look forward to continue the work on ensuring the West of Stonehouse Development is the best we can make it and challenging the Ecotricity Proposal. John Jones was the Councillor for the old Severn Ward and therefore brings significant knowledge and experience. We are committed to serve all the people of Severn Ward regardless of whether they vote for us or not.

The overall result for the District is that the Conservatives remain the largest Party with 23 Seats (down from 24) but without an overall majority. A coalition of Labour with 18 seats (no change) Green Party 8 seats (Up from 6) and Liberal Democrats with 2 seats (down from 3) look to continue to run the District Council. With the election out of the way we can focus on getting the best for our area and seek agreement when we can.

**If you want to contact us you can reach me at [cllr.stephen.davies@stroud.gov.uk](mailto:cllr.stephen.davies@stroud.gov.uk) or 07802 595 307 or John at [cllr.john.jones@stroud.gov.uk](mailto:cllr.john.jones@stroud.gov.uk) or 07808 922 918**

**Stephen**

### Defibrillators for Eastington

Eastington Parish Council would like to purchase 2-3 defibrillators for the Parish. Exact locations are yet to be decided but would reflect the probable/expected usage.

The defibrillators would be publicly accessible and stored in a cabinet on the outside of a building, clearly signposted. The cabinet can be locked with a keypad, and the Ambulance Service would give out the code in times of need. You do not need training to use a defibrillator; the machine talks to you and you will also have the emergency services on the end of the phone (they don't hang up until a medical professional arrives with you).

In some parishes, old phone boxes have been used to house the units. In other parishes, the defibrillator is stored in a cabinet attached to the outside wall of a shop. In all cases, the defibrillator needs access to power to ensure the cabinet doesn't drop below freezing (and damages the battery). The electricity costs approximately £20 per year.

So what happens now? Well, the cost is around £2000 per unit including the cabinet and the Parish Council is hoping to raise funds to purchase up to 3 defibrillators. If you or your family, your company or employer would like to make a donation, please contact the Parish Council on 01453 799616 or email [eastingtonparishcouncil@gmail.com](mailto:eastingtonparishcouncil@gmail.com).

For more information on the use of defibrillators, please go to

<https://www.resus.org.uk/publications/a-guide-to-aeds/> to download a guide.

**Julie Shirley | Parish Clerk | Eastington Parish Council | 01453 799616**



## Community

### **Eastington Community Land Trust (CLT) Building Affordable Homes for Rent, for Eastington People**

#### **What is a CLT?**

**We are a voluntary group, aiming to build Affordable Houses for rent in Eastington.**

Specifically, houses we build will be available firstly to Eastington people, in perpetuity. This includes:

Current residents of the parish :

- Older folks wanting to down-size, near home
- Younger folks living with parents, perhaps with a child

People with family connections living elsewhere (perhaps wishing to return)

People working in the parish wanting to live nearer their work

Only when a vacant house is not required by any of these will it be offered outside the Parish.

#### **How is a CLT run?**

Our CLT will be registered as a Community Benefit Society (non-charitable), comprising a Board of about 9 trustees and a wide membership. We already have 40 members and would like to at least double that (see Public Meeting below)

Members are anyone who lives, works or has family connections in the Parish, who pay £1.00 for lifetime membership.

The Board is elected by all members on an annual basis to run the CLT for the social, economic, and welfare benefit of the Parish.

#### **Why now?**

Lots of reasons – one might say, the sooner the better.

We have measured the need for Affordable Rented housing (after the Parish Plan in 2013) and realised there is an unfulfilled need for 24 houses, mainly smaller units. Commercial sites, like the West of Stonehouse development, will not build houses specifically for Eastington people. Government policy is changing on Affordable Housing, to favour starter homes for sale. That is not what Eastington needs, so we have to act quickly to build our own houses.

There is support for acting now in the Stroud Local Plan and the Eastington Neighbourhood Plan.

#### **What you can do – Public Meetings in July**

Come along and learn more about the CLT and what benefits it can bring to you, your family and the community overall.

Hopefully you will be persuaded to become a CLT member (for £1.00) and go on to vote for the Board membership. If you think you would like to be a Board Member, you can indicate that too.

More details of the Public Meetings and about the CLT will be delivered on leaflets nearer the time.

**Likely dates are Monday evening, 11<sup>th</sup> July and  
Saturday morning, 16<sup>th</sup> July, pop them in your diary.**

Muriel Bullock, Acting Chair [murielbullock@gmail.com](mailto:murielbullock@gmail.com)  
Tom Low, Acting Secretary [tom@hazeltottage.eu](mailto:tom@hazeltottage.eu)

<https://eastingtonclt.wordpress.com>

## Groups

### What have we planned for the summer term?



Our topic for this half term is about expressing ourselves and developing our imaginations through stories and adapting the role-play corner to reflect different themes.



We asked our parents to help support children's learning at home by participating in a sponsored 'texture treasure hunt' many of the children returned after the Easter holidays with a bag of goodies containing natural materials, wood, shells, metal and other objects such as foil, feathers, cork to name a few. They all enjoyed exploring these objects whilst learning new words to describe how they looked and felt.



We had a week of physical activities such as an obstacle course, climbing, balancing, running races and moving our bodies with control and co ordination.

Then we had a fun week designing pants for superheroes, drawing out our design first and then using fabric pens to transfer this onto real pants to wear the following week acting out 'Superheroes' whilst being kind to others and saving our friends in imaginary play.



Preschool sessions have now started at Eastington Primary School to help support our older children in preparation for the transition in September and we have also had our open afternoon which was very well attended.

If you were unable to come along then please feel free to contact us and come along for a visit to find out more, we would love to meet you.

**Our playgroup offers care and education for all children from 2 ½ years to 4 years 11 months in a well established community based group.**

**We offer your children a safe and stimulating environment in which they can grow and blossom into self confident, self reliant and positive little people.**

**Our ultimate goal is to enable the children to have fun, explore and have the freedom to express their individuality, while forming the basis of their education.**

We now have a few spaces available for new children to start in September and operate 4 days a week offering full and half day sessions. We also accept government nursery vouchers and other types of employer supported childcare vouchers.

If you would like more details please contact Mandy Owen, Playleader 07977 342 742  
email [eastingtonplaygroup@eygloucestershire.co.uk](mailto:eastingtonplaygroup@eygloucestershire.co.uk)  
or visit our website [www.eastingtonplaygroup.wordpress.com](http://www.eastingtonplaygroup.wordpress.com)

## Groups

### Eastington and Stonehouse Slimming World Groups

Well, it's been 26 degrees and sunny one day, and the next day we've had rain and mist - British Summer time has arrived! We're getting ready for it and we've been sharing lots of summer eating ideas; from picnics to BBQs, dinner parties to lunch boxes. If those summer holidays are booked and on the horizon then Slimming Worlds Food Optimising Plan really does mean you can eat healthily, satisfy your appetite and lose the weight you want to. Our busy and friendly groups are key to success, and the support everyone offers and receives means successful weight loss.

So would you like to be slimmer, healthier and fitter to keep up with the children and grandchildren or look fabulous in your summer clothes and swimming costumes on the beach, then Slimming World really is the answer.

All groups are collecting our 'slimming out of, and unwanted clothes' to donate to Slimming Worlds Clothes Throw, supporting Cancer research. I will keep you posted with the funds raised for this extremely important charity.

If you would like to lose half a stone or if you have many stones to lose then help is at hand. Come along and find out all about us, there's no obligation to join.

We meet every Wednesday 9.30am at the Stonehouse Community Centre or at Eastington Village Hall at 5pm or 7pm. I look forward to meeting you.

Finally I would like to say congratulations from everyone at group to the lovely Emma on your Wedding day. Emma will be walking down the aisle over 5 stones lighter; we're so proud of you and send you all our congratulations for your wedding day - can't wait to see the photos xx

### Alkerton Rangers Review | 2105-16 Season

It has been a challenging season for Alkerton Rangers. With the en masse departure of last season's First team, the Reserves were forced to step up two divisions to Stroud and District League Division Four. With a strengthening of the squad things looked up, but poor early results against what proved to be the top two sides brought a touch of realism. In the weeks that followed manager Kev Bond focused his troops and two excellent results against high-flying teams – a draw away to Chalford Reserves and a defeat of Cotswold Rangers – gave cause for optimism.

Unfortunately, Rangers lacked consistency and found themselves in the same predicament in a number of matches, where chances were created but not taken, although Ash Gallagher weighed in with a handsome total from midfield. A spate of injuries, some long-term, did not help the cause,

but the spirit of the squad remained high due in part to the large Eastington contingent. An eighth place finish with 18 points was the reward for the great effort from the players, and with the right recruitment, Rangers are looking to progress and aim for honours next season.

Hearty congratulations must go to Paul Wilkinson who completed his 30th season at the club, an incredible feat that will surely not be rivaled. The team will begin pre-season training at the Owen Harris Memorial Ground at Snakey Lane in Eastington in the first week of July.

**Any players interested in joining Alkerton Rangers should contact the Chairman of the football club Martin Elliott on 07557 360901.**

## Our History

### Eastington's lost manor house

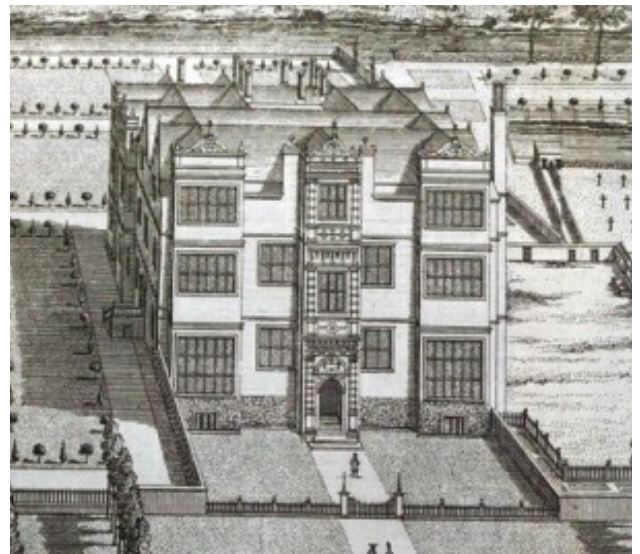
In the previous issue of the ECN, we heard about the possible traces of an early manor house (at Alkerton) that once stood where Alkerton House was later built. This in turn was swept away by the development of Swallowcroft. But this is about a different manor house, also long gone. This was the manor house that was built in Churchend, next to where the church now stands.

Like Alkerton manor, this also replaced an earlier structure. Again, as with Alkerton, this was also surrounded by a moat. Some historians suggest that this site at Churchend could have been the earliest part of the village to be settled permanently - this may have been by the 11<sup>th</sup> century or even earlier. Of course, we have no details of this although by the 1300s, a manor house was mentioned as standing adjacent to the west end of the church. In 1409, it was recorded as being surrounded by a moat with a wall inside. Entrance was gained via a drawbridge "and great gate with a chamber above". Other parts of the house comprised a chapel on the north side, a great chamber on the west, and a kitchen.

However, this earlier house was eventually replaced by a new one, the subject of this article. This was a large structure built around 1578 by Edward Stephens, Lord of the Manor. The new manor house was of three storeys and built of dressed local stone.

As can be seen from the engraving, it was lit by numerous large rectangular windows, an expensive luxury for the time.

It also had a front porch that extended the full height of the building. This accommodated the front doorway that was flanked "with rusticated pilasters and entablature and windows on the two upper floors flanked by similar pilasters". A century later, it was noted that to keep the place warm, it had no less than 19 fireplaces! Perhaps surprisingly, in the early 1700s, part of the moat still survived on the west side of the house. It's quite possible that this was being used as a fish pond, breeding fish for the Lord of the Manor's table. There was also a dovecote close by, used to provide birds and eggs to the household.



Eventually, in the early 18<sup>th</sup> century, the Stephens family deserted Eastington, moving to Chavenage House near Horsley. The Eastington manor house appears to have then been let to tenant farmers and for many years, it was recorded as a farm house.

This period doesn't seem to have been too kind to the old place, as it was said to have gradually decayed and gone to ruin. In 1778, the end came and it was finally demolished. Since then, the final traces of the moat have disappeared, as have the gardens, dovecote and various out buildings. However, the detached stone built range to the right survives as cottages.

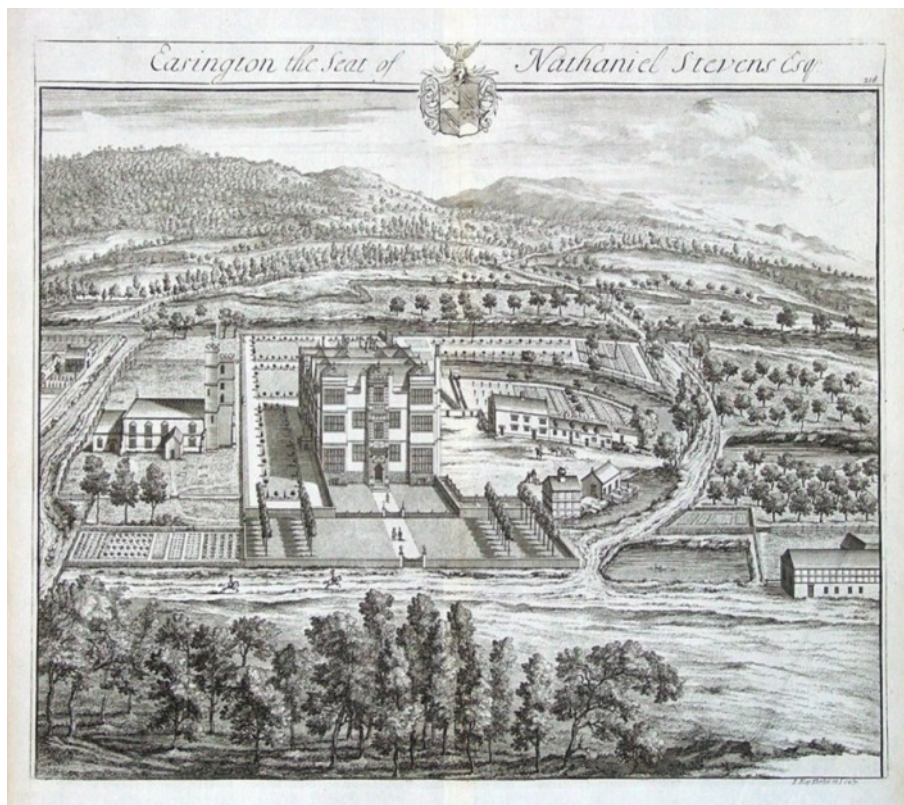
The present road that runs in front of the church once formed the private drive to the manor house. Churchend itself was linked to the main road into the village by a lane that once ran from the corner of the churchyard and linked up close to where the driveway to Eastington Park now is. It is thought to have been known as Church Way.



## Our History

When Eastington Park was built by Henry Hicks around 1815, Church Way was closed off, with the manor's former driveway now becoming the road to Churchend. So, many of us regularly drive or walk along the road that once took important visitors to the main entrance of the manor house, something we wouldn't have been able to do a few centuries ago!

Like a lot of land, mills and other buildings in the village, in 1806, Henry Hicks bought the rights to the manor from the Stephens family, thereby assuming the role of lord of the manor.



This engraving of 1712 shows the Stephen's manor house, adjacent to the church at Churchend.

It was engraved by Johannes Kip, a Dutch draftsman, engraver and print dealer originally from Amsterdam. Along with his business partner, Leonard Knyff, he specialised in making engraved views of English country houses. There are few in this part of the world that he didn't draw. His speciality was this type of birds-eye view, although he did sometimes seem to take a few liberties with scale and background. According to his engraving of Eastington Manor, then the seat of Nathaniel Stephens ('Stevens'), the house dwarfed the church and its position in the landscape looks a bit suspicious! Nonetheless, his detailed views of the

buildings themselves provide a fascinating snapshot of times long gone.

At least the Stephen family wouldn't have struggled to park their cars in front of the house at school times!

**Stephen Mills**

\*\*\*\*\*

### Frampton on Severn Bowls Club



**At last the good weather has arrived. I have to be honest, it isn't the best game in the world when you have wind, rain and hail. Anyway that is in the past and we look forward good weather and some good bowling.**

At Frampton we cater for all ages and all skill levels: Plenty of Friendly games against neighbouring clubs, as well as League games and Cup games. Nothing better (except playing that is) than sitting on the balcony of the clubhouse watching a good game of competitive bowls on a summers evening with a cool drink.

This is a great time of year to try the game. Why not come up and have a go. We can lend you a set of bowls and footwear (trainers are ok). The green is open most days from midday onwards. Please contact our Club Secretary Tom Griffiths on 01452 740013 and he will organise for somebody to meet you at the Green.

## Councils



### ANNUAL REPORT 2015-16

#### Welcome to the Annual Report 2015/16 on the activities of the Council.

You will find details of how the Council spent its money and how the Council funds this expenditure.

The Parish Council consists of 9 councillors who represent an electorate of approximately 1,246. Elections are held once in every four years, the last one was uncontested in May 2016. We currently have 7 councillors and 2 vacancies following the election process.

The Parish Council has a number of responsibilities in the village including: Burial ground, closed churchyard, play area, notice boards, bus shelters, and grass cutting of the parish owned open spaces.

The Parish Council employs 1 part-time member of staff to manage all Council matters.

The Council meets on the second Tuesday of the month in the Methodist Church in Eastington. Agendas are displayed on the village notice board and also on the website – <http://community.stroud.gov.uk/eastington>. The public are welcome to attend these meetings and raise questions during the 20 minute public forum at the start of the meeting.

We keep residents updated on parish matters through our website, the Eastington Community News and you can follow us on Twitter (@Eastington\_PC) or on Facebook (EastingtonPC).

Contact details: Tel: 01453 799616  
Email: [eastingtonparishcouncil@gmail.com](mailto:eastingtonparishcouncil@gmail.com)

#### **Parish Councillors elected 5<sup>th</sup> May 2016:**

|                  |  |
|------------------|--|
| Pauline Allen    | <a href="mailto:p.allen@sagnet.co.uk">p.allen@sagnet.co.uk</a>   |
| Alex Bomberg     | <a href="mailto:bomberg@international-intelligence.co.uk">bomberg@international-intelligence.co.uk</a> |
| Muriel Bullock   | <a href="mailto:murielbullock@gmail.com">murielbullock@gmail.com</a>                                   |
| Jennifer Corrie  | <a href="mailto:jenniferfcorrie@yahoo.co.uk">jenniferfcorrie@yahoo.co.uk</a>                           |
| Andrew Cozens    | <a href="mailto:andrew.cozens@farmline.com">andrew.cozens@farmline.com</a>                             |
| Alison Loveridge | <a href="mailto:aliloveridge@outlook.com">aliloveridge@outlook.com</a>                                 |
| Jill Simmons     | tel: 01453 825303 (no email)   |

#### Chairman's Report

Councillors have had another busy year and thanks are extended to those along with Parishioners who participated in opposing the planning application for 1,350 houses West of Stonehouse (the Parish Council's preferred name for this development is Oldbury End). Many of the people involved in this were also participating and attended the examination in public of Stroud District Council's Local Plan; many hours of unpaid work went into both these actions and also into our Neighbourhood Development Plan (NDP) which is almost at the referendum stage.

We are very fortunate in having employed a highly qualified clerk Julie Shirley, who has been invaluable in helping to complete among other things our NDP which has at times been frustrating and time consuming. She has also updated all the Councils policies to ensure we are fully compliant.

Planning has also been very challenging and the Council decided in July to formally adopt a planning committee so we could have public meetings and it has been very encouraging to have members of the public present and contributing to these meetings.

The other groups on the Council have also contributed to the smooth running by taking on tasks and writing reports for our monthly meetings many thanks to all concerned.

The new development at Swallowcroft is almost complete with some house already occupied. There are still outstanding issues with Millend Mill which the Council are pursuing with Stroud District Council.

The new playpark at Snakey Lane was officially adopted by the Council in June 2015. Thanks have to go to the friends of Snakey Park for all their hard work in getting this project off the ground. They still have things they want to add and thanks to the section 106 money that will be coming from the Swallowcroft development this should be possible. The friends are still taking on responsibility for regular safety checks with reports to the council.

**Cllr Muriel Bullock - Chairman**



## Councils

### Eastington Parish Council

Mrs J Shirley – Parish Clerk  
60 Hawk Close, Abbeydale  
Gloucester GL4 4WE  
eastingtonparishcouncil@gmail.com  
01453 799616

#### Receipts & Payments Account for the Year Ending 31st March 2016

|                                  | Year ended 31 March 2016 | Year ended 31 March 2015 |
|----------------------------------|--------------------------|--------------------------|
| <b>Receipts</b>                  |                          |                          |
| Precept                          | 60,300.00                | 51,588.00                |
| Local Council Tax Support Grant  | 1,785.00                 | 2,602.00                 |
| VAT refund                       | 3,596.82                 | 1,345.69                 |
| Burials                          | 3,715.00                 | 4,122.00                 |
| Bank interest received           | 31.44                    | 12.97                    |
| Rent and wayleave                | 77.38                    | 73.51                    |
| Donations                        |                          | 2,000.00                 |
| Other                            | 11,613.77                | 6,995.00                 |
|                                  | <b>£81,119.41</b>        | <b>£68,739.17</b>        |
| <b>Payments</b>                  |                          |                          |
| VAT                              | 1,769.48                 | 1,909.29                 |
| Hall hire                        | 357.00                   | 372.73                   |
| OHMG ground maintenance          | 1,921.02                 | 1,865.07                 |
| Grass cutting                    | 4,450.00                 | 4,275.00                 |
| Office expenditure/phone         | 1,343.16                 | 526.95                   |
| Severn Trent Water               | 44.22                    | 36.25                    |
| Audit & legal fees               | 485.00                   | 535.00                   |
| Grants and donations             | 574.60                   | 150.00                   |
| Subscriptions                    | 954.68                   | 307.00                   |
| Training                         | 517.50                   | 870.50                   |
| Loan repayments                  | 5,522.96                 | 5,522.96                 |
| Insurance                        | 763.36                   | 1,106.60                 |
| Payroll services                 | 97.30                    | 0.00                     |
| Staff costs                      | 16,338.21                | 9,229.50                 |
| Expenses: Clerk and council      | 585.95                   | 1,340.55                 |
| Graveyard Burial Ground repairs  | 2,647.00                 | 112.27                   |
| Footpaths and kissing gates      | 565.00                   | 0.00                     |
| Planning expenses                | 8,485.00                 | 7,278.98                 |
| Repair projects                  | 0.00                     | 4,632.25                 |
| Professional representation fund | 0.00                     | 8,560.00                 |
| NDP/Parish plan                  | 9,356.87                 |                          |
| Roads and Transport              | 501.39                   |                          |
| Other                            | 339.85                   | 3,020.00                 |
|                                  | <b>£57,619.55</b>        | <b>£51,650.90</b>        |

#### Grants & Donations

The Parish Council has a small donations budget and has been able to support groups and initiatives during the past year:

|                              |                |   |      |
|------------------------------|----------------|---|------|
| Eastington Community Orchard | £274.60        | Royal British Legion (replacement cheque) | £100 |
| Citizens Advice Bureau       | £100           | Royal British Legion Poppy Appeal         | £100 |
| <b>TOTAL DONATIONS</b>       | <b>£574.60</b> |   |      |

#### Budget 2016/17

The Parish Council has requested a precept figure of £66,570 to support a budget of £69,115. The precept is slightly increased from last year and represents an increase of 5.46%, mainly due to the withdrawal the local council tax support grant.



## Events



Sunday 12<sup>th</sup> June 2016

6pm

St Michael & All Angels, Eastington Church

**Celebration of Church Music &  
Queen's 90<sup>th</sup> Birthday**

*Supported by the Eastington Church Choir &  
the Cotswold Youth Singers*

*Followed by Bring-and-Share Picnic in the Churchyard*

**RSEM Music Sunday**  
THE 30-30 CAMPAIGN



**Eastington Church's  
Summer BBQ and Splash Party**

**Saturday 2<sup>nd</sup> July 2016**

**BBQ**

5.30pm

**BBQ  
Refreshments  
Swimming Pool  
Open Garden**



**Admission £1 Adults 50p Children**

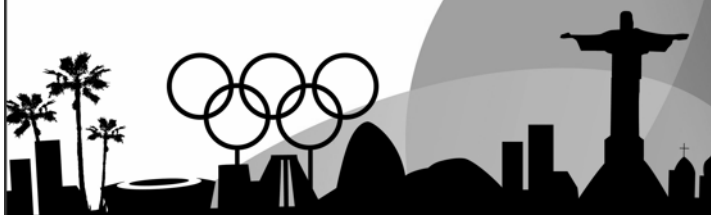
**Tickets available on the door and in advance  
from Robin and Celia Harris (01453 823433)**

**All proceeds to Eastington Church Funds**



# Duck Races

**@Eastington Primary School**  
**Sunday 26th June, 12.15 to 3pm**



**BBQ . Real Ale . Bouncy Castle . Games . Cakes**  
**Fun for all the family!**

**Rio2016**

### "MUSIC FOR A SUMMER'S EVENING"

Come to a great concert by the renowned Dursley Male Voice Choir and help to raise much-needed funds for Citizens Advice: Stroud District at the same time!

**DURSLEY MALE VOICE CHOIR CONCERT**

**Saturday, 2<sup>nd</sup> July at 7.30pm in St Mary's Church,  
Painswick**

**Tickets: £10 Under 16's Free**  
**Refreshments and Raffle available**  
**phone Ann Horner 812128 for more information**

**By the Community for the Community**