

## Signpost

### Your news... *your* ECN!

Contributions to ECN are welcome from anyone connected with Eastington Parish, past or present. Send your copy by email to the Articles Editor ---  
**articles@ecn.me.uk**

**Next deadline for submission: Friday 11<sup>th</sup> November**

Next Delivery: Sat/Sun 26<sup>th</sup>/27<sup>th</sup> November

*The editor reserves the right to reject or shorten contributions.  
 The views expressed in ECN are not necessarily those of the editors.*



### Inside this issue...

#### EDITORIAL

2 Thank you Andrew Niblett

#### GROUPS

7 New Community Orchard  
 10 Teddy Tunes  
 16 Slimming World  
 18 PROWD and Eastington Walkers  
 24 Jolly Joggers

#### COMMUNITY

3 Class 4 is inspired!  
 8 Make your home more secure  
 11 New Owners at the Kings Head  
 12 River Frome paleo-channel restoration  
 17 Neighbourhood Development Plan  
 22 William Morris Community Centre

#### EVENTS

4 Autumn Flower Show  
 6 Eastington Horse Show  
 9 Award for Millend Mill  
 19 Quiz Night

#### COUNCILS

14 Parish Matters  
 15 District Councillor Letter

#### CHURCHES

13 Eastington Methodist Church  
 19 Harvest Festival  
 20 Eastington Church - St Michaels

### Diary Dates

#### **Harvest Festival**

St Michael and All Angels  
 2<sup>nd</sup> October, 10:45

#### **PROWD Meeting**

King's Head  
 3<sup>rd</sup> October, 10am

#### **Village Quiz**

Community Centre  
 7<sup>th</sup> October, 7:30

#### **All Souls**

St Michael and All Angels  
 6<sup>th</sup> November, 6pm

#### **Apple Day**

Community Centre  
 22<sup>nd</sup> October from 12pm

#### **Ecotricity Drop-in**

Eastington Village Hall  
 17<sup>th</sup> November 2-8pm

See photographs from ECN in colour on our website: [www.ecn.me.uk](http://www.ecn.me.uk)

## Editorial

*After many devoted years Andrew Niblett is retiring from his editorial role with the ECN.  
Happily, he remains in an advisory role,  
but his editorial contributions to the magazine will be greatly missed.*

### Thank You, Andrew

We are extraordinarily lucky in Eastington to have a few very special people who devote a large part of their lives to the community as a whole. Andrew is without doubt one of these. Chairman of the Parish Council for many years, he has always worked hard to promote harmony and to defend our village from the ravages of inappropriate development. Over 25 years ago, when the Parish was first threatened with a huge new development, Andrew together with some like-minded people, became concerned that residents often did not know what was going on - no internet in those days, remember! So they began to publish the Eastington Community News. The objective was to keep the whole community in touch both with what the District and Parish councils were doing and what the community as a whole was thinking.

Alas, 25 years on, we are faced with the reality of such a development despite so many people having fought against it so hard for so long. They say that you "can't buck City Hall" - but we did for a very long time - and now as a well informed and connected community we are, hopefully, well placed to minimise the damage to our way of life.



The initial concept of ECN was very ambitious - a free delivery to every home in the parish, no less - but the need at the time was pressing. It is a great tribute to Andrew's passion, determination and sheer hard work that this ambitious concept has been sustained for a quarter of a century and is still going strong. Perhaps for some these days a bi-monthly publication does not compete with other media for instant news. Perhaps the emphasis has shifted somewhat towards a celebration of what makes us US. This is no less valuable - most of us enjoy the real spirit of community that we have in Eastington, and keeping in touch with our traditions, our institutions, our people, services and general 'goings on' is all a part of that.

So we thank you, Andrew, for helping to start this publication, for helping to produce it when things were a lot trickier than they are now and for editing it so skilfully over all those years. Also, we hope, for continuing to mentor this on-going provision of technology-free information and celebratory reflection of all things Eastington.

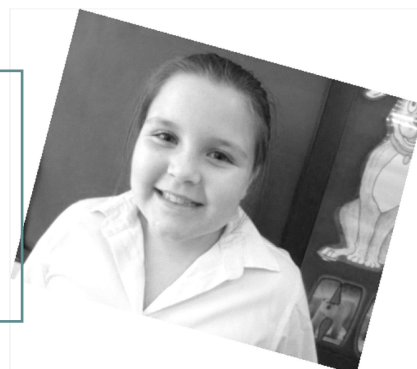
Jan Low  
on behalf of the ECN editorial team

## Community

### Class 4 is inspired !

Here in Class 4, we have started our new school year thinking about our dreams, aspirations and how we could try to achieve them. We have been inspired by stories of athletes who, when they were children, set themselves the goal of representing their country at the Olympic Games... and then realising their dream when they were medal winners at Rio 2016!

I would love to achieve great things with my swimming in the future as it is something that I really enjoy. I think that to do well in this sport, I will need to be resilience and confident. It will be important that I work hard to keep fit and healthy and be a good sport role model to others.  
By Ava



My dream is to become a singer and do art in my spare time. I listen to music all the time and I practice everywhere, everyday. I need to stick with it (be resilient) and not give up, even when it gets really tricky.  
By Raphy

My dream is to be a good swimmer and maybe be in the Olympics but I have two other dreams. My second is to be a mum because children bring happiness into the world. My third is to work with pets. Artists have always inspired me so when I am older I want to be an artist and swimmer maybe fashion designer I don't know yet but I will know someday.  
By Erin



My dream is to do well in D.T as I love creating models and toys. My dream in life is to be a Lego designer. I hope to inspire other people that if you work hard and don't give up you can achieve your dreams no matter what.  
By Ollie

My dream when I am older is to be a pro at acting. This has been my dream since I was 5 years old. I started attending drama school about a year ago and have been in a movie! I have also achieved performer of the term which I was very happy about. The things that will help me at school on the way will be my English skills and being resilient.  
By Florence



## Events

### A Grand Day Out – at the Autumn Flower Show

The rain outside was being welcomed by the growers queuing to show off their produce at the Autumn Show in the Village Hall. For the rest of us, here was a good opportunity to visit something indoors with a whiff of competition between friends and neighbours – a truly village occasion.



To brighten up the day, here are some of the flowers (see in colour on [www.ecn.me.uk](http://www.ecn.me.uk))

Across the flower classes, eight different people won a prize of some sort, including Betty Barnfeld. She has been entering for 34 years since her husband Bob was one of the founder members.

**Over at the cakes, by contrast, the winners were first-timers**

It has taken Margaret Lawrence (left, cash prize in hand) 43 years and Jo Pegler 32 years in the village to make their first entry, yet the judges of the Victoria Sponge were very impressed – they'll be back next year with more



**Children's Cakes were rewarded with a box of sweeties** - as well as a share of the grand array of trophies donated down the years. There were thirty entrants this year, including 8 new names, which was very encouraging.





## Events

### The autumn Show is mainly about the veg harvest

These trays are called "Top Table", the pinnacle of a show as the name suggests.

First prize went to Queenie Jones who went on to scoop the Stroud Cup.



**Queenie is seen here with Roger Hughes, winner of the Presidents Cup.**

Not for the first time, Queenie accumulated most points in show (48) with wins in all adult categories. Will she be seriously challenged next year?



**TEAS (The Eastington Allotments Society)** had a fair showing - Roger Hughes, the Gribbles and the Dingles and Shaun Ireland were significant competitors. However, with 28 allotments, surely there are more allotmenters with good crops worth showing? Follow the link below and start planning NOW!



**Plenty time for TEAS, and anyone else, to get organised for next year - Have a look at the classes from the previous Spring show here [www.ecn.me.uk/pdfs/springschedule2016](http://www.ecn.me.uk/pdfs/springschedule2016) and get digging.**

## Events

### Eastington Horse Show

It seemed unbelievable that another year had passed and we were in the frantic preparations to get another show off the ground. It is a lovely old pasture, but systematic archaeological digging across the field required a lot of preparation to stage the show.

A lot of work is required to get the show organised, and we are indebted to so many who unstintingly give their time and efforts, not least to control the traffic.

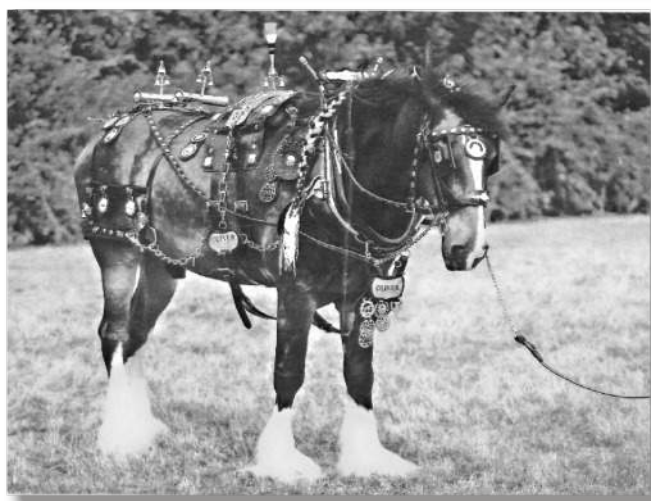


The sun shone, and most of the rings were well supported.

Coloured horses seem to be very popular and completely filled the rings in some of the classes.

The class catering for 'horses suitable for driving' had Shire horses to the other extreme – a 12.0hh Welsh pony.

There was much enjoyment in the gymkhana ring, and some very colourful, imaginative and topical fancy dress competitors.



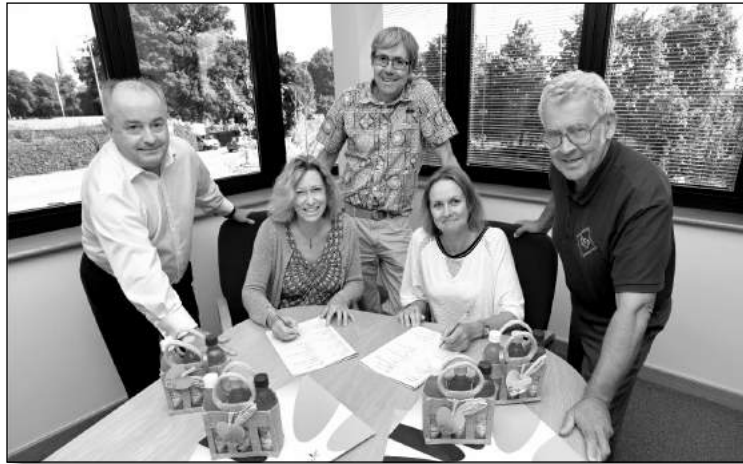
Thank you to all the sponsors and the many helpers without which the show would not happen. The proceeds (over £2,200) will be donated to village organisations and the Air Ambulance.

The Eastington Horse Show Committee

By the community for the community

## Groups

### New Community Orchard Signed Up Cottsway Housing sign over Brownings Orchard to ECO



Debbie Cunningham, Orchard Warden for Brownings Orchard, completes the signing in the presence of the Cottsway Housing Chief Executive, August 9<sup>th</sup> in Witney.

Looking on are Steve Gribble and Tom Low of ECO and Vicki Paxford of Cottsway performs as witness.

#### Village Centre green space (eventually)

Brownings Orchard is less than 200 yards from Alkerton Cross, tucked in behind the Kings Head House so ECO is hoping for a bunch of new recruits to help clear and plant up this handy new facility.

Not that it is all plain sailing – hedges are seriously overgrown and the world's supply of brambles lies within. Debbie, Tom and Julian made a first attack using chainsaw and bowsaws and, as you can see, didn't actually reach the inside. More clearing will be needed before a general work party can be called.

ECO were very pleased to learn that the Trustees of the Charlie Bullock Fund had awarded them £8,200 to pay for maintenance equipment and various access expenses. This will be used both for the grass cutting in Coneygree Community Orchard and the taming of Brownings Community Orchard. Secure shed storage for the kit is included plus better access ground and gates for Brownings Community Orchard.

**Thank you, the Trustees.**



*This looks easy chaps?*



*Oh, no, it's not!*

Watch for news on *FaceBook* and the [www.ecogroup.me](http://www.ecogroup.me) website, where you too can sign up for exercise in the fresh air with ECO.



## Community

### When out at Night Leave on a Light

Opportunistic thieves prefer to work when they are hidden by the darkness so most burglaries occur at night. This means it's no surprise that the number of burglaries increases as the nights get longer during the autumn and winter months.

By making sure all your doors and windows are always locked, leaving lights and/or televisions on to make your home look occupied when it's not, we can begin to reduce the number of burglaries. Please take the time to read out five top tips below to help tackle this increasing number of burglaries.

#### Top 5 tips to make your home more secure during the winter months

1. Burglars are less likely to target a home that looks occupied. Use a timer to switch lights on when you're away.
2. Close your curtains and blinds so burglars can't see your valuables through your windows.
3. Lock your sheds and outbuildings – and an outside light can blow the cover of darkness for a would-be thief.
4. Carry out a general security check. It takes no more than two minutes to lock your windows and doors.
5. Dispose of your empty boxes carefully do not leave them outside and advertise to the burglars your new TVs and expensive gadgets.

You can purchase crime prevention items from our reception at Stroud Police Station, Light timers £2.20, Shed Alarms £8.00 and Smartwater £10.50 are just a few of the popular items that we sell. Smartwater is a good way of marking your property with a unique code to you and makes reuniting you with your property easier and thieves don't like it.

Have you also thought about joining a local Neighbourhood Watch group? Essentially it concerns crime prevention but, just as importantly, it involves neighbours working together as a community to make their area a safer place. This in turn instils a sense of security amongst residents, knowing their homes and other property are being cared for by their neighbours. This and an improved social contact are the hallmarks of a successful Watch.

**Please Contact PCSO 9081 Liz Ward if you need any advice, Stroud Police Station**

**elizabeth.ward @gloucestershire.pnn.police.uk**

**Phone 101 non-emergency**

#### **C.C.S Property Maintenance Services**

Please note that the mobile phone number

Printed in the blue pages should read:

**Call Paul on mobile 07831 689000**



## Events

### Millend Mill gets its Plaque

Readers might remember that earlier this year, ECN reported (in the February-March issue) that Millend Mill had been given an award for the 'best creative re-use of an industrial building'.

This is one of the awards given annually by a prestigious national body with a particular interest in Britain's industrial past – the Association for Industrial Archaeology (AIA).

Millend's success was announced at the Association's conference held at the Museum of Science and Industry in Manchester.



A few months ago, a small gathering was held at the mill where a beautiful bronze plaque was officially presented. The award was given by Keith Falconer OBE, formerly Head of Industrial Archaeology for the Royal Commission on Historical Monuments of England, and Industrial Archaeology for English Heritage. He is now chairman of the AIA.

Also represented was the architect responsible for the mill's restoration and conversion, and the developer's project manager. They were joined by Amber Patrick, an advisor to English Heritage, who nominated the mill for the award. I was invited as sort-of 'historical advisor' for the project. After the ceremony, there was some discussion as to where the plaque should be located. It was finally decided that it would go proudly by the mill's main entrance. Actual fitting should take place shortly, then everyone passing by will be aware that this humble local mill, once perilously close to collapse, is now considered to be of national importance. I call that a success!



Some of the attendees at the ceremony in front of Millend Mill's new water wheel.

Left to right:

Stephen Mills, Didier Ryan of Undercurrent Architects, Project Manager James Lovett, Keith Falconer of the AIA, and Amber Patrick

Stephen Mills

## Groups

### Come and have a sing song at TeddyTunes!

Fun musical coffee mornings with Vanessa, her guitar and Granny Clare (on hand with biscuits and a smile for any nervous children or adults)! TeddyTunes is designed for parents, grand parents, carers and their children of any age!

Feel uplifted and rejuvenated with the joy that this wonderful musical experience will bring to you and your little ones...a warm welcome awaits.

At TeddyTunes we learn to sing new songs but not forgetting the lovely old nursery rhymes of our younger days. Relax afterwards with a cuppa, fruit and homemade cake...all in for £5.

It's a whole mornings entertainment!

#### Class details:

Every Thursday 10 - 11.30 at Frampton Village Hall  
£5 plus £1 for additional siblings.

Pay as you go. Start any week.

07806 802540 / 01453 828557

[www.teddytunes.co.uk](http://www.teddytunes.co.uk)

Find us on Facebook



## M. A. SMITH Local Builder

Call for a friendly chat  
and a free quote

***No job too small***

Phone: 01453 820 860

Mobile/text: 0771 750 7789

Email: [gus8max@hotmail.co.uk](mailto:gus8max@hotmail.co.uk)

4 Cotswold Avenue Eastington GL10 3AR



#### St Swithuns Church Leonard Stanley

extend a warm welcome to their

#### Christmas craft and produce fayre

Saturday 19th November

10am till 2pm

A chance to do some early Christmas shopping.

16 stalls to choose from

Amazing raffle prizes

Fun for the children; face painting, lucky dip, decorate a festive biscuit.

Delicious homemade refreshments

Free entry

## New Owners at Kings Head House Ring Changes Quietly

Jo Murray has been owner of the Kings Head House now for 3 months and things are changing for the better, slowly but surely.



Out have gone the battleship grey walls inside and the severe seating in the lounge bar, in have come more relaxed chairs and a softer colour scheme.

You will also have noticed the external improvements - the new paint, and the culling of the scrubby vegetation at the front in favour of a grassy site for the picnic benches. And guess what, moving the benches allows cars to park in front of the hotel! Simple things which improve the welcome, or "greeting" as Jo prefers to call it.

The Greeting is further improved by changes to the entrance *"The old double entrance was a cold and draughty place, now people come straight into the bar and have a much better experience from the start"* says Jo, *"people know where we are and we can guide them straight on to their table, room or help them to a menu"*. And Jo is indeed very welcoming and often there to greet people in person.

Jo and her partner Ceiran already have six pubs, restaurants some rooms, in Ealing and the Home Counties but this is their most extensive venture and their first Free House. *"It was always my dream to have a B&B one day, just to be self-sufficient – I'm a whizz with eggs - but now I have a hotel with a lounge bar and private dining areas, definitely not just a B&B!"*

Although few in the parish will have seen them, the bedrooms were very well restored by previous owner Dorian and there has been *"absolutely no need to change them"*. The rear garden, too, is adequate for now - given a choice between a new garden and new downstairs curtains, Jo has opted for the warmth of the curtains to complete the "cosying up" of the public rooms.

Settling in new staff, to deliver a standard of experience to clients with which she can be satisfied, has required Jo to live over the shop full time. *"The core posts, like Chef, are in place but recruitment is on-going. I have been able to introduce own-baked cakes for coffee time and an innovative Saturday and Sunday Brunch menu. Everything is made from fresh ingredients, sourced locally where possible, and often from clients' recommendations"*.

Village people will find the Kings Head House more welcoming of family parties than has been the case in recent years, with more flexible use of the function room too. The Xmas menu will be available by the time you read this, to be served from early November on.

Jo and Ceiran will continue to try out improvements but are already enjoying a good rapport with a wide range of local people – as recent posts to Facebook attest – especially those who say they live "just over the road".

\*\*\*\*\*

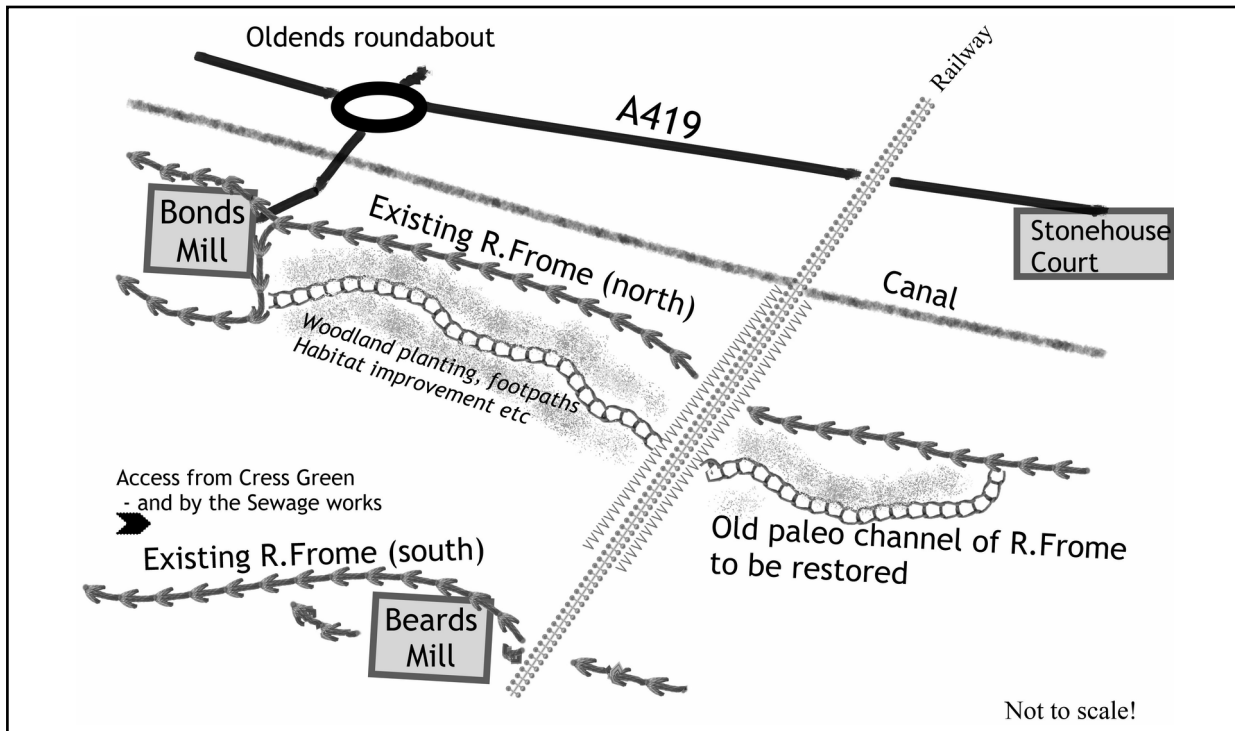
*From having no notable public houses of any sort just a few years ago, we are now so lucky to have two thoroughly excellent and complementary places to go to - for a quiet drink or meal, or a livelier social experience as the mood takes us. Ed.*

## Community

### River Frome paleo-channel restoration

The Severn Rivers Trust working in partnership with the Environment Agency are undertaking a series of enhancements to the River Frome to improve its ecological condition. The vision is to provide fish passage from the tidal River Severn to Stroud and on as far as possible. To date we have modified 4 structures and are investigating another 7 including the weirs at Fromebridge Mill and Whitminster.

The current phase of the project is working towards the restoration of a paleo-channel in the floodplain of Bond's Mill:- ('paleo' just means ancient)



This will allow fish to bypass the weir structures at Bond's Mill and be beneficial to key species such as Salmon, Sea Trout and eels. In addition to this, careful design will guide the development of a natural channel which will provide excellent habitat for wildlife, including local and UK species such as water vole, otter, and pipistrelle. These are considered important in the Biodiversity Action Plan.

Under the EU Water Framework Directive, we are committed to protecting and improving all waterbodies. Improving habitat connectivity is one way to help rivers achieve 'Good Ecological Status'.

This phase started in June 2015 and is scheduled to be complete before September 2017. Sadly, a pollution incident elsewhere has redirected priorities for the moment.

The project is very involved including many stages not least of which is public consultation. The event held in May this year supported restoring flow to the whole length of the old channel, the provision of footbridge(s) and footpaths along the length, and helped to define the planting plans.

#### Get Involved

We aim to involve the public as much as possible with this project – before, during and after construction.

If you would like to get involved - e.g. by monitoring invertebrates or wildlife -  
then please contact your local officer Melissa Hoskings

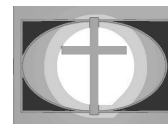
[Melissa@severnrivertrust.com](mailto:Melissa@severnrivertrust.com)

*N.B. - this will make a pleasant recreational area for humans too! Ed.*



## Church

### Eastington Methodist Church



Eastington Methodist Church Activities	
Baby & Toddlers Group	Mondays 10:00 – 11:30am
Prayer Meetings	Tuesdays 8:15 – 9:00am & Fridays 8:30am – 9:00am
Line Dancing	Tuesdays 10:30am - noon
Lunchtime Bible Study	Tuesdays 1:00 – 2:30pm
Evening Bible Study House Group	Tuesday 8:00 – 9:45pm at The Pike Lock House
Youth Club (11-18)	Fridays 7:00 – 9:00pm
Main Service (+ youth session)	Sundays 11am

*Please check on the web page for other events or variations or call to check what is happening. Unless stated otherwise, these are held at EMC which is opposite the butchers in Eastington.*

#### **Matthew 11:28-30** New International Version (NIV)

[Jesus said] “Come to me, all you who are weary and burdened, and I will give you rest. Take my yoke upon you and learn from me, for I am gentle and humble in heart, and you will find rest for your souls. For my yoke is easy and my burden is light.”

#### **Café Church**

The next Café Church is on October 9<sup>th</sup> and follows the new format of being on the second Sunday of the month. It is the last one following the Christianity Explored theme. The one in November coincides with Remembrance Sunday and, as well as being a café style church, might also be an opportunity for a parade service for the new Brownie group that has started meeting at the church. This will present some interesting layout challenges but we look forward to the opportunity.



#### **Youth Club**

The youth club ran throughout the summer with the exception of one Friday early in September and the two summer days out to the beach and the waterfalls were successful and enjoyed by those who went. Numbers in the autumn tend to peak at youth club as the evenings draw in and there are perhaps fewer competing things going on. That said, we still welcome new faces or the return of ones that might have been away for a while. In terms of additional events, there is a themed sleepover planned for October 8<sup>th</sup>/9<sup>th</sup>.

Some of the young people are also attending on Sunday mornings at 11am when, after starting with the rest of the congregation, they split off into their own group. If there is nothing happening at EMC, we often take them to youth appropriate Sunday evening events or services at other churches in the wider area.

Ken Burgin – Senior Steward

Ken, Beck & Liz Burgin 01453 827414

[www.EastingtonMethodists.org.uk](http://www.EastingtonMethodists.org.uk)

## Councils

### PARISH MATTERS

The Parish Council is pleased to welcome our two new councillors – Sharon Wells and Mark Chatterley who we hope will enjoy serving on the Council.

We have received additional documents from Ecotricity; these are available on the Stroud District Council planning website at [www.stroud.gov.uk/apps/planning](http://www.stroud.gov.uk/apps/planning) ref S.16/0043/OUT. There are a lot of additional documents to read through on the website. We've been advised that this application will be considered by Stroud District Council in early 2017 so we have time to go through the documents in detail. We understand that Ecotricity is arranging another public drop-in event, possibly 17<sup>th</sup> November.

We have also recently received the West of Stonehouse masterplan for consideration – this is also on the Stroud District Council planning website ref S.16/1965/DISCON. This application will go to the Development Control Committee for decision on 25<sup>th</sup> October 2016.

The Eastington Neighbourhood Development Plan passed referendum in August with 91% in favour of the plan, and we had the highest voter turnout at 29% of the 4 referendums that took place in Stroud district that day.

We're pleased to have been able to purchase 3 Automated External Defibrillators for the parish with the assistance of British Heart Foundation, Old Badger Inn and Westend Suites. Cllr Jill Simmons proposed that the Council purchase 3 defibrillators back in March 2016 and the Old Badger Inn were quick to respond in fundraising towards the units. The local pub organised an array of fundraising activities and raised a fantastic £3,100 which means we have been able to buy and install the units without using council tax funds.

The defibs were purchased via British Heart Foundation and will be located at the Owen Harris Memorial Ground, Westend Suites and hopefully Co-operative Supermarket. Funding and listed building restrictions permitting we'd like to install a 4th defib at St Michael's & All Angels Church.

As part of the package from British Heart Foundation we were given a Call Push Rescue Training Kit and we'll be putting on free community training in due course. Training dates/times will be published on our Facebook and Twitter pages.

Our new website has gone live – please visit us on [www.eastington-pc.gov.uk](http://www.eastington-pc.gov.uk), and the Clerk has a new email address [clerk@eastington-pc.gov.uk](mailto:clerk@eastington-pc.gov.uk) although the old email address will continue to work.

Finally, the Parish Council has decided to change meeting venue and day to meet on the second Thursday of every month commencing with October's meeting. We'll be meeting at the Village Hall which we hope will be a more central location for people to come along.

So....

**The next full Council meeting will be held on Thursday 13th October at 7pm at the Village Hall.**

Julie Shirley Clerk to Eastington Parish Council  
01453 799616  
[clerk@eastington-pc.gov.uk](mailto:clerk@eastington-pc.gov.uk)

## Councils

### Letter from our District Councillors

Congratulations on the vote to adopt the Neighbourhood Plan.



This is going to be a great help in defending ourselves from inappropriate development and promoting planned development in Eastington. We have been working with the Stroud District Council Planning Department and the Parish Council on how this will work going forward. Throughout August there have been no District Council Committee meetings so it has been a little less busy but the planning challenges continue and there have been at least 4 that we have been involved in recently. Also now that summer is over we have just received the detailed application for the West of Stonehouse which will go to the Development and Control Committee and we will be working with the Parish Council on the response. We are also expecting further details on the Ecotricity Proposal although it is not yet clear when this will come to the Development and Control Committee. This may be after Christmas.

On other matters the new Waste Collection process is rolling out and if you have any questions, complaints or of course compliments let us know.

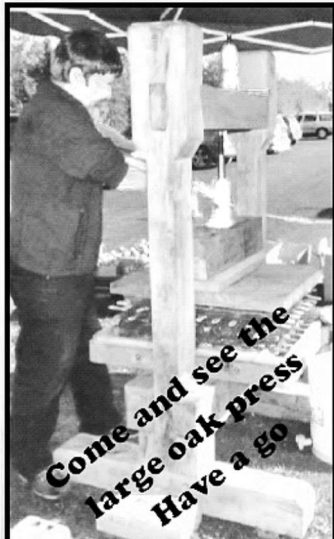
As ever we can be contacted at:

Cllr John Jones [cllr.john.jones@stroud.gov.uk](mailto:cllr.john.jones@stroud.gov.uk) or 07808 922 918.

Cllr Stephen Davies [cllr.stephen.davies@stroud.gov.org](mailto:cllr.stephen.davies@stroud.gov.org) or 07802 595 307





**Eastington Community Orchard Group**



**Come and see the large oak press**  
**Have a go**

**APPLE DAY 2016**  
**OCTOBER 22nd**  
**From 12 pm**  
**Eastington Community Center**  
**Have a go, 'Chopping & Pressing'**  
**Bring your own Apples 'n' Pears**





## Groups

### Eastington and Stonehouse Slimming World

Another summer draws to a close and we find ourselves at the start of Autumn. The nights are drawing in and at Slimming World we are preparing for how the change of season also changes the choices we make with our food. The salads and bbq's fade away from thought and are replaced with warming comfort foods instead. Hearty casseroles, tasty soups, warming curries and chilli, jacket potatoes, roast dinners and the seasonal winter veg makes a return to our plates as well. So at group over the next few weeks we will be learning how to make all of these meals, to keep us feeling full in the wintertime months and yet still lose weight to make our weight loss goals and dreams a reality.

All sessions are busy with fab weight losses being achieved. Lots of ideas being shared and support being offered, friendships forged as we all help each other on our weight loss journeys.



In August we celebrated our Women of the Year winners and enjoyed sharing food tasters in each session.

Everyone brought along something to share and there were plenty of new ideas to then try out at home ourselves.

Congratulations to each group winner Gay, Donna and Vikki.

It's been lovely to continue to welcome new members each week over the summer months to start their weight loss journeys, both men and women are welcome and we also offer

help to our young adults, 11-15 year olds, who want to learn about healthy eating as they become adults responsible for their own food choices.

So if you would like to lose weight at a friendly and supportive group come along and find out more. We meet in Stonehouse Community Centre at 9.30am on Wednesday morning and in Eastington Village Hall at 5pm or 7pm on Wednesday evenings. I look forward to meeting you.

### Snakey Park - Eastington Playground Project

The Friends of Snakey Park are a group of volunteers that work to maintain and improve the play area.

If you'd like to find out more and get involved please get in touch.

[www.facebook.com/Eastington.playground.project](https://www.facebook.com/Eastington.playground.project)



**Eastington Playground Project aims to provide an inspiring play area for all ages in Eastington.**



## Neighbourhood Development Plan NDP Referendum

Thank you all for supporting the Parish NDP. 91% of the votes cast supported the NDP. Over 400 parishioners voted, a turnout of 29%. The highest turnout of the night - Stroud who were also voting for their NDP had a turnout of just 21% so not bad Eastington.

The next stage is the formal adoption by Stroud District Council in October described by David Hagg, the CEO, as a formality. The parish NDP has the same legal status as the SDC Local Plan. Over the last few months SDC has been concerned that at planning appeals the inspector has "overruled" the Local plan in favour of "sustainability". At the same time as the parish NDP has gone through its various stages we have expressed concern that SDC planning officers have chosen to ignore the NDP and indeed have also ignored the SDC Local Plan.

Stephen Davies, our District Councillor, has expressed our concerns that if we are to go through so much to get a plan it must indeed be followed. That message has now been understood sadly a little late for the Meadow Mill application. David Hagg has asked Neil Carmichael, our MP, to raise the concerns of the Council that inspectors have been setting aside policies in the Local Plan and granting planning permission with the Secretary of State. We have asked Neil to take up our cause with SDC on the same issue.

The Parish will now need to work differently with SDC on planning applications and we need to agree how we are going to work to avoid tensions of interpretation around the respective plans. It would not be helpful for Officers to be recommending applications that the Parish opposed based on the NDP. It is essential we resolve these differences in advance and we learn to work closely on planning applications early on in the process.

Yes we are in the vanguard of NDPs in the district but soon there will be many more. Each Councillor will need to support their respective NDP and as some of those Councillors with an NDP will be on the DCC (planning committee) this becomes ever more important.

There is a real need to understand in detail the NDP and the Local Plan and how the policies contained within these documents inform how we respond the Planning Applications that come forward. If we are to support an application then we need to be clear why and on the basis of which policies. If we are to oppose an application we need to apply the same logic.

The change that the NDP creates is a challenge to our parish. We will be judged on how we respond to that challenge. The Parish Council in the future will be opposing unpopular planning applications based on our NDP, equally the Council may have to support just as unpopular applications for the same reason.

The frameworks that all applications are to work within are now clearly understood. Later this month there is a joint meeting with Planning Officers and members of the NDP project team to begin the work of developing a new working relationship. A very constructive response to recent concerns.

Daniel James

## Groups

### **PROWD (Public Rights Of Way Defenders)**

#### **And Eastington Walking Group**

Well, it seems a long time since the last organised walk on the 19th June. Where has the Summer gone ? !!

Our last walk was yesterday (18th September from the 'Badger'. About 16 people turned up and the weather was reasonable (it didn't rain!!). We walked to Cress Green, then over to the 'Viaduct' and then onto St. Cyrs' Church by Stonehouse Court. A short stop by 'The Ocean', then a return walk along the canal tow-path back to Chipmans Platt. A short distance then, back to the 'Badger'.

It turned out to be about a two-hour walk. So, well done to everyone who turned out!

It's been lovely the last few weeks to pick, and eat, fresh blackberries whilst walking along the hedgerows with my dog. I don't know if it's a 'sign of the times', but I never seem to see anyone 'Blackberrying' these days!!



Another wonderful surprise these last two weeks, has been to see a small flock of Curlew in the fields near Wicksters Brook.

They are very shy birds and it is almost impossible to get close to them before they fly off, making their characteristic 'Curlew' cry.

They tend to circle once, then fly off, with the silvery sheen of their wings glinting in the sunshine.

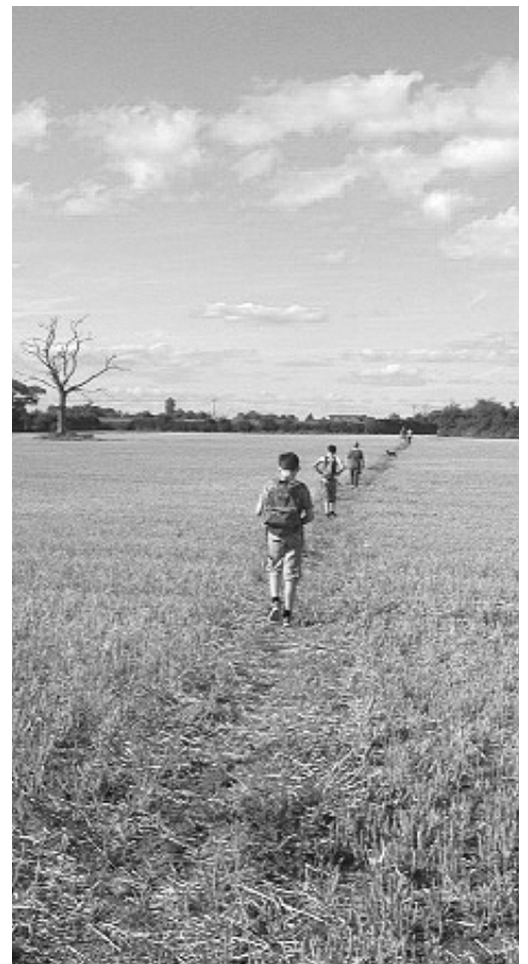
I believe that the next walk will be on Sunday 16th of October, but, check the notice boards to make sure.

Some people find it difficult to do long walks, so, If anybody is interested in doing 'shorter' walks during week-days, please let me know, and I will see what can be arranged. (phone 824452)

Next PROWD meeting : Monday 3rd October 10:00

at The Kings Head Hotel.

Bill Edwards ( PROWD )



## Church



### Eastington Village Quiz

All Organisations, Groups and Individuals  
are warmly invited to take part in the  
Eastington Church Annual Village Quiz at

**Eastington Community Centre**

**Friday 7<sup>th</sup> October 2016**

**7.30pm**

Teams of 6 – 8 people  
(or make up a team on the night!)

**Tickets £5 per person**  
(includes hot dogs and nibbles)

**Bar available**

**Raffle**

Please make sure you book your table by Saturday 2<sup>nd</sup> October 2016

Tickets available from:  
Robin and Celia Harris (01453 823433)  
Jacky and Mike Naylor (01453 828682)

All proceeds to Eastington Church Funds



Come along and celebrate harvest with us at our  
Annual Harvest Festival Holy Communion Service

**Sunday 2<sup>nd</sup> October 2016**

**Eastington Church**

**10.45am**



Service led by the  
Revd Angela Reeder

Singing supported by the  
Eastington Church Choir and  
Cotswold Youth Singers

Food and money collection for  
the local foodbank

## Church

### Eastington and Benefice Church Services in October and November 2016

Date	Time	Church	Service	Minister
<b>Sunday 2<sup>nd</sup> October</b> <b>Harvest Festival</b>	<b>10.45a m</b>	<b>Eastington</b>	<b>Harvest Festival Communion</b>	<b>A Reader</b>
<b>Sunday 9<sup>th</sup> October</b> <b>Trinity 20</b>	10.45am	Eastington	Holy Communion	L Smith
<b>Sunday 16<sup>th</sup> October</b> <b>Trinity 21</b>	10am	Standish	Benefice Holy Communion	TBA
	6pm	Eastington	Evensong	Lay-led
<b>Sunday 23<sup>rd</sup> October</b> <b>Trinity 22</b>	10.45am	Eastington	Holy Communion	P Freeth
<b>Sunday 30<sup>th</sup> October</b> <b>4<sup>th</sup> Sunday before Advent</b>	10am	Eastington	Holy Communion	TBA
<b>Sunday 6<sup>th</sup> November</b> <b>All Souls</b>	<b>6pm</b>	<b>Eastington</b>	<b>All Souls Service</b>	<b>P Freeth</b>
<b>Sunday 13<sup>th</sup> November</b> <b>Remembrance Sunday</b>	<b>10.45a m</b>	<b>Eastington</b>	<b>Remembrance Sunday Communion</b>	<b>J Hunnisett</b>
<b>Sunday 20<sup>th</sup> November</b> <b>Christ the King</b>	10am	Whitminster	Benefice Holy Communion	TBA
	6pm	Eastington	Evensong	Lay-led
<b>Sunday 27<sup>th</sup> November</b> <b>Advent 1</b>	10.45am	Eastington	Holy Communion	P Freeth

#### Eastington Church Library

The small library in our Parish Church continues to thrive and is well used. A comfortable well lit area has been provided for those who wish to sit and browse. We have extended the facility to include audio books and jigsaw puzzles.

If you have any contemporary novels or recent paper backs, audio books or jigsaw puzzles in good condition these are in great demand and any donations will be most welcome.

We do have some regular borrowers and buyers who find this small library a real community asset and we always need to restock. We need your support to help assure the future of the library.

#### A Time to Remember



ALL  
SOULS

A Service of Thanksgiving  
for the Departed

6pm

Sunday 6<sup>th</sup> November 2016  
(followed by refreshments)

St. Michael and All Angels' Church,  
Eastington

with the Eastington Church Choir



## Church

### **Upcoming special services and fundraising events**

Come along and celebrate harvest with us at our annual Harvest Festival Holy Communion Service on Sunday 4<sup>th</sup> October 2016 at 10.45am. Service led by the Revd Angela Reeder and Judy Cheshire. Food and money collection for the local foodbank.

All organisations, groups and individuals are warmly invited to take part in the Annual Eastington Church Village Quiz on Friday 7<sup>th</sup> October 2016 at 7.30pm at the Eastington Community Centre. All proceeds to Eastington Church Funds. Tickets £5 per person. Teams of 6-8 people or make a team on the night! Bar and Raffle. Tickets available from Robin & Celia Harris (01453 823433) & Jacky & Mike Naylor (01453 828682).

A Service of Thanksgiving for the Departed, the annual All Souls Service, will be held in Eastington Church at 6pm on Sunday 6<sup>th</sup> November 2016.

The Remembrance Sunday Service will be held in Eastington Church, followed by the war memorial in the churchyard at 10.45am on Sunday 13<sup>th</sup> November 2016.

Save the date for an Evening at Cleeve Cottage on Saturday 26<sup>th</sup> November 2016 at 7.30pm. Further details about theme and tickets will be published later this month. For more information, please contact Jacky & Mike Naylor (01453 828682).

### **VACANCY – Church Treasurer**

After a number of years, our current treasurer Ian Hodges has decided to step down as treasurer, thus creating a vacancy for this essential role in the life of the church and parish. The church is extremely grateful to Ian not only for the way in which he has maintained and presented the accounts, but also for agreeing to continue carrying out the functions of the role while we seek a successor.

The church is therefore looking for someone to take over as treasurer. You will need to have a good brain for figures and a sense of humour, but above all be dedicated. Experience is not necessary as full training can be provided. The vacancy does not carry a salary but is very rewarding.

If this is a role that you think you might be able to take on, or would like to explore further, please contact either Muriel Bullock (01453 826172) or Mike Naylor (01453 828682).

## Community

### William Morris Running On

I thought it might be useful for people to get a taste of the range of things we actually do at William Morris Community Centre.

We have a body of about 60 staff delivering support and education. We are not just a College but we are a specialist provider – this means we also provide 52 week residential packages through our new Bridging the Gap Programme, and independent living development opportunities through our Independence Houses. Accommodation became available as the camp hill live in co-workers left – this has allowed us to grow. We are planning further growth over the forthcoming year - with growth comes new opportunities, **we are particularly keen to hear from any parish or local residents who might be interested in working for us or with us.** We have a range of roles available particularly in our care, we provide full training that includes 4 complete weeks of specialist professional development across the year.

We have begun to support community groups to use our facilities; with the 'pay back' that maybe one or two of our students and residents (with their support) could join in. This month sees us hosting the annual Community Orchards apple squashing fest over several weekends, and the Yoga group starts on the 21<sup>st</sup>. Textiles is the next area we want to add to the portfolio. If anybody has any ideas around community groups or if you're interested in joining the staff please contact us through [recruit@wmcc.ac.uk](mailto:recruit@wmcc.ac.uk), or call us on 01453 824025, or even drop in at Chipmans Platt (on the left just before you get to the A419 roundabout), ask for Anne Edwards our HR coordinator and all round good egg. We'd be happy to see you.

*This short piece gives you a taste of where we are now and maybe a glimpse of the future.*

**The People we support** – an odd term to describe those who are at the centre of our organisation. Often described as the most vulnerable in our society, equally as often seen as people who require continuous and ongoing support. To us, our students, trainees and residents are all essential participants and contributors to both our local and the wider community. At our beautiful rural centre on the edge of the Cotswolds we support high needs, helping learners and residents to communicate, participate and then contribute to their community. We specialise in profound and severe learning difficulties including severe autism. A feature of the challenges that our learners and residents face is associated conditions such as epilepsy, communication difficulties and global delay. They face many barriers in their everyday lives, many are non-verbal and many face the physical manifestations that high levels of anxiety promote – such as challenging behaviour.

**Our staff** - We are fortunate in the quality of our professional staff, our provisions include a full educational programme and /or 52-week residential status based on careful assessment and analysis. But our greatest strength is the care that we provide, it is one-to-one, it is team led and it is delivered by staff who are given loads of training and support. Our Director of care Dawn, is hands on and vastly experienced – she sets the tone for a developing group of support and care staff who work right across all the provisions in play. Communication is at the heart of everything the staff do with the students and residents. Every one of them has a unique way of interacting with the world around them and our challenge and joy is to appreciate and understand how this works. This is so we can be better equipped to help them learn.

**Our programs** - One of the innovations this year will be the introduction of the 'brokerage model'. Simply put, this delivers bespoke pathways of support, learning and activities meshed with communication and therapeutic strategies to help them progress. It is a 24-hour job particularly, to take them on towards their

## Community

optimum point of independence – including living in the community. College students (see our latest CQC and Ofsted reports both recent, both good) enter a 'study programme' that fits in to our brokerage approach and provides individual progression.

Meeting individual needs in this way is enhanced by the structure of our programmes. For example, through our Health and Well-Being centre we supply a phalanx of therapeutic approaches that are embedded into individual programmes. We also deliver vocational and Social Enterprise opportunities to empower our learners and residents and provide actual outcomes through our Active Lives and Active Futures programmes. Everything is underpinned by a unique approach to support that includes carefully considered support and care, with specific accommodation meeting specific needs. Whether it is in College or in 'Bridging the Gap' apartment living or Independent living, or in our newly planned specialist communication and sensory homestead 'Willow', we provide specialist support in a community setting that is safe and secure.

**Our future** - A large part of our developmental activities are based on a creative approach that stimulates and enriches the communication and personal living/development targets that we set for ourselves as professionals and our learners and residents as citizens of the local community. Art, performance, drama, music all form essential parts of the WMC experience. Recent additions to our facilities and programmes such as food production and our Arts & Crafts Social Enterprise Centre have added another dimension to our growing association - as has our burgeoning links with local community groups - all adding to the vibrancy of our environment.

### **At the centre of it all are the people we support.**

As the fairly recent appointment my role as Director is to help transform William Morris into a real community (and I mean local community) organisation. The old funding regime that used to supply the old Camp hill model has now disappeared. We are now operating against a backdrop of continuous financial challenge as traditional funding and business dries up (the direct result of legislation introduced in the wake of the banking crisis). To meet this, we have begun to extend the range of what we do, and 'open up'. For us this means more activities meeting more of the needs of 'those we support', it means more staff, better trained with opportunities to develop professionally. It means becoming a key part of Eastington and the local community.

John Nissler



Some of the ECO apple-pressing team taking a break from squashing duty in the new Social Enterprise Centre cafe at William Morris College

## Groups

### **Jolly Joggers - Now recruiting new starters! Absolutely FREE!**

The Jollies are a group of people of all abilities of fitness who meet every Wednesday outside the Co-op in Eastington 7pm pronto! It's a great time to join us as we've got a few new people starting their running journey right now.

We start our programme with the walking/jogging method which will be tailored to suit your individual fitness level and then we will build up to a 5K race in time. No pressure though just come along a give us a whirl...it's better than doing nothing and with no gym fees it could be the kick start you need.



With three groups and three levels of speed you can choose the group that best suits your requirements. As the nights draw in it is reassuring to have others to run with (I personally lead the beginners).

We are a friendly group who are very supportive of each other...we are waiting to welcome you to jollies...just come along with your trainers and comfortable clothing and get ready to feel good and get fit.

You can get in touch with me (Vanessa) 07806 802540/01453 828557 anytime, also we have a lively Facebook page Jolly Joggers which will help you make contact with other running buddies to match your speed and running ability. Turn things around, get in touch and make a start today!

Bye for now  
Vanessa