

## Signpost

### Your news... *your* ECN!

Dear Readers,



Well we are definitely into the 'season of mists and mellow fruitfulness' now. We are surrounded by the bounty of autumn - from the brambles in the hedgerows to the glorious array of produce that was on display at the well attended Autumn Veg and Flower Show. Well done all who entered, winners or not! It has also been heartwarming to see so many of you kindly sharing your harvests by offering your excess fruit and veg to those passing by your gardens - it certainly makes a walk around the village an even more rewarding experience. Thank you.

I think that we may have started another long-running tradition with the advent of the very successful 'Yard Trail' this month. Like the Egg hunt in the spring, it seemed to bring the whole village out, and it is great to see every one coming together to enjoy these communal events. There is no doubt that the Eastington community does these things rather well! For more proof, see the article on the long awaited Skate Jam, the horse show, the continuing success of the new Ladies of Eastington group and the first advertised showing in the new community cinema..... Not forgetting the regular community walks, the upcoming Halloween 'trail' and the ever popular Parish Apple Day - amongst other things!

Thank you to all who took part in our survey last time - details are inside.

We hope you enjoy this edition of your Parish Magazine.

Jan & Tom Low and Mary Gribble

email: [info@ecn.me.uk](mailto:info@ecn.me.uk)

### *Inside this issue...*

#### GROUPS

- 5 Playgroup
- 7 Walkie Talkies
- 9 PROWD
- 18 Teddy Tunes
- 18 Slimming World
- 21 Ladies of Eastington

#### CHURCHES

- 20 Methodist Church
- 22 St Michael and All Angels

#### COMMUNITY

- 4 Eastington Primary School
- 8 Snakey Park
- 14 West of Stonehouse
- 15 Village Agent News
- 19 Ecotricity

#### COUNCILS

- 10 Parish Matters
- 11 District Councillors' letter

#### EVENTS

- 2,3 Autumn Veg & Flower Show
- 6 Eastington Yard Trail
- 9 Eastington Horse Show
- 16 Halloween Walk
- 19 Halloween Horror Film Night

#### HISTORY

- 12,13 War Comes to Eastington

Diary Dates		
<b>Walks</b> Sunday 15 <sup>th</sup> Oct. See page 9 for details	<b>Ladies of Eastington</b> , next meeting 26 <sup>th</sup> Oct at 7.30, Village Hall	<b>Halloween Walk</b> Thurs 26 <sup>th</sup> Oct Meet at the Badger, 6pm
<b>Halloween Horror Film</b> Sat 28 <sup>th</sup> Oct Community Centre, 8pm	<b>Mexican Night</b> 4 <sup>th</sup> Nov at 7:30 Cleeve Cottage	<b>Pamper Evening</b> Friday 17 <sup>th</sup> Nov Eastington Community Centre

**Next deadline for submission: Monday 20th November 2017**

Next Delivery: Weekend of 2nd December, 2017

Articles welcome from all parishioners - email to : [articles@ecn.me.uk](mailto:articles@ecn.me.uk)

*Space is limited - we may have to omit, postpone or shorten articles.  
The views expressed in ECN are not necessarily those of the editors.*

**See it in colour on our website: [www.ecn.me.uk](http://www.ecn.me.uk)**

## Events

### The 35<sup>th</sup> Eastington Autumn Veg & Flower Show

This was very well attended, well up on last year, and with 179 entries in all, it is not surprising that there was plenty to admire.

There seemed to be entries in most of the classes, and plenty of 'Firsts' were awarded.



The overall winner, with both the the 'most points' and the 'best in show' was Mr R Hughes.

He was awarded the President's Cup, the Stroud Building Society Cup and the Bill Fletcher Memorial Trophy.



Runner up in the top categories was Mrs Liz Hughes (no relation!), Who was also awarded The J Bridges Trophy.



The President's Rose bowl, the Perpetual trophy for most points in the cookery section and the C Haines trophy for 'Best Orchid' were all awarded to Queenie Jones - who has worked tirelessly over many years to make this show a success - and who was also in charge of the Tombola amongst other things!



Di Davies was runner up for the President's Rose Bowl



Mr H Smith won the Joan Pariles Trophy and the Village Hall Cup for Allotment prowess



Ms Kim While won the Underwood Trophy for her tomatoes



Mr D Ashby was awarded the trophy for 'Best Runner Beans'.



## Events

There were some charming entries in the Children's sections, and some very talented youngsters about the place!

Otto Hayward was awarded the Bill Fletcher shield for his delightful family of strawberry mice



...and then there were also these delightful creations to admire. Becky Ogle won the Moss trophy for these Shaun the Sheep cakes.



Ms M Hayward (left) won a trophy for her colouring work and Ms Laila Farrugia swept the rest of the board, taking the Neale Trophy, The Parish Council Trophy and the Class 51 trophy for her handiwork



There were, of course many, many other delighted entrants who walked away with a 'First' prize for their produce - including Betty Barnfield, Ed Davies, Gary Dingle, Jacqui Dingle, Alice Elliot, Dale Haines, Liz Haines, Simon Harris, Shaun Ireland, Kate Livingstone, Tom Low, Jo Pegler, Anna Marie Smart, Howard Smith, Helen Whitehead and E Wroe (apologies if I have missed you out!) -

- But the fun is all in the taking part, and keeping this very old Eastington tradition alive.



The afternoon was brought to a close by the President, Lt Cdr W. R. Harris, - to whom, along with the stalwart members of the Jones and Haines families who do so much of the hard work - we say "Thank You for a great show" and "See you in the Spring"!



## School

### Eastington Primary School

Class 3 have been thinking about starting a new academic year. Year 4 children are enjoying being older, responsible members of the class and Year 3 children are excited to have joined Key Stage 2!

Here are some of their thoughts:-

I feel happy and more grown up now I'm in Year 4.  
By Lottie.

I'm enjoying making new friends in the juniors.  
By Alex.

I like learning new topics and challenging myself in Class 3. By Myla.



#### Going for Goals

All the children have decided personal targets that they would like to achieve this year. They have shared them with their talk partners and have promised to encourage each other in achieving them. Here are some of their aims:-

"I want to do well at maths and sentence writing" by Oliver.

"I would like to improve my history and science" by Harrison.

"I'm determined to improve my reading" by Sophie.

"I want to improve my story writing" by Millie.

"I would like to get better at spelling" by Emelia.

"I want to make my handwriting smaller and neater" by Eilan.



"I aim to improve my music skills" by Hero.

"My target is always to be a good friend" by Piers.



We look forward to reviewing everyone's targets by the end of Term 1 and see how all of Class 3 are getting on.



## Playgroup

OFSTED Registration No. 101782

Registered charity No. 1084981

### Welcome Back!



We have had a very busy start to the new school term since September and have been settling into routines and supporting children's transition to playgroup and encouraging independence for the older children.

We started the Autumn term by discussing holidays and have been drawing pictures to reflect events, families and objects, and we

have also been blackberry picking and making pies to eat which proved very popular. Our allotment has grown over the summer and the children have enjoyed picking runner beans, peas and courgettes and have been digging up weeds with the grown-ups ready to try and plant some winter vegetables. A very productive start to the Autumn term!



If you would like more details please contact Mandy Owen, Playleader on 07977 342 742  
email [eastingtonplaygroup@hotmail.com](mailto:eastingtonplaygroup@hotmail.com)  
or visit our website [www.eastingtonplaygroup.wordpress.com](http://www.eastingtonplaygroup.wordpress.com)



**We are organising a  
Pamper Evening  
on Friday 17<sup>th</sup> November  
at the OHMG  
from 6.30pm until 9.30 pm.  
Entry £2.50 to include a glass of fizz!**

**We look forward to being polished and plucked along with having our fortune told.  
Do come along and join us, everyone welcome.  
Appointments will be made on the evening on a 1<sup>st</sup> come basis.**

### Royal British Legion Poppy Appeal 2017



Could you spare some time to help with the street collection in Eastington this year?

Please call Kathryn Gribble on 01453 825279.

It's not a massive commitment, just a couple of hours, please do think about it!



## Events

### Eastington Yard Trail

What a fantastic day the first ever Eastington Yard Trail turned out to be!

*( - and for those of you still wondering, it is simply a village-wide car-boot sale - held in driveways and front gardens - so that you can wander around the village picking up bargains as you go!). Ed.*

Everyone I spoke to throughout the day, whether selling or buying, spoke of what a great day they had had, not just with purchases/sales but also with meeting friends (both old and new) and enjoying the wonderful feeling of the whole village coming together!

Huge thanks go to everyone who made Sunday what it was... Those who had faith and took a punt on signing up to a new event, not knowing whether anyone would come out to buy anything! Those who came out (in force) looking for bargains, without any idea of what would be for sale and what the weather had in store for us! Our two fantastic village pubs (The Kings Head House Hotel and the Old Badger Inn) for being so accommodating of stalls, posters, forms and maps! The Parish Council and the Co-op for displaying posters for us! The Big Red Bus Bar for the loan of tables! Those who used our tables and donated so generously towards Eastington Playgroup! And anyone else I've missed!



A special 'congratulations' goes to Lizzie Mills and her neighbours, who raised a whopping £400+ for Helen & Douglas House, the charity they decided to donate all of their takings to!

It's was a truly fantastic day, and I think we can all look forward to the next one (planned for the Spring) knowing it'll be even bigger and better than round one!

Luke Nicholas Honeychurch



## Groups

### Walkie Talkies

We enjoyed a fabulous walk on Sunday 17th September starting from The Badger. We welcomed our new members and reacquainted ourselves with our regulars members. From the Badger we followed the path behind up to six ways double kissing gates up and onto Cress Green. From there we headed out to Five Acres Grove (or the bluebell wood as we know it). After carefully crossing the railway line we took a right through about 3 lovely fields and found the path which had been cleared nicely and redirected slightly bringing us onto the road facing the George at Frocester.

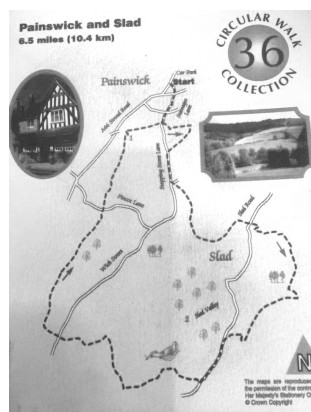


After a well earned pint and the dogs had had a rest and a drink we continued our journey along the road that comes to Frocester Fayre, taking a right into fields following the footpath which sort of scoots around the perimeter for a few miles until eventually coming round the back of Green Farm and joining a footpath to the side of the Kings Head. Guess what...yes another few bevs were enjoyed in brilliant sunshine, thus concluding a truly wonderful walk with unexpectedly mild sunny weather. Thank you everyone that came along.



**The Walkie Talkies is a completely free walking group welcoming everyone from all ages ...and their dogs.**

We meet mostly at The Badger at 1pm every third week in the month with walks in between on an ad hoc basis. We have a lively Facebook page and advertise our walks at The Badger, The Co-op, Butchers and Community Centre. Please just turn up or get in touch if you need further info.



You can contact me anytime 01453 828557/ 07806 802540  
[vanessa@teddytunes.co.uk](mailto:vanessa@teddytunes.co.uk)

**Our next two walks take place simultaneously on Sunday 15th October....**

Bill Edwards (824452) will lead our shorter walk: 1pm at The Badger roughly 2-3 miles / 1 hour ish.

Vanessa (828557) will lead Painswick/Slad walk: 1pm at Stamages Lane car park Painswick. 6.5 miles 3-4 hours. Stopping for a drink at The Falcon in Painswick on the way back. *Please let me know if you need a lift...*

### More Future Walks

**Sunday 19th November** 1pm The Badger (to Cam and Frocester St.Peter's church 5.5 miles 4 hrs...this is a wonderfully interesting walk (going under the M5) cheeky pint at the George/Cam half way round.

**Sunday 17th December** 1pm Rudolf's Ramble details to follow...will be involving alcohol and mince pies defo!

**Sunday 21 January** 1pm at Badger (the detox walk) details to follow...

Love, Vanessa



## Community

### Update from the Friends of Snakey Park

We've had a great summer in the park, it's a real pleasure to see so many people enjoying the space. The new roundabout has proved very popular and provision of the loo has allowed people to stay and play longer.

Our new volunteers have been a great help emptying the bins and carrying out visual inspections, the work load is much less when we can all share a little. So we would like to say **a big thank you** to everyone who has helped care for the space during this busy time.

We still have a few bits ongoing including the provision of some fencing in between the skate ramps and the car park and hopefully a few new little bits for the play space, we will let everyone know when we have more information.

We have also had the official opening of the skate ramps. To mark this we organised a Skate Jam which offered participants a chance to learn new skills on both scooters and skateboards. The event was free and open to all, with refreshments provided by Eastington School PA. The Skate Jam ended up being held over two dates as the first was rained off, but both days were well attended and enjoyed by the participants.

While the children and young people learnt new skills they were able to once again show us all that the young people of Eastington are both brave and resilient. We have a full report below from one of our participants.

*If you would like to get in touch with the Friends of Snakey Park you can find us on Facebook or contact us via the parish council.*

#### What a day we had at the Skate Jam Grand Opening!

My name is Poppy Jones, and before the Skate Jam I could not go down any of the ramps as I was terrified. The skating coach was very supportive and gave me some encouraging advice. Although it started to rain we still had a great scooter session. By the end of the day I was able to go down the ramp and since then I have worked out how to go down another ramp and am so proud of myself.

The second part of the Skate Jam took place on Tuesday 26th September. The instructor showed us how to position our feet on a skate board in order to be able to go down the ramps. We all had fun, even though some of us came away with a few bruises!





## Events & Community

### Eastington Horse Show

Eastington Horse Show took place adjacent to J.13 on Saturday 6th August in challenging conditions. A heavy thunderstorm in the morning necessitated holding the tents down and people diving for cover - but worse was to follow with the closure of the M5 at J.14 and then a further accident on the motorway near the showground. This caused gridlock and mayhem in a large area with many prospective competitors unable to get to the show or enduring a very arduous journey. Furthermore we were without the invaluable services of Jim Pegler, a long time inspiration and help, due to illness. We all wish him a speedy recovery.

Nevertheless, those who made it enjoyed some high quality dressage and very competitive show jumping (this being a qualifier for the Championships at Rectory Farm in September). The children thoroughly enjoyed the Gymkhana, which concluded the afternoon. Many of the show classes were hotly contested, with high quality entries. Barrie's magnificent Shires are always a huge attraction, one judge being seen posing for a photo beside this huge animal. They have been having a great success throughout the West Country this season

This site, on the beautiful old pasture, is superb and we are very grateful to all who kindly allow us to continue to stage the show, which has been running for 87 years, There are many who generously give their time and hard work to put the show on, and very generous sponsors, to allow the village organisations and the Air Ambulance to benefit.

### PROWD

Well, Autumn has well and truly arrived!!..... misty mornings and damp starts, BUT,... lovely Autumn colours appearing on the trees and in the hedgerows,..... another good reason to get out and use our local footpaths!

In order to make it easier to use our footpaths, kissing gates have been installed across our Parish over the last 10 years or so, largely with the support of our Parish Council, but also with private individuals paying for some installations.

PROWD has recently been awarded some money by the Ramblers Association, and I am currently applying for further grants from two local sources. There is obviously always a lot of "coordinating" to be done between Landowners, Suppliers, Contractors, and County Council in order to 'make things happen' !!

A "charity" Bank account has also had to be opened in order to receive donations, and to keep clear records of all monies received, and monies spent.

I am hopeful that PROWD will be successful with its 'local bids' as a lot of careful planning and documentation has been involved in the application process. Any money received will go towards further improvements in our footpath network.

I was contacted recently by Parishioners who were concerned about the footpaths and bridleways in the Nastend area, due to the new housing development. I called in to see the 'on-site' foreman, and he made sure that all paths were clear and open for normal use. On the subject of "open footpaths", if anyone feels that they would like to help to clear paths during the Winter months,..... please contact me, and I can make arrangements for a 'working group' to meet-up.

Just time to mention our TWO walks,.... both on SUNDAY 15th October.

LOCAL Walk : 1300 at the BADGER About one hour. lead by Bill ( 824452 )

PAINSWICK Walk : 1300 at Gamages Lane car park. 3-4 hrs. Lead by Vanessa ( 828557)

Let's all hope for a gentle, quiet and colourful Autumn and some enjoyable walks.

Best wishes, Bill Edwards

## Councils

### Parish Matters

Parishioners of Eastington, if you have hedges around your property that run alongside roads or footpaths they probably need cutting back to allow safe passage. The warmth and rain has meant that many of path/roadside hedges are now very overgrown and causing issues when trying to walk/drive along footpaths/lanes within the village. The long strands of brambles particularly catch pedestrians unawares and it hurts to get one of those in the face. Please can you all assist in continuing to help our parish be a place of beauty and safety. Many thanks.



The flowers will soon be updated with winter pansies and daffodils for the spring. We're fortunate that we have a few volunteers that will water the flowers in dry periods, but more volunteers welcome especially on Bath Road and Claypits Road.

Anyone that would like to get involved with watering / planting / donating bulbs or plants, please do get in touch with the Parish Clerk.

While we're on the subject of the parish being a place of beauty and safety, many of you will be pleased to see our village gateways have been installed.

Sadly, it took a long time for Highways to install the signs so the flowers for the gateways are past their best.



New bus shelters are to be installed in October thanks to a grant through County Councillor Williams using her Local Highways budget to part-fund the replacement. The concrete shelter on Spring Hill and the shelter on Alkerton Road will be replaced.

We're also having a new litter bin installed outside the Co-op. The new bin will have a section for cans and plastic bottles so please do help with recycling our waste. Expected installation is w/c 16<sup>th</sup> October. The old bin will be relocated to Spring Hill and used at the entrance to the community orchard.

There is a vacancy on the Parish Council for a councillor if anyone is interested. We meet once a month for 2 hours to make decisions for the parish, and the rest of the month you can be as involved in our projects and activities as you wish. Anyone over the age of 18 and living within 3 miles of the parish can apply; we would particularly like someone with knowledge of the planning system but other skills also useful. Please contact the Parish Clerk for more details.

**Julie Shirley, [clerk@eastington-pc.gov.uk](mailto:clerk@eastington-pc.gov.uk), 01453 799616**



**Update:** Gateway planters are now ready for winter, pansies and bulbs all planted - thank you to the volunteers for all the help



## Councils

### District councillor news

As I write this it is clear that the nights are drawing in and the temperature is dropping. For a District Councillor this means going out to Parish Council meetings in the dark rather than those distant Summer Evenings. The other thing about this time of the year is that the amount of activity increases after a slight lull in the Summer. In Eastington with the many planning challenges, it was only a slight lull.

So let's start with planning.

Over the summer we have seen work start on the road infrastructure for West of Stonehouse, which brings it home the scale of this development. We have also seen a new and improved application from Redrow for the first phase and I am afraid that it still lacks adequate details on the buffer zone although I understand there have been some discussions on this and some progress is being made. The new application has some improvement in the design of the houses but SDC have not yet commented whether the improvement is enough or not. We will continue to work with the Developers and Planners to make sure that the detail work is done to achieve the best possible outcome.

On the Ecotricity application, Highways England, who are responsible for the Motorway Junction have asked for more time to decide and more information as have Gloucester County Council Highways. It now looks as this application will not be decided on until after Christmas but I personally think it is still important to work to challenge the view that this is somehow inevitable, it isn't and I would encourage you to make your view known on this application to Stroud District Council at [www.stroud.gov.uk/environment/planning-and-building-control/planning-applications](http://www.stroud.gov.uk/environment/planning-and-building-control/planning-applications) - search for application ref: S.16/0043/OUT

Finally on planning, the review process for the Stroud District Local Plan will start soon and I would encourage you to have your say as this looks at developments after 2031.

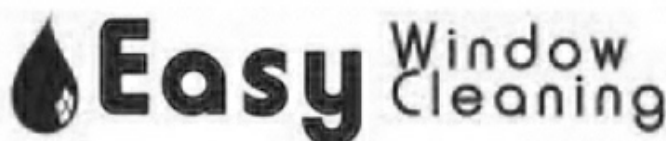
In other matters Stroud District Council have announced that they will be looking to reduce staff by 5% hopefully through natural wastage. With the use of technology to help people access the Council's services this may be possible but I am concerned that the current administration plan to spend £8m of the Council's Reserves on Social Housing which may only buy 34 additional properties and think we should keep our reserves to protect services.

You may also have seen that the Subscription rooms are being tendered for sale and negotiations with bidders are ongoing. It has highlighted some interesting numbers on the overhead that the Subscription Rooms have to pay to Stroud District Council. A decision on this will probably be made in December.

If you have any questions for your local District Councillor please contact

Stephen Davies at [cllr.stephen.davies@stroud.gov.uk](mailto:cllr.stephen.davies@stroud.gov.uk) or on 07802 595 307

John Jones at [cllr.john.jones@stroud.gov.uk](mailto:cllr.john.jones@stroud.gov.uk) or on 07808 922 918.



Domestic and Commercial Window Cleaning

Driveway Cleaning

Wheelie Bin Cleaning



Call **01453 821853 / 07999 234002**

Email: [info@easywindowcleaning.co.uk](mailto:info@easywindowcleaning.co.uk)

## History

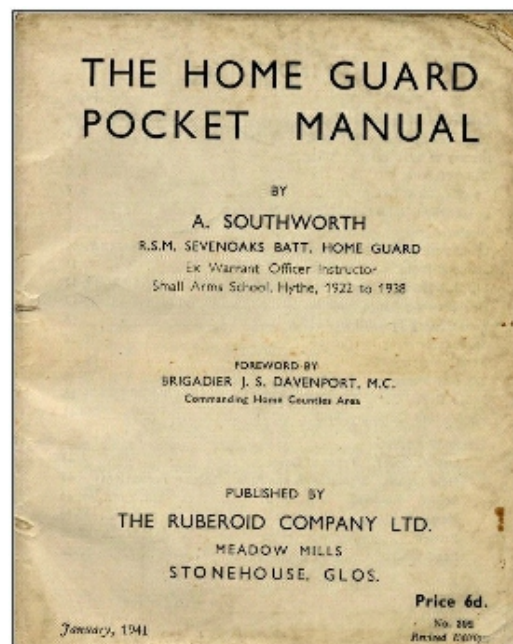
### War comes to Eastington

Stephen Mills

It seems that throughout history, men have left their homes and marched off to fight in wars in some distant land. For centuries, towns and villages remained largely untouched by these foreign conflicts, and by and large, the people left at home carried on as normal. Sometimes men failed to return, but despite this, the life of the village continued as it had done so for centuries. The lives of villagers were rarely directly touched by battles far away, with many having only the vaguest idea of where countries were, encounters that took place, or even the reasons behind the conflict. However, with the 20<sup>th</sup> century came world wars, and particularly during WW2, with the arrival of attack from the air, everywhere was now at risk.

Air raids became a real threat and it was not uncommon to see or hear German bombers heading towards Bristol to attack its aircraft factories. These included the Bristol Aeroplane Company's huge plants at Filton and Patchway (at one time, the largest aircraft production facility in the world), with smaller factories of Aero Engines Ltd in Kingswood, and Parnall Aircraft in Yate. An old Eastington resident remembered as a child, being wrapped in a blanket and taken into the garden at night to witness the baleful glow visible in the night sky over Bristol. Realistically, Eastington wasn't that far so the fact that the village escaped largely unscathed was a blessing. But the German air force knew exactly where we were and what was located in the surrounding area. Aerial photographs found after the war clearly show our part of the world, particularly the Hoffmans ball bearing factory on the outskirts of Stonehouse and the Sperry Gyroscope works nearby at Bonds Mill. Both were producing vital components needed for the war effort. Fortunately, German activities were directed elsewhere, so the planned air raids never took place, but things could have been very different.

Ironically, there were several companies that relocated to Eastington in order to escape the threat of bombing. Probably the biggest was the Ruberoid Company that moved part of its manufacturing operations from Enfield into Meadow Mill some time before 1939. The company produced a wide range of building and roofing materials and during the war, developed bituminised hessian-based sheet material used to create temporary jungle airstrips. But nearer to home, their products were equally important for the upkeep of houses, farms and factories across the nation. Like most major employers in the area, they created their own section of the home guard. Sperry's also relocated from Brentford to Bonds Mill to avoid possible air attacks, and Hoffman's moved part of their operations from Chelmsford for the same reason.





## History

Then there was the risk of invasion by land. To counter this, pill boxes were quickly erected at strategic points along local roads, the Stroudwater Canal and rivers. Many still remain, often lost in the undergrowth. For example, one lurks in the bushes by the river at the foot of Spring Hill. Despite these valiant efforts, it's hard to imagine that they would have done much to hold the German army back for long. There were also other facilities built. At Cress Green, the remains of an unobtrusive brick building lie largely hidden in the hedgerow. This was one of a number built to house troops operating either searchlights or anti-aircraft guns that were dotted around the area to provide cover for the Hoffmans and Sperry plants, as well as for the Admiralty who also had a base in Stanley Mill at Ryeford. A searchlight was located at Cress Green, although at one point, it seems a Bofors anti-aircraft gun was also located there. At other times, particularly in the late Spring of 1944, village children raced to the A38 at Claypits to watch long convoys of American vehicles and troops rumbling southwards in readiness for the D-Day landings.

So, despite the fact that we were perilously close to Bristol, Eastington dodged the worst of the raids. However, that's not to say that we escaped entirely as there were several occasions where air raids took place in the area or lone German bombers dumped their bombs en route home. A few landed in Eastington although as was usual at the time, newspaper reports omitted the name in case it inadvertently provided the Germans with useful information. On one occasion, a bomb hit Blunder Lock on the Stroudwater Canal, damaging the lock gates and blocking the canal. This may have happened at the same time that bombs were dropped elsewhere in the area. Reports noted that at around 3.30 am, a number of high explosive bombs were dropped around Coates, Ready Token and Eastington. No-one was hurt and the only damage occurred in Eastington where 'electricity and telephone cables were severed and damage was done to a number of houses'.

A local newspaper dated 20 August 1940 reported the following

### ***Casualty One Goose – Slightly Injured***

*On Tuesday morning an enemy aeroplane dropped 13 bombs on the outskirts of a south-west village (ed. - at 3.15 am in Eastington). Most of the bombs dropped in open fields or gardens, but one, which landed in a brook (ed. - thought to be near Millend), caused considerable damage to the windows and roofs of nearby cottages. Fortunately, there were no persons injured, the only casualty being one goose, which has a slight wound in the neck.*

*Several bombs fell near to the village church. A resident's garden was one of the targets struck, and a number of tomato plants, the fruit of which were almost ready to be picked, were destroyed. A field in which a bomb landed had been used until the day before the raid for turning out cattle, but these animals has been moved and the field was empty.*

*A 63 years-old man, his wife and daughter all had very narrow escapes from injury when a bomb exploded near to their cottage and blew in the windows and damaged tiles on the roof. In an interview he told our reporter that he was sleeping in one bedroom and his wife and daughter in the other. The women were asleep when the plane went over, but he heard it. He remained in bed until a terrific explosion occurred. The window of his room was blown in, scattering glass all over his bed and the floor, but he was unscathed.*

*His wife and daughter had a similar experience in their bedroom, but apart from shock of the occurrence, neither of them was injured. They got up, lit a fire and had a cup of tea, and then started to clean up the mess. Most of the windows in the cottage and the adjoining one were badly damaged, tiles were blown off the roofs, and the back door was burst off its hinges, although it had been locked by means of a very strong bolt.*

*A woman who lives next door sustained severe shock, but otherwise, escaped injury. Other houses in the neighbourhood were also damaged, window panes being cracked and smashed and tiles being dislodged.*

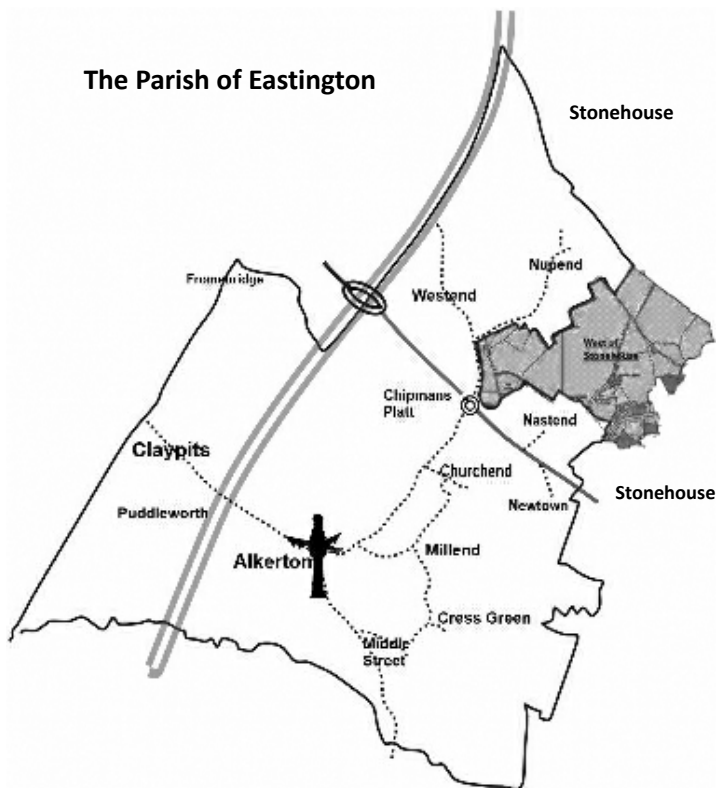
## Community

### West of Stonehouse Development

Most of you will have seen that this has started, as the fields around Westend are being ripped up to make way for the new 'spine' road into the new estate and for the huge drainage attenuation ponds that such a dense building plan makes necessary. We understand that houses must be built as people need homes, but we grieve for our green fields and our rural character none-the-less.

In the development MasterPlan (based on the Local and Neighbourhood Plans) we were, at least, promised that there would be 'Structural Landscape Buffers' to separate and protect the integrity of our hamlets Westend and Nupend. The detailed plans submitted by Redrow have consistently ignored this, and have shown building right up to existing residents' gardens. As a result of serious and justified protests from the Parish Council and many individuals, Redrow have now submitted new plans which only address part of the site, leaving the question of the buffer zones for later consideration (possibly even with a different builder). We cautiously take this as a good sign.

The presence of the huge construction machinery begins to bring home the sheer scale of this development compared to the existing surroundings. It is starting to sink in that this will not just be the gentle addition to the Parish and village that previous developments, like Swallowcroft, have been, but will completely dwarf the existing 'Eastington'.



There are currently around 750 houses in the whole Parish of Eastington - which includes the village of Alkerton and the all surrounding hamlets - as we have always illustrated on the front cover of ECN. The new development, in just one small part of the Parish will contain approx. 1,350 houses. This will therefore be like a new village/town twice as big as the existing village, and very different in character.

If we accommodate the new buildings within the existing local government administrative set-up, the Parish Council would need to grow to be a committee of at least 19 members, and their priorities would, naturally enough, lie with the majority of the population - i.e. in the new development.

In order to retain the meaning of the word 'Eastington' as we know it, and to preserve the community spirit and administrative scale that we are used to, the Parish Council will be considering supporting the idea of

the new estates becoming part of Stonehouse (with which they will be much more closely aligned) rather than of 'Eastington'. The new development is actually described as 'an urban extension to Stonehouse' in the Local Plan. ECN applauds this idea, and would hope that the 'buffer zones', yet to be determined, could form a part of a new Parish boundary.

If the Parish Council adopts the idea, then there will be a public consultation.

Jan Low



## Community

### Village Agent News

This month I need to tell you all about some changes that are going to happen soon. The Village and Community Agent scheme is combining with Social Prescribing to become a new service called "**Community Connectors**".

Village Agents have been working across the county for 11 years and have helped thousands of older people and communities gain better access to services and information as well as providing support and assistance to those who need it most. Over the past 4 years, Social Prescribing has offered GP practices and other health care professionals a mechanism for referring patients who are in need of alternatives to prescribed medicines. The schemes have evolved tremendously over the years, building up networks of referral partners and gaining vital knowledge about the areas in which they work.

**Community Connectors** will be accessible in each district of Gloucestershire with 5 providers delivering the new service. The contracts for Community Connectors will begin of 1st October. Until then, existing Village Agents like myself will continue to take referrals and visit clients. We are in a period of change, but have been assured that over the coming months things will evolve into the new service in as smooth a way as possible. I will soon be in a position to publish the relevant contact details so that readers will be able to get in touch with the new providers direct.

I also have some information about the **Cotswold Vale Talking Newspaper**. If you would like to receive your local newspaper in audio form or if you, a friend or family member are visually impaired and unable to read the newspaper, then this service will be of interest to you. The Cotswold Vale Talking Newspaper is a group of volunteers based in Dursley, Berkeley and Wotton. At their studio in Kingshill House they record the Gazette together with other publications onto memory sticks every week and post them, free of charge, to visually impaired people throughout the area. New listeners are given a free sound box if needed, which is very easy to use and there is plenty of help to get people started.

Visit their website [www.cvtn.org.uk](http://www.cvtn.org.uk) to find out more, and click on "Listen to the news" to hear this week's edition. If you would like to know more about the Cotswold Vale Talking Newspaper please call Kingshill House on 01453 549133 or Mary Moss on 01453 860801.

**Penny French. Tel: 07776 245 726. Email: [pennyf@villageagent.grcc.org](mailto:pennyf@villageagent.grcc.org)**



Supporting families in  
Stroud District



Home-Start Stroud District is a local charity which supports parents who are going through challenging times. Being a parent, whatever your situation, can be very difficult, especially when children are young, if you have little support from friends and family or if you are also having to cope with issues such as post-natal depression or disabilities.

That's when parents need support. That's when Home-Start Stroud can help.

Home-Start recruits and trains local volunteers. A carefully selected volunteer, who has parenting experience themselves, regularly visits a family, in their own home, offering emotional and practical support for as long as it is needed. This friendly parent-to-parent support is a simple yet effective way of enabling families to get back on track.

If you need help, or would like to train to be a volunteer, please contact us on 01453 297470

Visit our website at [homestartsd.org](http://homestartsd.org) or find us on Facebook: Home-Start Stroud District



Annexe 3, The Wheelhouse, Bond's Mill Estate, Stonehouse, Glos. GL10 3RF

## Events



On **Thursday 26th of October** we will once again be running the Halloween Walk.

For those who haven't previously joined us this is a fun filled event that combines trick or treating with a walk around the village.

We will be meeting at the Badger at 6pm, then follow a route around the village, trick or treating as we go. All the children (and many of the adults) wear brilliant costumes and have great fun along the way.

We only call at prearranged houses so we know we will be welcomed with sweets and in some cases very spooky decorations!

We feel this is a nice way to get children together to experience trick or treating without bothering any residents who would prefer to be left alone.

Last year we were amazed by the number of terrifyingly dressed little witches, skeletons, zombies, vampires and other monsters who came along, we think we had about 40-50 in total!



We would always like more houses to call on so if you live on Millend Lane (before the mill), Cress Green or Middle Street we would love to hear from you. Email [jen.empson@gmail.com](mailto:jen.empson@gmail.com) or [lizzerchance@gmail.com](mailto:lizzerchance@gmail.com) address, alternatively contact us via facebook.



07817 625080 | [gillrodway@thenailbox.me.uk](mailto:gillrodway@thenailbox.me.uk) | 4, Bradestones Way, Eastington, Stonehouse, GL10 3FD  
01453 821725

**CND Shellac & Nail Art**  
including the latest trend...  
*Mirror Chrome, Glitter & Foils*



**CND SHELLAC**  
Including cut, shape & cuticle remove £20.00  
French £25.00

**NAIL ART**  
• Glitters • Foils • Swarovski Crystals • Artwork  
from 50p per nail



FULLY INSURED

**Gift Vouchers Available | Easy & Free Parking**



[www.thenailbox.me.uk](http://www.thenailbox.me.uk)



## Events



### 7<sup>th</sup> Parish Apple Day 21<sup>st</sup> October 2017

From noon in the Community Centre grounds

Come along and join in ( or just watch!) as eco members - and anybody else that would like to help - seek and scrump and wash and smash and press and pasteurise and bottle the great harvest of apple and pear juice that is just sitting out there waiting for us!

Bring your own apples or pears to add to the mix, and earn or buy fresh, golden, delicious juice!



### Eastington Phone box



It is really good to see so many of you enjoying the phone box book-swap library - and a big thank you to everyone for helping to keep it tidy and well stocked.

(Please don't overstock it, though - if there is no room for your contribution, then please wait or take something older out!)

The children's books have been especially appreciated.

We have made it a little website at [eastingtonphonebox.uk](http://eastingtonphonebox.uk) and it has it's own email address: [eastingtonphonebox@gmail.com](mailto:eastingtonphonebox@gmail.com)

If you spot any problems, please get in touch!

## Groups

### Teddytunes

Come on down to Teddytunes and have a good old sing song with Vanessa and her guitar! No need to book just turn up. It's a whole mornings entertainment full of fun, frolics and fabulous homemade cakes! See what my gorgeous parents have to say about it...

*Rachel Marks-Jones* "This is such a fantastic group. We absolutely love it! Vanessa is brilliant - so enthusiastic and fun. The children love her. There is lots of variety - instruments, dancing, parachute, bubbles and some great new songs I haven't heard at other groups. Vanessa seems to be able to bring out the best in adults and children alike so that everyone gets involved and has a wonderful time."

*Abigail Howells* "Teddytunes is a really lovely interactive singing group. I have taken all three of my children over the past six years. Vanessa leads the singing while playing the guitar, provides a great array of percussion instruments for the children to try...and the fun is always followed by fresh fruit and cake...time for a chat too. Perfect!"



Thursday 10-11.30 Frampton Village Hall £6 for adult and child. £1 extra for any additional adults or children.

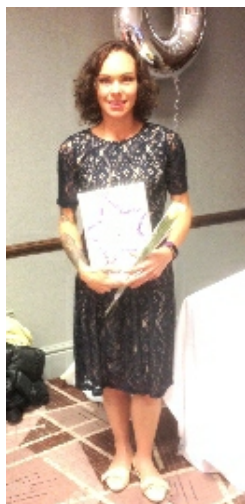
A warm welcome awaits!

Please don't hesitate to contact me any time. Have a look at our lively Facebook page for cake recipes, photos and comments. **01453 828557/ 07806 802540**

[www.teddytunes.co.uk](http://www.teddytunes.co.uk)



### Eastington and Stonehouse Slimming World Groups



This year has been the most amazingly successful year for our lovely members at groups. So in the last edition I let you know that Marc had attended the national semi finals for man of the year competition getting through to the final 40 out of 50,000 with his 11stones weight loss.

Well in this edition I'd like to share with you the fantastic success of Giulia who has lost 8 stones 9.5 lbs in 35 weeks. Giulia loves the healthy free foods you can fill up on and the fact that you never need to be hungry while you lose weight. She also embraced Body Magic and loves her exercise, walking and kettle bells are some of her favourites. All her achievements were celebrated when she was voted **Eastington's Women of the Year** and was then invited to attend the regional finals of the National Women of the Year competition. Within the region we have 50,000 women and Giulia was one of 40 finalists. It was such an amazing day. Congratulations Giulia, your weight loss and the changes you have made inspire us all weekly.

So what else has been happening at groups? Weight loss achievements have continued to be celebrated and new members welcomed to group to begin their own weight loss journeys. As the autumn is fast upon us we've been sharing lots of winter warmer recipes to keep us feeling full and satisfied while still losing weight. Some gorgeous soups, stews and casseroles included Pulled Pork, baked vegetarian cannelloni, Thai green Chicken Curry and Beef Goulash. Delicious!

So if you would like to lose weight come along and join our lovely friendly groups. We meet in Stonehouse Community Centre on Wednesdays at 9.30am or at Eastington Village Hall Wednesday's at 5pm or 7pm.

**Lorna x 07974 937830**



## Community

### Ecotricity

#### Survey Results

Thanks you to the 121 people who took time to participate in the ECN survey, which asked for residents' views on the Ecotricity football stadium and business park planning application.

There were a total of 111 objectors, 89 of whom requested their views be sent on to Stroud DC, which we have done. There were a total of 10 support statements, only 3 of which gave Eastington addresses.

Most of the objectors gave multiple reasons, broadly falling into the following categories:

Traffic ( included in over 80% of the total responses)

Detriment to our rural character and way of life (42%)

Defying the local plan (34%)

No benefit to the area (33%)

Ecological destruction (40%)

Noise and light pollution (33%)

Detriment to William Morris (24%)

Other reasons given included the fact that the development was too big for the surrounding infrastructure, that it would be a blot on the AONB landscape and that it would be detrimental to Stroud town centre. Also mentioned was the security concern associated with up to 5000 'strangers' regularly descending upon the (unpoliced) village.

It was clear that, from this sample, Eastington is almost wholly against all aspects of these proposals, and ECN will, therefore, endeavour to represent this view.



#### Update

It is being reported that Dale Vince is planning to submit a new application, omitting the business park and locating the football stadium on the north side of the A419. This may sound like an improvement but we believe that it is a cynical manoeuvre. The Stadium alone, next to the existing WoS developments, will be much harder to defend against, and if this is granted (**still** on land not in the Local Development Plan) who knows where it might lead a little later on. We urge you all to watch for this new application, and to re-submit your objections to SDC, since if it is classified as a 'new' application, the previous comments and objections are NOT automatically carried forward.

We will put details on the ECN website as soon as they are available.

# HALLOWEEN HORROR FILM NIGHT

Sat 28th Oct  
8:00pm

Full Bar  
Over 15's only  
£4

Eastington Community Centre

## Little Luxuries Beauty

Offering a range of treatments  
from a private beauty room in Eastington.

Treatments include:-

- ❖ Gel Polish
- ❖ Jamberry Nail Wrap Application
- ❖ Manicure & Pedicures
- ❖ Lash Lifting & Tinting
- ❖ Waxing
- ❖ Advanced waxing
- ❖ Massage

I am fully insured and qualified  
with over 11 Years experience in the beauty industry.

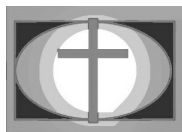
Please contact Liane on **07896 889259**

Evening Appointments only Tues, Weds & Thurs 6-10pm

[www.facebook.com/littleluxuriesbeautyroom](https://www.facebook.com/littleluxuriesbeautyroom)

13 Swallowcroft, Eastington, GL10 3BH

## Church



### Eastington Methodist Church

In addition to our normal services and activities, we have a number of special events coming up including a Harvest Café Church with a guest speaker from Compassion and a Messy Autumn Half Term event (see below). We have now finished the Life Explored course so our Tuesday evening Bible study house group has resumed at The Pike Lock House but starting at 7:30pm instead of 8:00pm. This should enable an earlier finish which we hope will help some attendees.

### CAFÉ HARVEST

**Hear about the work of Compassion which organises sponsoring Children in the Third World**

**11am Sunday 8<sup>th</sup> October**  
with free cakes and drinks and followed by a Fellowship Buffet Lunch

At Eastington Methodist Church GL10 3AA  
[www.EastingtonMethodists.org.uk](http://www.EastingtonMethodists.org.uk)

### Messy Autumn Half Term

Family Craft Activities

Cakes Drinks

**COOKING**

A free invitation to join us on **Wednesday 25th October 10:00 – 11:30am @ EMC**

### Advance Notice – Carols at the Café 11am on Sunday 10<sup>th</sup> December at 11am

Eastington Methodist Church Activities	
Baby & Toddlers Group	Mondays 10 – 11:30am
Prayer Meeting	Tuesdays 8:15 – 9:00am
Lunchtime Bible Study	Tuesdays 1:00 – 2:30pm
Bible Study House Group	Tuesdays – 7:30pm (at The Pike Lock House GL10 3RT)
Prayer Meeting	Fridays 8:30 – 9:00am
Youth Club (11-18)	Fridays 7:00 – 9:00pm
Main Service (separate activities for children/young people available)	Sundays 11am (Café Church – Oct 8th & Nov 12th)
<i>All held at EMC which is opposite the butchers in Eastington, unless stated otherwise</i>	

### Youth Club News

Every two years the Bristol District of the Methodist Church organises a youth weekend. This draws together young people from church based youth groups from quite a wide area for two nights away and a series of fun activities and visits followed by a church service on the Sunday morning. This is taking place on October 13<sup>th</sup> - 15<sup>th</sup> based at Nailsea and a group of us are going from Eastington.

The youth club continues to meet on Friday evenings at 7pm. Although it has not been a particularly sunny summer, it has been a fairly dry one so the young people have enjoyed trips to the OHMG to use the exiting and new facilities there for part of the evening. The evenings are now dark so we have issued a questionnaire to find out what primarily indoors activities the young people would like us to arrange over the coming months. New faces are welcome.

.....Contd/



## Church and Groups

### Eastington Methodist Church Youth Club Contd...



Over the summer we had a couple of really good days out. One was a waterfall walk in South Wales but to a different location to previous years. This one offered the opportunity to go swimming in (very cold) pools in the river as well as



seeing some very beautiful waterfalls.

The second trip was to Rest Bay near Porthcawl on a day when the weather forecast was cool, grey and wet (which it was in Eastington). However, we were blessed with wall to wall sunshine and had a great time.

Ken Burgin – Senior Steward

### Ladies of Eastington



What a wonderful evening we had on the 28th September when one of our very own ladies, Lynne Jessett, offered to give us a floristry demonstration and 'make and take' session. The creations that went home were all individual and beautiful thanks to Lynne and her guidance! A thoroughly enjoyable evening!

Future dates for your diary:-

26th October 7.30pm meeting at the Village Hall

18th November 10am-2pm Xmas Fayre (tables going on sale soon)

14th December 7.30 - ?! Xmas drinks at The Old Badger

**New members always welcome, just turn up!**

## Church

# St Michael and All Angels Eastington Christmas Celebrations 2017



Friday 1st to Sunday 3rd December: Christmas Tree Festival

Sunday 17th December: Carol Service 3 pm

Christmas Eve Sunday 24th December:

Christingle Service 6pm

Midnight Mass 11.30pm



## CHRISTMAS TREE FESTIVAL 2017

Another call for businesses/ children/ families / clubs/ organisations to put their thinking caps on to come up with some ideas for decorating a tree for this year's Christmas Tree Festival !!

It will be over the **weekend of 1<sup>st</sup> – 3<sup>rd</sup> December 2017.**

Prizes will be given to the tree with the most votes  
and for the best child's tree.



We have already had lots apply so come on don't be shy - the more the merrier to make it a fantastic event for all the village!

Refreshments will also be served over the viewing weekend.



A Voluntary Society of The Church of England and The Church in Wales

## Christingle Service

**At 6pm  
On Christmas Eve**



We would love to see you and your family at this special candlelit nativity service - it's a lovely way to start the Christmas festival.

Lasting for about 40 minutes, the service raises money for the Children's Society, a national charity who uses the money to help disadvantaged children.

The service is suitable for all ages, and each child who brings a collecting candle will be given a Christingle - an orange decorated with sweets and a lighted candle. Call in at the Church from December to get a collecting candle.



## Church

### Services in the 'Cotswold Edge' Parishes – October 2017 – 12/09/17

<b>Sundays →</b>	<u>1<sup>st</sup> Oct</u> <u>Trinity 16 Proper 21</u> <u>(p317)</u> <u>Ezekiel 18:1-4,25-31 or</u> <u>Philippians 2:1-13</u> <u>and Matthew 21:23-32</u>	<u>8<sup>th</sup> Oct</u> <u>Trinity 17 Proper 22</u> <u>(p323)</u> <u>Isaiah 5:1-7 or Philippians</u> <u>3:4b-14</u> <u>and</u> <u>Matthew 21:33-46</u>	<u>15<sup>th</sup> Oct</u> <u>Trinity 18 Proper 23</u> <u>(p330)</u> <u>Isaiah 25:1-9 or</u> <u>Philippians 4:1-9</u> <u>and</u> <u>Matthew 22:1-14</u>	<u>22<sup>nd</sup> Oct</u> <u>Trinity 19 Proper 24</u> <u>(p335)</u> <u>Isaiah 45:1-7 or</u> <u>Thessalonians 1:1-10</u> <u>And</u> <u>Matthew 22:15-22</u>	<u>29<sup>th</sup> Oct</u> <u>Trinity 20 Proper 25</u> <u>(p340)</u> <u>Leviticus 19:1-2,15-18 or</u> <u>Thessalonians 2:1-8</u> <u>And</u> <u>Matthew 22:34-46</u>
<b>Eastington</b>	<b>10.45am</b> Holy Communion Michael Bennett	<b>10.45am</b> Holy Communion Alan Gage	<b>6.00pm</b> Sung Evensong Lay Led	<b>10.45am</b> Holy Communion Steve Harrison	<b>NO SERVICE</b>
<b>Frocester</b>	<b>No Service</b>	<b>9.15am</b> Morning Worship Lay Led	<b>No Service</b>	<b>9.15am</b> Holy Communion Hugh Broad	
<b>Haresfield</b>	<b>9.15am</b> Morning Worship Lay Led	<b>9.15am</b> Holy Communion Michael Bennett	<b>No Service</b>	<b>6pm</b> Holy Communion Steve Harrison	
<b>Moreton Valence</b>	<b>9.00am</b> Holy Communion Laurie Smith	<b>6.00pm</b> <b>Harvest</b> Lay Led	<b>10.00am</b> <b>Benefice Service</b> Holy Communion Peter Newing	<b>9.00am</b> Morning Worship Lay Led	
<b>Standish</b>	<b>Fri 29<sup>th</sup> Sept 10.00am</b> BCP Communion  <b>1<sup>st</sup> Oct 11.00am</b> Holy Communion Peter Newing	<b>Wed 4<sup>th</sup> 11.00am</b> Communion at M'tn Hill <b>Fri 6<sup>th</sup> 10.00am</b> BCP Communion <b>Sun 8<sup>th</sup> 11.00am</b> Morning Prayer Lay Led	<b>Fri 12<sup>th</sup> 10.00am</b> BCP Communion	<b>Fri 20<sup>th</sup> 10.00am</b> BCP Communion  <b>Sun 22<sup>nd</sup> 3pm</b> Evensong (Said) Lay Led	<b>10.00am</b> Benefice Service Lay Led 1549/59 Prayer Book
<b>Whitminster</b>	<b>No Service</b>	<b>6.00pm</b> <b>Harvest</b> Lay Led	<b>No Service</b>	<b>11.00am</b> Holy Communion Angela Reeder + Baptism	

### November

<b>Eastington</b>	<b>5<sup>th</sup> November 10.45</b> Lay Led	<b>12<sup>th</sup> November 10.45</b> Remembrance Holy Communion David Humphries	<b>19<sup>th</sup> November 6.00pm</b> All Souls Service Michael Bennett	<b>26<sup>th</sup> November 10.45</b> Holy communion David Humphries
-------------------	---	--	--	--

## Mexican Night

(Sombreros optional)



**At Cleeve Cottage  
Millend Eastington**

**Saturday 4<sup>th</sup> November at 7.30 pm**

**Tickets £10.00 per head which includes Mexican food plus a beer or glass of wine. (Dietary options available but please let us know in advance)**

**Entrance by Ticket only available from:**

**Jacky and Mike Naylor 01453 828682**

**All proceeds to St Michael and All Angels Church Funds**

## Advertise your business

new packaging...  
same great taste!



bottle green  
www.bottlegreen.co.uk



**Advertise your business to every  
home in the parish!**

**From £12**

**Email: [advertising@ecn.me.uk](mailto:advertising@ecn.me.uk)**

**for details**

**IP LEEPER PROSSER  
SOLICITORS**

30 BATH ROAD, STONEHOUSE,  
GLOUCESTERSHIRE, GL10 2JA

Telephone Number: **01453 791461**

E-mail:

[enquiries@leeperprosser.co.uk](mailto:enquiries@leeperprosser.co.uk)

Residential Conveyancing  
Commercial Property  
Wills

Probate

Trusts and Inheritance Tax

Powers of Attorney

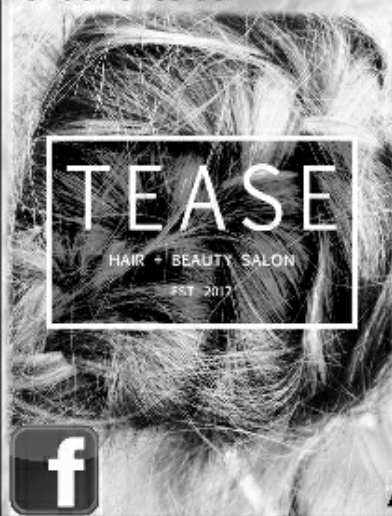
Civil Litigation and

Advocacy Services

Opening Times: Monday - Friday 9am to 5pm

### Hair and Beauty House Eastington

re-launches as



### Ladies and Gents Hairdressing

using L'Oréal quality products

Tues-Fri: 9-5pm and Sat 9-1pm

late night to be determined

BEAUTY ROOM available for rent

Special opening offers!  
call

**01453 791251**

**An out of town salon experience**