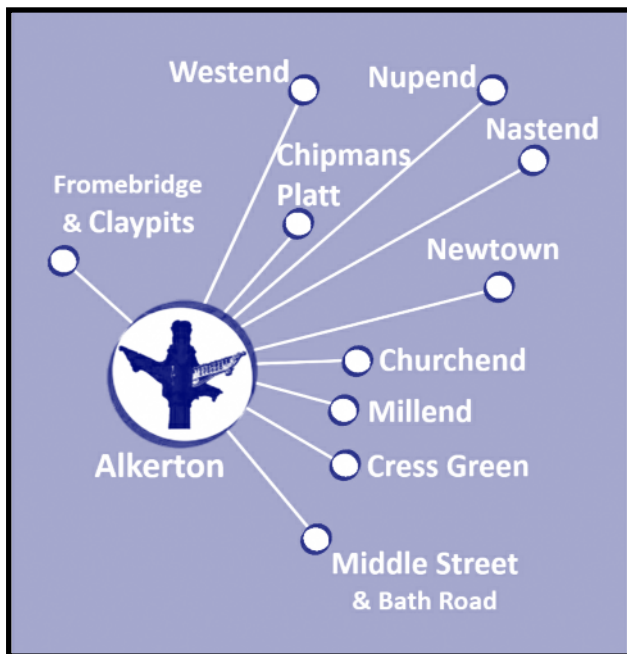




<https://ecn.eastington.website>

Oct / Nov 2021



Phillip Orion



Derek Greenaway



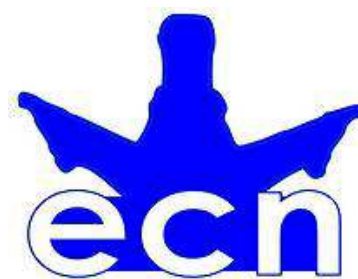
Ian Lewis



Signpost

Your news... your ECN!

Written by You, Produced by Tom & Jan Low and Mary Gribble.



Hello Readers,

Welcome to your Autumn edition of ECN - writing that makes me wonder just where the summer went - but at least we are still blessed with some sunshine.

Harvest time is always an active time in Eastington, and this year we have been able to get back to celebrating the autumn bounty as a community once more. The Autumn Flower and Veg Show in the Village hall was a great success with plenty of green-fingered parishioners in evidence. Congratulations to all those winning prizes - and also to those who did not as the judges were very impressed with the overall standard of all the entries.

Next up we celebrate Apple Day, with the Eastington Community Orchard Group on Saturday the 2nd. Do come along to the Badger - or If you are reading this after the 2nd, as most of you will be, I hope that you joined in, had a good time and are enjoying your apple juice! Juice will be available at the Farm Shop soon.

Perhaps this is a good time to ask you to remember others who may be less fortunate than ourselves, and to support the Stroud Food Bank. There is a basket permanently just inside the Church where you can donate (non-perishable) food and other essentials. This will be delivered to the bank on a regular basis. A simple gift of a few days-worth of supplies can make a big difference to a struggling family. Thank you.

We hope you are all keeping well and safe.

Jan, Tom and Mary.

Inside this issue...

GROUPS

- 3 Playgroup
- 4 Craft Group
- 8 Wild Hog Rescue
- 8 Blue Frog Theatre Company
- 9 Cricket Club
- 12 Severn Vale Rotary

COMMUNITY

- 2 Primary School
- 5 Buses
- 6 Community Centre
- 10 Flower and Veg Show
- 13 Fireworks
- 15 Wombles

EVENTS

- 4 Apple Day
- 9 Fire Walk

CHURCHES

- 16 Methodist Church
- 18 St Michael and All Angels

Diary Dates

Apple Day, October 2nd, Old Badger - see page 4

Wombling - litter pick October 10th, 10am meet at the Kings Head - see page 15

Firewalk, November 20th, Kingsway - see page 9

Deadline for next issue : Thursday 25th November (For delivery around 1st December 2021)

Please email your articles, stories, photos and events to articles@eastington.website
or, for ads please use advertising@eastington.website

Space is limited - we may omit. edit or shorten articles. Views expressed in ECN are not necessarily those of the editors.

See it in colour : visit the Eastington Hub at <https://eastington.website>

Community

Eastington Primary School



The Year One children in Class 1 have welcomed twenty new reception children to the class this term. Our new children have settled into school life really well. They are learning new routines, making new friends, enjoying the new equipment in our outdoor area as well as exploring our environment at Forest School every Wednesday afternoon.

We asked the children what they have enjoyed about starting their school journey. Here are their thoughts:



Behati - "I like bringing my lunchbox to school".
 Charlie - "Playing with other people",
 Keira - "I like my friends and colouring".
 Maisy - "I like playing with the dolls".
 Clemmie - "I like starting to play on the bikes".
 Ella - "I like going outside and building".
 George - "I like drawing".
 Sienna - "I like playing with the animals".
 Arlo - "I like playing in the sand".
 Yasmin - "I like playing with playdough and playing outside".
 Patrick - "I like going outside".
 Eddie - "I like building with the Duplo".

Holly - "I like playing outside".
 Finley - "I like going in the garden and playing in the house".
 Jesse - "I like playing in the house outside".
 Jonty- "I like playing outside".
 Freya - "I like playing Peppa Pig".
 Aleiyah - "I enjoy going outside".
 Eva - "I like the playdough".
 Jaxson - "I like learning sounds".

The Year One children have also discussed what they enjoy about being the eldest in the class!

Scarlett - "I like maths 25 Club".
 Oscar - "I like learning new sounds".
 David - "I like learning".
 Reggie - "I like learning maths".
 Leila - "I like doing computer work".
 Georgia - "I like doing maths".
 Joseph - "I like doing phonics".
 Tommy - "I like writing stories".
 Maisie - "I like doing maths".
 Leo - "I like learning about numbers".



Groups



Eastington Playgroup

We are so pleased to be back at playgroup and to have come back to so many happy faces. We have been blessed with the good weather, which has meant lots of fun at the allotment and exploring our surrounding environment.



The children have been learning about decay and change by helping to compost their snack and lunchtime waste and walking to the allotment to dispose of it.

We talk about what can be composted and the children sort this at meal times and we have talked about how it breaks down.

As well as the unexpected sunshine we have enjoyed, we have had just as much fun in the rain! Splashing in puddles comes with so many learning opportunities and the children talk about what



happens to the water when we jump into the puddles, how they are formed and what is appropriate clothing to wear to participate.

'There is no such thing as bad weather, just inappropriate clothing'.



We have a strong emphasis on exploratory play at Eastington Playgroup, and very much encourage the children to have their own ideas on how to do things and develop their own thinking through play opportunities. We provide boxes and blocks every session and encourage the children to use these to represent other objects in their play; instead of giving them a stable for horses they have the resources to use their imagination to create one. We have been exploring different tools; making potions when given flower petals, water, lemons and limes. We notice that the children's language and thinking really develops through these activities as the children talk about what they are doing and investigate what happens and changes as they explore.

We are hoping that we will be able to hold some exciting fundraising events this academic year, and are hoping to be able to hold our sell out Bingo night again, early next year. So please keep an eye out for future posts where we will have more information on these.

It is never too early to register your child with us. Sessions for September 2022 are already filling up, so please contact us on 07977342742 or email us at eastingtonplaygroup@hotmail.com to arrange a visit or for a registration form.

Groups

Eastington Community Orchard Group



ECO are now starting to press apples and pears from this years harvest. Our Eastington Apple Day is on **Oct 2nd at the Old Badger** and we look forward to pressing all your spare apples so you can take home fresh juice.

Local juice will be available to buy from October 2nd from Wendy or Tom and soon after at Eastington farm shop

Wendy Fabbro

Craft & Chat



The Craft & Chat gatherings are going really well. There are a variety of crafts being done and the ladies are all helping and willing to demonstrate their skills to others who may be interested.

We have embroidery, knitting, cross stitching, crochet, needle felting and much more on occasions.

A really relaxed atmosphere with tea, coffee and biscuits thrown in (not literally).

We meet **every Friday morning 10 to 12 am** at the village hall £4 per morning.

We would also welcome any men who would like to join us.

This is a lovely way to meet others in the community.



SEVERNSIDE OSTEOPATHIC PRACTICE

Help for when it hurts



Registered Osteopath in Saul

Osteopathy is not just for neck and back pain
But for so much more.....

- ❖ Help for aches, pains and stiffness
- ❖ Help for when you are unwell and unsure
- ❖ Sports injuries
- ❖ Womens health – before & after pregnancy
- ❖ Children with growth and postural problems



Caroline Tosh DO MSc FSCCO

T: 01452 740818

E: ctosh1@talktalk.net

www.severnsideosteopathy.uk

Registered with the General Osteopathic Council

Hound & Hill



- Dog Walking
- Home Boarding
- Day Care
- Sitting/Pop In

Based in Eastington - Fully Insured

07795 466 329

www.houndandhill.co.uk

 @houndandhill

Community

All Change for our Buses

In August 2021 the buses serving Eastington were changed. There are upsides and downsides to these changes - the downsides particularly disadvantaging anyone working in Stroud.

What used to be our bus route into Stroud has effectively been replaced by the **Number 64 bus** - which now only really serves Great Oldbury. From Stroud it comes through Stonehouse and the new estate as far as **Westend (Gt. Oldbury Drive)** but then turns away from us up to Whitminster and on to Gloucester. There is one small concession in the form of one bus a day (6:22 am) coming to Eastington Cross for Stroud, and one (17:30 pm) from Stroud to Eastington Cross.

This bus runs every thirty mins, with an hourly service on Sunday and bank holidays. It also provides a late evening service, with the last one leaving Stroud at 10pm. This all very good IF if you have the health, strength and inclination to slog all the way up to Westend and back.

(Why on earth they couldn't have sent one around the village occasionally is anyone's guess and very frustrating)

What is now our 'new' village bus is the number 65. This runs from Eastington Cross through to Stonehouse and then Gloucester in the one direction, and to Cam, Dursley, Uley, Nympsfield and eventually to Stroud in the other - including a possible change ('guaranteed connection'!) At Dursley. This runs every hour. There is a 2-hourly service on Sundays, but no evening service (last dep. 18:20 from Gloucs or 18:45 from Stroud).

The journey to Stroud takes a mind and bottom numbing 50 mins or so(!) - Or around 35 mins to Gloucester.

Also note that to get to Stroud you now need to board the bus on the Badger side of the road. In practice, though, it may be easier to get the bus from the 'normal' side of the road into Stonehouse, and get a connection to Stroud from there.

As anyone who uses (or tries to use) the bus knows, at the moment there is considerable disruption to all services on a daily basis - often leaving people stranded or with with nightmare journeys. We know that the world is a funny old place at the moment and sincerely hope that this situation will improve. One wonders about bus drivers not being able to get to work because there are no buses.....

You can download the full time tables from our website at:

<https://eastington.website/bus64.pdf> and

<https://eastington.website/bus65.pdf>

(If your reading (or experience) of them is any different to ours, please let us know - Ed!)

or search for more information and updates on <https://www.stagecoachbus.com>

Good Luck!



Community

Eastington Community Centre and Owen Harris Memorial Ground

Part 4 - the next nail biting episode of how a new Community Centre was built in Eastington.

In the last article in 2001 ESCA had folded. The task of keeping the Village Hall going alongside trying to repair/improve the pavilion was overwhelming and life goes on, people moved on for other reasons.

Around 2002 a new Committee was formed. It was called the ECPWG. This stands for (I had to check and I was on it), Eastington Community Project Working Group. It does roll of the tongue as an acronym but if you have to keep typing out the full title it's a bit long. The new committee comprised mainly of original stalwart committee members, new people that had moved to the Village and parents of children at Playgroup. Playgroup didn't have another venue option and we needed a Playgroup in the Village.

Playgroup were the main users of the pavilion, there were some children's parties and the sports groups used the changing room, a rather uninviting space with a sign that said 'Please do not use the urinal as an ash tray', now that's a sign of the time!

The pavilion had to be kept going for now and folks spent many weekends and evenings down there re-cladding, re-roofing, patching, repairing, and so on to try to stop the rot but the rot was relentless.

Often a dilapidated building encourages vandalism and the pavilion was no exception, so motion cameras and a recorder were installed. To stop damage to the actual cameras mesh covers were placed over them. Weirdly no one was at the site but the motion cameras kept recording all night? On closer inspection it seems that a spider was very active webbing up the mesh cover. You can't stop nature and you certainly couldn't with the pavilion, mice were chewing the place to pieces'. What with that and the rot it's a wonder that none of the PG children fell through the floorboards.

ECPWG were new, enthusiastic and prepared to give it a go, researching every aspect of funding from local fundraising (bit tiresome for the locals

by now) donations, local Trust funds, 106 monies and the different types of grants.

Major grant funding was the key but if you are going to convince someone to give a grant for your project then you need to evidence it so we started with surveys of what folks wanted from a new Community Centre. Door to door surveys were organised and that actually got some new and amazing people involved. But in general the response was poor because this had all been done before, more than once. By this time most of the village had contributed one way or another with no actual result. Often the response was 'where's my brick, I paid for that'. Even the Parish Council, that had previously supported improvements at the site, weren't keen. In general everyone was rather cynical.

There was an idea that the Village Hall could be sold to partly fund the new Centre. That idea was met with furious opposition and at a meeting in the VH there was a quite hostile crowd ready to do battle to save it. This was quite quickly defused by our explanation. Thank you, you have provided the evidence that the VH is a much needed community resource as well. It answered one vital question from potential funders i.e. 'why do you need a Community Centre, you already have a Village Hall?' Answer, you can't hold a Cricket match at the Village Hall and the Village Hall has a separate and valued function for the Villagers.

We needed an Architect. A number of Architects were contacted. Some clearly weren't interested from the start, who could blame them, a community project with a bunch of volunteers. One did do some design's that looked a bit like the 'Star ship Enterprise', very weird and very expensive. But then we got lucky, one particular Architect looked at the site and was keen (or mad). Peter Holmes was later referred to as the most patient man on this planet. We couldn't have done it without him.

The Committee and Peter were keen to make the new building as environmentally friendly as possible with energy renewal technology.

Community

Eastington Community Centre and Owen Harris Memorial Ground

Initially we looked at ground source heat pumps but that was dismissed as too costly and quite a new technology potentially prone to failure. So we consulted with SWEA, South West Energy Agency. They did a site survey and provided a very comprehensive report, all for free. Anyone who knows the site will know that it can be extremely windy down there, what about wind turbines? No apparently, not windy enough. Really? One day parents and the children were queuing in the hall of the pavilion waiting for admission to the main room. It was extremely windy outside and there was a toddler standing just inside the entrance door when someone from outside opened it, she nearly got sucked out, poor little thing. Luckily, no harm done.

In the end the decision was to go for massive quantities of insulation, renewable materials and solar energy.

We consulted with GRCC, another free and very useful resource. They had a village hall's advisor who was able to share experiences of other VH's. They also had a funding expert although near the end it felt as though we were giving them more information about funding than they were giving us. GRCC - 'I might have a potential grant for you, what have you looked at so far?' Extensive reply on our progress. GRCC 'OK I'll look into it and get back to you' click burrrr.

We drew up a Business Plan. This invaluable document was a major tool that informed grant makers of the need for the Centre and it was continually updated to keep up with funding needs as the project progressed. By the end the BP had been tweaked so many times we were on draft 16.

There was a capital project so many grant makers wouldn't consider it however the Landfill Tax Credit Grants, (LFTs) now called 'Landfill Community Fund', seemed to be a good option.

The major requirement was that the project had to be within ten miles of a landfill site/recycle centre, tick, we had two. But that was complicated. First you had to enrol with ENTRUST as an 'environmental body', a lot for form filling

and a fee of £99.00. Money we really didn't have but the Committee agreed. The next stage was to register your project, a lot more paperwork but we managed it. That now meant that we could apply to LFT's for grants.

Actually we applied for anything and everything that we could. We talked to and schmoozed, anyone who would listen. People came to look at the site to see how bad the pavilion was looking (a plus in some ways by then) and we started to get some interest, helped by some local event fundraising such as car boots, firework nights at the Kings Head and those unforgettable Ladies Nights!!!

By this time we had been at it for about 3 years and it was hard work but there are always upsides and one was that we also had some fun. The Committee were a brilliant group of people, meetings were business like but also a bit of a social event with lots of humour (a crucial must have if you're embarking on something like this). We all learnt new skills and for me, a new comer to the Village, it meant meeting lots of fantastic people in and outside of the Community and making some great and enduring friendships.

But as time went on the estimated cost of the build was increasing exponentially, would it ever happen? Obviously the spoiler to that question is standing there large at life but where did the money come from in the end?

Find out next time.....



Gill Glover

Groups



WILD HOGS HEDGEHOG RESCUE

Registered Charity no: 1168800

Thank you for your support of this charity which cares for and rehabilitates sick and injured hedgehogs

Admissions: 07949 976717 General Enquiries: wildhogsoffice@gmail.com
www.wildhogshedgehogrescue.org.uk www.facebook.com/Hodgehegs

At this time of year, many people are tidying their gardens before the winter months. If you have left long grass, please do check it before mowing or strimming. Hedgehogs are seeking to build nests for hibernation, so a pile of leaves will be a welcome home for them. **If you are building bonfires, please make sure you light it on the day you make it or move it before lighting. Please light it from one side only to allow any wildlife to escape.**

Now is also a good time of year to feed hedgehogs. They need to gain enough weight to hibernate should the weather turn cold. Recently, this has not happened until December or January, so there should be plenty of time for even small hoglets to gain weight. Hedgehogs need to be 450g to successfully hibernate but they can gain over 100g in a month so please don't rescue any autumn juveniles while the weather is still warm. Supporting them in the garden by putting out food and water will help them stay in the wild where they are meant to be. As always, any hedgehog out in the day may need help so please do call us if you are at all concerned about a hedgehog.



Blue Frog Theatre Company

Auditions

It's been two years since we last performed our Community piece 'Paper Memories' so I am delighted and beyond excited to be getting ready for our **NEW** Performance!

'Bread and Butter' is a comedy set in the fictional village of Bramley where Joyce Hickelford and her ladies run Hickelfords Family Bakery. It's the hottest day of the year and Bramley Rovers are in the football final. This is an ordinary Saturday until Hickelfords hits the national headlines in a Hollywood style hold up that makes Joyce and her ladies' local heroes.

To be performed in the coming months, I will be looking to find an all-female cast of ladies (even if you've never performed before but would like to have a go) to perform with the addition of an understudy ready to take on any role if needed. **Auditions will be October.**

If you are interested in being part of this community performance and would like more information, then get in touch for further details.

Liane Hadley – lsnhadley@gmail.com or 07969 436138

Groups

Eastington Cricket Club



It was great to finally get started on a more 'normal' season this year. Our objective was very much to remain in the Stroud Premier Division which is a tough division. Having previously been promoted on more than one occasion and then relegated straight back to Division One, this was something we certainly wanted to avoid happening again.

This year was probably best described as a mixed season for us in terms of results.

We started with a disappointing run of 6 losses in our first 9 games, with 3 being cancelled due to poor weather in May. We had to wait until June 26th for our first win, which came against top of the league Cam 2nd XI. This gave us the confidence we needed to prove that we could compete and from then on we won 5 of the next 6 games, against some of the top teams in the division including Slimbridge and Rockhampton 3rd XI.

We went into August searching for 1 or 2 wins from the remaining 4 games for us to remain in the Premier Division, it went down to the last game of the season, where we had to face Cam again who had previously only lost one game all season which was against us, but fortunately we were able to beat them again and finished 8th, only 4 points away from 6th.

It was a very enjoyable season with honours going to the following...

Batting: Will Beese with 682 runs at an average of 52.46 with a top score of 123.

Bowling: Simon Wright with 20 wickets at an average of 20.80.

We've spent a lot of time working on the pitch this year, in an attempt to give us the best playing surface possible with the limited resources we have and it was already beginning to show by the end of the season. We followed this up with end of season renovations and will be keen to get going in early spring with the preparations for next season.

We're always happy to welcome new players or volunteers, we've already had interest from a couple of people to start playing next season. So if you'd like to get involved or know anyone that might, please get in touch with one of us on the details below, you can also follow us on Facebook and Twitter where regular updates are posted.

Club captain: Paul Hancock 07793 145254

Fixture information: Roger Beese 07884 438417

General matters: Keith Dench 01453 764990

Facebook: @EastingtonCricketClub

Twitter: @EastingtonCC

Web: eastingtoncc.play-cricket.com



FIRE WALK - in aid of Wild Hogs and Teckels!

Kingsway Sports Pavilion, Newhaven Road, Kingsway (opposite Asda)

Wild Hogs Hedgehog Rescue and Teckels Animal Sanctuaries have teamed up and we will be walking over hot coals for our two charities!

If you would like to join us and could raise some much needed sponsorship money, please sign up for the Fire Walk on our website www.wildhogshedgehogrescue.org.uk.

The firewalk will take place on November 20th 2021 at 6:30pm in Kingsway. Please do come along and support us, there will be stalls, a raffle, hot chocolate and cakes.

Community

Eastington Autumn Flower and Veg Show



The committee again would like to thank everyone that entered this year's Autumn Show and their fantastic entries.

The judges had an extremely hard job this year as the quality was so high, the jam/chutney judge had concerns that they wouldn't sleep that night!

We had 22 more entries than the last Autumn Show we held, along with 6 more entrants which is fantastic.

Mr R Hughes was again very successful winning Most Points in Show (men), Best Runner Beans, Best Allotment and Best in Show with his magnificent chrysanthemums which was decided between the judges.

Mrs L Hughes (no relation) won most points in show (ladies).

Mrs S Harvey won the Best Orchid award and Ms S Broomhall won the ECO award for best Fruit Product (Jam).

In the Children's section Miss A Wroe won the most points, with P Haines as runner up.

A special mention goes to to James Bennie for 1st prize for his brilliant garden on a plate.

Thanks again to all, and hopefully see you in the spring.

Dale Haines



Mrs L Hughes



Mr R Hughes

Community



Mrs M Gribble



Miss A Wroe



Master J Bennie



Ms S Broomhall



Groups

Severn Vale Rotary are meeting again!

Like so many community oriented organisations, recent months have presented many challenges in working with those in need and other like minded groups. However, throughout lockdown we have held regular meetings through ZOOM and honed our IT skills !

And now Severn Vale Rotary are back into their twice monthly breakfast meetings at The Whitminster Inn and have actively supported local events, including the recent Frampton Open Gardens. The Club has also arranged a Riverside Ramble at Arlingham in support of Longfield Hospice and enjoyed a social get together and picnic kindly hosted by David Merrett at Oldbury Farm.

Having recently accepted the role of Club President, Martin Greaves has set about galvanising us into post COVID action. As restrictions continue to be lifted we are now again developing and supporting various local initiatives.



Sunday 5th September saw our very successful Rotary annual motoring event "Route Seventy Severn Car Run". Despite a grey start to the day, the weather proved kind and a goodly number of veteran, vintage and interesting vehicles were enjoyed alike by drivers, passengers and spectators during their tour of Severn Vale and Cotswolds.

Plans are already in hand for this year's Christmas Carol Float and we look forward to everyone welcoming us and entering into the spirit of the season. Various competitions for the local youth are in hand, together the restoration of the kitchen garden at Lakefield School.

Dates are also set for providing a much deserved day out at Frampton Sailing Club for Gloucestershire Young Carers, together with a new year collection of disused computers for refurbishment and distribution by a local charity.

Not losing sight of enjoying each other's company, our next social evening is a visit to Javelin Park Incinerator followed by supper in a local pub. Perhaps we'll see you there !

For information about events and our twice monthly breakfasts, please visit our website www.severnvalerotary.org.uk or contact keith.rog@hotmail.com

With very best to all from members of Rotary Club of Severn Vale.

PS As this is written one of our mature members will be celebrating his 80th Birthday walking Offa's Dyke raising funds for Spring Centre supporting young people with learning difficulties. Happy - **and safe** - Returns Lloyd !

Update: Lloyd Morgans, has been successful in his quest raising funds for the Spring Centre supporting young people with learning difficulties. Congratulations Lloyd for successfully walking all of the 177 very hilly miles and Happy Birthday!



Angela Reader

In August we said goodbye to Angela Reader - a very much loved member of the community and the Church. The bell ringers at Eastington Church rang a quarter peal (1260 changes) of Grandsire Doubles for 45 minutes to celebrate her life .

" May she rest in peace and rise in glory".

Community



Part time Bar Staff

required by King's Stanley Village Hall

Mainly weekend work, for functions

Experience not necessary – training will be given

For further details please contact:

kshvbookings@gmail.com / 01453 821153

Fireworks



Firework season approaches again - and these days 'firework season' is a much better description than 'bonfire night'. The debate continues between those who believe they have a right to get enjoyment from fireworks regardless and those who see the terror and anguish they can cause to so many of our animals - both domestic and wild - and who may have to cope with the aftermath.

The Animal Welfare Act (2006) makes it an imprisonable criminal offence to cause unnecessary suffering to captive or domestic animals, and specifically prohibits setting off fireworks 'near' fields or buildings containing livestock. 'Near' is not defined but given that most damage is done by sudden loud sounds probably should be defined in terms of effect rather than meters.

Horses in particular are prone to be panicked by sudden very loud noises and may bolt or injure themselves or others. This could constitute criminal damage.

Modern fireworks can be spectacular and have a celebratory feel - and they can also be made much less destructive with reduced noise levels.

If you are planning a firework display this autumn please try to minimise the damage you may cause by:

- 1) Choosing quieter versions of fireworks - at least avoid any boasting a 'loud report'
- 2) WARNING all of your neighbours of what is about to happen so that they can take any necessary steps to protect their pets or livestock.

If you have vulnerable animals do make sure that they are secure at this time and if serious damage or trauma is caused get veterinary evidence straight away - You may have recourse to the law.

Notice From Eastington Park:

We just wanted to let you know that we have one firework display in October.

Date: Saturday 16th October 2021 Firing Time: 9pm Duration: 7 minutes

History

Eastington church choir – voices from the past

Stephen Mills

Like every village, Eastington has had a church choir from time immemorial. Although its scale and makeup has inevitably changed with the passing years, it has always been an integral part of ecclesiastical and village life. As well as for regular services, the choir has been there for all occasions ranging from christenings and weddings to funerals. Like most rural church choirs, Eastington's has always mainly comprised our clergy and villagers.

That brings us to the two photos of the choir separated by several decades.



The 1950 one had a bit of a chequered history. Many of you will remember the large Sunday morning boot sales that were held (many years ago!) in the car park by Stroud railway station. It was during one of these rummaging sessions that we stumbled across a large framed but very battered photo of the church choir. We bought it and took it home, whereupon the frame promptly fell to bits and was ditched. Somehow, the photo ended up in the attic where it remained forgotten for 30 years.

I recently rediscovered it planned to include it in the next ECN but by a strange coincidence, Jenny Riglesford posted a photo of the choir from

around 1970 on *Love Eastington*. It seemed like it was meant to be, so here are both photos – they give an interesting glimpse back to when life in Eastington was very different, but doubtless there will be many villagers who recognise themselves, friends, or family members. In some cases, the names hark back to families that can trace their village roots back for many generations.



Close up Left

Back row: Miss P Shill

Middle row: Mr C Keys, Mrs C Keys, Miss E Howell, Miss G Alder

Front row: Miss M Telling, Mr L Morris, Rev. H Potts



Close up Right

Back row: Miss J Keys, Miss D Warner

Middle row: Miss G Alder, Miss F Davis, Miss D Birt, Miss D Thomas, Mr L Hawkins

Front row: Sister F Clare, Mr F Birt, Miss B Telling

Community

Eastington Church Choir around 1970 (courtesy Jenny Riglesford)



Suggestions so far:

Bob Barnfield, Cyril Keys at the back,

Rev. Lewis, Betty Winfield, Floss Davis, Betty Barnfield, the Telling sisters, Jenny Riglesford, ? , Marcia Rugman? Ann Cobbold, Elizabeth Barnfield?

So, the faces may have changed over the years, but the choir has always been there, but what has been its purpose? I came across this interesting definition of a choir's function:

The four functions are to lead and enliven the congregation's song, to sing music that the congregation cannot, to serve as a small-group within the church for faith formation, and to sing beautiful and challenging music to glorify God and to edify the congregation.

All things that I'm sure our choirs have always striven to achieve!

The Wombles are at it again!



Some people moan about the litter left by others along our roads and hedges, and some people get up and do something about it!

Will you join the Wombling team this October?

It is a great way to make new friends, get outside, have some exercise and a laugh or two - as well as making Eastington an even better place to live!

The next litter pick is being organised by Tina J Davies and Lisa Hardy :-



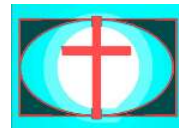
"Meet at **The Kings Head at 10am on the 10th October**, last time we did about 2 hours, kids welcome too. Wear high viz clothing if possible and bring a litter picker stick if you have one. Bags will be provided.

We cleared loads last time! and it was a good way to meet people. Message either of us on Facebook or email ECN) if you need any other information"



Church

Eastington Methodist Church



Leaving the Methodist Church

As a church, we voted unanimously in July to leave the Methodist Church of Great Britain denomination. This is a big step but is made necessary because we feel that the Methodist Church has, for many years, been moving away from its original foundation based on Scriptural Holiness preferring instead to conform to the ways of the world.

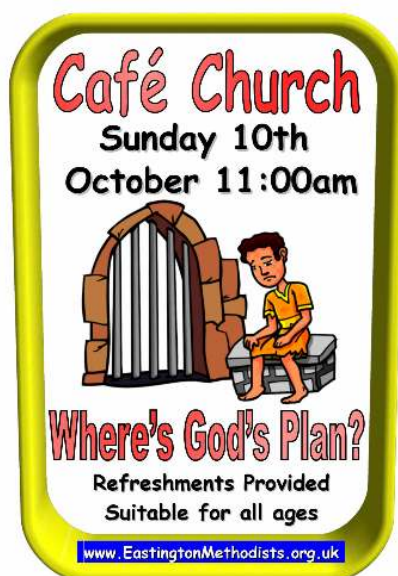
It is not an easy step and before the church is able to become independent, matters such as the future of the building need to be resolved. The building is not owned by the local church here in Eastington even though it was almost certainly built using local money and has been sustained and maintained by its local members and supporters. It is the people who make the church and not the building but the building is a vital facility if things like the Youth Club and the Baby and Toddler Group are to continue (bearing in mind that both have a lot of kit to store in between their sessions).

We are tired of seeing the Christian Faith compromised and would welcome the involvement of others who feel the same way as we move into a new future seeking to follow God's will and looking to see His power at work in our church and community. We have yet to decide what the new name of the church will be.

Back in the summer.....

The mini-series of summer fun events were successful and the last one, involving a bouncy castle, was blessed with fine sunny weather and a particularly good turnout. It was good to meet new people as well as meet others for the first time since the start of the COVID pandemic.

Also from August, some of our services have returned to the Café Church format which is suitable for all ages.



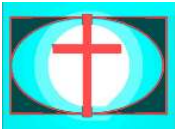
Our next Café Church is on 10th October with Beck Burgin leading it. Both it and the one on the 14th November are following the story of Joseph (of multi-colour dream coat fame). His brothers have already sold him to slave traders who are heading for Egypt.

At Café Church, we all sit around tables and there is usually a craft activity and colouring to keep the children amused although we try and involve them with what is going on. Drinks are provided at the start and again at the end when cakes are also provided. Please do come and join us, you will be very welcome.

On the other Sundays in the month the services are more conventional and are a great way to learn more about Jesus and what He can do in your life and for those you love.

Ours is a friendly church and quite informal – no need to dress up posh and no need to book and no need to bring piles of cash with you – just come.

Church



Eastington Methodist Church

October sees the return of our Messy events after a gap of nearly two years. This one is in the autumn half term week and on the Monday morning instead of the Toddlers Group whose normal attendees we hope will come and join in.

There will be a variety of activities suitable for all ages and a session part way through involving everyone.

As with all our events, hand sanitisers will be available for frequent use and mask wearing is advised (but is not mandatory) especially if things start to get busy. We would ask people to stay a respectable distance from others particularly if they look like they are feeling uncomfortable or vulnerable.

Into The Book

We have recently resumed acting out Bible stories at Whitminster School at assemblies. This takes place on Thursday mornings roughly fortnightly in term time starting with a rehearsal at 8:15am at our church and finishing at the school at about 9:45am. Our band of would be thespians has become a little depleted and we would love to hear from anyone who might like to join us. It is not necessary to be able to remember long and complex scripts (few of us are that good).

Youth Club

Youth club is running every Friday at 7pm and new members are welcome. We would also be interested in hearing from anyone who would like to help us run the youth club.



Eastington Methodist Church Main Activities		
Baby & Toddler Group		Mondays 10:00 – 11:30am
Prayer Meetings using Zoom:		Tuesdays & Fridays 8:30 – 9:00am
Lunchtime Bible Study (includes a light lunch)		Tuesdays 1:00 – 2:30pm
Bible Study House group using Zoom		Tuesdays 7:30 – 8:45pm
Youth Club (11-18)		Fridays 7:00 – 9:00pm
Sundays at 11am:	Café Church (all ages together)	Sunday Oct 10th, Nov 14th
	Morning Services (refreshments afterwards)	The other Sundays 11am

If you'd like to know more; or you'd just like someone to talk to; or if we can help in any way; give us a call.
Ken & Beck Burgin 01453 827414 or 0751197265 or email: info@EastingtonMethodists.org.uk

www.EastingtonMethodists.org.uk

Church



At St Michael and All Angels Church, Eastington, our regular pattern of services continues with Holy Communion at 11.15am on the 2nd and 4th Sundays of the month.

On 14th November 2021 we will be holding our Remembrance Sunday service.

We are also planning to resume our Christingle Service this year.

There are other services and events taking place across the Team and to keep up to date you can ask to receive the weekly pew sheet by emailing: officestroudwater@gmail.com. This will also give you the link to Sunday's Evening Prayer via Zoom at 6pm.



Alternatively contact:

Rev Steve Harrison: 07466 858975

rectorstroudwater@gmail.com

Rev Liz Palin

tv1stroudwater@gmail.com

Rev Dave Bishop: 01453 822332

tv2stroudwater@gmail.com

Mike Naylor: 01453 822728

mike@mikenaylorsurveyors.co.uk

You can also join us for Daily Prayer between Mondays and Saturdays at 9.30am for Morning Prayer and 9pm for Compline on the Stroudwater Team Facebook page.

The church is open 7 days a week, between the approximate hours of 9am-4pm. Please come and visit if you would like to experience the beauty of the church building or would like to offer a prayer or for a period of quite reflection.

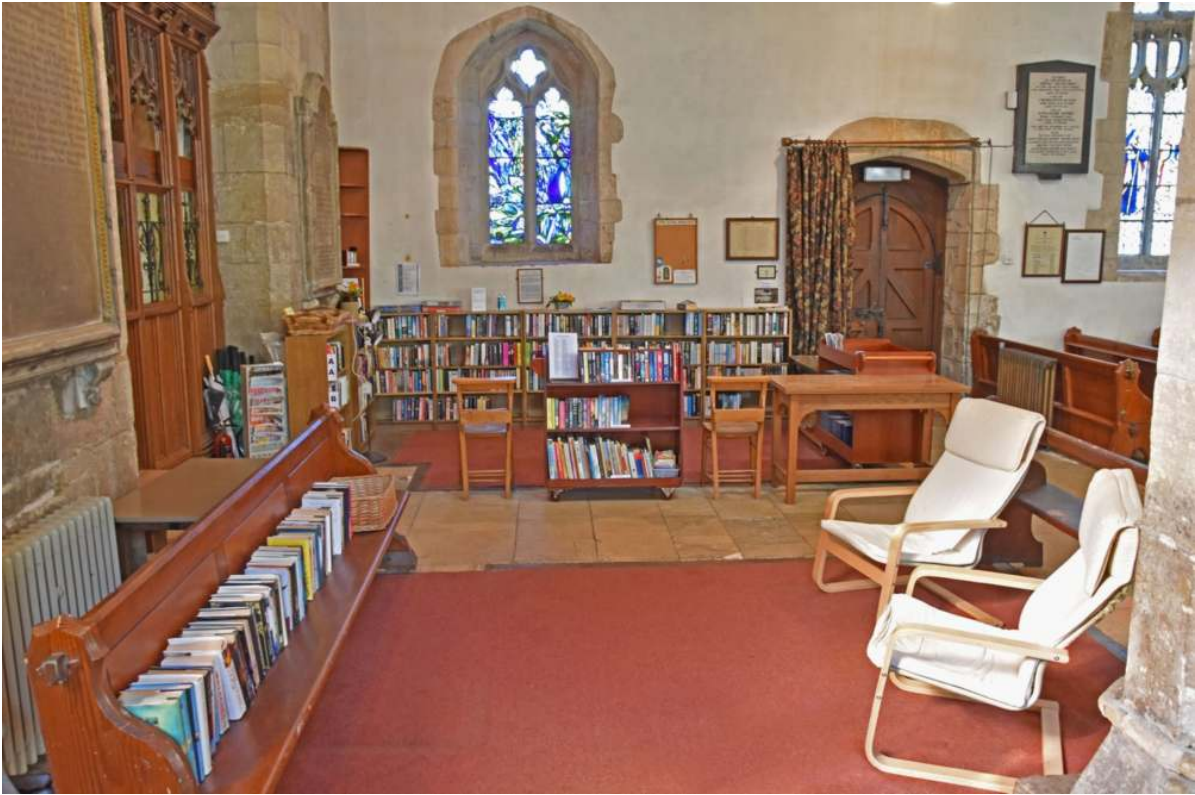
The Stroud District Foodbank collection point at the back of the church remains open and we have some regular givers but could always do with more. All donations are gratefully received and taken to the Foodbank on a weekly basis.



The well-used library at the back of the church which is regularly replenished with new books magazines and jigsaw puzzles continues to flourish.

Church

St Michael & All Angels Church Library



The re-organisation of the library has continued since we were able to re-open in March.

As available space is limited generally, the collection is restricted to novels and biographies only.

Fresh titles are added every few months, listed and displayed on a separate bookshelf, and 43 novels have recently been added for September.

Space for hardback books is confined but recent publications prior to them coming out in paperback are welcomed. The height of the shelves means that the main collection is in paperback form and, if you have finished with relatively new novels which others might well enjoy, please place them in the 'returned books' basket so that they can be added to the next list of fresh titles.

Please be selective rather than depositing full carrier bags de-cluttering your own shelves!

There is a suggested donation towards Church funds to borrow or purchase books, at 25p and 50p respectively.

Pauline Allen and Lis Greenaway

NB. The phone box library in the village is also open for you to share your favourite books - but can we make the same plea for the same reason - space is limited!- only bring books that you have specially enjoyed and do not use it as a dumping ground for armfuls of unwanted books. Please give priority to children's books - and please do not leave anything on the floor, or (doh) people cannot get in!

Community



We share your genuine care

the gold standards
framework®

Attentive personal care &
luxurious comforts set in
a beautiful Cotswolds park

Award winning nursing care home
The Hollies provides the ultimate in
state-of-the-art accommodation.
Spacious, beautifully designed rooms,
suites and living areas along with pretty
gardens provide residents with a high
quality of living. Exceptional dining caters
for the most discerning preferences and
needs. An array of activities, events and
celebrations are enjoyed by all.

HOLLIES NURSING CARE • HOLLY OAK DEMENTIA CARE • APARTMENTS BY THE HOLLIES

We welcome immediate and planned admissions.

For tours or further information:

Call **01453 541400**

Email info@thehollies.co.uk

thehollies.co.uk

Drake Lane, Dursley GL11 5HA



the Hollies

NURSING CARE HOME

HELPING LOCAL PEOPLE IN CRISIS

STROUD DISTRICT FOODBANK

registered charity (no 1176306)

Stroud District Foodbank was established in December 2011. A member of the Trussell Trust, they work alongside, but are independent of, the Long Table, Kid's Stuff and the Furniture Bank. They have three part time paid staff, 7 volunteer trustees, around 150 regular volunteers and another 150 volunteers involved in supermarket collection days.

The food bank relies on the support of the local community through volunteering, food donations and fundraising. All the food is donated by the local community - individually or through collection baskets at churches, schools, supermarkets etc.



The main warehouse is at the Canal Iron Works, Hope Mill Lane, Brimscombe Port, where the donations of food - as well as toiletries and household supplies - are gathered, sorted and stored before being transferred to a network of drop-in centres. Volunteers sort the donations, checking that food is in date, and then pack it into parcels ready to be given to people in need.

Foodbank clients are referred by frontline care professionals such as doctors, health visitors and social workers who identify people in need and can issue them with a voucher for an emergency food parcel - normally enough to supply the family for three days. Special holiday time parcels are also made available.

In 'normal' times clients come to one of the drop in centres to collect their food parcel. A volunteer will meet them and, over a warm drink or free hot meal, offer advice and signpost them to other appropriate sources of help. During covid restrictions, volunteers have been delivering food parcels directly to people's homes.

Collection Basket in St Michael & All Angels Church

Adjacent to the library, the food bank collection basket was generously supported earlier in the year which made it possible to take a delivery once a fortnight to the Stroud warehouse, however contributions to the basket significantly reduced through late spring and summer.

The very real need for this organisation was increased by the serious difficulties presented by Covid and on-going demand for donations remains high. It is encouraging to see how well-run the warehouse is in Stroud and every delivery made from the collection basket is hugely appreciated.

Currently, their store of tea, pasta and cereal is well filled but the list of many other suggested items required is displayed beside the basket and on their website (strouddistrict.foodbank.org.uk). Especially needed at the moment are tinned foods as well as non-food items such as toiletries and hygiene products. With winter approaching, all your donations will be particularly appreciated.

You can drop your donations into the basket at any time.

A crisis situation can happen to anyone - and does to far too many - please help.



Frampton surgery update - Patient Participation Group (PPG)



We continue to work with the surgery to improve the service and our latest update is below. **We also want to take this opportunity to reassure you that there is no truth to the current rumour; there are no plans to close Frampton Surgery.**

Please get in touch if you have any feedback on services and we will continue to represent you. You can email myppg@framptononsevern.com in confidence, or call Ali on 741988, or Jane on 740964.

Direct from the surgery ...

Face-to-face appointments:

With the easing of restrictions nationally, we are looking at changing things again at the surgery to improve our patients' experience. However, we must balance this with our responsibility towards our more vulnerable patients. Covid hasn't gone away and we need to be mindful that we have a duty to protect all our patients, including the most at risk. We have turned on the check-in screen again, located in the lobby in front of reception. If you have an appointment at the surgery, you can mark yourself as 'arrived' on the check-in screen and save waiting in the queue, if you are comfortable to do so. We still ask that you wear your mask to the surgery unless exempt and there is hand gel and spare masks at the front desk. We are still operating a one-way system through the surgery to minimise traffic at the front. Thank you for your cooperation with this.

We are offering some routine face to face GP appointments which can be booked up to 4 weeks in advance. They are staggered to prevent overcrowding in the waiting room. Urgent, same day appointments are being triaged first. Reception is trained in Information Governance and Patient Confidentiality. We ask Receptionists to get an indication of the problem as it helps the Clinicians to triage and deal with the most urgent priorities first.

Prescriptions: Dispensary is as busy as ever. Collection of prescriptions is still via front desk at present.

Practice nurse: We have recently recruited a new Practice Nurse, Pam Klus, following the retirement of Alison Shaw. Pam has come from community nursing and has lots of experience in wound care and management.

Demand: Whilst the waiting room may look serene, the workload has never been higher. Nationally, demand for GP appointments is up 31% since pre-pandemic. The reasons are multi-faceted and include the roll out of the Covid vaccine and delays to hospital treatment, leaving patients needing more input from us as they wait for longer periods of time for their treatment. Some demand is coming from an increase in the complexity of patient conditions due to the pandemic and ongoing effects of the virus, including Long Covid.

Covid vaccinations: We continue to work with our other Partners in the Severn Health Primary Care Network to deliver the Covid vaccine rollout. We are still waiting to hear from the Government, JCVI and NHS England about this year's Flu programme and Covid booster roll out. We will continue to work at Beeches Green with our other Partners in this next phase and will contact all eligible patients as soon as we have more information.

Shingles vaccinations: Shingles vaccines – shingles vaccines are available for anyone aged 70 and remains available to patients until their 80th birthday. If you would like to have the shingles vaccine, please phone reception on 01452 740213 to arrange an appointment.

Feedback: We acknowledge that we do not always get things right, and as such, I would encourage anyone who has not been satisfied with the service they have received to contact us via email – frampton.surgery@nhs.net or letter, addressing it to the Practice Manager. We welcome all forms of feedback (including the positive!). Feedback is useful as it helps us to address issues that may not be working well. However, recently we have seen a lot of comments of dissatisfaction on Facebook. Whilst I can appreciate people's frustration, particularly when things haven't gone well, I would encourage you to contact us direct - or your Patient Participation Group - so we can properly deal with your concern. Posting comments on Facebook can have a demoralising effect on staff, particularly when they are personal. Following the death of Caroline Flack, the #bekind was trending on Twitter.

I can assure everyone that we are working hard to continue to provide and improve the service at Frampton.

Wishing you all well for the Autumn.

Claire Farragher, Strategy Manager

Frampton & Stonehouse Practice Group