



# Eastington Community News

edition  
195

<https://ecn.eastington.website>

Dec 2022 - Jan 2023



Eastington Community News  
Love Eastington

Celebrating Community  
in Eastington



Registered charity number 1133354

# Recycle your Tree!

In Aid Of



**LONGFIELD**  
Community Hospice

Registered Charity No. 298627

Register here before Tuesday 3rd January 2023 @ 10am



**[www.just-helping.org.uk/register-tree](http://www.just-helping.org.uk/register-tree)**

Longfield Community Hospice will receive 90% of the net monies raised JustHelping will distribute the remaining 10% to other local charities

We will be collecting in the following postcodes on

8th, 9th and 10th January 2023

**GL2 (2,3,4,7), GL3 (4,9), GL4 (0,3,4,5,8), GL5, GL6, GL7 (1,2),  
GL8 (8), GL10, GL11, GL12, GL13**



*giftaid it*



Registered with  
**FUNDRAISING  
REGULATOR**



## Your news.....your ECN!

Written by You, Produced by Sue Halas and delivered by many!

Dear Readers,

Welcome to our festive edition of the ECN. Inside you will find some great articles and plenty of festive cheer!

A big THANK YOU to the Parish Council for approving a grant, which means our village newsletter can continue for many months to come.



May I wish a Merry Christmas and a Happy New Year to all our advertisers, contributors and of course to you, our readers.

Best Wishes

Sue

Sue Halas , Editor

Gill Glover, Distribution Manager

Jan Low, Technical Support



## Inside this issue...

<b>Community</b> 6 Novalis Trust 7 Craft and Chat 8 StroudWater Team of Churches 11 ECO Group 12 Eastington School 15 Eastington Playgroup 16 Church of Christ the King Eastington 19 Eastington Village Hall	<b>Articles</b> 2 So Much to be Thankful For 4 Some of Eastington's Strangest Products	<b>Regular Features</b> 3 Gardening News 14 Seasonal Recipe 19 Kids Stuff 22 Family Announcements
<b>Advice and Support</b> 23 Spinavita Chiropractic Back Cover On-line shopping Fraud Food Bank	<b>Charities</b> 22 Royal British Legion Front Cover Longfields Recycle your Christmas Tree 19 Royal British Legion 17 Wild Hog Rescue	<b>Special Features</b> 10 Church Services & Events 20 Eastington Parish Council 22 Village Hall Committee 24 Frampton Village Society Talks

**Deadline for next issue : 16 January 2023**

(For delivery around 1<sup>st</sup> Feb 2023 )

Please email your articles, stories, photos and events to [articles@eastington.website](mailto:articles@eastington.website)  
or, for ads please use [advertising@eastington.website](mailto:advertising@eastington.website)

*Space is limited - we may omit, edit or shorten articles. Views expressed in ECN are not necessarily those of the editors.*

**See it in colour : visit the Eastington Hub at <https://eastington.website>**

## So Much to be Thankful For!

Not so long ago, we all had to come to terms with a world which had literally changed overnight! From then on and for a lot, lot, longer than any of us would have wanted or imagined, private visits and public gatherings were suspended and so many life affirming activities, we all took for granted, were lost or at the very least, suspended for month after month.

Since so-called "normal activity" in our village resumed - yes the good and the bad - it's got me feeling just how lucky we are, to be living in a village such as ours, which contains so many kind, helpful and friendly people. Just look around you and I bet like me, you wouldn't notice the full extent of the activity which goes on right under our noses?

From running - like me around the village, or walking your dogs, riding your horse, ambling around the pathways, picking-up litter or even just cutting your hedges or lawns to make things look so neat and tidy, the people you meet in the vast majority of cases, will smile back to you and if there's enough time, will hold a conversation.

And then, there are the whole host of local voluntary organisations, groups and associations, which regularly meet in our village and make a big difference to our mental, spiritual and physical well being.

Think about it, a relatively small village such as ours, which still finds enough time to care for its fruit in a community orchard, as much as trying to keep us all together by organising the compilation and free delivery, of the very newsletter you are currently reading, is something we all should be very willing to celebrate?

We in Eastington have so much to be thankful for, even when times are getting tough again, in fact it's probably at times such as these, when our community needs to stick together and see the positives which are still around us, namely its people!

And just to try and make a very small yet important point, a lovely elderly gentleman called Lawrence who had moved into the village recently, just happened to tell me while on a walk through the village, that he had been brought-up in the Battersea Power Station area of South London during the second world war and I said he'd be amazed at just how much that area of London, had changed over the years?

In fact I promised him I'd show him a picture of the newly renovated area, whenever, I came back from visiting my son and daughter. But foolishly, I never did get around to asking him where he actually lived in the village?

So I've attached the promised photograph to this short article, just so Lawrence, his family and any others know, that when it comes to the people of Eastington, we don't often forget and that many of us still care!

Let's keep together!

David Aston,  
Bath Road.





## Create your own Winter wonderland

Winter can often be a time of year that we associate with being indoors, in front of a fire, maybe with a hot chocolate in hand. Usually, the last thing on most people's minds is the garden.

The garden can feel a bit dreary at this time of year, but it doesn't have to be this way. Did you know it is possible to have something flowering in your garden at any time of year?

I am sharing three of my favourite Winter flowering plants, which will brighten any garden or home;



*Helleborus x ericsmithii* 'Pirouette' (PBR) has a fantastic long flowering period from from December until April. The flowers have rosy-pink tones and the dark purple stems against the green foliage is beautifully striking. Plant in a semi-shaded spot, under the canopy of a tree is perfect.



*Sarcococca hookeriana* 'winter gem' is a shade loving evergreen shrub. The red flower buds produce small white flowers in late Winter which are also highly scented. This is perfect for Winter interest, and for early foraging pollinators.





If you can't quite face outdoors just yet why not try indoor bulbs? Daffodils like Paperwhite (*Narcissus papyraceus* 'Ziva') can be planted indoors for early flowering. These look fantastic topped with moss in small terracotta pots down the center of the table, and the scent will fill any room.

If you're looking for more garden inspiration, I have recently published blogs on bulb planting, bare root hedging and tips on making Christmas more sustainable on my website.

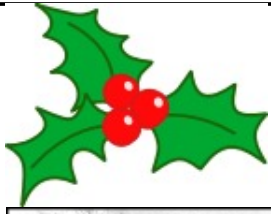
I'd also love to hear your feedback on what you might like to see from me in the 2023 Eastington Community News garden feature. Please drop me an email or find me on social media.

 [www.jhgardendesign.co.uk](http://www.jhgardendesign.co.uk)

 [jessica\\_holcombe\\_garden\\_design](https://www.instagram.com/jessica_holcombe_garden_design)

 Jessica Holcombe Garden Design

**Wishing you all a very Merry Christmas  
& a happy and healthy New Year**



## Some of Eastington's Strangest Products?

### Stephen Mills



Before we get to what these actually were, where were they made? - the answer is Meadow Mill (Figure 1). And what are we talking about here? Those of us of a 'certain' age will remember the old-fashioned valve radios, the state-of-the art in the days before transistors and digital media. These all had one thing in common – if you turned them round, they had a back made of something that looked like cardboard and was filled with a myriad of cooling holes or slots to let the heat out generated by the valves and other gubbins (Figure 2).

Remarkably, there is a

good chance that it was manufactured here in the village, in Meadow Mill. They were produced roughly between 1910 and some point in the 1930s, alongside other seemingly oddball materials that we'll come to in a minute.

The material used for radio backs was generally known as 'Millboard' or 'Fibreboard', a type of stout board made from a pulp of old rope, sacking, and other coarse materials, that was mixed, mashed and rolled out into sheets under high pressure. There were a number of variants produced, most made from waste materials, different manufacturers frequently calling what was virtually the same material by alternative names. At Meadow Mill, the mixing took place in three or four pulp beaters installed in a brick-built building at the front of the main mill referred to as the "Pot House". The beaters were driven by a pair of water turbines powered by the river Frome, and used to mix the various constituents for the different types of boards produced. On a quiet night, the whining sound of the beaters could apparently be heard as far away as the centre of the village. In later years, power was supplemented by a Robey steam engine that could be coupled up to the turbines when more power was needed.

A pulper supplied by Emell Hassberg of Berlin was also later installed for pulping newspaper, often added to the mix - this used a worm drive and apparently operated almost soundlessly (there's German engineering for you!). The mush was later turned into boards by pressing to the required thickness using hydraulic presses and/or rollers.

Quite how the mill became a specialised centre for the production of radio backs is lost in the mists of time, but the market grew as radios increased in popularity and availability. This niche application blossomed, and radio backs were produced for most of the major manufacturers that included Pye, Murphy, Halcyon, Graves, Vulcan, Cassor and Ecko. The backs were stamped out using a variety of specialised presses supplied by Taylor & Challen of Birmingham (Figure 3), and H O Strong of St Paul's in Bristol. These punched out the required shape, number and pattern of ventilation holes.

**Figure 2 Typical radio backs with cooling holes**





## Other oddities

As well as fibreboard, Meadow Mill also produced what was known as leatherboard. This was made from a pulp of paper, rags, string, old newsprint, and in this case, scraps of leather. The leather working industry generally produces quite a lot of waste such as trimmings and shavings, and these became the main source for leatherboard manufacture. It was used widely by the boot and shoe trade, being pressed into service for internal shoe parts such as insoles and heel stiffeners. For many years, leatherboard production was an important part of the mill's output; throughout the 1910s to the 30s, trade directories (such as Kellys, 1914) refer to Meadow Mills Ltd. manufacturing this.

For a time, there were a whole host of variants on the theme produced at the mill: engine boards, embossed boards, portmanteau boards, etc. each reflecting a specific use for this versatile range of materials. Some of these had a painted finish. To achieve the appropriate finish, sheets were passed through textured rubber rollers to create the required surface effect. The painted boards were then dried in a long tunnel oven or a large rotary drier, this replacing the previous time-consuming method of hanging sheets up in a steam-heated room and allowing them to dry gradually. The top floor of one building was used for board "seasoning". Finally, finished sheets were cut to size using a powerful guillotine.

Another speciality was the aptly-named suitcase boards, produced in large sheets and used for the production of suitcases and bags. Suitcase manufacturers became a major customer, taking a variety of types of board with either textured, embossed surfaces, or painted finishes. These were usually red, black or brown (self-coloured) although the firm also prepared some using their own surface coatings based on pure Shellac in order to achieve a high gloss finish. A range of products evolved, including a pig-skin embossed effect, plus a variety of painted finishes that included "London Tan", the latter chiefly supplied to Cohen & Co. Sheets were also supplied to the car trade, for use as internal panels by companies such as the Standard Car Company and Vauxhall.

By 1939, the Ruberoid Company had taken up residence at Meadow Mill, emphasis now shifting more to fibreboard. Ruberoid's occupation of Meadow Mill was a wartime evacuation, ensuring that all of their production was no longer centred in Enfield, an area at greater risk from German bombs. The company carried on making fibreboard for a time and also manufactured roofing felt, damp proof courses and electrical insulation, most aimed at the construction industry. Ruberoid returned to Enfield after the war.

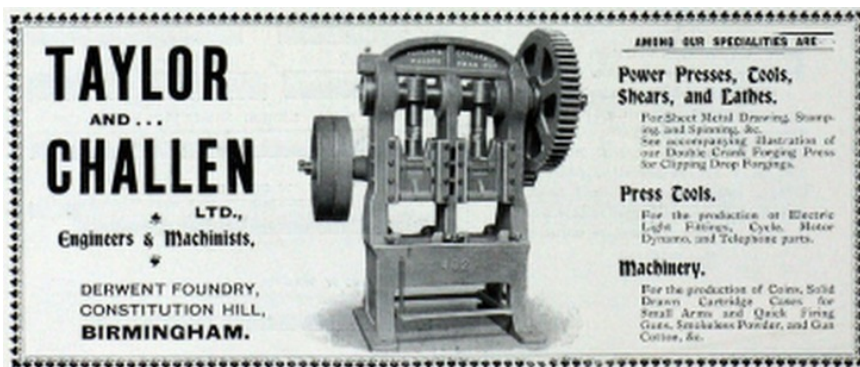
## The end

Inevitably, the market for Meadow Mill's products dwindled as new technologies and materials became available. Stamped shoe parts gave way to injection moulded pieces made of thermoplastics, and the market for radio backs diminished as radios themselves changed in design. Interior car panels and suitcases were increasingly made from a range of moulded plastics and other materials. Most of the infrastructure and even the buildings at Meadow Mill that housed the manufacturing processes have long gone, leaving only distant memories.

A few other mills dotted around the county soldiered on producing leatherboard and fibreboard for a few more years, but like Meadow Mill, all eventually went out of business, effectively bringing to an end this interesting period in the mill's history, one that's been largely forgotten.

**Figure 3**

*Early advert for Taylor & Challen*



## NOVALIS TRUST OPENS NEW SCHOOL IN EASTINGTON

Local charity Novalis Trust has opened a new day and boarding school on its site in Eastington, previously home to William Morris College for many years.

William Morris School - which welcomed its first pupils in September – is a special school for children and young people with complex learning needs and associated social, emotional, and behavioural difficulties.

It can accommodate up to 40 children and young people between the ages of 7 and 19 and offers places for day students as well as boarding accommodation for 16 children and young people.

The school – together with its sister school Cotswold Chine School based in Box, Stroud – is one of the few educational establishments in the country to adopt a truly 'trauma informed' and 'trauma responsive' approach to care, therapy, and education.

Novalis Trust CEO Jake Lukas explained that the decision to open the new school was based on the high national demand for special needs schools in this age group.

"We were turning away children and young people because we didn't have enough space at Cotswold Chine School to accommodate everyone who wanted to come here," he says. "With the opening of the new school we're able to offer more young people the opportunity to benefit from our trauma-informed approach and our developmentally sensitive curriculum pathways.

Our staff and senior management are very excited about working with all the children and young people who are joining us." Headteacher Gareth Parker says he is delighted with the progress that staff and pupils have made since the beginning of the school term. "Everyone has been working extremely hard to bring a sense of rhythm and calm to the pupils' daily routine so that we can ensure that we are providing each and every one of them with an environment where they can feel safe and supported," he says. "We currently have over a dozen day pupils, but we look forward to accepting more children and young people, some of whom will be boarders, as the year progresses."

A significant refurbishment programme was carried out at the former College site over the summer which included improvement of accommodation spaces, updating play equipment, and installing more teaching space. The freshly decorated classrooms – two of which are newly constructed modular spaces – have been christened after six of the designs of their namesake William Morris: Acorn, Dove, Iris, Lark, Medway, and Vine.

Gareth added: "As a School, we're very much looking forward getting involved with the local community and supporting events in the area, including this year's Eastington Christmas Tree Festival."

The Trust is always interested in speaking to people who would like to join its staff team. In addition to roles at William Morris School, there are also opportunities within its care, therapy, domestic departments at its other sites in Box, Painswick, and Stroud.

Further details of current vacancies are on the Novalis Trust website:

<https://novalis-trust.org.uk/careers/vacancies/>





## Craft and Chat



Some of our members went to the Birmingham Craft Exhibition they all really enjoyed their day out. Although I think they walked their legs off!

Looking good ladies!

**Craft and Chat at the Village Hall every Friday morning from 10.00am**

**The Crafty Christmas Fair** in the Village Hall in November was a big success, with many many hours-worth of beautiful handiwork on display - and plenty of very happy christmas shoppers!





## St. Michael and All Angels Church Eastington

### The Big Wrap

The Big Wrap took place at the Church on Saturday 19<sup>th</sup> November when we packed well over 200 shoe boxes and parcels with age related children's toys, colouring books and pens together with



warm gloves, scarfs and hats to bring some Christmas cheer to children in Ukraine. This is in addition to the 327 parcels already packed. The event, organised by Tricia Pine and hosted by the Church, attracted about twenty packers and numerous donations from far and wide. Tricia said she was overwhelmed by the generous response and help from the army of volunteers who wrapped and packed. Help was on hand throughout from Derek and Lis and tireless support from Barbara who had coffee, tea and cakes on hand. A local family who helped at the event commented "how enjoyable it was to do something worthwhile". Two van loads of parcels were delivered to Gloucester before the onward journey to Ukraine in time for Christmas.



### Church Services

Services planned for December and the New Year include a Festival of Nine Lessons and Carols on 11<sup>th</sup> December and the usual Christingle Service on Christmas Eve at 6pm. This year we will be celebrating Midnight Mass at Haresfield Church at 11pm.

**We will resume the regular pattern of services on the 2<sup>nd</sup> and 4<sup>th</sup> Sundays at 11.15 in the new year.**

### Festival of Nine Lessons and Carols



A traditional service to provide an escape from the pressures of Christmas preparations and celebrate the birth of Christ

St Michael all Angels Eastington Sunday 11<sup>th</sup> December 2022 at 11.15 followed by Mulled Wine and Minced Pies



We extend a warm welcome to you, your friends and family to join us at our Christingle celebration – a perfect way to start the Christmas celebrations on the 24<sup>th</sup> December 2022 at 6 pm.

Lasting for approximately 40 minutes, children and their families take part in this lovely candle lit service which always attracts a large gathering, so get there early! Each child who brings a collecting box candle will be given a Christingle, which is an orange decorated with sweets and a lighted candle. As usual all the proceeds will go to The Children's

Society, a national charity which helps vulnerable children. In addition to money raised through each collecting candle, there will also be an opportunity to make additional donations at the service.

If you would like to attend the service and receive a Christingle, collecting boxes will be available at the back of the Church two weeks before Christmas or contact Jacky Naylor 01453 828682.

A full list of services throughout the Team can be found on the website so take a look at:

**<https://www.stroudwaterchurches.org.uk/>**



## Church Roof

We have been advised by Historic England that St Michael and All Angels Church has been added to the Heritage at Risk Register. This comes after some lobbying on our part in view of the condition of the roof cover which is in urgent need of replacement. This should not be taken to be a criticism of our stewardship of the building but is a recognition by Historic England that we are facing a significant challenge which is beyond the resources that we can find locally. Inclusion in the list will act as a working tool to help define the scale of the problem and prioritise action by Historic England, local authorities, funding bodies and others who can play a part in making the Church building safe and sustainable for future generations.

## Food Bank Update

We have collected and delivered to the Food Bank well over 200kg of food so far this year! We are most grateful to people who have regularly donated to this much needed resource. All donations are gratefully received and taken to the Foodbank on a weekly basis. Please remember those who are facing the stark choice between food or fuel particularly during the festive season.

Shopping list of the top ten items for The Christmas Appeal:

*Boxes of Chocolates*  
*Boxes of savoury crackers*  
*Large packets of crisps*  
*Nuts*  
*Cranberry sauce/pickles*  
*Tinned ham*  
*Christmas cake/Pudding/Biscuits*  
*Hot chocolate*

There is a collection point at the back of the church which remains open during the day time

## Ukraine

We have set up a collection point in the Church for specific items for Ukraine. The list is as follows: Boots and new socks, baby food and hygiene items, tinned food, chocolate, torches, batteries, medicines, medical equipment, adult hygiene, clean new underwear, and working android tablets. All items collected are taken on a weekly basis to the Polish Association and Ukrainian Church in Gloucester who then transport the goods overland to the areas in Ukraine where the need is greatest.

## Library

The well-used library at the back of the church is re-stocked with fresh books on a regular basis. You are welcome to come into the church for a quiet browse and borrow a book for a very modest fee.

## Information

For further information on forthcoming events taking place in Eastington and across the Stroudwater Team you can ask to receive the weekly pew sheet by emailing: [officestroudwater@gmail.com](mailto:officestroudwater@gmail.com).

If you would like more information or simply to be in touch, please contact one of the Team clergy:

**Rev Steve Harrison:** general queries but particularly events in the Stanleys, Selsley, Frocester, Moreton Valence and Whitminster: [rectorstroudwater@gmail.com](mailto:rectorstroudwater@gmail.com)

**Rev Liz Palin:** Frampton-on-Severn, Arlingham, Fretherne, Framilode and Saul: [tv1stroudwater@gmail.com](mailto:tv1stroudwater@gmail.com)

**Rev Dave Bishop:** Stonehouse, Standish, Eastington, Haresfield: [tv2stroudwater@gmail.com](mailto:tv2stroudwater@gmail.com)





GRATEFUL FOR CHRISTMAS

A message from the Rector the Rev. Steve Harrison

I would like to take this early opportunity to wish you a very blessed Christmas.

With so much turmoil and uncertainty in the world at the moment Christmas offers us an opportunity to remember those simple things which bring us joy and peace. War, price shocks, uncertainty in political leadership all threaten our sense of well-being. And yet the timeless charm of Christmas helps us to remember that God is with us at even the toughest times, family gives us security and gifts remind us we are loved.

Our theme this Christmas in the Stroudwater Team of Churches is Gratitude, we feel that gratitude changes our focus, helps us look beyond our difficulties and recognize what we do have that is a blessing to us.

As we give thanks for God choosing to love us and coming into the world let’s recognise that it is often the simple things which bring the most joy. Our gifts don’t need expensive to be to express our love, our food doesn’t need to be lavish to nourish our love, it’s what is in our hearts that is important, and nothing can change that.

We as the churches serving your community are grateful for the opportunities we have to welcome you to our Christmas events this year.

Here are some near you, you can find a more extensive list on our website  
<https://www.stroudwaterchurches.org.uk/>

### Christmas Church Services and Events

10 December	10am-2pm	Christmas Cafe at St Cyr's Stonehouse
11 December	11.15am	9 Lessons and Carols at Eastington Church
	2pm	Cotswold Singers Christmas Concert at St Cyr's Stonehouse
14 December	6pm	Haresfield School Christingle at Haresfield Church
17 December	11am	Carol singing on Stonehouse High Street
	2pm	Blue Christmas Service at St Cyr's Stonehouse
	4pm	Concert at Standish Church
18 December	7.30pm	Cotswold Canal Trust Concert at St Cyr's Stonehouse
Christmas Eve	2pm	Family Crib and Carol Service at St Cyr's Stonehouse
	6pm	Christingle at Eastington Church
	11pm	Midnight Mass at Haresfield Church
Christmas Day	10am	Christmas Communion at Standish Church



Follow The Star  
THE GREAT  
INVITATION

 THE CHURCH OF ENGLAND



### **A Grand Apple Harvest done and New trees to come!**



WE were blessed with a series of bright Saturdays in October, to achieve a bumper harvest.

Pressing days were held at three venues, taking the machinery (and volunteers) to the orchards. We plan a couple more orchards next year for variety.

Parish Apple Day at OHMG was well attended but was the least sunny of our Saturdays.

The results of our efforts were over 500 bottles of pasteurised apple juice, which are shared between the fruit donors, the volunteers and of course the marketable product for the Xmas Fairs.....

And here is Debbie with the first display, at the Village Hall in support of the Craft Xmas Fair. We *almost* sold out!

The Xmas Gift packs on the left were a “show special” but we will be taking more of the smaller ones to the school Xmas Bazaar (9<sup>th</sup> December). They comprise a pair of 500ml bottles of apple juice in a handy jute bag with a gift tag and ribbons.

A different Gift Pack is available from the Eastington Farm Shop, who also sell the large bottles.



### **The money we make buys more trees for the Community Orchards**

This winter we will be planting a dozen trees, mainly in Brownings (behind the Kings Head – handy for the village) and also in Coneygree, near the church and school.

Work party dates will be circulated to members and advertised on Facebook, so come along on a brisk winter's day to learn the right way to plant young trees. Mulled apple juice will be served!

In the next edition of ECN we will be offering dates for people to go on grafting courses, to learn to make new trees. A great opportunity to learn an old skill – grafting dates back to the Babylonians!

**<https://eco.eastington.website/>**



## Eastington Primary School

On Wednesday 16<sup>th</sup> November, Key Stage 2 children travelled to Cheddar Gorge to learn more about the Stone-age.

Here are extracts from Class 3's recounts after their special day.

### Charlie



First, we went to see Stone-age man who was dressed in animal skins. He showed us stone tools and how to make them. He also showed us how to make a fire. It was amazing! **Beatrix**

I learnt about how Stone-age people hunted animals for food and how they scraped the flesh off the skin. **Max W**

Next, we walked to Gough's Cave where we saw a skeleton of Cheddar Man. This skeleton is the

only one that is complete. **Cammari-James**

We looked at replica bones in the cave and found out the real bones can be seen at the British Museum. We also viewed a cave painting of a cow. It was dark and spooky.

### Delilah

It was slippery and very high in Gough's cave. We climbed lots of stairs. **Arthur**

We saw stalactites and stalagmites in the cave. Some were massive! I was felt excited in the caves.

### Charlotte

Our guide told us stalagmites rise up from the floor and stalactites hang down from the roof. Sometimes there were drips of water. It was cool. **Marnie**

Stone-age man allowed us to try on some clothes. They were warm after we put them over our heads. We also sat in a shelter called a 'yurt' where Stone-age people would live together.



Later, we walked to Cox's Cave where there were projections on the walls. Some were

a bit scary with wild animals coming towards the cave. There was also a bear breaking down the roof!

We listened to a commentary and we stood on the sunshine mats to get a good view. **Alice**



In the museum, we saw lots of flint and Stone-age tools. In addition, we saw cave paintings and pottery like we made at school. I had fun! **Rosie**

Finally, we visited the museum where we saw a brown bear skeleton in a glass case. **Harry**



Mila and Jackson showing how strong Stone-age string was by having a tug of war!





**Dear Eastington Community,**

We are very fortunate to have a school field in the village which we use for Sports Day, running club etc. We also hire the field out to a football club, Cotswold Rangers, who provide sporting opportunities for children (this supports the schools finances too).

Unfortunately, the school field cannot be used outside of these school purposes for H&S/public liability reasons – there is signage on the school field gate stating unauthorised access is not allowed.

We have recently been notified by the LA that the boundary fence of the school field has been broken in several areas. Sadly, some of the boundary breaks appear to be quite large and are the result of deliberate action/criminal damage. Unfortunately, we will now have to use school funds to fix the boundary fence.

This is a real challenge for us, as like you, we are facing significant rising costs of electricity and school resources such as books, paper and printing costs.

We want all our school funding to go towards supporting children with their learning and emotional health as they continue to recover from the impact of covid-19 restrictions. Eastington is an exceptionally supportive community.

The children and staff team appreciate the myriad of small and big ways people and organisations within our community help, from a smile, to organising village events, to hard work the parish council undertakes. Please can we ask that you help us by not making any breaks in the school field boundary bigger by using them.

We would really appreciate your help and support in this matter.

With sincere thanks,

Zoe Avastu

Headteacher Eastington Primary School

**Eastington Community Centre**

Owen Harris Memorial Ground



On-line booking now available!!

Visit [www.ohmg.org.uk](http://www.ohmg.org.uk)

**PIANO LESSONS**

Piano lessons in Eastington, face-to-face, or online to anywhere in the world.

Having moved from Aberdeen back to Gloucestershire in 2021 I am still teaching several of my pupils from there – several of whom are taking exams in December.



All ages and abilities catered for  
Take exams or play just for fun

**Contact:**

Elizabeth-Anne Ponting **079 1001 6565**  
[elizabeth-anne@aberdeenpiano.co.uk](mailto:elizabeth-anne@aberdeenpiano.co.uk)

## Crumbled Top Mince Pies

Shortcrust pastry mincemeat pies with a twist - an extra crunchy and fruity/nutty crumble on top.

### Ingredients

For the filling

225g mincemeat

For the pastry and crumble

225g plain flour

100g butter, chilled and cubed roughly

3 tbsp light muscovado sugar

satsuma, grated zest and juice of

2 tbsp flaked almond

1 tbsp stem ginger syrup

icing sugar for dusting

### Method

One

To make the pastry tip the flour into a large bowl and rub in the chilled butter using your fingertips until the mixture resembles coarse breadcrumbs. Stir in the sugar and the satsuma zest.

Two

Spoon out 4 tbsp of the pastry mixture and set aside. Add approximately 4 tbsp of the juice from the satsumas to the main pastry mix to make a fairly soft dough, kneading gently until smooth. Wrap in cling film and chill for 30 mins.

Three

Roll out the pastry to a £1 coin thickness. Using a 9cm cutter, stamp out 12 circles of pastry. Gently press these into individual tartlet tins, the pastry should just protrude above the tins to allow for shrinkage when cooked. Spoon the mincemeat into the pastry cases being careful not to overfill.

Four

Sprinkle the pastry crumble mix over the mincemeat to cover lightly, top with the flaked almonds and drizzle over the stem ginger syrup. At this stage you can cover them with cling film and freeze the whole tray ready for baking.

Five

Heat the oven to 200C/fan 180C/gas 6. Remove the cling film from the tray and bake the mince pies straight from the freezer for 25 mins until golden and cooked through. Cool on a wire rack and serve dusted with icing sugar. Bake unfrozen pies for 18-20 mins.

Many Thanks to Jan Ford



**Do you have a favourite family recipe to share? Please email me.. [articles@eastington.website](mailto:articles@eastington.website)**



Another busy term has come and gone and we are now in full Christmas Swing, practising songs for our Christmas show, repeatedly! Every year the children amaze us with how quickly they pick up new songs and movements and we are always so excited to share these with parents and carers. Christmas is a very exciting time but Christmas around children is even more precious and we are very lucky we get to enjoy the festivities and share in their excitement and wonder in the build up to the big day.

We spent the term enjoying the beautiful Autumn weather, exploring our outside environment, and spending time at our allotment preparing to plant Spring bulbs. The children love spending time outside and enjoy exploring all the natural environment has to offer.

We have spent time discussing fire safety around Bonfire night and practiced 'stop, drop and roll' to extinguish flames. We dressed up for Halloween and had a donation pot where families contributed for their children to dress up all week. The money we raised bought some beautiful wooden toys to explore different occupations, diversity and to encourage discussion about similarities and differences in people and their choices i.e., in food and religions.

We rely on the generosity of our families and the community to raise funds for playgroup for us to buy new resources and experiences to help the children learn in the most exciting and fun ways possible.

We will be holding our next fundraising event on Sunday 4<sup>th</sup> December 11am- 2pm at the Owen Harris Memorial Ground. Our Festive fun run and fete is open to everyone, you are invited to run or walk dressed in your festive clothes and children can participate in the obstacle course to achieve a medal and then everyone can warm up inside with hot chocolate, mulled wine and other festive treats whilst having a go on our festive stalls.



**We have spaces for September 2023 so please get in contact if you require a place.**

**It is never too early to register your child for a place, please email [eastingtonplaygroup@hotmail.com](mailto:eastingtonplaygroup@hotmail.com) for a registration form or 07977342742 to book a visit.**





## Church of Christ the King Eastington .

Some of you may have noticed the For Sale notice outside the church. We do not own the building (yet) and are having to rent it from the Gloucestershire Circuit of the Methodist Church. The Circuit has been told it has to market the property to establish a market value and that is what is happening at the moment. Our hope is that there will be little interest as it only has planning permission essentially for its current use and getting planning permission for a change of use from Stroud District Council looks like it would be extremely difficult.

Purchasing the property and ideally carrying out a major upgrade will be expensive but it looks like some grants may be available. If anyone or any organisation would like to help us, we would be pleased to hear from you.

### CHRISTMAS


*"For to us a child is born, to us a son is given, and the government will be on his shoulders. And he will be called Wonderful Counsellor, Mighty God, Everlasting Father, Prince of Peace. Of the greatness of his government and peace there will be no end. He will reign on David's throne and over his kingdom, establishing and upholding it with justice and righteousness from that time on and forever."* Isaiah 9: 6-7 (NIV)

This well-known passage was written hundreds of years before Jesus was born and is just one of many foretelling the coming of Christ on the very first Christmas Day. We are doing our bit to celebrate Christ's birth through a number of services and events.

Carols at the Café will be on Sunday 11<sup>th</sup> December at 11am and is suitable for all ages. Free drinks and cakes will be provided. There will be more carols at the following Sunday service on the 18<sup>th</sup> followed by mince pies.

A Messy Christmas event is planned starting at 10:30am until noon on Saturday 17<sup>th</sup> December (i.e. it finishes well before the football starts!). For anyone who has not been to one before, this comprises of a number of activities, including crafts, a talk/video session and then refreshments. It is ideal for children and families but suitable for anyone.

On Christmas Day we have a celebration service suitable for all ages at 10:30am and all are very welcome.



# Carols at the Café


**at 11am on Sunday 11<sup>th</sup> December**

## Messy Christmas

A free invitation to join us at 10:30am - noon on Saturday 17<sup>th</sup> December

## Carols & Mince Pies

at 11am on Sunday 18<sup>th</sup> December  
**ALL WELCOME**



# Christmas Day 10:30am

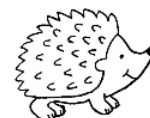


With the exception of the Sunday services, the weekly meetings are expected to pause for the week before Christmas and the week between Christmas and the New Year. However, we are expecting to run the Youth Club on Friday 23<sup>rd</sup> December but not on the 30<sup>th</sup>. January is still a little way off but we expect the regular weekly activities to resume from Tuesday 3<sup>rd</sup>.

Church Main Activities (please check the website for details)	
Baby & Toddler Group	Mondays 10:00 – 11:30am
Prayer Meetings using Zoom:	Tuesdays & Fridays 8:30 – 9:00am
Lunchtime Bible Study (includes a light lunch)	Thursdays 1:00 – 2:30pm
Youth Club (11-18)	Fridays 7:00 – 9:00pm
Sundays at 11am:	Café Church (all ages together) Sunday Dec 11th, Jan 8th
	Morning Services (refreshments afterwards) The other Sundays

If you'd like to know more; or you'd just like someone to talk to; or if we can help in any way; give us a call.  
**Ken & Beck Burgin 01453 827414 or 07511197265 or email: [info@CoCtKE.org.uk](mailto:info@CoCtKE.org.uk)**  
**[www. CoCtKE.org.uk](http://www.CoCtKE.org.uk)**

## Wild Hogs Hedgehog Rescue



### Emergencies

If you have a concern about a hedgehog you have found, please **call us on 07949 976717** as we may not pick up your email straight away. Please leave a phone message and we will call you back as soon as we are able. Our messages are checked regularly between 8am and 6pm. **PLEASE DO NOT JUST TURN UP AT THE RESCUE AS IT IS NOT MANNED 24 HOURS A DAY.** Please follow the advice on our website to care for a hedgehog until we return your call.

### Other enquiries

Please email [emilyatwildhogs@gmail.com](mailto:emilyatwildhogs@gmail.com) Our priority is to care for the hedgehogs and we will respond to emails when we are able to do so. This may take longer than usual at busy time, so thank you for your patience. We aim to do updates on hedgehogs weekly.

### Frequently Asked Questions

**When does a hedgehog need to come into rescue?** Please see guidelines on our website  
**[www.wildhogshedgehogrescue.org.uk](http://www.wildhogshedgehogrescue.org.uk).**

**How can I help support Wild Hogs Hedgehog Rescue?** As a registered charity run solely by volunteers, we rely on donations to be able to continue helping wild hedgehogs. Donations can sent via PayPal or you could donate an item from our Amazon wish list. Detail are on the website

**Can I adopt / rehome a hedgehog from you?** No. We always aim to release a hedgehog back to where it was found. If this is not possible, we will only release a hedgehog back to an area where we have records of a known existing population.

**Can I just turn up at Wild Hogs Hedgehog Rescue?** No. The rescue is not manned at all times so please call us to arrange a day and time to bring a casualty in.

**Can I visit Wild Hogs Hedgehog Rescue?** We do not offer visits for individuals or small groups. We hold events for "Friends of Wild Hogs" and we open the rescue to tours at our open days; please follow us on **Facebook** to keep up to date with our events. <https://en-gb.facebook.com/Hodgehegs/>



EXCELLENT  
REVIEWS

## Luxury Care Home Community

**The Hollies Nursing Care Home   Holly Oak Dementia Care Home   Apartments by the Hollies**

The **Hollies**, renowned for its excellence in nursing, dementia and residential care provides the ultimate in state-of-the-art accommodation. Spacious, beautifully designed rooms, suites and living areas along with pretty gardens provide residents with a high quality of living. Exceptional dining caters for the most discerning preferences and needs.

The all new **Bessys Tea Room** for a cream tea or special event, **The Old English Pub** for a favourite drink and cosy lounges create the social heart beat for residents, families and friends. Come and be treated at Bessys Tea Room, call to book now on 01453 541400.

At the Hollies, care is not just something we offer, it's at the core of who we are. We treat every resident as an individual and work hard to tailor our person-centred services and activities to support their every need.

the gold standards  
framework

**Bessys**  
TEA ROOM

**Kayes**  
HAIR & NAILS

THE OLD  
ENGLISH PUB

We welcome immediate and planned admissions.

Call **01453 541400** • Email **info@thehollies.co.uk**  
**thehollies.co.uk** • Drake Lane, Dursley GL11 5HA



**Hollies**



# Kids Stuff

## Christmas Word Search

C	P	Z	S	A	N	T	A	V	I
A	H	P	K	T	J	R	N	E	G
N	G	R	T	L	A	Q	G	W	I
D	B	A	I	P	Y	R	E	L	F
L	C	V	N	S	V	J	L	O	T
E	S	O	S	R	T	B	U	L	Y
X	M	N	E	G	N	M	Z	R	K
H	O	L	L	Y	K	U	A	I	Q
F	K	B	W	Z	G	J	M	S	Y
B	Q	G	P	U	D	D	I	N	G

CHRISTMAS HOLLY ANGEL TINSEL PUDDING  
ELF STAR SANTA GIFT CANDLE



By Oliver and Tom

### Christmas Cracker Jokes

Why was the turkey in the pop group?

– Because he was the only one with drumsticks!

Why was the snowman looking through the carrots?

– He was picking his nose

Who hides in the bakery at Christmas

– The Mince Spy

### Christmas Around the World!

**France** - On Christmas Eve, children put their polished shoes out in front of the chimney for Pere Noel (Father Christmas). He leaves sweets inside the shoes.

**Italy** - Children are handed gifts by Babbo Natale (Father Christmas) on Christmas Day. However, many families exchange gifts on January 6th. This is known as the Day of Epiphany.

**Germany** - German homes are often decorated with fairy lights and festive ornaments. However, the Christmas tree is usually only put up and decorated on the morning of Christmas Eve.

**Poland** - Adults will exchange gifts with each other on Christmas Eve. Children will receive presents at the start of the month on 6th Dec (St Nicholas) Day.

### A Christmas Quiz

1. Santa has 9 reindeer can you name them?
2. In which country is Father Christmas called Pere Noel?
3. In 1847 what did Tom Smith, a London confectioner, invent?
4. Which creature created by Dr. Suess tried to steal Christmas?
5. What special name is given to the day after Christmas Day?
6. In the song The Twelve Days of Christmas, what bird was in a pear tree?
7. Which fruit starting with the letter 't' is traditionally put inside a Christmas stocking?
8. Gingerbread houses are popular at Christmas - which fairy tale inspired them?
9. Which Victorian author wrote the novel A Christmas Carol?

Answers on page 24.



## Eastington Parish Council

### NEEDS YOU!

Are you aged 18 years old or over? Lived or worked in the Eastington Parish for over a year or are you on the register of local government electors for the parish? Do you want to make a difference to your community? Then why not consider becoming a parish councillor?

#### What do councillors do?

Local councillors are the heroes of their community, investing their time in local projects and issues for the benefit of residents, local groups and businesses within the Parish. Their aim is to help keep your Parish a great place to live and work with each councillor bringing their individual backgrounds, skills and life/work experience to the Parish Council to enable a good and balanced representation of the parish.

Responsibilities include (but not limited to):

- employing contractors for the maintenance and upkeep of various facilities, for instance Snakey Park, the Churchyard, and the Burial ground.
- ensuring grit bins are full, ordering and arranging the installation of rubbish bins, benches, kissing gates.
- raising issues with the local roads and public rights of way with Stroud District Council and Highways.
- input into the Neighbourhood Development Plan and comment on planning applications.
- identifying issues and representing views of the residents to bring about improvements to the parish.

#### How much time does it take up?

We meet on the second Thursday of the month at 7pm in the Eastington Village Hall at the top of Spring Hill. The meeting is usually finished by 9pm. In addition, councillors may be asked to attend 'ad hoc' meetings, for example with the Great Oldbury architects to discuss the new sports facilities or with developers for any large planning applications in the pipeline.

Councillors are volunteers although they may claim expenses as necessary and are provided training for their roles. Once elected you can sit on the Parish Council for four years, if you wish to serve for longer you may stand for re-election. Alternatively, if you decide that the role is not for you, or you are no longer able to commit, you are free to resign.

If you are interested in the life of your hamlet, village, parish, local environment, recreational facilities, local transport, planning and housing issues then **WE NEED YOU!**

Please contact the Parish Clerk, Marianne, for a Co-option and Eligibility Application Form

either by telephone on **01453 799616**

or by email at **clerk@eastington-pc.gov.uk**



## Eastington Parish Council News

Over the summer, two long-standing Councillors, Ali Loveridge and Alex Bomberg stood down from the council. The parish council would like to thank them for their commitment to the council over many years and the valuable contribution they both made. There are now currently 3 councillor vacancies on the parish council and the council would urge anyone interested in becoming a councillor to contact the Clerk via email or phone. Further information on becoming a councillor is given on Page 20.

All parish council meetings are held on the second Thursday of the month and start at 7:00pm in the Village Hall. All parishioners are welcome to attend, and a period is set aside at the start of the meeting where residents can raise any issues or concerns.

Now that the country is returning to normality following the Covid19 pandemic the council is looking to improve the sense of community and wellbeing within the village. We are installing benches in various parts of the village to provide resting places for those getting out and about and enjoying the outdoors. We are also working on improving some of the paths and roads in the parish, including the Burial ground path and the Snakey Lane track, so you may see some work on these over the next couple of months. We will try to keep any inconvenience during the works to a minimum.

Marianne Simpson

Eastington Parish Council Clerk

[clerk@eastington-pc.gov.uk](mailto:clerk@eastington-pc.gov.uk)




**Now hiring**  
**Positions available**

- ➔ Skilled groundworkers in the South-West of England and South Wales
- ➔ Class 2 drivers (sweepers, tippers and RCV)
- ➔ Administrators in Tewkesbury and Gloucester
- ➔ HGV Mechanic and Plant fitter based at Head office GL10 3AQ
- ➔ Asbestos removal operatives and Demolition labourers in the South-West
- ➔ Plant Operators (Gloucestershire) and Plant Hire desk Controller - Head office

**As good as our word, as strong as our name.**





### SEVERNSIDE OSTEOPATHIC PRACTICE

*Help for when it hurts*



#### Registered Osteopath in Saul

Osteopathy is not only for neck and back pain but for so much more.....

- ❖ Help for aches, pains and stiffness
- ❖ Help for when you are unwell and unsure
- ❖ Sports injuries
- ❖ Women's health - before and after pregnancy
- ❖ Children with growth and postural problems

Off road parking and partial disability access available  
Member of The Allied Health Professions



**Caroline Tosh** DO MSc FSCCO

**T: 01452 740818**

**E: [admin@severnsideosteopathy.uk](mailto:admin@severnsideosteopathy.uk)**

**[www.severnsideosteopathy.uk](http://www.severnsideosteopathy.uk)**



## Family Announcements

Let us know about your big day coming up - email [articles@eastington.website](mailto:articles@eastington.website)

### Birthdays in December/January

Jim Crowther

Amanda Snell

*A big Happy Birthday to both!*



### A Merry Christmas..

Jen would like to wish her husband Mike a very Happy Christmas.

Andy says 'Merry Christmas to my darling wife Sandra.'

### A request.....

My husband and I live in Westend and recently received a lovely letter from a lady named Joy Clifford. As a child in the 1940's Joy lived in our cottage before moving to Eastington. We would love to reply to Joy's letter but unfortunately she didn't include her address but did mention that she now lives in Devon. If anyone remembers Joy or is related to her and could provide an address please could they contact me.?

Jenny - 07813 932314. [Jennywillsher@yahoo.co.uk](mailto:Jennywillsher@yahoo.co.uk).

### Eastington Village Hall - New Committee Members Needed

Would you like to get more involved in village life? The Village Hall Committee would welcome the help of enthusiastic, practical types, who can help us maintain the Hall and run our schedule of events.

If you are interested, please come along to our Annual General Meeting. It is on Friday 9<sup>th</sup> December in the village hall at 6pm. The committee is elected afresh every year at the AGM – this could be the year for you to join!

If you would like to know more, or discuss it before the AGM, please email [evh@eastington.website](mailto:evh@eastington.website)

Thank you!

### Poppy Appeal

In Eastington and District we raised £1934.83 and there is more on its way – we will be well over £2000 this year. In such challenging times, with so many charities needing support this is an amazing sum.

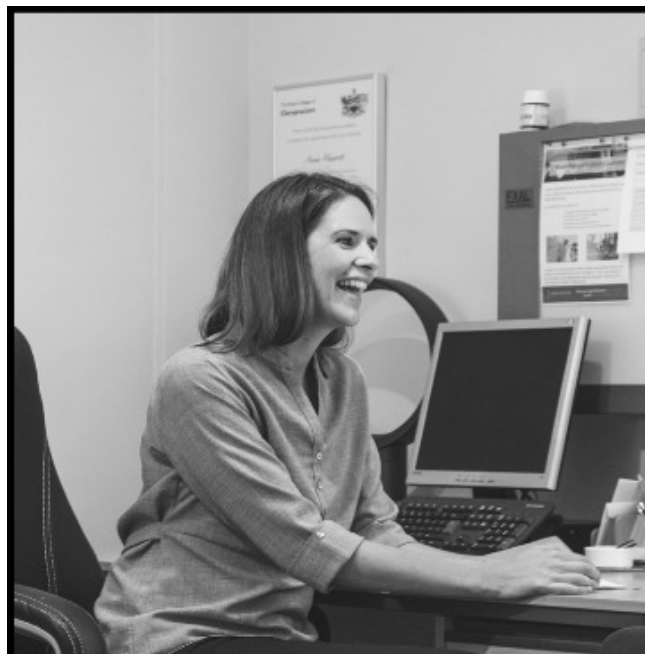
Special thanks are due to our band of 'house to house' collectors, and all the local venues that hosted collection boxes.

If you would like to join us in the house to house collection, or for your venue to have a collecting tin, please email [katgribble@hotmail.com](mailto:katgribble@hotmail.com)

On behalf of the Royal British Legion, thank you!

Kathryn Gribble, Honorary Organiser,  
Eastington and District Poppy Appeal





**Spinavita Chiropractic** has been at the heart of Hardwicke and Quedgeley for over 12 years.

Our dynamic team of Chiropractors, Sports Therapists and Massage Therapists are experienced in getting you mobile, pain free and supporting your overall health and wellbeing.

We hope to welcome you in soon.

[Book an appointment](#)

**01452 883232**

**[www.spinavita.co.uk](http://www.spinavita.co.uk)**

62 Westbourne Drive, Hardwicke,  
Gloucester, GL2 4RU

### Insights at Spinavita Chiropractic

Spinavita Chiropractic is an award winning Chiropractic and Sports Injury Clinic based in Hardwicke and Quedgeley. It was established in 2005 and over the last 17 years has helped support over 5000 people in the surrounding areas.

We understand that everyone experiences pain and injury differently. Living with pain can put your life on hold, restrict your movement and affect your mental wellbeing. Our team of experienced Chiropractors and Sports Therapists work closely with you to identify the problem that is causing your pain. They can then create bespoke treatment plans which aim to get you out of pain, reach your goals and optimise your performance.

Although Chiropractors are best known for treating back and neck pain, they can also manage a wide range of other musculoskeletal conditions including generalised joint pain such as osteoarthritis and sports related injuries. We offer a variety of different treatments which include massage, joint mobilisations, exercise rehabilitation and laser therapy.

Our doors are open six days a week between 8am-7pm Monday to Thursday, 8am-6pm Friday and 8am-12:30pm Saturdays. With free onsite parking, it couldn't be easier to see one of our team!

If you've been suffering for days, weeks, months or years, our highly trained team are on hand to help. Give us a call on **01452 883232** to book an appointment or to discuss if treatment would be right for you.



## Warnings to Residents – On-line Shopping Fraud

Gloucestershire Police are warning residents of a recent increase in online shopping fraud, with **19** reports made to Action Fraud last week by local residents. The most common platform featured within the complaints was Facebook Marketplace.

### *What is a scam on Facebook Marketplace?*

Scams can happen to a buyer or seller. Scams come in different forms, so it's important to know what to look for.

**Buyer scam:** When someone tries to obtain items from a seller without paying. Recent reports have featured purported buyers using fake banking apps and spoofed email messages from banks, to trick the seller into believing that funds have been sent. The seller then sends the item only to find later that they haven't received any payment.

**Seller scam: Advertising items for sale which are never sent to the buyer.** Seller scams often lure buyers into conducting transactions outside of the trading platform and / or to transfer funds as a "deposit", in advance of the item being sent. The seller profile is then removed, and the buyer is left out-of-pocket.

*Please help us raise awareness of this scam by informing your elderly or vulnerable relatives, friends and neighbours.*

*Please see below some hints and tips to help keep you safe when shopping online.*

- ☐ Double check any deals that seem too good to be true – scammers may use lower prices to lure buyers into a scam. Look at similar items advertised for sale
- ☐ Review the sellers profile to check out their ratings and reviews
- ☐ Never send items before you have received verified payment
- ☐ Always check that the money has arrived and is cleared in your account and that it is not still 'awaiting confirmation'
- ☐ Do not use unusual payment methods – only use Facebook Checkout, PayPal or cash when using Facebook Marketplace
- ☐ If a buyer becomes pushy, aggressive or makes you feel uncomfortable, don't be afraid to block them and report them to Facebook
- ☐ Don't give away personal information and if you need to provide your address for a buyer to collect an item, only do so once you are confident they have committed to buy it
- ☐ If you meet-up in person with any purchaser on Facebook, think of your own safety – meet in a well-lit, public place and try to have a family member or friend accompany you
- ☐ If anything doesn't feel right about an online sale, cancel it
- ☐ Keep your devices up to date – make sure you install the latest software and app updates
- ☐ Take extra care with links in messages, emails and texts - Some of the messages you receive about amazing offers may contain links to fake websites, designed to steal your money and personal details. Not all links are bad, but if you are unsure don't use the link, go separately to the website.

### *What to do when things go wrong*

We all make mistakes and these days the scams can be incredibly convincing.

If you have fallen victim to fraud, you should report the details to [Action Fraud](#) and contact your bank to seek advice.

You can contact Action Fraud on the phone by calling **0300 123 2040** Monday to Friday 8am - 8pm. If you are deaf or hard of hearing you can contact us on use text phone **0300 123 2050**

For more information on safe online shopping, visit the Gloucestershire Constabulary Website - [Online shopping | Gloucestershire Constabulary](#) .



**If you have enough to share,  
please remember others in these difficult times**



### **What is a food bank? How does it work?**

Food and other essentials like toiletries are donated at various collection points ( see below). These are collected, sorted, stored and organised by a team of volunteers based at the warehouse in Brimscombe. There are 3 paid part time staff , over 150 regular volunteers and a further large team of volunteers involved with collections.

People in need can be referred to the foodbank by any of the caring agencies - these include Citizens Advice, P3, Stroud District Council housing support officers, children's centres, health visitors and social services as well as local schools and doctor's surgeries. Clients will receive a food bank voucher - typically for a parcel of three days worth of food and emergency supplies. Each client will also be supported by a volunteer who can help direct them to other sources of help that may be available, according to specific needs.

### **How can I help?**

Donations of (non-perishable!) food and household essentials are always needed.

**There is a collection basket at the back of St Michael's Church**, and this is taken weekly to Brimscombe.

Donations can be made directly to the Warehouse at Unit 19, Canal Iron Works, Hope Mills Lane, Brimscombe, Stroud, GL5 2SH between 10-12 or 14-16 Mon-Friday. There are also collection points in Stroud Tescos and Sainsburys. All donations are gratefully received, but of particular need at present are tinned meat and fish, cooking oil and cleaning/washing materials.

If you might like to become a volunteer, or for any other enquires, you can contact Stroud Foodbank on 01453 367077 - more information is available on the website and on Twitter

**<http://strouddistrict.foodbank.org.uk> and [https://twitter.com/SD\\_foodbank](https://twitter.com/SD_foodbank)**

Stroud District Food bank is a registered charity (no 1176306) managed by a board of volunteer trustees. It is a member of the Trussell Trust network of foodbanks. <https://www.trusselltrust.org>



## FRAMPTON VILLAGE SOCIETY TALKS

A warm welcome is extended to everyone to come to our series of illustrated talks held in Frampton on Severn which we hope will be of interest to a variety of people; the talks cover both local topics of interest, more general subjects and sometimes a musical or other theme-based show.

The talks are normally on Friday evenings starting at 7.30pm in our Village Hall and are organised by Frampton on Severn Village Society, which raises funds for various village projects – please refer to the full programme and dates at the end of this article.

You need not be a member of the Society to attend talks and the cost is £4.00 per person, but entrance is cheaper for members and tea/coffee plus biscuits are provided for all!

Should you be interested in becoming a member, please contact Kelvin Broad on 01452 740775 or [kelvinsbroad@btinternet.com](mailto:kelvinsbroad@btinternet.com)

### Talk report

Tony Condor visited us again for our October meeting, explaining the various diaries kept by people in Gloucestershire over the ages. These were generally written by the more wealthy and therefore educated in the County, but gave fascinating insights into all walks of life including their own rather privileged positions.

There are over 1,000 such documents kept at the archives in Gloucester and Tony has been researching these, one of the earliest referring to a paper mill in 1490; this must have been one of the first paper mills in the country as in earlier times any written records would have been on parchment, wood or stone.

In 1654 John Evelyn wrote a comprehensive diary (prior to Samuel Pepys!) describing Gloucester castle which was subsequently destroyed in the Civil War.

Many of the 1700's diaries referred to the awful conditions in local towns and especially the awful Gloucester-Cheltenham road, tolls and excessive alcohol consumption. In the 1788 cider harvest labourers were paid in cider, not money – each got some 2 gallons/day!

Bristol was mentioned several times as being a large city and port, also referring to the slave trade and John Wesley's sermons against it. This was also a time of serious rioting against 'industrialisation' and loss of cottage-based work, with many being sent to jail.

In 1822 William Corbet wrote of the Arlingham peninsula: 'fine farms, with many girls working in good clothes'

During the 1900's several diarists covered the lifestyles of the richer families – their extravagant Balls, clothes, food, hunting, shooting and fishing. There are also sombre accounts of events with lives lost and day-to-day living during both World Wars and the sounds of German bombing locally.

### Confirmed Programme for 2023

27<sup>th</sup> January: Edward Jenner, a man who changed the face of the world – Prof Gareth Williams

24<sup>th</sup> February: Back Street Bronze Casting; Don't Try this at Home! – John Huggins

24<sup>th</sup> March: Tales of a Country Auctioneer – Philip Taubenheim

28<sup>th</sup> April: A Year in the Life of a Wildlife Photographer – Phillip Mugridge

26<sup>th</sup> May: The Art of the Magician – Tony Griffith

23<sup>rd</sup> June: Sweeps to Slaves: Working Children in the Past – Prof Jenny Tann

August: Visit to be planned

22<sup>nd</sup> September: The Wit and Songs of Noel Coward – Peter Gill

24<sup>th</sup> November: 21<sup>st</sup> Century Frampton Flora, Part 2 – Joy Greenwood

2<sup>nd</sup> December: Christmas Dinner – to be planned



Christmas Quiz Answers:- 1. Rudolph, Prancer, Comet, Blitzen, Dancer, Vixen, Dasher, Cupid, Donner  
2. France 3. Cracker 4. The Grinch 5. Boxing Day 6. Partridge 7. Tangerine 8. Hansel and Gretel  
9. Charles Dickens