

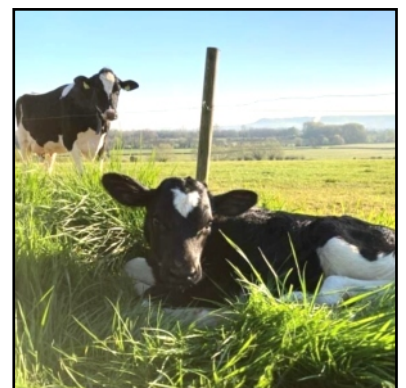


Eastington Community News

edition
197

<https://ecn.eastington.website>

April 2023-May 2023



Eastington Community News
Love Eastington

Celebrating Community
in Eastington



PRESS RELEASE

15 March 2023

Wotton Friends of Longfield disband after 34 years, having raised £457,000

After 34 years, the volunteer-led supporter group, Wotton Friends of Longfield, made the decision to disband in December 2022, having raised £457,000 for the Minchinhampton-based hospice.



The group was originally set up by Jackie Sims, after her mother died from breast cancer in May 1987. Her mother's MacMillan nurse, Helen Hutchinson, asked Jackie if she would consider forming a support group for the hospice she hoped to set up in South Gloucestershire. This became Longfield Community Hospice and it continues to offer free care for adults with a life-limiting condition across Gloucestershire and support for their families and carers too.

The first meeting of the group was held on 15 March 1988. Jackie Sims, Joan Deveney, Adele Stockbridge, Irene Wilson, Joan Derham and Lesley Holland were among the founder members of the group which went on to raise a staggering £457,000 through a series of fundraising events. In addition to waitressing for various local Freemasonry lodges events, the group held regular fashion shows, fairs, coffee mornings and open gardens, and acted as important ambassadors for the hospice.

Twelve members of the group, including four founder members, attended a special event at the hospice on 24 February and were presented with certificates of appreciation and a glass heart ornament, by the hospice's CEO, Simon Bernstein.

Tricia Henderson-Ross, former Chair and winner of the 'Charity Fundraiser Award' at the Pride of the Cotswolds Awards in 2019, now volunteers at the hospice once a week. She said:

"We were all friends who enjoyed each others' company and coming together to raise money for such a valuable local charity seemed like a wonderful idea. Not only have we seen great progress at the hospice, but we've also had lots of fun over the years, and have some lovely memories to look back on."

Head of Fundraising and Marketing, Louise Cook, said:

"We were delighted to invite twelve Wotton Friends to the hospice to thank them for their phenomenal commitment. To fund raise for over 30 years is such an achievement, and to raise £457,000 is simply amazing!

We're lucky at Longfield to have so many loyal volunteers, but we're always looking for more. At the moment, we have several volunteering opportunities at our new warehouse in Thrupp from helping in the warehouse to driving a van. Do get in touch if you'd like to find out more. It's a fantastic way to support your local hospice."

For more information on volunteering, visit www.longfield.org.uk or telephone 01453 886868.

Find out more about your local hospice and how we help at www.longfield.org.uk.

Twitter: @longfieldcare

Facebook: @LongfieldHospice

Instagram: @longfield_care

Your news.....your ECN!

Written by You, Produced by Sue Halas and delivered by many!

Dear Readers,

Welcome to our bumper size SPRING edition of the ECN. I have put together an amazing collection of articles and photographs for you to enjoy.

Fingers crossed for a little bit of spring sunshine after the late snow and many, many days of rain!

Many thanks to all our contributors for all the articles! Keep them coming!

Please email everything to articles@eastington.website

Best Wishes & Thank You

Sue Halas, Editor

Jan Low, Technical Support

Gill Glover, Distribution Manager



Inside this issue...

Community 2 ECO 6 Eastington Playgroup 8 Eastington Primary School 11 Craft and Chat 11 Severnside Singers 12 Church of Christ the King Eastington 16 Parish Council 20 StroudWater Team of Churches 24 Rotary in the Vale	Articles 4 The Frocester to Frampton-on-Severn Mineral Railway 10 Eastington Memories 17 Local Celebrity 18 Household Menace	Charities Back Cover Stroll for Sunflowers Front Cover Longfields What's On 3 Yard Sale 14 Women's Institute
Advice and Support 15 Spinavita Chiropractic	Back Cover Frampton Talks	Regular Features 7 Gardening News 14 Seasonal Recipe 19 Eastington Farm Shop 23 Kids Stuff

Deadline for next issue : Monday 22nd May 2023

(For delivery around 1st June 2023)

Please email your articles, stories, photos and events to articles@eastington.website
or, for ads please use advertising@eastington.website

Space is limited - we may omit, edit or shorten articles. Views expressed in ECN are not necessarily those of the editors.

See it in colour : visit the Eastington Hub at <https://eastington.website>



Serious work and learning new skills at Coneygree Orchard



Apple Juice sales of over £1,000 gross in 2022 allowed us to buy 12 new trees. We planted 5 of them at Coneygree, as described by David Aston in his musings.

Pride of place goes to Pershore Egg Plum, planted in the island formed by the paths to the pond by Caroline and Graham.

As a welcome to the Orchard, close to the southern gate (Churchend) starting at 8 feet after two years, can you believe it will provide a large spreading mature tree by 2030.

Musings on Time Spent in the Community Orchard.

If not for the fruit trees, where would you be???

That may sound a rather silly and irrelevant question to ask, but when you think about it, the apple, pear and plum trees we have in our two village community orchards, are perhaps the only reason many of us would bother to get out of bed at the weekend.

A dozen of us ventured out last Saturday morning to the Eastington Community Orchard, which sits between the graveyard and the entrance to Eastington Park, to have a go at planting some new trees and pruning one or two of their much older "siblings".

But for me, the exercise is much more about community bonding and getting to know just who knows what about this and that and catching-up on the comings and goings of our wonderful village.

If you are anything like me, you really don't need to do that much either if you don't want to, just stand around, offer to eat some of the biscuits or cakes which someone is bound to offer you and drink a few cups of fruit juice, mulled wine or even your own tea and coffee.

In fact it worked brilliantly this weekend for big and small villagers alike, with young pre-school types (admittedly with a grandparent) through to some as old, if not even a bit older than me, finding things to do and enjoy. And just in case you were wondering, I'm well old enough to know that Paul McCartney was indeed in another pop group before joining Wings!!!!

Everyone is most welcome to come along whenever the next working party is held and there will be many others scheduled soon, for Saturday mornings normally between 10.00 - 12.00 in either the Coneygree Orchard near the church or indeed in the much newer of our two community orchards behind the Kings Head Hotel, which we've named Browning's Orchard.

Please just look out for the date of the next working party on Facebook and we'd love to see you.

Because if it wasn't for the fruit trees, where would you be???

In my case perhaps, sat at home, wishing there was somewhere just around the corner, where you can meet up with similar minded folk and neighbours and people who can be counted upon to offer you a very warm welcome, folk who would be prepared to show you what happens in the orchard and how you could perhaps get some similar fruit trees going in your own garden or field and thus help protect and preserve biodiversity in our wonderful village for the future.

Springtime is also Pruning time.

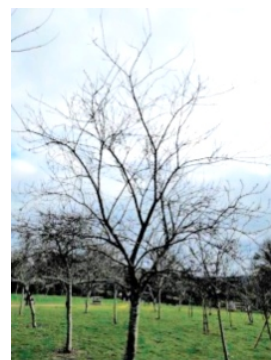
Sadly COVID lockdowns allowed some trees to grow randomly, in some cases producing multiple criss-cross branches. We have been quite severe in pruning this year to correct their basic shape. This seems cruel but is necessary for the longer life of trees.

Remember that these are still young trees with a 40-50 year life, so corrective work now will pay handsomely in terms of good structure and top quality fruit bearing for four decades.

This is a correctly pruned tree with an open heart and not too much upward growth. Before pruning, this was similar to the previous example.

Well done Richard who had to saw off some large limbs to achieve this outcome without resorting to a chain saw. It also requires conviction and nerve!

If you would like to benefit from exercise in the fresh air occasionally, please contact me , Tom, on 01453 823425



A Date for your Diary

Sunday 16th April 11am - 2pm

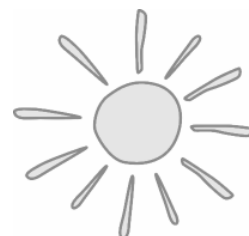
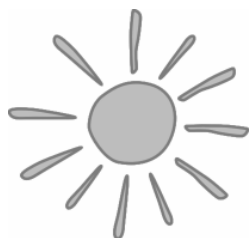
Eastington Yard Sale

Register now to appear on the map for the yard sale.

Cost £6.00 - all proceeds to Eastington Church

To register and for further information email -

Eastingtonyardsale@gmail.com



The Frocester to Frampton-on-Severn Mineral Railway

By Stephen Mills

Many of us will have recently been made aware of plans by Novus and Innova to develop a large solar farm between Frocester and Eastington. This includes a solar array of photovoltaic panels that will cover approximately 223 acres of what is presently mainly open farmland plus a few wooded areas.

At first glance, there do not appear to be any visible features of historical note, although on closer inspection, it seems that the development may be on top of a section of the route of a former mineral railway line that once ran between Frocester station and gravel pits at Frampton-on-Severn. Although little remains of this enterprise, it seemed to be good opportunity to delve into its history.



Frocester station, designed by IK Brunel, opened in 1844 and closed in 1961

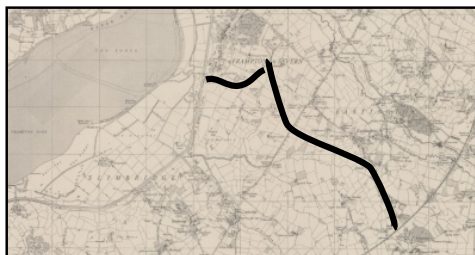
Sometimes known as the *Ballast Pit Branch*, it ran for a couple of miles from the Midland Railway station at Frocester. It crossed through open fields on the edge of Eastington, before traversing the A38 Gloucester-Bristol road between Claypits and Cambridge via a level crossing, finally making its way to the extensive gravel pits at Frampton-on-Severn. Sand, clay, and gravel had been extracted in this area for at least several centuries, although it was mainly the gravel that led to the line's creation.

Gravel had been extracted as far back as the mid-17th century, but the gravel-pits were significantly extended in the early part of the 20th century – although documentary evidence seems to be lacking, the line was probably built as part of this enlargement process. Local knowledge suggested that it was built by First World War German prisoners-of-war, although this is incorrect as it was opened before this – 1903 has been suggested.

In his memoirs, recorded in 1982 (see ECN 141 and 142), the late Fred Ireland recalled:

During the First World War, I remember seeing German prisoners of war marching from Frocester to Frampton, each wearing a great flat topped service cap.

In Gloucestershire, German POWs worked in shipyards, quarries, and agriculture - around twenty POW camps were opened in the county, although it is not clear where the 'Frampton' prisoners were billeted. They may have been brought by train to Frocester station each day.



What is likely is that some probably helped maintain the line, although most worked extracting gravel. In the final year of the First World War, a detachment of the Royal Defence Corp was stationed near the gravel pits, along with several hundred German POWs. Doubtless many of the latter found this occupation preferable to life on the Western Front.

Map showing the route of the line from Frocester to Frampton (courtesy OS)

Gravel was transported along the branch railway to the main line at Frocester, and also shipped along the Gloucester-Sharpsness Canal, being moved along a rail spur and loaded into barges at The Splatt, south of Frampton. Large quantities were transported to Avonmouth Docks and Chepstow dockyard during their construction. The Chepstow dockyard was greatly enlarged during the First World War, with grandiose plans to build multiple modularised ships of up to 3000 tonnes, needed to replace losses caused by German U-boats.

At the Frampton end of the rail line, there were a number of short rail sidings, as well as lines that were sometimes moved closer to the gravel deposit being worked. There was an engine shed for the locomotive, and several storage buildings (Figure 4), as well as some form of conveyor system, possibly used for loading gravel into rail wagons. No less than seven different small steam locomotives were employed during the mineral railway's lifetime. Final photo shows a Manning Wardle 0-4-0 close to the road to Frampton (The Perryway) in 1905.

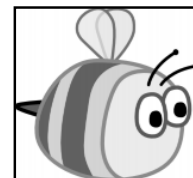


Some of the workers, possibly pre-WW I as no German POWs

Gravel extraction is thought to have ended by 1923, with the lines and the A38 level crossing removed within a few years. Apart from a few traces of earthworks that carried the track, little is now visible. There are, however, a number of what appear to be wooden sleepers submerged in the hedge near the entrance to Park's Farm, where the line crossed the A38. These, plus a few lumps and bumps in the landscape may be all that remains of this generally forgotten and largely undocumented, once-important local enterprise.



The Manning Wardle locomotive and a rake of wagons.



As we approach the Easter break we reflect on the short but busy term we have had at playgroup. We have enjoyed dressing up as our favourite book characters for book week and exploring the different parts of a book and what they are called. We spent a week looking at different birds we have in our environment and made bird feeders for them, for the children to take home to put

their gardens. We also made binoculars and the children loved using these outside on the field to talk about what they could see.

We were happy to have the mums/grandmas in to celebrate Mothers Day. We spent the week making tasty treats for them and then had them join us for drinks and treats and a play. The children planned the afternoon, down to the activities that were available, and even the song we chose to dance to, to begin our afternoon which was the Macarena!

Thank you to all who came.



in



Please join us and Eastington school on Sunday 2nd April for Eastington Egg hunt. Follow the trail around the village to find the eggs and letters to make up a phrase. All monies raised go to school and playgroup for much needed resources to support education and learning.

We have spaces for January 2024 so please get in contact if you require a place. It is never too early to register your child for a place, please email eastingtonplaygroup@hotmail.com for a registration form or 07977342742 to book a visit.





Refresh your garden borders

Spring is here and I don't know about you but I am so enjoying seeing the tulips, daffodils and muscari in the garden!



The days are getting longer and we are seeing milder weather, all of which makes a great time to think about the garden.

I am sharing 5 steps you can take to refresh your borders in time for Summer...saving you time and money in the long run!



1. Know your space

Take a note of where the sun rises and sets, where the sunny parts of the garden are and importantly where you have shade. Knowing this will mean you can choose plants that will thrive in the specific conditions of your garden and avoid wasting money.



2. Know your soil

Test the PH of your soil and get your hands in there and understand the texture i.e clay, loam, sand. This is important to understand what plants will work in your garden.



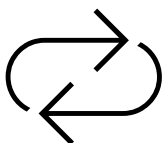
3. Make a plan

Look at where your gaps are. Are you removing plants and need to fill the space, do you have a shaded border that needs improving, have you got interest for every season?



4. Avoid tight borders

Get a tape measure and check the depth of your borders. Anything under 75cm in a mixed border can be difficult to make look full and lead to you feeling a bit underwhelmed. Where you can, be brave an increase to at least 1m in depth.



5. Repetition, repetition, repetition

- Perennials always look best when planted in groups. Going for odd numbers generally looks better on the eye.
- Less is more when it comes to varieties. Increase the number of plants but keep varieties to a smaller number.
- Repeat plants throughout a number of borders in your garden to bring more cohesion.

Are you looking for more inspiration for you garden? Sign up to my monthly newsletter now, via my website below.



www.jhgardendesign.co.uk



[jessica_holcombe_garden_design](https://www.instagram.com/jessica_holcombe_garden_design)



Jessica Holcombe Garden Design

Jessica
Holcombe
Garden Design



Eastington Primary School

WORLD BOOK DAY IN CLASS 1

On Thursday 2nd March we celebrated World Book Day in school. We dressed up as our favourite book characters - everyone looked fabulous!

We shared our favourite books with one another and our 'big' friends from Class 5 – we love reading together! We drew the front covers of our favourite books and took part in a fun quiz about well known children's books as well.



Later we wrote about our favourite book characters....

Here are their thoughts:

Holly – “My favourite book is Room on a Broom because I like it when they get the new broom”.

Agatha – “My favourite book is Toto the Ninja Cat because she saves people”.

Oliver – “My favourite book is Elmer because at the end all the elephants are painted”.

Ivy – “My favourite book is Little Red Riding Hood because she helps Grandma get better”.

Ray – “My favourite book is Ironman because he can fly”.

Freya - “My favourite book is Frozen because I like Elsa's dress”.

Patrick – “My favourite book is a Ninjago fact book because I like the characters”.

Eddie – “My favourite book is Midnight Ninja because I like finding the gizmos”.

George – “My favourite book is Monkey Puzzle because it is set in the jungle”.

Bodhi – “My favourite book is The Usborne book of Dinosaurs because I like the fossils”.

Danni – “My favourite book is Tiddler because he is grey, and I like grey”.

Georgia – “My favourite book is The Little Mermaid because I like Ariel's hair and her tail”.

Seth – “My favourite book is Captain America”.

Harley – “My favourite book is Police Officer George because he has a whistle”.

Millie – “My favourite book is The Gruffalo because he has orange eyes and big footprints”.

Charlie C – “My favourite book is a fact book about Ninjas”.

Safiya – “My favourite book is Angelina Ballerina because I like the dresses”.

Jack – “My favourite book is Spiderman because of his superpowers”.

Jacob – “My favourite book is The Very Hungry Caterpillar”.

Albert – “My favourite book is What Happens While we are Asleep”.

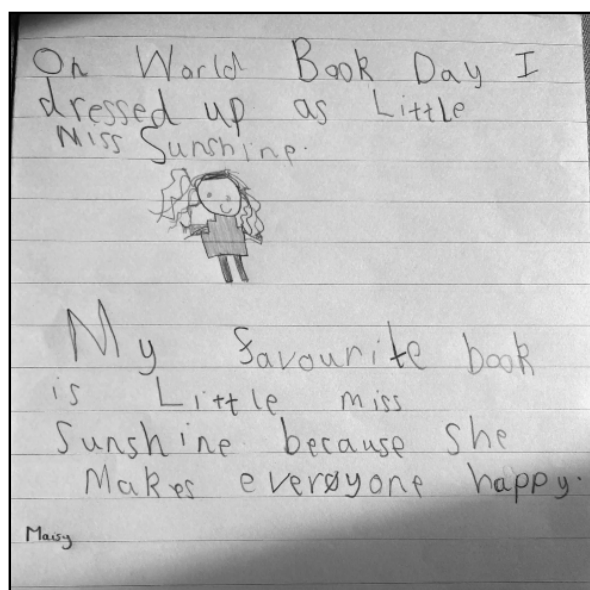
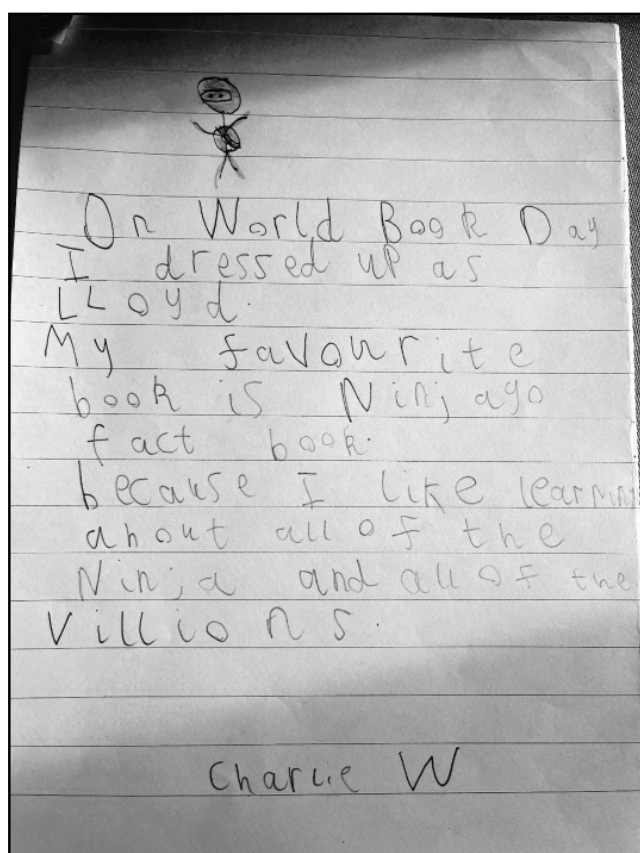
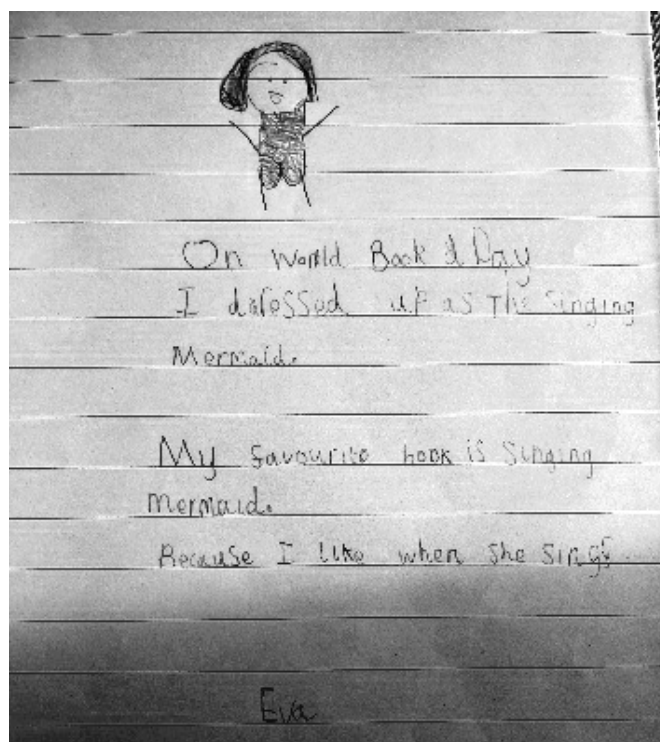
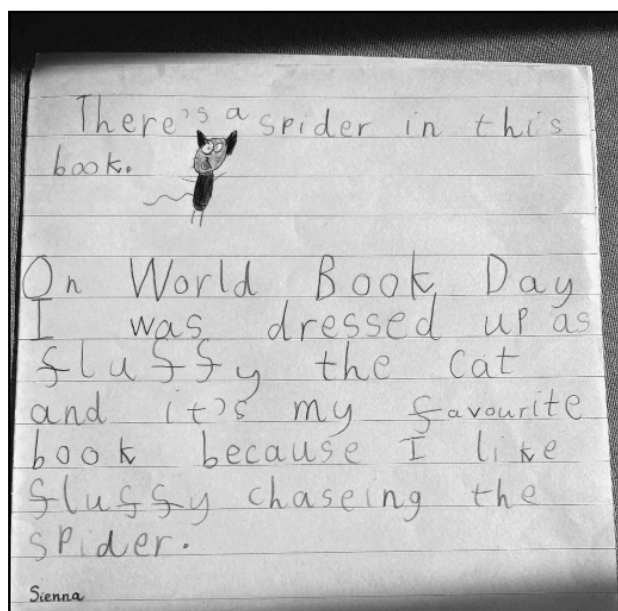
Beau – “My favourite book is Cinderella because I like the sparkle on her dress”.

Olivia – “My favourite book is Even Fairies Need Glasses”.

Lewin – “My favourite book is The Very Hungry Caterpillar”.

Carter – “My favourite book is about the superhero Flash because he is super-fast”.

We enjoyed a special book workshop with Forest School teacher Emma Levan. She read the story 'What the Oak Tree Sees' by A.K Scott and R.M Brink to Class 1. It is a beautifully illustrated book and we liked guessing which woodland animal made the tracks each time.



Eastington Memories



No 1 Eastington AFC 1920/21

No 2 Mr and Mrs Marling and my great aunt who they helped bring up - Herbert in uniform - missing in WW1 - I believe he is on the war memorial.

No 3 Whizz Bangs Concert Party c 1920

No 24 Eastington Horse Show c1937

Many thanks to Megan Timbrell



Craft and Chat



The ladies in our craft group have been really busy recently, I'm so proud of them, We have been making Tiny blankets for the appeal from Cherished Gowns especially for premature babies. I will be sending them off hopefully next weekend 18/19th February. Here is a photo of some of the completed blankets, there are a few more to be added when they are completed. And all this while doing our own projects, drinking tea/coffee biscuits and generally having a really good laugh!

What a fabulous group xx

Craft and Chat meet every Friday morning at the Village Hall.



Over the past 2 months Severnside Singers have been working with a Bristol musician, Judge Singh, producing a song to perform at the Three Choirs Festival this summer in Gloucester Cathedral. The focus this year is a celebration of Ralph Vaughan Williams (RVW), 150 years since his birth. RVW lived in Gloucestershire, was very involved in the Cathedral, the Three Choirs Festival and of course famous for composing 'The Lark Ascending'. This year, the festival's Community Participation event has the theme of 'What the Lark Saw'. So, we have written lyrics describing what a lark might see looking down on our area, from the Severn Bridges to the Cathedral, using the tune of 'The Gloucestershire Wassail'. This song was originally sung to RVW whilst he was collecting folk songs. There are many variations including one sung in 1864 in Over, by a 'troop of wassailers from Minsterworth'.

We will showcase our song in the Cathedral on Wednesday 26th July at 11am alongside various other artistic interpretations on the Festival theme. At the same time, we will be participating in a newly composed Song Cycle by a local composer living in Wanswell, near Berkeley.

By the time you read this we will have had a Singalong concert of 'Songs from the Shows' at Wisma Mulia on 31 March as unfortunately our Christmas concert was cancelled.

We will also be providing some musical entertainment at a Quilt exhibition in the Arkell Centre, Nailsworth on Saturday 27th May at 2.15pm.

As always, anyone interested in singing is very welcome to join us on Thursdays in Frampton Village Hall (except the first Thursday when we meet in the Chapel). No auditions are required so

If you enjoy singing, please come along. We're a very friendly bunch.

For further information contact Pam Greenfield on 01452 740126 or pam.g@btconnect.com



Church of Christ the King Eastington

As Easter approaches, many of us are reminded of new life as spring establishes itself with the promise of warmer weather and winter behind us. Wonderful as this is, it pales in comparison to what God did for us at Easter when Jesus chose to die for us on the cross in Jerusalem to save us from our sins and make it possible for us to be reconciled to God. Jesus did this because he loves us and wants us to know Him and His power in our lives. Note that Jesus chose to do this for us but it is up to us whether we believe and accept this gift of salvation – that is our choice and it is a choice that everyone of us has to make. The Bible makes it clear that eternity with God is not the default option if we do nothing.

Matthew 7 vs 11 – 14 (New International Version) says:

¹¹ If you, then, though you are evil, know how to give good gifts to your children, how much more will your Father in heaven give good gifts to those who ask him! ¹² So in everything, do to others what you would have them do to you, for this sums up the Law and the Prophets. ¹³ "Enter through the narrow gate. For wide is the gate and broad is the road that leads to destruction, and many enter through it. ¹⁴ But small is the gate and narrow the road that leads to life, and only a few find it.

We are here to help you understand the true meaning of Easter and would love to welcome you to any of our services or Bible Studies whether you already believe, are uncertain and are looking for assurance or believe none of it at this time.

**Palm Sunday
Café Church
Sun 2nd April at 11am**



**Church of
Christ the King
Eastington**

**Good Friday
Reflection
7th April at 10:30am**



**All Ages
All Welcome**

**Easter Sunday
Café Church
9th April at 11am He's Alive!**



Building Update:

The process of the Methodist Church selling the church building is nearing being completion. The building/site has not been sold to developers but to an organisation which intends to use it for community activities under its existing planning consent. This is excellent news and even more so in that initial discussions with the new owners suggest strongly that it will be possible for us to continue to meet here going forward. To this end, we expect to carry on using the building for our activities under an interim arrangement until at least June whilst something longer term is put in place. We are sure the new owners will want to share their plans and aspirations with our local community once the sale has definitely gone through and we look forward to working with them.

Youth Club Update:

Ken has been too ill in recent weeks to be able to help out at Youth Club meaning that there have been too few leaders available to run it on Friday evenings. It is not clear when and if Ken will be able to attend again and we could really do with one or two Christian helpers to enable a consistent presence on Friday evenings. The youth attending do not have to be Christians nor do they have to attend church but the ethos of the club is.

Church Main Activities (please check the website for details and variations)		
Baby & Toddler Group		Mondays 10:00 – 11:30am
Prayer Meetings using Zoom:		Tuesdays & Fridays 8:30 – 9:00am
Lunchtime Bible Study (includes a light lunch)		Thursdays 1:00 – 2:30pm
Youth Club (11-18)		Fridays 7:00 – 9:00pm
Sundays at 11am:	Café Church (all ages together)	Sunday April 9 th (Easter Day), May 14 th
	Morning Services (refreshments afterwards)	The other Sundays

If you’d like to know more; or you’d just like someone to talk to; or if we can help in any way; give us a call.

**Ken & Beck Burgin 01453 827414 or 07511197265 or email: info@CoCtKE.org.uk
www.CoCtKE.org.uk**



Now hiring Positions available

- Skilled groundworkers in the South-West of England and South Wales
- Class 2 drivers (sweepers, tippers and RCV)
- Administrators in Tewkesbury and Gloucester
- HGV Mechanic and Plant fitter based at Head office GL30 3AQ
- Asbestos removal operatives and Demolition labourers in the South-West
- Plant Operators (Gloucestershire) and Plant Hire desk Controller - Head office

As good as our word, as strong as our name.



A Seasonal Recipe

Slow-Cooker Lemon-Pepper Chicken Thighs with Broccoli

Ingredients

Ingredient Checklist

- 1 tablespoon black pepper
- 1 tablespoon lemon zest, plus 3 tablespoons fresh juice (from 2 lemons)
- 1 tablespoon chopped fresh oregano
- $\frac{3}{4}$ teaspoon kosher salt
- 8 bone-in, skinless chicken thighs (about 2 pounds)
- $\frac{1}{2}$ cup unsalted chicken stock
- 8 lemon slices (from 1 lemon)
- 1 pound fresh Broccoli, trimmed (about 3 bunches)

What to do...

Stir together the pepper, lemon zest, oregano, and $\frac{1}{2}$ teaspoon of the salt in a small bowl. Rub the chicken with the lemon-pepper mixture. Place in a 5- to 6-quart slow cooker. Add the stock and lemon juice to the slow cooker. Top evenly with the lemon slices. Cover and cook on LOW 1 hour and 30 minutes. Uncover the slow cooker and place the Broccoli on top of the chicken. Sprinkle with the remaining $\frac{1}{4}$ teaspoon salt. Cover and cook until the chicken and vegetables are tender, about 2 more hours.



A Date for your Diary

Eastington WI !!!

The forming of the Eastington New Women's Institute (WI).

- Ever wondered about joining the WI?
- Please come along for a chat to hear what the WI can offer.
- Refreshments will be provided.

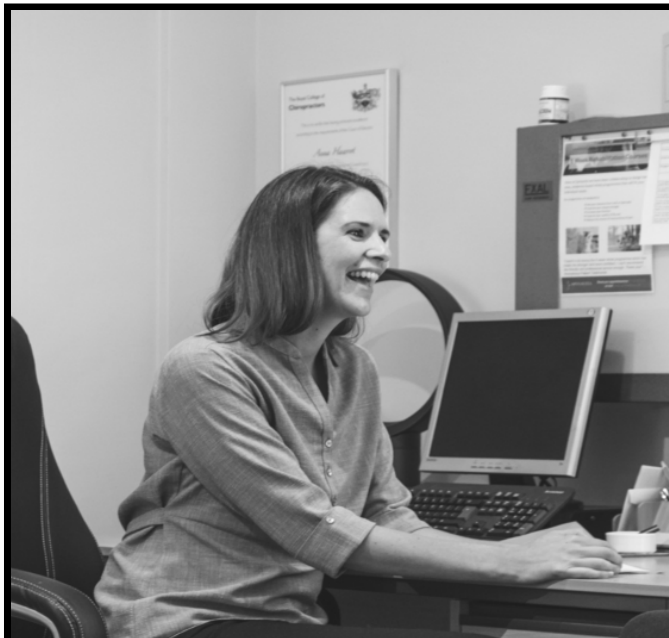
- Where: Eastington Village Hall.
- When: Thursday 20 April 2023.
- Time: 7:30pm to 9:30pm.

Looking forward to meeting you.

For further details contact Sue Davies on suejdavies10@gmail.com



theWI
INSPIRING WOMEN



Spinavita Chiropractic has been at the heart of Hardwicke and Quedgeley for over 12 years.

Our dynamic team of Chiropractors, Sports Therapists and Massage Therapists are experienced in getting you mobile, pain free and supporting your overall health and wellbeing.

We hope to welcome you in soon.

Book an appointment

01452 883232

www.spinavita.co.uk

62 Westbourne Drive, Hardwicke,
Gloucester, GL2 4RU

Insights at Spinavita

Recent data shows that 80% of the nation will experience back pain at some point in their lifetime. This Chiropractic Awareness Week (17-21 April), we're encouraging you to take back your back health.

10 million people are currently living with back pain in the UK. Research by the British Chiropractic Association found only 10% of people experiencing symptoms sought support from a GP or Chiropractor, with 46% of people not taking any steps at all to tackle their back pain, indicating a large portion of the population is still living with daily symptoms.

If you currently have low back pain, evidence suggests avoiding bed rest, using a back belt and taking Paracetamol as it is not effective and has potentially harmful side effects.

Treatments for low back pain that are encouraged and supported include:

- Manual therapy such as the treatment provided by our Spinavita Chiropractors along with education and exercise as part of a "package" of care.
- Taking non-steroidal anti-inflammatories (NSAIDs) such as Ibuprofen at the lowest effective dose for the shortest possible time, only when necessary.
- Engaging in exercises that targets improvements in function and preventing things worsening.

For more information on why our backs can suddenly 'go', if bending our backs is really as bad as we think, as well as tips for managing sudden back pain and long term pain head to our website.

PARISH MATTERS

As I write this the Bath Road is closed for Gigaclear works to provide ultra-fast fibre broadband to Eastington. While the road is shut the parish council is taking advantage of the road closure to clear the soil and grass from the back of the Bath Road pavement. This will widen the footpath in the areas where it is particularly narrow. It will expose the extent of the tarmac to determine what further works are possible.

The parish council would request that all residents ensure that hedges and trees at the front of properties are cut back and to do encroach onto pavements. Please take the opportunity in the Spring to cut back any overgrown plants, so that all pedestrians can pass safely along the pavements, particularly young families with small children, pushchairs and disabled residents who have great difficulty to pass along the pavement when hedges are overgrown.

Over the next month we will be repairing some areas of the play area. The parish council was disappointed to find there has been some vandalism in Snakey Park over the last couple of weeks. The RoSPA safety inspection will take place in early April and the necessary repairs to replace some of the rubber matting and some of the wooden structures which are loose and unstable will be carried. Snakey Park is run by volunteers. They help to empty the bins, report damaged equipment, and carry out odd jobs to ensure the play area is properly maintained. The play area is popular and gets heavy use from children within the parish and beyond. If anyone is interested in helping to maintain the play area, please let the clerk know.

There is also an opportunity to become the village Flood Warden. Free training is provided, and it is an opportunity to support the village and work with Stroud District Council to ensure help is available when flooding issues occur.

As previously reported, Stroud District Council (SDC) have been carrying out a Community Governance Review. This included considering the future of Great Oldbury within the parish. Following the first stage of the consultation, the SDC Working Group reviewed the proposals relating to Eastington which included submissions from the Parish Council, Stonehouse Town Council, Keeping Eastington Rural and the Great Oldbury Community Group for Great Oldbury to become its own Parish. The Working Group supported this decision and have drafted the new parish boundary. The proposed boundary does not include the hamlets of Westend, Nastend or Nupend or Oldbury House Care Home, however SDC will be writing to properties in these areas to ensure that they gather opinions on whether they wish to be included in the proposed parish. Additionally, the residents of the Great Oldbury Development will be consulted with directly. The Community Governance Review is now going through a second consultation, which ends on Wednesday 26th April. You can respond to the SDC consultation by the means below:

- Online - <https://www.smartsurvey.co.uk/s/CGR-SDC23/>
- Phone – 01453 754886
- Email – elections@stroud.gov.uk
- Write – Community Governance Review, Electoral Services, Stroud District Council, Ebley Mill, Ebley Wharf, Stroud, GL5 4UB

The Stroud District Council (SDC) Local Plan Examination Review commenced on 7th March and runs until the end of May. Part of the examination is to consider the Stonehouse Cluster Site Allocations with reference to allocation PS20 M5, Junction 13. The matter is to be read in conjunction with the representations previously submitted throughout the plan making process. In April 2022 Eastington parish council objected to the revised Outline Planning Application S.22/0206/OUT for the proposed Eco-Park development on land at M5, Junction 13. The Outline application remains pending determination. The parish council object to the proposed allocation under Policy PS20 as it will fundamentally erode the rural nature of Eastington Parish and consider the proposed allocation is not justified and the development is not considered sustainable. The online hearing is on 4th May and can be viewed live on the SDC website <https://www.stroud.gov.uk/environment/planning-and-building-control/planning-strategy/stroud-district-local-plan-review/local-plan-examination>

This month we said goodbye to Cllr Alex Holcombe who left the council due to work and family commitments; we hope he will return to the council in the future when he has more time. We have welcomed 3 new councillors this year. Cllr Peter Spencer-Phillips from Nupend joined in January, Cllr Karen Linforth from Bath Road joined in February and Cllr Ann Pitcher from Nastend joined in March. They are settling into the council well and have already taken on a number of responsibilities. There are still 2 councillor vacancies, so please email the clerk if you are interested.

Marianne Simpson Eastington Parish Council Clerk

clerk@eastington-pc.gov.uk

01453 799616

We have an Eastington Celebrity!

Local Author Heather Stevens talks to us about her latest novel.

I can write a book, it's easy isn't it? Having written myself in to many a corner I couldn't see a way out of and suffered writer's block to such an extent, that a blank page looked like the endless nothingness of the Sahara desert. I discovered that it isn't easy, not at all. When I started on *The Retreat* I re read Chapter one, rewrote it in its entirety had a cup of coffee, walked my dog in the glorious countryside around Eastington working out in my mind what was going to be in store for my characters. I'm often asked if any of them based on people I know, the answer is a simple one. No! I plead guilty, however, to having studied mannerisms and conversations when out and about.



Lacking the necessary confidence to submit my book to publishers I sent the manuscript to my friend, she loved it and encouraged me to try to get it published. I hesitated even then. It is surprisingly difficult to share something that you have created. Finally, emboldened by her determination that I should do so I submitted it, a couple of rejections later it was accepted. What followed was a long drawn out wait and many proof readings.

While it was going through the publishing process I started my second book *Curiosity Kills*. Another mystery with a paranormal twist, which should be published later in 2023. A family member who read this before completion, said she had read sixteen books last year and that one was the best. I'll take that.

The back cover of *The Retreat* which came out on 3rd February '23 gives what the publishers call a hook in, a short passage to invite the reader to want to find out more, this is shown below.

Rhia's life changed forever when she was 14. Now happily married the past is catching up with her. A move to run a B&B in a house whose former inhabitants are loathe to leave, reveals to Rhia that the past cannot be changed, nor can it be outrun.

Someone is watching and knows the truth of what happened on that fateful day. A truth they intend to keep buried at all costs.

*Is anyone going to be safe when the check in to *The Retreat*.*

The Retreat is available from Waterstones, Barnes and Noble and Amazon in paperback and Kindle edition. It is also with the British Library, so can be ordered from the library too. The ISBN is 9781398481510.

Happy Reading.

The Household Menace!

Could I please bring to the attention of all residents the absolute need NOT to dispose of kitchen wipes down the toilet pan !

Recently, I had to call-out a private company to clear of sewage blockage as Severn Trent (as an urgent case) couldn't get here for a couple of days. It transpired, that the blockage was actually 27 metres further down the system from my house, and it was caused by the dreaded "kitchen wipe". This is a problem that has happened a few times in the past in the Alkerton Road and Bath Road area, and at the time, caused a lot of distress to those households affected.

Kitchen wipes contain a degree of plastic in their construction, so they do NOT break down during their journey through the pipe work, that is why they cause so many blockages.

PLEASE, be aware, and dispose of these wipes carefully, and don't put them down the loo!

Thank you.



Get in touch:

✉ beaumassageandbeauty@gmail.com

📞 07790 336892

☎ 01453 824980

📘 Beau Massage & Beauty

Offering:

WAXING
FACIALS

CLINICAL GRADE ANTI-AGEING
NON SURGICAL FACE LIFT

MICRODERMABRASION
FINGERS AND TOES (GEL AND STANDARD)
CALLUS TREATMENTS

SKINNY TAN
HOLISTIC TREATMENTS

REFLEXOLOGY

LVL LASHES

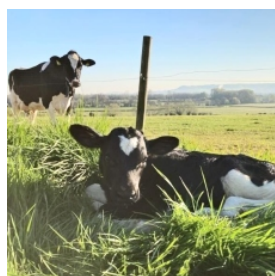
MASSAGE

PREGNANCY TREATMENTS

and more ...

www.beaumassageandbeauty.co.uk

BASED IN STONEHOUSE • OPEN 7 DAYS A WEEK • NVQ QUALIFIED • INSURED • GIFT VOUCHERS AVAILABLE



Spring at Eastington Farm Shop

How do we announce to our lovely cows that winter has come to an end? ...We spring it on them

If you pardon the pun, "Spring" isn't fully correct. In fact, our cows had what we call "Turn Out Day", which to them is the magical day they are turned-out into the fields after a cosy winter in the Barn. You can see footage of them kicking and frolicking about on our Instagram @eastingtonfarmshop !

We're welcoming in the spring by expanding our menu with new home-made, delicious Sandwiches. Expect classics such as delicious Ham, Chutney & salad, and the good ol' Egg & Cress, we have some even more exciting flavours making special appearances. Make sure to sign up to our newsletter on our website for the inside scoop!

Speaking of scoops...Ice cream is back! Celebrating its return with our new Easter special! You'll have to keep your eyes peeled on our Instagram to get sneak peaks! To keep the little ones busy, we're hosting a mini Easter Trail this half term in our farm shop garden. Our cows have told us there's been a troublesome little bunny hopping about and we're pretty sure that a few of our carrots have gone missing too... Can you help us find the Easter Bunny? Even better...what is his name? Make sure to pop in to collect your trail map and help discover our culprit! Mums, Dads, Grandparents and any others can sit idly yet close by in our garden area enjoying our beautiful coffee, a toasty sausage roll or choose from our selection of scrummy cakes and sweet treats.

We have Lamb coming in from our near-by friends Nutshell Flock in time for your Easter Roasts too. Please pop in to pre-order! We sell out of your favourite joints fast! Nutshell Flock is a family affair ran by Jason & Sarah Spence, with help from daughter Jessica. Located just off the canal in Stonehouse, your lamb is almost on your doorstep. To pair with your roast we, as always, have all our beautiful veggies, make sure to look out for our green labels indicating which veg was grown in the UK and giving its location.

This April we're hosting 2 workshops! Lizzie Mabley will be here to share her beautiful Lino Block Printing knowledge on the 3rd and we have the lovely Norah Kennedy in on the 24th teaching the traditional art of willow weaving and helping you create garden sculptures to support and enhance your spring gardening! To book please visit our events page on our website!

It's also British Beef Week the 24-30th April, so as always expect our own beautiful beef to be fully stocked. You can now pre-order on our website or pop in and let us know.

Bank Holiday Opening Times:

Easter: Open: Good Friday 7th & Sat 8th 9am-5pm

Closed: Easter Sunday 9th & Monday 10th April

Kings Coronation: Closed Sat 6th May

Normal Opening Hours:

Closed MONDAYS

Tues-Sat 9am-5pm Sun 10am-1pm

01453 823655

www.eastingtonfarmshop.co.uk



**STROUDWATER
TEAM OF CHURCHES**

St. Michael and All Angels Church Eastington

Church Tour



The church tour took place on 18th March and was well attended. The Church history booklet has been revised, augmented and reprinted thanks to a lot of hard work by Derek Greenaway. The main objective was to raise awareness of the roof repair project which we have just got underway and display boards gave a description of the work to be carried out and a time line. Undoubtedly, the slide show of historic photographs and illustrations was the star of the event. Eighty or so images of the church, school, various nearby houses and the canal were put together by local historian, Steve Mills. By popular demand we are planning another similar tour, with a new slide show, in the summer.

Church Services

Mothering Sunday the following day (19th March) was an additional service to our normal pattern when posies, made by a team of helpers, were handed out to Mums by one of the children.

Our services will continue in April and May, as normal, on the 2nd and 4th Sundays including Easter Day all at the normal time of 11.15 am. In Holy week we will be having an Agape Service with vigil to commemorate the last supper on Maundy Thursday 7pm. If you want to come along you will be welcome but please let us know beforehand for catering purposes.

Food Bank Update

A reminder that there is a collection point at the back of the church which remains open during the day time. All donations are gratefully received and taken to the Foodbank on a weekly basis. Please continue to remember those who are facing the stark choice between food or fuel particularly during the cold winter months.

Ukraine

We continue to maintain a collection point in the Church for specific items for Ukraine. The list is as follows: Boots and new socks, baby food and hygiene items, tinned food, chocolate, torches, batteries, medicines, medical equipment, adult hygiene, clean new underwear, and working android tablets. All items collected are taken on a weekly basis to the Polish Association and Ukrainian Church in Gloucester who then transport the goods overland to the areas in Ukraine where the need is greatest.

Library

The well-used library at the back of the church is re-stocked with fresh books on a regular basis. You are welcome to come into the church for a quiet browse and borrow a book for a very modest fee. There are also up to date magazines, jigsaw puzzles and a few story CD's as well.

This resource continues to be very popular and generates some useful income for the Church.

Revd Steve Harrison

It is with great sadness that we are saying goodbye to our Rector Steve whose larger-than-life presence will be greatly missed by all of us at Eastington - we will have to get the microphone out again! We all wish Steve and his family every success and happiness in their new parish. Steve's open letter is reproduced below.

Dear friends

Some of you may have heard by now that I am leaving the Stroudwater Team as I have been appointed Vicar of the Benefice of St James, Bream. Bream, for those less knowledgeable of the Forest of Dean, is about 3 miles inland from Lydney, not too far from the Welsh border.

My time here has been challenging and stretching, especially for someone moving country and settling into a big Benefice having led single parish ministries in the past. Overriding those feelings though is a sense of incredible gratitude for the opportunity I have had to minister in this place. People have been very kind in their comments, and I have been deeply touched by people thanking me for what I have been able to contribute and expressing their congratulations and recognition of the opportunities Bream offers.

I have also been very touched by the comments made by people I have been privileged to connect with through baptisms, weddings and funerals. I must have stood before a few thousand people in my five and a half years here as Rector, how amazing to be given this responsibility. Thank you for entrusting me with your tears and laughter as we have journeyed these momentous times in your lives and the lives of your families.

I need to sit down at some point and calculate how many church services I have led in this time, and again, such a privilege to share from God's word and celebrate communion together. You have been consistently encouraging and I feel we've had a lot of fun together in amongst the very serious work of church.

Talking about fun, thank you for so many opportunities to do and be the church in interesting places. There's a long list of great moments, but I think being invited, and invited back can you believe it, to open the Frampton Country Fair with the biker bunch sums up a lot of what rural ministry can be like. Watch out for the opening this year, you may recognise the person riding the bike that Rev Liz comes in on.

This Team, the people, the beautiful Cotswolds, the ancient buildings, the canals and fields and so much more of this beautiful part of creation have been indelibly imprinted on my soul. I hope I have enriched some of your lives to some degree, because I know I am the richer for having been here and having known you.

I am so pleased that Rev Liz is taking over as Interim Team Rector, and that Rev Dave will continue to minister as Team Vicar and that what we have started as a Team will continue.

My last Sunday will be the 14th May, and I know that as I give the dismissal at that last service, 'Go in peace to love and serve the Lord' it will be with a heavy heart and tears in my eyes, gratitude for the past and hope for the future.

God bless everyone

Rev Steve Harrison

Information

For further information on forthcoming events taking place in Eastington and across the Stroudwater Team you can ask to receive the weekly pew sheet by emailing: officestroudwater@gmail.com.

If you would like more information or simply to be in touch, please contact one of the Team clergy:

Rev Steve Harrison: general queries but particularly events in the Stanleys, Selsley, Frocester, Moreton Valence and Whitminster: rectorstroudwater@gmail.com

Rev Liz Palin: Frampton-on-Severn, Arlingham, Fretherne, Framilode and Saul: tv1stroudwater@gmail.com

Rev Dave Bishop: Stonehouse, Standish, Eastington, Haresfield: tv2stroudwater@gmail.com

EXCELLENT
REVIEWS



Luxury Care Home Community

The Hollies Nursing Care Home Holly Oak Dementia Care Home Apartments by the Hollies

The **Hollies**, renowned for its excellence in nursing, dementia and residential care provides the ultimate in state-of-the-art accommodation. Spacious, beautifully designed rooms, suites and living areas along with pretty gardens provide residents with a high quality of living. Exceptional dining caters for the most discerning preferences and needs.

The all new **Bessys Tea Room** for a cream tea or special event, **The Old English Pub** for a favourite drink and cosy lounges create the social heart beat for residents, families and friends. Come and be treated at Bessys Tea Room, call to book now on 01453 541400.

At the Hollies, care is not just something we offer, it's at the core of who we are. We treat every resident as an individual and work hard to tailor our person-centred services and activities to support their every need.

the gold standards
framework

Bessys
TEA ROOM

Kayes
HAIR & NAILS

THE OLD
ENGLISH PUB

We welcome immediate and planned admissions.

Call **01453 541400** • Email **info@thehollies.co.uk**
thehollies.co.uk • Drake Lane, Dursley GL11 5HA



Hollies

Kids Stuff

Spring Word Search



BLOSSOM, BUDS, BUTTERFLY, EASTER
FLOWERS, GARDEN, GROWTH, HONEYBEE
PICNIC, PLANTS, POLLEN, PUDDLE, TREES
REFRESHING, SPROUT



A Spring Quiz

What are the three major religious holidays celebrated in April? Ramadan, Passover, and Easter

In Japan, which flower signals the start of spring? Cherry Blossom

Which Indian holiday marks the beginning of spring with a festival of colours? Holi

Some European countries carve butter into which spring animal? A lamb!

The Thai spring festival Songkran features the world's largest _____ fight: Water!

1. Make Nature Collages

Using sticks, leaves, flowers, small stones or seeds to create beautiful nature activities and collages by gluing them onto card or paper. You could make a complete picture or interesting patterns out of the nature things from your garden

2. Make a Whistle from a Blade of Grass

Put your thumbs together with a blade of grass between them. Blow into the gap between your thumbs and you should hear a whistle, if not, just adjust the blade of grass.

3. Give each child a small patch of garden to grow their own plants. These could be flowers or edible plants like strawberries. If it is easier you could use an old bucket or tub to help identify each child's patch.

SEVERNSIDE OSTEOPATHIC PRACTICE

Help for when it hurts

Registered Osteopath in Saul

Osteopathy is not only for neck and back pain but for so much more.....

- ❖ Help for aches, pains and stiffness
- ❖ Help for when you are unwell and unsure
- ❖ Sports injuries
- ❖ Women's health - before and after pregnancy
- ❖ Children with growth and postural problems

Off road parking and partial disability access available
Member of The Allied Health Professions



Caroline Tosh DO MSc FSCCO

T: 01452 740818

E: admin@severnsideoosteopathy.uk

www.severnsideoosteopathy.uk



PIANO LESSONS

Piano lessons locally in Eastington, or online to anywhere in the world.

- . All ages and abilities catered for
- . Take exams or play for fun

I have taught piano and keyboards for several years - in Stroud and Aberdeen - and am now living in Eastington, and teaching both locally and online. Many of my pupils are currently taking exams.



Contact:

Elizabeth-Anne Ponting

079 1001 6565

Elizabeth-anne@aberdeenpiano.co.uk

ROTARY in the SEVERN VALE

As Spring approaches, we continue to enjoy each other's company our twice monthly breakfasts with some very interesting speakers.

January Richard Ellis gave a polished presentation of his company's involvement in creating a Drone Highway stretching from Reading to Oxford, Cambridge and Coventry – a distance of 150 miles. His company, Altitude Angel, is also working on several international projects around the world. Conservatively, the market is projected to be worth £14.5bn in Europe by 2030 creating 145,000 jobs. There are many obstacles to overcome, not only technical but also political and he left us with all wishing him every success.

Our speakers in February were very local. First was Chrissie Lowery from the recently formed Safe Space Stroud. A victim of domestic abuse herself, and the increase in number of sexual assaults in the Stroud area last year, galvanised Sophie into doing something about it. She arranged for the clearing and redecoration of the tunnel underpass at Dudbridge - site of a previous daytime rape - with all the materials donated. She then set about arranging safe spaces in local businesses and shops as a refuge for anyone who was feeling vulnerable. So far 54 have signed up in Stroud, with more joining daily. All these premises are given staff training and display a 'SafeSpace' logo in their window. Working alongside the local police, the scheme is gradually being rolled out into schools and has recently been launched in Gloucester.

Chrissie was followed by Nigel Lloyd-Jones who spoke knowledgeably on road safety. He presented some sobering statistics - 33 fatalities in the county last year as opposed to 11 murders. Gloucestershire's figures are higher than some others due to the age demographic, the percentage of rural roads and the relative density of traffic. The commonest accident occurs at a right turn at a T junction on a rural road (eg Prince Philip) due, not to speed but failure to 'see' the other vehicle. Contrary to popular belief, it isn't the younger drivers causing most of the accidents. Nigel and his sister, Alexandra set up The Older Drivers Forum following the loss of their mother to such an accident in 2016. This is aimed at supporting older drivers to remain safe on the road by raising their preventive awareness. For further details:

www.olderdriversforum.com/Gloucestershire

Maintaining a local focus, have you booked for our canal side walk? This will be in aid of the much in demand local charity Sunflowers Suicide Support. The walk will have stewards from Severn Vale Rotary along its route from Gloucester Docks to Saul Junction. Entry is only £5 per person, £10 family ticket with no charge for those under 10 years.

Free parking at Gloucestershire College and a free return ride on a vintage bus courtesy of Mike Ellis. Ice cream and a rest, if wanted, will be available half way at The Pilot Inn.

For entry, sponsorship forms and more information www.sunflowerssuicidesupport.org.uk

Make a note of the date Sunday 16th April 2023....See back cover

For information on events and breakfast meetings, please visit www.severnvalerotary.org.uk or contact keith.rog@hotmail.com

With best wishes for a happy and healthy Spring from members of Severn Vale Rotary



FRAMPTON VILLAGE SOCIETY TALKS

A warm welcome is extended to everyone to come to our series of illustrated talks held in Frampton on Severn which we hope will be of interest to a variety of people; the talks cover both local topics of interest, more general subjects and sometimes a musical or other theme-based show.

The talks are normally on Friday evenings starting at 7.30pm in our Village Hall and are organised by Frampton on Severn Village Society, which raises funds for various village projects – please refer to the full programme and dates at the end of this article.

You need not be a member of the Society to attend talks and the cost is £4.00 per person, but entrance is cheaper for members and tea/coffee plus biscuits are provided for all!

Should you be interested in becoming a member, please contact Kelvin Broad on 01452 740775 or kelvinsbroad@btinternet.com

Back Street Bronze Casting – Don't do this at home!

On 24th February John Huggins a local sculptor of international standing gave a talk to an appreciative audience describing his experiences in producing bronze castings using the 'lost wax' process. His theoretical knowledge of producing sculptures this way was gained through his tenure at the West of England Academy of Arts, his practical 'experiences', however, were not gained in a modern foundry scenario but in his garage! (don't tell the authorities). His kilns and furnaces were home-made from old water tanks and cut up gas cylinders together with modified propane torches and domestic blowers. He described the production of the desired end product out of wax which included runners to allow flow of the molten bronze and risers to allow the displaced air to escape. The wax pattern was then coated with a build-up of layers of ceramic pastes and plasters to create a heat resistant mould. Following melting out of the wax the fun started. Melting of the bronze was achieved using a delicate balance of gas and blown air - great care being taken to get the operation carried out in the correct order to avoid the inevitable explosion! Once molten and at the correct temperature (determined by eye) the crucible was hand loaded and carried in a home-made cradle to be poured into the prepared moulds. At this point Health and Safety representatives were asked to cover their eyes as pouring of the bronze at around 1000 deg C was carried out with a flat cap, prescription spectacles, smart trainers and a pair of gardening gloves being the only PPE in evidence! After around 10 days of work, with failure possible at any stage, the final casting was broken out of the mould with breath held. Success was achieved and the final sculpture dressed, polished and patina applied - modern interpretation of a bird in flight. Other examples of his work produced using the same method were passed around at the meeting and a flood of challenging questions from a fascinated audience rounded off an unusual and fascinating talk. Copies of one of John's books describing his other sculpture were available at the meeting which were being sold for charitable donations.

Confirmed Programme for 2023

24th March: Tales of a Country Auctioneer – Philip Taubenheim

28th April: A Year in the Life of a Wildlife Photographer – Phillip Mugridge

26th May: The Art of the Magician – Tony Griffith

23rd June: Sweeps to Slaves: Working Children in the Past – Prof Jenny Tann

August: Visit in planning

22nd September: The Wit and Songs of Noel Coward – Peter Gill

24th November: 21st Century Frampton Flora, Part 2 – Joy Greenwood

2nd December: Christmas Event – in planning



STROLL 4 SUNFLOWERS

SUNDAY APRIL 16TH

STARTING ANY TIME BETWEEN

10:30am - 12:30pm

**Meeting at Gloucester and Sharpness Canal
Gloucester College Car Park, GL2 5JQ**

The sponsored walk will enable people to raise money for Sunflowers which is an independent local charity working solely in Gloucestershire.

Organised by the Rotary, the stroll starts at Gloucester Docks and covers some 8 historic and picturesque miles of the canal, finishing at Saul Marina with a vintage bus shuttle back to your car.



Tickets and car parking £5 and available at
www.eventcreate.com/e/sunflowers-stroll



www.sunflowerssuicidesupport.org.uk

