



# Eastington Community News

edition  
198

<https://ecn.eastington.website>

June 2023-July 2023



Eastington Community News  
Love Eastington

Celebrating Community  
in Eastington



**Support Longfield Hospice and become a volunteer!**



Join Longfield's friendly Wellbeing team as a Community Engagement Coordinator and help raise awareness of the many services the hospice provides.)

Longfield Community Hospice is seeking new volunteers to help raise its profile in the community and encourages local people to join their loyal team.

The Minchinhampton-based hospice is currently supported by 400 committed volunteers, working across every department. Last year, volunteers donated over 48,000 hours of their time across all areas of Longfield's work.

In addition to giving something back to the community, volunteering can be a great way of forming strong friendships and learning new skills. Volunteers are usually aged 16 and above.

Ally Edwards, Longfield's Volunteer Services Advisor explained:

"We have a fantastic team of volunteers at Longfield, but we're always happy to welcome more. We're particularly keen to recruit Community Engagement Volunteers to help spread the word about our vital work in the local community. If you're friendly and outgoing, and like meeting new people, this could be the perfect role for you.

We also have vacancies which support the hospice including several roles at our new retail warehouse near Thrupp (Stroud).

For most volunteering opportunities you do not require particular skills or qualifications as we will give support and training wherever necessary. An enthusiasm for hospice care and a willingness to try new things are often more important. People from all walks of life and all ages volunteer for us."

Alex joined Longfield's warehouse team as a volunteer earlier this year and finds the work fun and rewarding. She said:

"I really enjoy my shifts in the warehouse! I like to be busy and it's good to feel useful and to be part of a team. The warehouse team is a fab group of people, with staff and volunteers all working hard and supporting each other. We also find time to share a laugh and have a cup of tea! If you are thinking about volunteering, why not pick up the phone? When you take that first step you'll get a warm welcome and an opportunity to visit, look around and see if it's for you."

To find out more about the roles available, visit [longfield.org.uk/voluntary](http://longfield.org.uk/voluntary), or telephone 01453 886868.

Find out more about your local hospice and how we help at [www.longfield.org.uk](http://www.longfield.org.uk).

Twitter: @longfieldcare

Facebook: @LongfieldHospice

Instagram: @longfield\_care

## Your news.....your ECN!

Written by You, Produced by Sue Halas and delivered by many!

Dear Readers,

Welcome to our sizzling SUMMER edition of the ECN. This edition is full of interesting articles, happy memories and sprinkled with sunshine!

Many thanks to all our contributors for all the articles and photos...

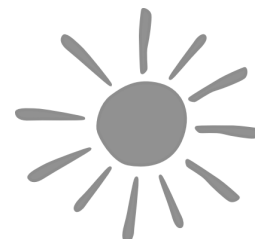
Please email everything to [articles@eastington.website](mailto:articles@eastington.website)

Best Wishes & Thank You

Sue Halas, Editor

Jan Low, Technical Support

Gill Glover, Distribution Manager



## Inside this issue...

<b>Community</b> 2 ECO 2 Craft and Chat 6 Eastington Playgroup 8 Eastington Primary School 10 Church of Christ the King Eastington 12 Twocan Theatre Company 16 Parish Council 20 StroudWater Team of Churches 24 Rotary in the Vale	<b>Articles</b> 3 Yard Sale Photos 4 Owen Harris, farmer of Eastington 9 Eastington Memories 14 Severnside Singers	<b>Charities</b> <b>Back Cover</b> Wild Hogs Rescue <b>Front Cover</b> Longfields
<b>Advice and Support</b> 17 Countryside Code 18 Spinavita Chiropractic	<b>What's On</b> 11 Mad Hatters Ball 13 Drama Workshop 15 Eastington School Duck Race	<b>Regular Features</b> 7 Gardening News 15 Seasonal Recipe 19 Eastington Farm Shop 23 Kids Stuff

**Deadline for next issue : Monday 17<sup>th</sup> July**

(For delivery around 1<sup>st</sup> August 2023 )

Please email your articles, stories, photos and events to [articles@eastington.website](mailto:articles@eastington.website)  
or, for ads please use [advertising@eastington.website](mailto:advertising@eastington.website)

*Space is limited - we may omit, edit or shorten articles. Views expressed in ECN are not necessarily those of the editors.*

**See it in colour : visit the Eastington Hub at <https://eastington.website>**





## Maintaining the Community Orchards with Volunteers

Coneygree Community Orchard is now in its 12<sup>th</sup> year of ownership by ECO, during which time it has been imagined, planted, built and maintained by volunteers.

We have been helped by grants, mainly from funds administered by the Parish Council, including one grant which paid for this sturdy mower. Maintenance costs are covered by our sales of apple juice, all made and sold by ECL volunteers.



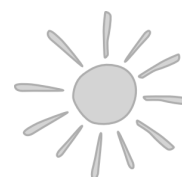
### Picnic time of year

John Morris (pictured) was a founder member of ECO and does the unsung job of mowing Coneygree, keeping it accessible for the likes of the gentleman in the background, having his lunch.

Anyone can picnic in the Community Orchards (the clue's in the name), either using the picnic benches or a traditional blanket in the shade of the trees.

Don't forget to deposit your rubbish in the large green bin at the road entrance.

*If you'd like to help maintain the orchards, ring me, Tom Low, on (01453) 823425*



## Craft and Chat

Hello Everyone!



The ladies of Craft and Chat have again been busy, we have made some premature baby cardigans for the neonatal ward in Gloucester house. They were really appreciated by the staff there, and we were so pleased to help out - bless them.

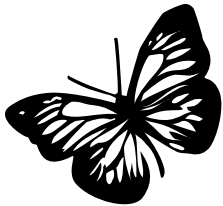
This week we are going to try our hand at glass painting, I will let you know what happens next time.

We also had our own Coronation Buffet lunch at group which was just brilliant - so many tasty things to choose from!

**We meet every Friday morning in the Village Hall.**

**Anyone welcome to join our group it will be lovely to see you.**

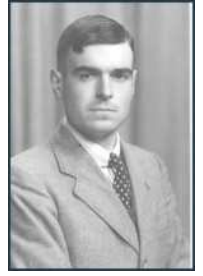
# Some of our happy sellers at the very successful Yard Sale in April!





## **Owen Harris, Farmer of Eastington Stephen Mills**

The name 'Owen Harris' will be familiar to everyone in Eastington, immortalised in the form of the Owen Harris Memorial Ground, site of Eastington Community Centre. However, newer residents may not know who Owen was and how his legacy was to provide for the village.



Owen Edward Harris was a farmer born in Eastington in 1919 - his parents were George and Flora Harris. Later in life, he lived in Alkerton farm, opposite the entrance to Swallowcroft.

He attended the village school until 1931 and was clearly a bright lad, as he passed the scholarship to Marling School in Stroud. But farming was clearly in his blood and while still at school, he made himself useful helping Alfred Keyes of Alkerton House. When he left Marling aged 16, he became a farm apprentice at Mr William's farm at Frampton-on-Severn. When the Second World War began, Owen was not called up for active duty as along with coal miners, ship builders, railway and dockworkers, teachers, and doctors, farming was considered to be a 'reserved occupation'. The importance of food production had never been greater.

For some years, Owen continued working in Frampton. However, eventually, Owen and his parents moved into Alkerton Farm – this had previously been owned by his grandfather, before being let to a tenant farmer. On his retirement, the Harris family moved back in - this was to be Owen's home for the rest of his life. His father was known as "a miserable man" - he had apparently had a hard time during the First World War, so perhaps that was the reason. But both he and Owen enjoyed opera!

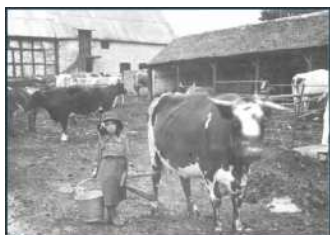
Inevitably, Owen's parents passed away, and for a time he lived alone in Alkerton Farm. But to many people's surprise, when in his later 50s, he met and married Shirley. They remained together until Owen died in 1987, still farming. At the time, the interior of the farmhouse looked as if little had changed for a generation or more.

Owen seems to have been quite a private but well-liked man, especially comfortable with those who shared his interest in farming and his love of the past. When I first moved to the village, I often saw Owen pottering about his farm, usually wearing what looked like a smock, tied around his waist with string! He kept himself to himself, although there was usually a nod as I passed.

When all around him were abandoning the more traditional ways of farming, he continued to use a horse where possible. His one concession to modern times was his Ferguson TE20 tractor (universally known as "the little grey Fergie") built in Coventry from 1946. He continued to rely on his horse and Fergie until his death in 1987.



**Alkerton Farm 1970s**



**Owen's mother  
Flo - a junior  
milkmaid!**



**Owen in the village  
fete. He apparently  
hated being dressed  
like this! The costume  
looks like one of those  
used for the annual  
village May Queen**



**Owen with his  
parents,  
George and Flo  
(nee Dowdeswell)**



The late Sylvia Bliss knew Owen well (see her memoirs in ECN May 2019 at [https://ecnarchive.eastington.website/pdfs/174\\_aprmay2019.pdf](https://ecnarchive.eastington.website/pdfs/174_aprmay2019.pdf)). She recalled that Owen was certainly a character and mentioned:

*“his appearance (quite deliberate I believe) of being a country yokel was quite untrue as it hid a shrewd brain and a ready wit. He, like a few of us, found it very difficult to accept the inevitable changes that have come to the village. It is not easy to live one’s entire life in a village that is changing before your eyes”.*



Haymaking in the 1970s



Owen later in life with his closest friends. Left to right: Mr Daniels (who built the cart), Owen, Arthur Keyes, George Ayland, and Ted Burrows (Owen’s cousin)

After Owen’s death, Shirley sold the farm and moved to Chichester. In 1989, she donated the eight acre field formerly known as ‘Pies and Packers’ (anyone know the derivation of this odd name?) that became home to the new Eastington Community Centre - the land was to be used 'for the benefit of the residents of Eastington, for social and recreational use.' Fittingly, Shirley Harris officially opened the new building on its completion.

### The sale of the farm

The sale was on Friday 15<sup>th</sup> April 1988 and caused immense interest, with people coming from far and wide. It created traffic chaos in the village - Swallowcroft was packed with cars, and vehicles were parked up as far as the motorway. Auctioneers Pearce Pope & Sons were brought in to auction everything off. Some additional items offered came from Eastington Park, then the property of Gloucestershire County Council. The Park had been used as a care home but had recently closed. The result was hundreds of individual lots that included everything from hosepipes, teapots, household furniture, bedding, and carpets. It also included no less than seven(!) pianos, as well as Owen’s little grey Fergie which was the subject of some fierce bidding.

The process of bringing the new community centre to fruition was a long and complex one, and involved a tremendous amount of hard work by a many individuals. This was detailed in Gill Glover’s articles in the February, April, June, and December 2021 editions of the ECN.

Owen may be gone, but his name will live on through the generously-donated land, now home to Eastington’s community centre, a much-valued asset.

We kept in touch with Shirley until she died in 2014, and it was through her that we now have some evocative photos of Owen and his early family life, a number of which are shown here.



Photos prior to sale in 1987



We have enjoyed a wonderful term and are so grateful for the warmer weather so we can enjoy the allotment even more frequently. As we approach the final term of the academic year, we are preparing our pre-schoolers for 'big school' and enjoying all the exploratory activities we can. We were lucky enough to celebrate King Charles III coronation. We made flags, and decorated a cloak for the King. We looked at photos of the King and his family and talked about what would happen during the Coronation and the meaning of the different items handed to the King.



We have been reading the 'Very Hungry Caterpillar' and looked at the life cycle of a butterfly. We made caterpillars from clay and retold the story. We looked at different foods, deciding if they were healthy or unhealthy. We have spent lots of time at the allotment, encouraging the children to help with weeding and planting vegetables. We have looked for bugs and watched how they move and where they are living.

We also enjoyed a special treat of a shoebox oven, melting chocolate in our makeshift 'oven' and dipping scrummy strawberries and bananas in it.



We have limited spaces for January so please get in contact if you require a place. It is never too early to register your child for a place, please email [eastingtonplaygroup@hotmail.com](mailto:eastingtonplaygroup@hotmail.com) for a registration form.



## Re-designing your garden on a budget

I think knowledge is power, so today I am sharing my insights as a Garden Designer on how you can re-design your garden on a budget.

I have pulled together my top six tips, and created a Pinterest board which you can browse for inspiration.

You can access my Pinterest board via my website [www.jhgardendesign.co.uk](http://www.jhgardendesign.co.uk)



1

### Paint your fences

A low cost but highly effective way to update your garden is to paint the fences. Opting for a neutral or black will not only freshen up tired fence panels, but also make your space feel bigger.

2

### Recycle old material

If you've had works done in your home you will know too well that getting rid of material comes at a cost, so why not re-use it?

One great example of this is opting for gabion structures for seating or retaining walls. If you are going to see the front of the gabion, make sure you face this side with something more aesthetically pleasing, logs can look fab and also low cost.

3

### Re-use items as planters

Think creatively, you could fill an old wheelbarrow, plant up rusted watering cans, fill welly boots or plant up your old kitchen sink. This creates unique and fun features & won't cost you a thing.

4

### Grow your own plants

Grow from seed or propagate from existing plants you love. This will take longer but growing your own is so rewarding and will help you save on your planting budget. Why not buddy up with a friend or neighbour and do some swaps?

5

### Plan & prioritise

Investing time up front in designing your garden will pay off long term. Think with longevity in mind so your garden will not only work for you now but also for years to come. This will help you to avoid rash decisions and expensive mistakes.

If you are building your garden in phases starting with the areas that have the most impact to you and your family so you can still enjoy the space as it develops.



[www.jhgardendesign.co.uk](http://www.jhgardendesign.co.uk)



[jessica\\_holcombe\\_garden\\_design](https://www.instagram.com/jessica_holcombe_garden_design)



[Jessica Holcombe Garden Design](https://www.facebook.com/JessicaHolcombeGardenDesign)

Are you looking for  
more inspiration for you  
garden? Sign up to my  
monthly newsletter  
now, via my website.



## Eastington Primary School

# CORONATION CELEBRATIONS

Friday 5<sup>th</sup> May 2023 at Eastington Primary School was a great day. We had a day of Coronation celebrations and wore red, white and blue to school: it was really fun. Class 5 children did a quiz with their little friends and a royal themed 'pass the parcel' game. Everyone loved working together. Winning was fun too!

In assembly we learned about Zadok the Priest written by George Frideric Handel. It is a strong and powerful piece of music that has been used during every coronation since 1727. It is also used in UEFA Champion League football matches too. Some of us heard it being played in the Coronation of King Charles III. If you want to find out more about this amazing piece of music look online here:

<https://www.bbc.co.uk/programmes/articles/30nHpvOr318zHcS033gLWg7/zadok-the-priest-by-george-frideric-handel>

Later, we ate a special Coronation lunch outside thanks to our wonderful midday supervisors. Lots of bunting was up which was fun. Luckily, it was really sunny so we all were very happy. All the classes enjoyed making crowns for a contest too. The variety of crown styles was amazing. Which do you like best?



At the end of lunch, we announced the crown winners and enjoyed a fun conga around the playground. We took our crowns home, so we could keep them for the Coronation on the Saturday. We hope you had a wonderful coronation long weekend, whatever you did.

By Lola Harris, Violet Clutterbuck and Mrs Yorke from the School Council



Eastington Memories



Wesleyan Sunday School Eastington 1927



Eastington Rectory 1934



May Queen 1911  
2<sup>nd</sup> left Nellie Shill



May Queen 1921  
2<sup>nd</sup> left Ray Tudor. 3<sup>rd</sup> left Marian White



Eastington Show 1935



Many Thanks to Megan Timbrell





# Church of Christ the King Eastington

## AGM and Moving Forwards

The Church of Christ the King held its first Annual General Meeting on 28<sup>th</sup> May. The church was set up as an independent evangelical church to carry on the work and witness of the Gospel of Christ in the area in anticipation of Eastington Methodist Church closing (which it did at the end of August last year). CoCtKE is structured as a Charitable Incorporated Organisation (CIO) which means it is a registered charity and a legal entity in its own right. More can be found out on the church web pages at [www.CoCtKE.org.uk](http://www.CoCtKE.org.uk) in the “About Us” section.

The initial big issue facing the new church was whether it was going to be able to continue meeting in the former Eastington Methodist Church Hall. Although the building would have almost certainly been built and funded by local people here in Eastington, the Methodist Church was determined to sell it off and take the money. Very providentially, the TwoCan Inclusive Theatre Company has bought the building and they are willing to rent it to us for us to carry out our activities. Some of our meetings may have to move into slots when Twocan do not need to use the building themselves but this should be quite possible and it makes better utilisation of the building.

Now being able to move forward with that resolved, we are considering the next steps. We are exploring the possibility of appointing a pastor or minister to help grow the church and are looking for someone who feels called by God into that role. These are exciting times and our worship times on Sundays have been greatly enhanced by a series of excellent preachers leading the services each week. Why not come along? We would love to meet you and you would be very welcome to join us.

## Clearing out the Clutter

One of the challenges facing both ourselves and TwoCan is how to deal with all the clutter that has accumulated over the years leading up to the closure of Eastington Methodist Church. Some that was useful (and still is for a church) probably takes up too much space for the new role of the building. This would include things like the large wooden pulpit and communion rail. There are other things that are potentially useful to both organisations which can be shared use. There are some useful spares/replacements for lights and heaters but there is also a lot of junk that has accumulated over the years and really needs clearing out to make space. Necessity is driving the need for focus in this situation and it can be the same in our personal circumstances too. What really matters to us (or should) and what is getting in the way? Are we focusing on the here and now rather than thinking about our eternal future after we die when everything we have now gets to stay here – except us! Have you the assurance of Salvation through Jesus Christ? – often not a popular question but it is an important one.

## Youth Club Update:

It has been possible to resume Youth Club on Friday evenings as Ken has recovered enough to be able to help out at Youth Club again. We welcome new members including those who will be changing to secondary schools this coming September. At present, it looks like there may not be a Youth Club meeting on June 23<sup>rd</sup> but this will be confirmed nearer the time. We could still really do with one or two additional Christian helpers to enable a reliable presence on Friday evenings.

Church Main Activities (please check the website for details and variations)	
Baby & Toddler Group	Mondays 10:00 – 11:30am
Prayer Meetings using Zoom:	Tuesdays & Fridays 8:30 – 9:00am
Lunchtime Bible Study (includes a light lunch)	Tuesdays 1:00 – 2:30pm
Youth Club (11-18)	Fridays 7:00 – 9:00pm
Sundays at 11am:	Café Church (all ages together) Sunday June 11 <sup>th</sup> , July 9 <sup>th</sup>
Morning Services (refreshments afterwards)	The other Sundays

**If you'd like to know more; or you'd just like someone to talk to; or if we can help in any way; give us a call. Ken & Beck Burgin**  
**01453 827414 or 07511197265 or**  
**email: [info@CoCtKE.org.uk](mailto:info@CoCtKE.org.uk)**

**[www.CoCtKE.org.uk](http://www.CoCtKE.org.uk)**

## Dance the night away at Longfield Hospice's Mad Hatter's Summer Ball



Longfield Community Hospice is hosting a charity Mad Hatter's Summer Ball on Saturday 24 June, from 7.30-11.30 pm, at the De Vere Cotswold Water Park Hotel and looks forward to welcoming new and existing supporters for a glamorous fun-filled evening.

Featuring an extravagant Mad Hatter's theme, this black-tie event will include fizz on arrival, a delicious three-course meal, live auctions on the night and a DJ. It offers the perfect opportunity to party with friends, colleagues or clients, whilst raising money for the hospice and helping fund its vital work supporting patients, families and carers across Gloucestershire.

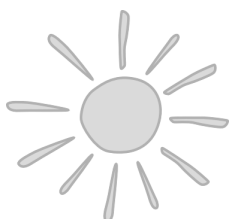
Tickets are from £45 per person and the hospice is also seeking local businesses or individuals who would like to take up sponsorship opportunities or donate auction prizes for the evening.

Louise Cook, Head of Fundraising and Marketing said:

"We're really looking forward to hosting another fabulous ball this year – this time with a Mad Hatter's twist. Why not dust off your bow tie or favourite evening dress and get ready for a night to remember? It's the perfect opportunity to get together with friends or family, or to entertain clients, and know that you're helping raise vital funds for our hospice care in the local community. Tickets are only £45 per person, which could pay for one hour of our Hospice at Home care.

We're excited to be holding the ball in such a stunning venue – we hope as many people as possible will join us for a really fun evening." Discounted bed and breakfast room rates are available for guests at the hotel.

For tickets visit [longfield.org.uk/summer ball](https://longfield.org.uk/summer-ball) or to discuss sponsorship opportunities or to donate prizes for the auction or raffle, please email [events@longfield.org.uk](mailto:events@longfield.org.uk) or call 01453 886868. The team would also welcome volunteers to help decorate the venue.



## TwoCan Inclusive Theatre Company

We are TwoCan Inclusive Theatre Company who has just taken over the Old Methodist Church and we wanted to say a big Hello to everyone in Eastington and let you know a bit about us and what we have planned for the building.

TwoCan Inclusive Theatre Company is a Gloucestershire-based charity that, for over nine years, has worked to provide inclusive accessible creative experiences for artists, participants, and audiences. As well as producing professional theatre that puts disabled artists centre stage, the charity also has a large education and community department that works through play and the arts to develop life skills essential to well-being and mental health.

The company runs '2CA' an academy for young people aged between 5-25 years living with or without a disability. It currently provides weekly sessions for over 40 young people who are connected by their love of performance. The group is renowned for their talents and infectious enthusiasm and has not only produced theatrical work for their friends and family but also within the community, seen performing at festivals and celebrations county-wide.

The charity also works with adults providing breakfast drama groups, wider creative opportunities, work placements, youth club, parent and toddler, and the chance to complete qualifications through arts awards. TwoCan also helps the wider family network by supporting an informal community support group that has developed between parents and guardians of service users.

TwoCan has spent 9 years without a home of its own, working from a wide variety of venues across Gloucestershire. Over the past four years, it has been unsuccessful when making bids for properties of its own, losing out to housing development schemes. So, they are very excited about finally having a place of their own.

TwoCan has community that has grown not just in number, but also in strength. It has become a hub not just for creativity but also a lifeline for those that have found it. Most users live with disabilities ranging from downs syndrome, autism, cerebral palsy, learning difficulties, and fragile X, but when anyone is at TwoCan these disabilities are never a barrier, as we know that when there are two of you, it is not about what you can or cannot do, but what you can do together. Hence where the name TWO CAN came from.

However, although the old church has real character and a wonderful history, is not purpose-built for people living with disabilities in 2023. It needs a renovation that would inspire creativity and a sense of security for everyone's individual needs. Over time we plan to renovate the building to make it more accessible and economical for all those who use it and will be fundraising and seeking support from businesses and organisations that specialise in these kinds of transformations.

In the meantime, we will be slowly moving our regular weekly groups to the venue and hope to expand and develop new ones. We will also be hiring the space for various community activities working with Ken and Rebecca from the Church of Christ the King, Eastington, and Mandy in Stonehouse from the Soul School.

If anyone would like to know any more about our organisation or are interested in hiring the space in the future, please feel free to contact us. [louise@twocantheatre.org.uk](mailto:louise@twocantheatre.org.uk)







Attention all Wizards &  
Witches

You are cordially invited to an  
**"All things Harry Potter" DRAMA workshop,**  
on Saturday 17<sup>th</sup> June 10:00 - 12:00 at the  
Old Methodist Church in Eastington  
For ages 6 - 11 (£10 per witch/wizard/muggle)



Please register your interest with Hogwarts's Drama Professor  
Mandy Johnson BA (Hons) PGCE LLAM (Hons) M Ed



Just before Easter we had an enjoyable evening at Wisma Mulia entertaining residents and staff with a Singalong concert featuring 'Songs from the Shows' interspersed with a couple of Stanley Holloway's monologues about Albert and The Lion. A very enjoyable evening was had by all with lots of audience participation.

We are now practising hard for our summer adventures.

On Saturday 27<sup>th</sup> May at 2.15pm we will be providing some musical entertainment at The Arkell Centre, Nailsworth for a Quilt exhibition.

On Saturday 22 July we will be holding our annual concert, with picnics, in the beautiful garden at 'Top 'o' the Green' in Frampton, courtesy of Ian and Jane Hey. Tickets will be on sale at The Green Shop, Frampton (cash only please), from Pam Greenwood and members of the choir.

To bring our summer activities to a close we will be singing in Gloucester Cathedral on Wednesday 26<sup>th</sup> July 11am at 'What the Lark Saw' a Community Participation event as part of the Three Choirs Festival. We even get a mention in the official programme! We will be singing our new Sevenside song to the tune of The Gloucestershire Wassail. Tickets are on sale through the Three Choirs website at <https://3choirs.org>

The choir then takes a break over the summer to catch our breath before returning in the autumn on Thursday 7 September at 7.30pm in the Chapel (as WI will be in the Village Hall), with a (brief) AGM at the start of our rehearsal the following week.

As always, anyone interested in singing is very welcome to join us in the autumn on Thursdays in Frampton Village Hall. No auditions are required so if you enjoy singing, please come along. We're a very friendly bunch.

For further information contact Pam Greenfield on 01452 740126 or [pam.g@btconnect.com](mailto:pam.g@btconnect.com)

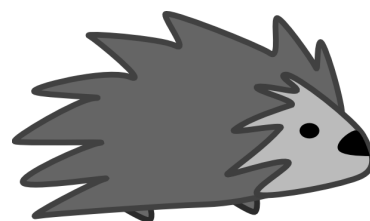


**Now hiring**  
Positions available

- ➡ Skilled groundworkers in the South-West of England and South Wales
- ➡ Class 2 drivers (sweepers, tippers and RCV)
- ➡ Administrators in Tewkesbury and Gloucester
- ➡ HGV Mechanic and Plant fitter based at Head office GL10 3AQ
- ➡ Asbestos removal operatives and Demolition labourers in the South-West
- ➡ Plant Operators (Gloucestershire) and Plant Hire desk Controller - Head office

As good as our word, as strong as our name.



### A Seasonal Recipe

#### Rhubarb and Nutty Crumble

500g rhubarb, chopped into chunks the length of your thumb  
100g golden caster sugar

#### For the Crumble Topping

140g self-raising flour  
85g butter, chilled  
50g light brown muscovado sugar  
50g mixed nuts



Tip 500g thumb-length chunks of rhubarb into a saucepan with 100g golden caster sugar.

Cover and simmer on a very low heat for 15 mins, adding more sugar if you want. When soft (but still holding its shape) and sweet enough, pour the rhubarb into a medium baking dish.

Heat oven to 200C/180C fan/gas 6.

To make the topping, rub 140g self-raising flour and 85g chilled butter together with your fingers until you have a soft, crumbly topping.

Now add 50g light brown muscovado sugar and 50g of mixed nuts. Mix together with your hands.

Scatter the topping over the rhubarb and bake for 30 mins or until golden brown on top.

Serve piping hot with thick custard or double cream

# Summer Fete + Duck Races

2

SUNDAY, 2 JULY 2023 FROM 12:00-15:00

## Eastington summer fete and duck races 2023

Eastington County Primary School



## PARISH MATTERS

The parish council has co-opted two new councillors onto the parish council in the last couple of months. It now has its full complement of 11 parish councillors. We welcomed Richard Maisey of Nupend and Phillip Ward of Great Oldbury.

We held our Annual Parish Council Meeting on 11<sup>th</sup> May. The first business of the meeting was to elect a Chair for the coming year. Muriel Bullock was nominated as Chair, which was unanimously approved by Council. Muriel confirmed she was willing to take the role of Chair for one more year. The Annual Parish meeting took place on the same evening. The Annual Parish Meeting is not a regular Parish Council meeting but a meeting of the Parish. Cllr Bullock presented the Chairman's Report on the business of the last 12 months.

The Chairman's Report 2022-23 is given below.

### CHAIRMAN'S REPORT 2022/23

Another busy year for Councillors doing their best for the Parish.

A very warm welcome to 5 new Councillors who have joined us during this year and a big thank you to all Councillors for their hard work throughout the year.

We also said goodbye to 3 Councillors Alison Loveridge, Jennie Corrie and Alex Holcombe, we thank them for their contribution to the Parish and wish them well.

Great Oldbury is due to become a Parish in its own right next year so it is possible we will be losing some of our Councillors. This will be decided at the Local Election in May next year.

We are still working hard on getting the pavement on Bath Road widened. Last year Highways carried out some siding and edging work along the back of the pavement, but it only provided limited improvement to the footpath width. The parish council is taking this further and has been carrying out some exploratory works to determine which stretches of pavement can be scraped right back and re-surfaced with new tarmac.

The traffic calming work is still ongoing, and we are in consultation with GCC highways to ensure we meet all the highways requirements and get the most effective solution.

We have installed 3 benches around the village that are being well used. If anyone has a request for a bench in their area, please contact the Clerk with a possible site.

We again paid for a Christmas meal for members of the Bingo groups which was very much enjoyed by everyone.

We have dealt with a lot of planning applications during the year, at present our planning consultants are representing the Council at the examination in public of the local plan. Our main concerns are the increase in the land allocation for business and commercial development.

Marianne Simpson  
Eastington Parish Council Clerk  
[clerk@eastington-pc.gov.uk](mailto:clerk@eastington-pc.gov.uk)

01453 799616

# The Countryside Code



Your guide to enjoying parks and waterways, coast and countryside

## Respect everyone

- be considerate to those living in, working in and enjoying the countryside
- leave gates and property as you find them
- do not block access to gateways or driveways when parking
- be nice, say hello, share the space
- follow local signs and keep to marked paths unless wider access is available

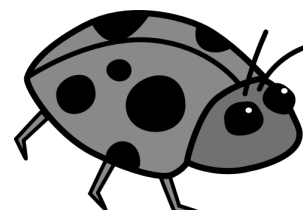
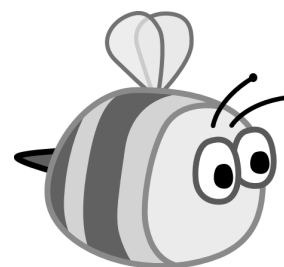
## Protect the environment

- take your litter home - leave no trace of your visit
- do not light fires and only have BBQs where signs say you can
- always keep dogs under control and in sight
- dog poo - bag it and bin it - any public waste bin will do
- care for nature - do not cause damage or disturbance

## Enjoy the outdoors

- check your route and local conditions
- plan your adventure - know what to expect and what you can do
- enjoy your visit, have fun, make a memory

[www.gov.uk/countryside-code](http://www.gov.uk/countryside-code)



## To amplify some aspects of the Countryside Code-

**Fruit waste is Litter** - whilst you may think its 'natural', banana skins can take up to a year to decompose; orange peel, up to two years. Please take any fruit waste home and dispose of properly.

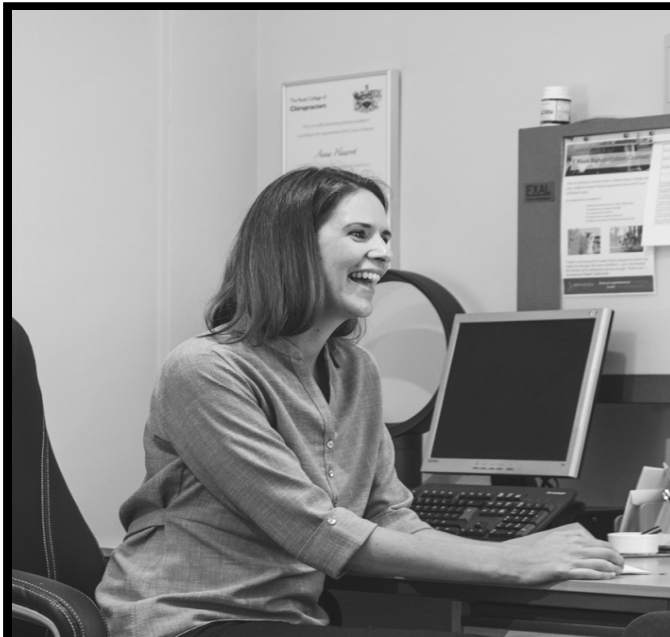
**Dog Poo is harmful to livestock** - most responsible dog owners bag-up any poo deposited on footpaths, but it's essential you do the same when in open fields. Dog poo can cause cows, sheep and deer to lose their unborn babies. Please bag it up and dispose of in one of the numerous poo bins located around the village.

**Wild Flowers are part of our natural ecosystem** - please do not pick any wild flowers. Not only is it illegal, but they are essential as part of the ecosystem around our village - the flowers attract birds, bees and other insects. Fish in the river eat the flies, which also attract a wide variety of birds - how many of you have spotted a kingfisher at Millend?

All parts of our natural environment are connected, please look after them.

By respecting our village countryside, we can all enjoy the fields and paths together.

Paul Mannings



**Spinavita Chiropractic** has been at the heart of Hardwicke and Quedgeley for over 12 years.

Our dynamic team of Chiropractors, Sports Therapists and Massage Therapists are experienced in getting you mobile, pain free and supporting your overall health and wellbeing.

We hope to welcome you in soon.

Book an appointment

**01452 883232**

**[www.spinavita.co.uk](http://www.spinavita.co.uk)**

62 Westbourne Drive, Hardwicke,  
Gloucester, GL2 4RU

### Insights at Spinavita

The British Chiropractic Association has undertaken a UK-wide research of 5,000 people to understand the impact NHS waiting lists are having on musculoskeletal (MSK) health. Data from this research shows that over half (56%) of British people feel put off seeing their GP because of NHS waiting lists.

According to the NHS, over 20 million people in the UK have an MSK condition such, as arthritis or back pain, and they account for up to 30% of GP consultations in England.

Chiropractors are an integral part of UK healthcare, supporting the NHS as part of an integrated system. By giving patients proactive options and choice, chiropractors are well placed to help relieve the strain on the NHS. All of the Spinavita Chiropractors are members of the British Chiropractic Association and champion greater patient choice, improving patient experience, and avoiding MSK issues developing into chronic conditions due to a lack of physical activity and further impacting the NHS later down the line.

To support our colleagues in the NHS, chiropractors can provide those suffering with MSK conditions an alternative solution. We offer patients a wide-ranging package of care which is patient-centred, supported by evidence and results in great patient reported outcomes. More people are turning to chiropractors to manage poor mobility, pain and wider health concerns arising from MSK issues before they worsen.

To find out more about the Chiropractic care and treatment we can offer, head to our website here [www.spinavita.co.uk](http://www.spinavita.co.uk) or call us on 01452 883232



# SUMMER AT



## EASTINGTON FARM SHOP

MIDDLEHALL FARM

After such a soggy spring we're more than ready to welcome the warmer weather! It can't come too soon!

We're super excited to announce we will be hosting our first foodie events! Fancy a bacon or sausage sarnie in the sunshine??? Sun 28th May it's happenin! Breakfast always tastes better when someone else is cooking! Kicking off from 9am, last orders 12 but best come down early before the lot is scoffed!



Ever tried our beautiful beef? You know how tasty it is! Thurs 15th June is our first ever Burger Night! Reared right on you doorstep! We thought hard how could we make this even better...cider in the sunshine...um yes please?! Veggie & gluten free options available! Kicking off at 7pm, this event is ticketed, please see our website to book!

Music sessions are back! We're hosting local talent to play you into the weekends with some sweet, sweet melodies. Check out the dates below to make sure you don't miss out! Grab a coffee, soak up some rays (weather permitting, of course), collect your weekly veg box, nibble some cheese, enjoy an ice cream, even boogie around the veg stand... We promise not to judge...hey we might even join you!



Summer brings with it some of our favourite fruit and veg, Great British strawberries, home grown rhubarb, and the beans are starting to grow legs! It won't be long till they're off for a jog or before their cousins are saying Au Revoir! Our shop is looking beautifully decorated with the tastiest produce...we mean quite literally...make sure to check out our beanstalk arch we've planted in between the shop and coffee bar!

Last year we had the most magical day and transported you to the Caribbean from our farm garden. Well of course we couldn't not offer you that again. We are delighted to have the incredible Panache Steel Band back with us on Sat 1st July! We've been stock piling our ice for iced lattes and our cows have been producing the tastiest ice cream ever. Not to forget all our summer specials soon to be making appearances! Did someone say affogato...?

### Dates for the Diary:

Sun 28th May - Breakfast Morning  
Sat 3rd June - Dockside Acoustic  
Mon 5th June - Norah Kennedy Workshop  
Thurs 15th June - Burger Night  
Sat 15th July - Alison Hustwitt  
Sat 12th August - Peekies

[WWW.EASTINGTONFARMSHOP.CO.UK](http://WWW.EASTINGTONFARMSHOP.CO.UK)  
01453823655

Our workshops have been more than successful! We have Norah Kennedy back creating willow garden structures on June the 5th as well as Karen Green teaching you how to watercolour flowers like a pro on the 31st of July!

## See you soon & let the sunshine roll on!



**NORMAL OPENING HOURS:**  
CLOSED MONDAYS  
TUES-SAT: 9AM-5PM  
SUN 10AM-1PM





## St. Michael and All Angels Church Eastington



### Church Services

We said goodbye to our Rector, Steve, at a farewell service at Standish Church on Sunday 30th April which was followed by a brunch with bacon rolls. Steve is now settled in his new home in Bream and he has already been caught on camera checking out the bike trails in the Forest! A coach trip has been organised for members of the Team to attend his Licensing Service on 8th June when he is formally appointed to his new role. We wish him every success.

Our new Team Rector is Liz Palin supported by Dave Bishop who will take most of our services from now on. We await news from the Diocese on the make up of the Team going forward but in the meantime, services are unaffected and will continue in June and July, as normal, on the 2nd and 4th Sundays of the month.

### Coronation

The coronation of King Charles III was celebrated when we flew a special flag from the church tower and the bells were rung over the bank holiday weekend at the beginning of May

### Yard Trail

The popular Eastington Yard Trail went ahead again this year at the earlier date of Saturday 15th April 2023 and the new organiser Kim Jones generously donated the proceeds of £107.00 to the Church for which we are very grateful.

### Annual Meeting

The Annual Meeting of the Church took place on 10th May 2023 when members of the Parochial Church Council appoint new officers to serve for the forthcoming year. We currently have one Churchwarden with the second post being vacant and also a vacancy for one more PCC member. If you think you may have something to contribute to the life of the Church or the fabric of the building please get in touch. The PCC meets a few times a year and we keep meetings short and informal!

### Food Bank Update

A reminder that there is a collection point at the back of the church which remains open during the day time. All donations are gratefully received and taken to the Foodbank on a weekly basis. Please continue to remember those who are facing the stark choice between food or fuel particularly with the relentless cost of living increases.

## Ukraine

We continue to maintain a collection point in the Church for specific items for Ukraine. The list is as follows:

Boots and new socks, baby food and hygiene items, tinned food, chocolate, torches, batteries, medicines, medical equipment, adult hygiene, clean new underwear, and working android tablets.

All items collected are taken on a weekly basis to the Polish Association and Ukrainian Church in Gloucester who then transport the goods overland to the areas in Ukraine where the need is greatest.

## Library

The well-used library at the back of the church is re-stocked with fresh books on a regular basis. You are welcome to come into the church for a quiet browse and borrow a book for a very modest fee.

There are also up to date magazines, jigsaw puzzles and a few story CD's as well.

This resource continues to be very popular and generates some useful income for the Church.

## Information

For further information on forthcoming events taking place in Eastington and across the Stroudwater Team you can ask to receive the weekly pew sheet by emailing: [officestroudwater@gmail.com](mailto:officestroudwater@gmail.com).

If you would like more information or simply to be in touch, please contact one of the Team clergy:

**Rev Liz Palin:** [tv1stroudwater@gmail.com](mailto:tv1stroudwater@gmail.com)

**Rev Dave Bishop:** [tv2stroudwater@gmail.com](mailto:tv2stroudwater@gmail.com) or:

**Churchwarden: Mike Naylor** [mike@mikenaylorsurveyors.co.uk](mailto:mike@mikenaylorsurveyors.co.uk)



*Get in touch:*

✉ [beaumassageandbeauty@gmail.com](mailto:beaumassageandbeauty@gmail.com)

☎ 07790 336892

☎ 01453 824980

📱 Beau Massage & Beauty

*Offering:*

WAXING

FACIALS

CLINICAL GRADE ANTI-AGEING

NON SURGICAL FACE LIFT

MICRODERMABRASION

FINGERS AND TOES (GEL AND STANDARD)

CALLUS TREATMENTS

SKINNY TAN

HOLISTIC TREATMENTS

REFLEXOLOGY

LVL LASHES

MASSAGE

PREGNANCY TREATMENTS

*and more ...*

[www.beaumassageandbeauty.co.uk](http://www.beaumassageandbeauty.co.uk)

BASED IN STONEHOUSE • OPEN 7 DAYS A WEEK • NVQ QUALIFIED • INSURED • GIFT VOUCHERS AVAILABLE

EXCELLENT  
REVIEWS

# Luxury Care Home Community

**The Hollies Nursing Care Home   Holly Oak Dementia Care Home   Apartments by the Hollies**

The **Hollies**, renowned for its excellence in nursing, dementia and residential care provides the ultimate in state-of-the-art accommodation. Spacious, beautifully designed rooms, suites and living areas along with pretty gardens provide residents with a high quality of living. Exceptional dining caters for the most discerning preferences and needs.

The all new **Bessys Tea Room** for a cream tea or special event, **The Old English Pub** for a favourite drink and cosy lounges create the social heart beat for residents, families and friends. Come and be treated at Bessys Tea Room, call to book now on 01453 541400.

At the Hollies, care is not just something we offer, it's at the core of who we are. We treat every resident as an individual and work hard to tailor our person-centred services and activities to support their every need.

the gold standards  
**framework**

**Bessys**  
TEA ROOM

**Kayes**  
HAIR & NAILS

THE OLD  
ENGLISH PUB

We welcome immediate and planned admissions.

Call **01453 541400** • Email **info@thehollies.co.uk**  
**thehollies.co.uk** • Drake Lane, Dursley GL11 5HA



**Hollies**

# Kids Stuff

## Summer Word Search

p	o	o	l	q	r	t	y	u	p
e	d	h	o	l	i	d	a	y	k
x	s	p	k	h	s	s	d	f	p
w	e	u	y	a	v	g	e	c	i
k	a	j	n	g	z	n	y	z	c
x	s	d	p	s	v	j	k	l	n
y	i	g	t	d	h	o	t	z	i
z	d	y	l	v	x	i	w	y	c
b	e	a	c	h	v	n	n	j	x
w	x	d	j	v	w	p	g	e	p

holiday, sunshine, seaside, picnic, hot, sand,  
beach, ice, pool

### Strawberry Ice Pops

130 grams strawberries

100ml Coconut Milk

360 grams Vanilla Yogurt

Blitz the strawberries and mix together with coconut milk and yogurt.

Divide mixture into moulds and freeze.

You can substitute strawberries with other fruit and add granola for a crunch!



### A Summer Quiz

What is the sweet substance made by bees?

Honey

True or false a tomato is a vegetable? False

True or false squirrels use their tails like a parasol in the summer? True

What do elephants use instead of sun cream?

Dust and mud

Where do people gather in England to celebrate the summer solstice?

Stonehenge

### Summer Fun

Go bird watching. Take photos and keep track of your sightings. Use an app or guidebook to identify feathered friends.

Look for shapes in the clouds. Put a blanket in the grass and stare up at the sky. Take turns talking about what you see in the clouds.

Collect rocks and paint them. Turn them into pet rocks, garden ornaments, or gifts for family members

Make a time capsule. Have each family member write down something they are grateful for and include a special item in the time capsule. Then, store it away until a designated date.

## SEVERNSIDE OSTEOPATHIC PRACTICE

*Help for when it hurts*



### Registered Osteopath in Saul

Osteopathy is not only for neck and back pain but for so much more.....

- ❖ Help for aches, pains and stiffness
- ❖ Help for when you are unwell and unsure
- ❖ Sports injuries
- ❖ Women's health - before and after pregnancy
- ❖ Children with growth and postural problems

Off road parking and partial disability access available  
Member of The Allied Health Professions



**Caroline Tosh** DO MSc FSCCO

**T: 01452 740818**

**E: admin@severnsideoesteopathy.uk**

**www.severnsideoesteopathy.uk**

## PIANO LESSONS

Piano lessons locally in Eastington, or online to anywhere in the world.

- . All ages and abilities catered for
- . Take exams or play for fun

I have taught piano and keyboards for several years - in Stroud and Aberdeen - and am now living in Eastington, and teaching both locally and online. Many of my pupils are currently taking exams.



### Contact:

Elizabeth-Anne Ponting

**079 1001 6565**

Elizabeth-anne@aberdeenpiano.co.uk



## ROTARY in the SEVERN VALE

Like so many, Spring has been a busy time for your local Rotary. While maintaining our regular breakfasts, we've combined community activities and social events with the all important time with our friends and families.

Speakers at breakfast included Janet Whitaker, previously a producer and director for BBC. She regaled us with tales of her long career in radio drama, working with some of the acting greats. It seems that many of them were happy to earn a crust in the day whilst performing in the West End in the evening. As always, some were a delight to work with, others perhaps less so.

Our next speaker was one of our members, Rob Toseland, giving a very interesting presentation about The Schneider Trophy. This prize was conceived in 1912 for seaplanes to encourage excellence in aeronautics and to extend the known boundaries of powered flight. Over the 18 years it was held several different European countries and the USA participated. The first race in 1913 yielded a winner with a speed of 50mph. Eleven pilots lost their lives and many more were injured in their attempts to break the record. Rob described a number of accidents that occurred illustrating the perils these daredevils were prepared to face. The final race in 1931 was won by the British Supermarine S6B, at a speed in excess of 340mph. As most know this eventually gave rise to the Spitfire which was to perform such a pivotal role in the war to come.

We welcomed Jenni Hobbs from Barhouse Farm in Elmore. With her husband Jerry, children and grandchildren they run a traditional dairy farm of some 180 cattle of various breeds. A rare occurrence nowadays as so many farmers are having to change to much larger units for economy. In 2018 they saw the need to diversify and set up 'Wholly Gelato', a small enterprise selling artisan ice cream from the farm using their own whole milk and other local ingredients. This has grown exponentially over the years, winning many awards locally and nationally. The majority of their sales are still via the farm shop, but they also supply a number of local restaurants, wedding venues, Coop shops and Gloucester motorway services amongst others. The number and variety of questions illustrated the popularity of the subject, striking a chord with many of the members. At the end Jenni gave out generous samples of two flavours which seemed to go down very well too !

Community activities and fundraising included a litter pick along the Perry Way and the Stroll 4 Sunflowers where over 100 people were involved in the walk and enjoyed a return trip from Saul to Gloucester courtesy of Mike Ellis and one of his vintage buses. As we go to print, we're finalising arrangements for Sunday 28 May and this year's Frampton Open Gardens.

We continued to enjoy our work with schools with Youth Speaks at Wycliffe where we listened to Year 7s presentations for the English Speaking Board and being involved in supporting Young Entrepreneur at Severn Vale.

We have also ensured 'off duty' fun with a much enjoyed Progressive Supper, a Pie Supper The Ship Inn with Steve Knibbs planned as our speaker.

For information on events and breakfast meetings, please visit [www.severnvalerotary.org.uk](http://www.severnvalerotary.org.uk) or contact [keith.rog@hotmail.com](mailto:keith.rog@hotmail.com)



### FRAMPTON VILLAGE SOCIETY TALKS

A warm welcome is extended to everyone to come to our series of illustrated talks held in Frampton on Severn which we hope will be of interest to a variety of people; the talks cover both local topics of interest, more general subjects and sometimes a musical or other theme-based show.

The talks are normally on Friday evenings starting at 7.30pm in our Village Hall and are organised by Frampton on Severn Village Society, which raises funds for various village projects – please refer to the full programme and dates at the end of this article.

You need not be a member of the Society to attend talks and the cost is £4.00 per person, but entrance is cheaper for members and tea/coffee plus biscuits are provided for all!

Should you be interested in becoming a member, please contact Kelvin Broad on 01452 740775 or [kelvinsbroad@btinternet.com](mailto:kelvinsbroad@btinternet.com)

#### April Talk:

Philip Mugridge gave us a talk entitled “A Year in the Life of A Wildlife Photographer”

Philip and his wife Helen are a wildlife photography team based in the Forest of Dean in Gloucestershire. This is a great area for wildlife so they really enjoy capturing images of the local animals and birds they find either out in the Forest or within their own garden. They are lucky to have a wide range of interesting species in the area such as Hawfinches, Mandarin Ducks, Pied Flycatchers and Nightjars. Mammal wise, they enjoy photographing the local deer, mainly Fallow but more recently they have been joined by Muntjac and Roe Deer as well as the Wild Boar which now frequent the Forest, although they are not as easy to find as everyone assumes!

They also travel extensively to various locations around the world. They are particularly fond of Finland and Iceland which they have visited on numerous occasions at various times of the year. Their all-time favourite photographic location is South Georgia, it really is a stunning location full of really great wildlife that can be photographed against the fantastic backdrop of mountain and glaciers.

Although their focus is mainly on birds and mammals they also attempt to photograph all forms of the Natural World. They have also recently started branching out into the field of landscape photography which is a new area they are enjoying.

Philip’s talk fully demonstrated his infectious enthusiasm for nature. Complemented by his own stunning images of birds and animals in Britain today, his travels and stories reflect his passion and commitment to his craft.

Visiting numerous important sites, Philip describes his efforts to capture on film a huge variety of creatures. From a solitary robin in the snow in his garden to thousands of sea birds on a rocky island in the Outer Hebrides, and from a frantic water shrew in his garden pond to the shy pine marten in Scotland, the range and variety was amazing.

Philip travelled to Dumfries to find a group of obliging otters, badgers in the Forest of Dean who could not resist his peanuts and even the local hares agreed to go three rounds for the camera.

His next trip is in search of the spectacular Birds of Paradise. We all look forward to seeing the results.

#### Remaining Talks Programme for 2023

26<sup>th</sup> May: South Sudan before the separation – Brian Barber

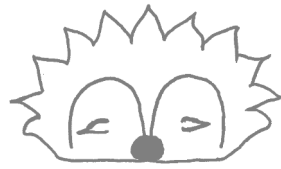
23<sup>rd</sup> June: Sweeps to Slaves: Working Children in the Past – Prof Jenny Tann

August: Visit to be planned

22<sup>nd</sup> September: The Wit and Songs of Noel Coward – Peter Gill

24<sup>th</sup> November: 21<sup>st</sup> Century Frampton Flora, Part 2 – Joy Greenwood

2<sup>nd</sup> December: Christmas Dinner – to be planned



## **WILD HOGS HEDGEHOG RESCUE**

Registered Charity no: 1168800

Hedgehog admissions: 07949 976717    General Enquiries: [wildhogsoffice@gmail.com](mailto:wildhogsoffice@gmail.com)

[www.wildhogshedgehogrescue.org.uk](http://www.wildhogshedgehogrescue.org.uk)

### **Nesting**

Hedgehogs are now starting to nest. Their nests often look like a pile of dry grass, but they can also nest under decking or sheds, and even in BBQ covers. If you do disturb a nest, please cover it back over, go inside the house and call us immediately. Please do not try to care for hoglets yourself, they require specialist care and are very difficult to hand-rear, our experienced team are trained to do this.

Hedgehog mums build the nests and care for the hoglets on their own. They give birth after approximately 32 days gestation and can have between 1 and 9 hoglets, a litter of 3 - 4 is common. Hoglets leave the nest after 2-3 months, growing rapidly and gaining independence quickly. You can help nursing mums by leaving out bowls of fresh water and dry cat food biscuits.

**Please call us for advice if you see a hedgehog out in the day as nesting mums can be active in the day as well as sick or injured hedgehogs. If you are concerned about any hedgehog please always give us a call on 07949 976717.**

